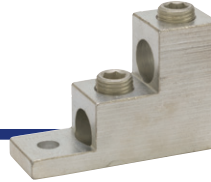


CONNECTORS

Mechanical Connectors

Aluminum, Dual Rated, Stacked Lugs T2 Series

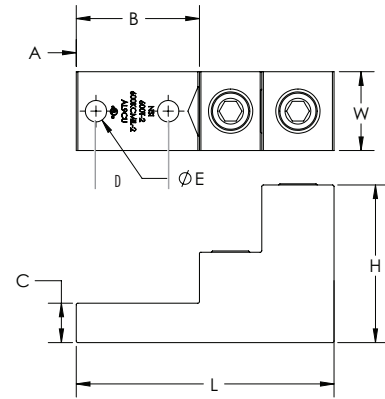
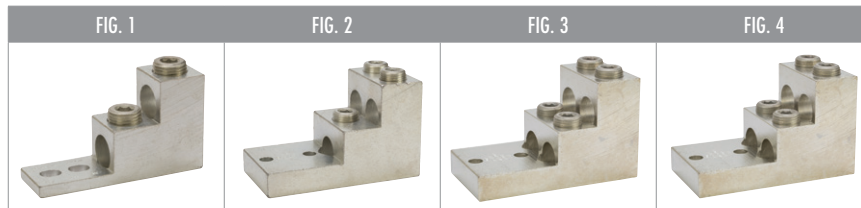


SPECIFICATIONS

- UL Listed for Wire Connector E155027.
- UL486A/B Listed. AL9CU
- Temperature Rating: 90 °C.
- Voltage: 600V max. (2000V ma. per UL486B).

FEATURES

- Large size set-screw connectors with wire holes stacked on top of each other to minimize the width of the connector.
- Made of 6061T-6 aluminum alloy.
- Electro-tin plated for low contact resistance.
- For use with copper or aluminum conductors.



CAT. NO.	FIG. NO.	WIRE RANGE	MTG. BOLT SPACING (D)	MTG. BOLT SIZE	MAX TORQUE VALUE (IN./LBS.)	HEX WRENCH SIZE (IN.)	MTG. HOLE DIA. (E) (IN.)	LENGTH (L) (IN.)	WIDTH (W) (IN.)	HEIGHT (H) (IN.)	END OF CONN. TO CTR. HOLE (A) (IN.)	TANG LENGTH (B) (IN.)	TANG THICKNESS (C) (IN.)	STD. CTN. QTY.
300T-2	1	(2) 300 MCM-6 AWG	—	5/16"	330	5/16	0.330	3.000	1.000	2.000	0.470	1.000	0.310	10
350T-2	2	(2) 350 MCM-6 AWG	0.600	5/16"	400	5/16	0.330	3.560	1.060	2.000	0.470	1.560	0.250	10
600T-2	2	(2) 600 MCM-2 AWG	1.380	3/8	550	3/8	0.410	4.910	1.500	3.000	0.380	2.340	0.750	2
600T-3	3	(3) 600 MCM-2 AWG	1.380	3/8	550	3/8	0.410	4.910	2.500	3.000	0.380	2.340	0.750	2
600T-4	4	(4) 600 MCM-2 AWG	1.380	3/8	550	3/8	0.410	4.910	2.500	3.000	0.380	2.340	0.750	2
800T-2	2	(2) 800-300 MCM	1.380	3/8	550	3/8	0.410	4.910	1.500	3.000	0.380	2.340	0.750	2
800T-3	3	(3) 800-300 MCM	1.380	3/8	550	1/2	0.410	4.910	2.630	3.000	0.380	2.340	0.750	2
800T-4	4	(4) 800-300 MCM	1.380	3/8	550	1/2	0.410	4.910	2.630	3.000	0.380	2.340	0.750	2