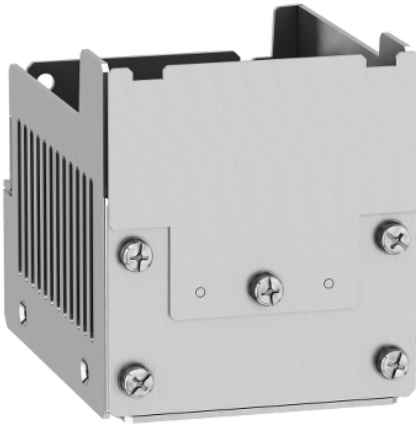


Product data sheet

Characteristics

VW3A95811

kit for UL type 1 conformity, Altivar machine
ATV320, mounted under variable speed drive
ATV320 S1C



Main

Range of Product	Altivar
Accessory / separate part category	Mounting and fixing accessories
Accessory / separate part type	Kit for UL type 1 conformity
Product compatibility	Variable speed drive ATV320...C 0.18 kW, 200...240 V, single phase[RETURN]Variable speed drive ATV320...C 0.37 kW, 200...240 V, single phase[RETURN]Variable speed drive ATV320...C 0.55 kW, 200...240 V, single phase[RETURN]Variable speed drive ATV320...C 0.75 kW, 200...240 V, single phase
Accessory / separate part destination	Variable speed drive

Complementary

Range Compatibility	Altivar Machine ATV320
Kit composition	Mechanical device
Mounting Location	Underside of drive

Environment

Standards	UL Type 1
-----------	-----------

Ordering and shipping details

Category	22154-ATV320/ATV312/ATV32 ACCESSORIES
Discount Schedule	CP4B
GTIN	3606480967153
Returnability	Yes
Country of origin	ID

Packing Units

Unit Type of Package 1	PCE
Number of Units in Package 1	1
Package 1 Height	4.33 in (11 cm)
Package 1 Width	7.24 in (18.4 cm)
Package 1 Length	7.24 in (18.4 cm)
Package 1 Weight	23.28 oz (660 g)

Offer Sustainability

California proposition 65	WARNING: This product can expose you to chemicals including: Lead and lead compounds, which is known to the State of California to cause cancer and birth defects or other reproductive harm. For more information go to www.P65Warnings.ca.gov
RECh Regulation	RECh Declaration
RECh free of SVHC	Yes
EU RoHS Directive	Pro-active compliance (Product out of EU RoHS legal scope)
Mercury free	Yes

China RoHS Regulation

 [China RoHS Declaration](#)

RoHS exemption information

 [Yes](#)
