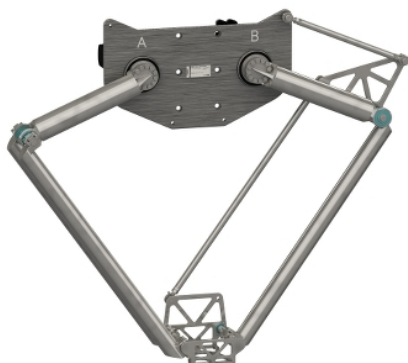


# Product data sheet

## Characteristics

# VRKT3M0FNC00000

Delta 2 robot, T3, 2-3 axis, 35 kg permissible load, 0-1000 mm working envelop



### Main

Range of Product	Lexium P, T
Product or Component Type	Delta 2 robot
Device short name	T3
Design	Compact

### Complementary

Number of axis	2
Work envelope	59.06 In (1500 mm) diameter 0.00...39.37 In (0...1000 mm) horizontal 0.00...21.85 in (0...555 mm) vertical
Repeat accuracy	0.1 mm
Permanent permissible load	77.16 lb(US) (35 kg)
Maximum actuation speed	19.69 ft/s (6 m/s)
Maximum acceleration	203.41 Ft/S <sup>2</sup> (62 m/s <sup>2</sup> ) at 1 kg 134.51 ft/s <sup>2</sup> (41 m/s <sup>2</sup> ) at 10 kg
Net Weight	132.28 lb(US) (60 kg)
Range Compatibility	Lexium MH3 motor

### Environment

Environmental characteristic	Normal environment
------------------------------	--------------------

### Ordering and shipping details

Category	18357-PACDRIVE ROBOTIC
Discount Schedule	PC52
GTIN	3606485459196
Returnability	No

### Packing Units

Unit Type of Package 1	PCE
Number of Units in Package 1	1
Package 1 Height	36.22 in (92.0 cm)
Package 1 Width	47.44 in (120.5 cm)
Package 1 Length	47.44 in (120.5 cm)
Package 1 Weight	194.01 lb(US) (88.0 kg)