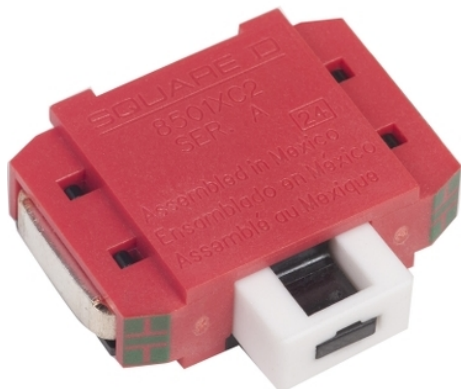


8501XC2

NEMA Control Relay, Type X, overlapping contact cartridge, 10A resistive at 600 VAC, 1 NO or 1 NC contact



Main

Range of Product	8501X
Relay Type	Control relay
Product or Component Type	Overlapping contact cartridge

Complementary

Rated breaking capacity	6 A 120 V AC inductive control circuit UL 508 3 A 240 V AC inductive control circuit UL 508 1.5 A 480 V AC inductive control circuit UL 508 1.2 A 600 V AC inductive control circuit UL 508 10 A ≤ 600 V AC resistive control circuit UL 508 1.1 A 125 V DC inductive control circuit UL 508 4 A 125 V DC resistive control circuit UL 508
[Icm] rated short-circuit making capacity	60 A 120 V AC inductive control circuit UL 508 30 A 240 V AC inductive control circuit UL 508 15 A 480 V AC inductive control circuit UL 508 12 A 600 V AC inductive control circuit UL 508 10 A ≤ 600 V AC resistive control circuit UL 508 1.1 A 125 V DC inductive control circuit UL 508 4 A 125 V DC inductive control circuit UL 508
Contacts Configuration	1 NO 1 overlapping contact cartridge

Environment

Product Certifications	UL recognized E78403 CCN NKCR2[RETURN]CE[RETURN]CSA LR60905 class 3211 02
------------------------	---

Ordering and shipping details

Category	21159-8501 X ACCESSORIES
Discount Schedule	CP2
GTIN	785901537106
Returnability	No
Country of origin	MX

Packing Units

Unit Type of Package 1	PCE
Number of Units in Package 1	1

The information provided in this documentation contains general descriptions and/or technical characteristics of the performance of the products contained herein. This documentation is not intended as a substitute for and is not to be used for determining suitability or reliability of these products for specific user applications. It is the duty of any such user or integrator to perform the appropriate and complete risk analysis, evaluation and testing of the products with respect to the relevant specific application or use thereof. Neither Schneider Electric Industries SAS nor any of its affiliates or subsidiaries shall be responsible or liable for misuse of the information contained herein.

Offer Sustainability

California proposition 65	WARNING: This product can expose you to chemicals including: Lead and lead compounds, which is known to the State of California to cause cancer and birth defects or other reproductive harm. For more information go to www.P65Warnings.ca.gov
EU RoHS Directive	Pro-active compliance (Product out of EU RoHS legal scope)
Mercury free	Yes
China RoHS Regulation	China RoHS Declaration
RoHS exemption information	Yes
Environmental Disclosure	Product Environmental Profile

Contractual warranty

Warranty	18 months
----------	-----------