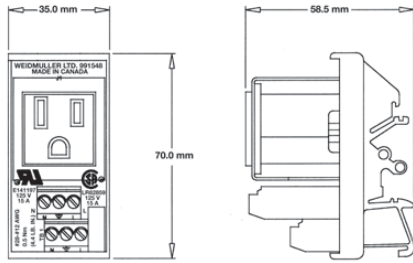
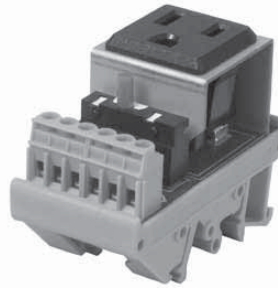


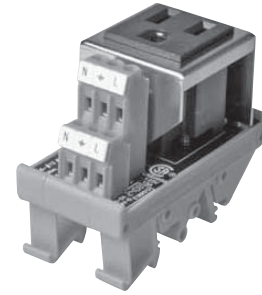
Dimensional Drawing



5 Amp Simplex w/Circuit Breaker



15 Amp Simplex w/o Circuit Breaker



Technical data

Voltage
Current
Wire Size (AWG)
Stripping Length mm/in.
Terminal Torque
Mounting
Width
Length
Height

120 VAC
5A max.
26 - 12 AWG (0.14 - 4.0mm ²)
6mm
0.5-0.6 Nm
TS32 or TS35 DIN-Rail
35mm/1.38 in.
70mm/2.76 in.
58.5mm/2.30 in.

120 VAC
15A max.
26 - 12 AWG (0.14 - 4.0mm ²)
6mm
0.5-0.6 Nm
TS32 or TS35 DIN-Rail
35mm/1.38 in.
70mm/2.76 in.
58.5mm/2.30 in.

Approvals/Certifications

--

Description

LR-229352, E252394

Description

LR-229352, E252394

Ordering data

--

Type	Part No.
Single outlet with circuit breaker (supplemental protector with manual reset via push button)	9915480001

Type	Part No.
Single outlet without circuit breaker	9915480000

