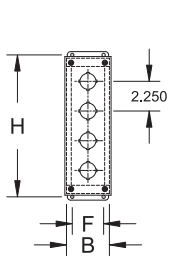


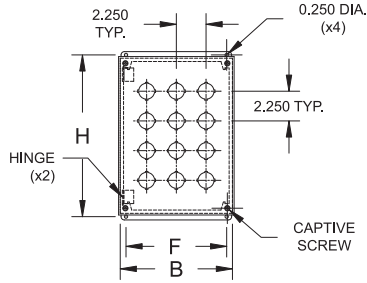


# PB Series

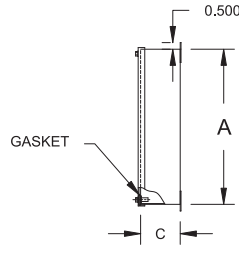
# EEMAC / NEMA 12 Pushbutton Enclosures



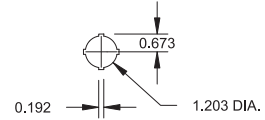
1PB TO 4PB



4SPB & UP

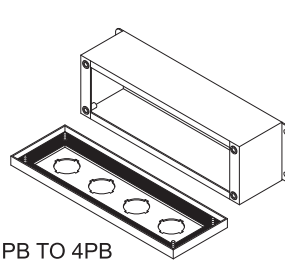


Side View

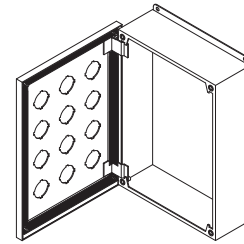


### TECHNICAL READOUT

Catalog No.	with holes	without holes	Dimensions				Weight lbs.	
			A	B	C	H		F
1PB	1PBC		3.50	3.25	2.75	4.00	2.375	1.75
2PB	2PBC		5.75	3.25	2.75	6.25	2.375	2.25
3PB	3PBC		8.00	3.25	2.75	8.50	2.375	3.00
4PB	4PBC		10.25	3.25	2.75	10.75	2.375	3.50
4SPB	4SPBC		7.25	6.25	3.00	7.75	5.375	4.50
6PB	6PBC		9.50	6.25	3.00	10.00	5.375	5.25
9PB	9PBC		9.50	8.50	3.00	10.00	7.625	6.50
12PB	12PBC		11.75	8.50	3.00	12.25	7.625	7.50
16PB	16PBC		11.75	10.75	3.00	12.25	9.875	9.00
20PB	20PBC		14.00	10.75	3.00	14.50	9.875	10.50
25PB	25PBC		14.00	13.00	3.00	14.50	12.125	12.00
30PB	30PBC		16.25	13.00	3.00	16.75	12.125	14.00
36PB	36PBC		16.25	15.25	3.00	16.75	14.375	16.00
42PB	42PBC		18.50	15.25	3.00	19.00	14.375	18.00



1PB TO 4PB



4SPB & UP

### Application:

Type 12 enclosure designed to accept pushbuttons, switches and pilot lights.

### Construction:

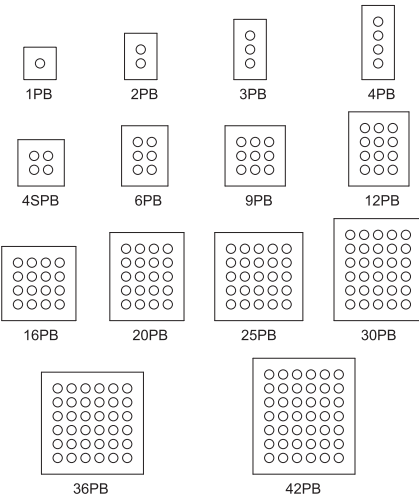
- 16 gauge steel
- Continuously welded and ground smooth seams
- Cover secured by captive nickel plated screws threaded into sealed wells
- ANSI/ASA61 grey polyester - epoxy textured powder coating inside out

### Also Available:

- Blank cover (add "C" as in 1PBC)
- 4 3/4 extra deep box (add "X" as in 1PBX)
- Hinged cover and/or sloping front
- Aluminium, SS, galvanized steel & special finishes

### Standards:

- CSA certified 150359
- UL listed E109310



PB CONFIGURATION SAMPLES

