

# Keywerks™ 1U/48-Port High-Density Rack Mount Patch Panel

**Description**

Keywerks™ 1U/48-port high-density rack mount patch panel is designed to reduce the rack space occupied by a typical 2U/48-port by half while still offering a 48-port capacity. It makes possible to use only one patch panel per 48-port switch. It is the ideal solution for very high-density environment such as ISP (internet service providers), data centers, central offices, and other applications where rack space is at a premium. It is designed to accept all Keywerks Jacks, Keywerks fiber optic adapters, and Keywerks audio/video connectors or any other product with standard Keystone footprint. The rear cable management bracket is included and helps to support cable bundles. The Keywerks 1U/48-port high-density rack mount patch panel is compatible with standard 19 in. racks and cabinets.

**Features and Benefits**

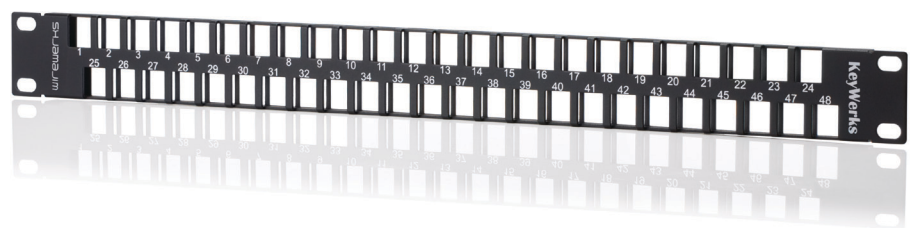
- 48 ports per 1U rack space
- Staggered port positions for an easy jacks installation and manipulation
- Accepts all Keywerks modules or any other product with standard Keystone footprint
- Rear cable management bracket included
- Port numbering in front
- Installation hardware and instruction manual included
- Compatible with 19 inches racks and cabinets

**Applications**

- Data centers
- Telecommunications rooms
- Cellular tower base stations
- Internet service providers
- Central offices
- Multi-system operators

**Certification and Compliance**

- TIA-569
- CEA/EIA-310
- ANSI/TIA-568-C.2
- ANSI/TIA/EIA-606
- FCC part 68
- UL 94
- RoHS
- Commercial Building Standard for Telecommunications Pathways and Spaces. Cabinets, Racks, Panels and Associated Equipment standard.
- Balanced Twisted-Pair Telecommunications Cabling and Component Standards.
- Administration Standard for Telecommunications Infrastructure.
- Connection of the Terminal Equipment to the Telephone Network.
- Tests for Flammability of Plastic Material for Parts in Devices and Appliances.
- Directive on Restriction of Hazardous Substances.



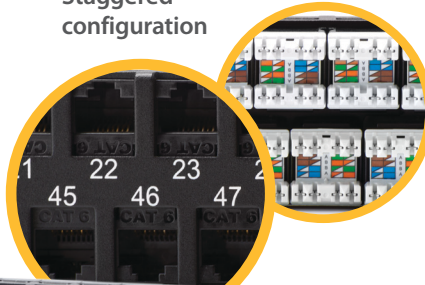
# Keywerks™ 1U/48-Port High-Density Rack Mount Patch Panel

wirewerks

Alternate cable orientation for easy reach



Staggered configuration



Sturdy steel frame



WW001452 shown

High density management bar



WW001450 shown

## Physical Characteristics

## Mechanical Characteristics

Part Number	Description
WW001450	Empty Keywerks 1U/48-port high-density rack mount patch panel, black. <b>Jacks sold separately.</b>
WW001452	CAT6 Keywerks 1U/48-port high-density rack mount patch panel, black.
WW001451	CAT5e Keywerks 1U/48-port high-density rack mount patch panel, black.

Parameter	Value	What is included
Port capacity	48 ports	Cardboard box packaging, 1 unit per box. 1 X patch panel chassis 1 X cable management bracket kit 24 X nylon tie wraps 4 X Philips screws 10-32 4 X Philips screws 12-24 Port ID labels Instruction manual
Plastic materials	UL 94V-0 ABS thermoplastic	
Panel material	Cold rolled steel (CRS) 0.060 in, ASTM 1008	
Overall dimensions	482.59 mm (19 in) x 44.45 mm (1.75 in)	
Parameter	Value	
Installation temperature	-20° C (-4° F) ~ 40° C (104° F)	
Storage temperature	-40° C (-40° F) ~ 125° C (257° F)	