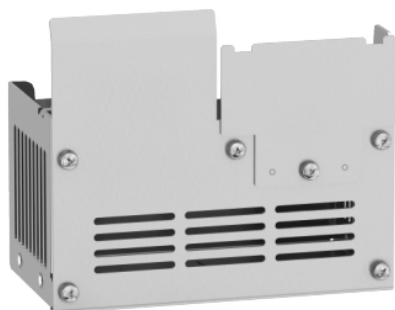


Product data sheet

Characteristics

VW3A95814

kit for UL type 1 conformity, Altivar machine
ATV320, mounted under variable speed drive
ATV320 S3C



Main

| | |
|---------------------------------------|--|
| Range of Product | Altivar |
| Accessory / separate part category | Mounting and fixing accessories |
| Accessory / separate part type | Kit for UL type 1 conformity |
| Product compatibility | Variable speed drive ATV320...C 2.2 kW, 380...500 V, three phase Variable speed drive ATV320...C 3 kW, 380...500 V, three phase Variable speed drive ATV320...C 4 kW, 380...500 V, three phase Variable speed drive ATV320...C 2.2 kW, 525...600 V, three phase Variable speed drive ATV320...C 4 kW, 525...600 V, three phase |
| Accessory / separate part destination | Variable speed drive |

Complementary

| | |
|---------------------|------------------------|
| Range Compatibility | Altivar Machine ATV320 |
| Kit composition | Mechanical device |
| Mounting Location | Underside of drive |

Environment

| | |
|-----------|-----------|
| Standards | UL Type 1 |
|-----------|-----------|

Ordering and shipping details

| | |
|-------------------|---------------------------------------|
| Category | 22154-ATV320/ATV312/ATV32 ACCESSORIES |
| Discount Schedule | CP4B |
| GTIN | 3606480967184 |
| Returnability | Yes |
| Country of origin | ID |

Packing Units

| | |
|------------------------------|--------------------------|
| Unit Type of Package 1 | PCE |
| Number of Units in Package 1 | 1 |
| Package 1 Height | 7.09 in (18.000 cm) |
| Package 1 Width | 7.28 in (18.500 cm) |
| Package 1 Length | 7.28 in (18.500 cm) |
| Package 1 Weight | 31.25 oz (886.000 g) |
| Unit Type of Package 2 | P06 |
| Number of Units in Package 2 | 30 |
| Package 2 Height | 29.53 in (75.000 cm) |
| Package 2 Width | 23.62 in (60.000 cm) |
| Package 2 Length | 31.50 in (80.000 cm) |
| Package 2 Weight | 84.88 lb(US) (38.500 kg) |

Offer Sustainability

| | |
|----------------------------|---|
| California proposition 65 | WARNING: This product can expose you to chemicals including: Lead and lead compounds, which is known to the State of California to cause cancer and birth defects or other reproductive harm. For more information go to www.P65Warnings.ca.gov |
| REACH Regulation | REACH Declaration |
| REACH free of SVHC | Yes |
| EU RoHS Directive | Pro-active compliance (Product out of EU RoHS legal scope) |
| Mercury free | Yes |
| China RoHS Regulation | China RoHS Declaration |
| RoHS exemption information | Yes |