



### Main

Range of Product	Altivar
Product or Component Type	EMC input filter
Range Compatibility	Lexium 05 Altivar 312 Solar Altivar 312 Altivar Machine ATV320
Product compatibility	ATV312H018M3 ATV312H037M3 ATV312H055M3 ATV312H075M3 LXM05AD10M3X LXM05BD10M3X Variable speed drive ATV320...C0.18 kW, 200...240 V three phase Variable speed drive ATV320...C0.37 kW, 200...240 V three phase Variable speed drive ATV320...C0.55 kW, 200...240 V three phase Variable speed drive ATV320...C0.75 kW, 200...240 V three phase
Product Specific Application	Radio interference input filter
Line Rated Current	7 A
Thermal losses	2.6 W ATV31H018M3X
Phase	Three phase

### Complementary

Maximum earth leakage current	7 mA 50 Hz
Power supply voltage	200...240 V
Tolerance	10 %
Net Weight	1.43 Lb(US) (0.65 kg) 1.21 lb(US) (0.55 kg)

### Environment

IP degree of protection	IP20 IP41 upper part)
Relative humidity	0...93 % IEC 68-2-3
Ambient air temperature for operation	14...122 °F (-10...50 °C)
Ambient Air Temperature for Storage	-13...158 °F (-25...70 °C)
Operating altitude	<= 3280.84 ft (1000 m) without current derating 3280.84...9842.52 ft (1000...3000 m) with current derating 1 % per 100 m
Vibration resistance	1 gn 13...150 Hz)IEC 60068-2-6 1.5 mm peak to peak 3...13 Hz)IEC 60068-2-6
Shock resistance	15 gn 11 ms IEC 60068-2-27
Standards	IEC 61800-3

### Ordering and shipping details

Category	22154-ATV320/ATV312/ATV32 ACCESSORIES
Discount Schedule	CP4B
GTIN	3389110689020
Returnability	No
Country of origin	TH

## Packing Units

Unit Type of Package 1	PCE
Number of Units in Package 1	1
Package 1 Height	1.97 in (5 cm)
Package 1 Width	7.32 in (18.6 cm)
Package 1 Length	9.53 in (24.2 cm)
Package 1 Weight	19.12 oz (542 g)
Unit Type of Package 2	S03
Number of Units in Package 2	7
Package 2 Height	11.81 in (30 cm)
Package 2 Width	11.81 in (30 cm)
Package 2 Length	15.75 in (40 cm)
Package 2 Weight	9.54 lb(US) (4.328 kg)

## Offer Sustainability

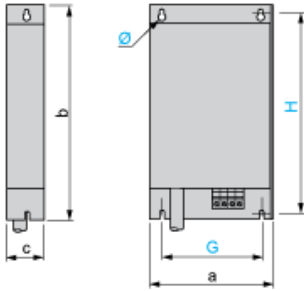
California proposition 65	WARNING: This product can expose you to chemicals including: Lead and lead compounds, which is known to the State of California to cause cancer and birth defects or other reproductive harm. For more information go to <a href="http://www.P65Warnings.ca.gov">www.P65Warnings.ca.gov</a>
REACH Regulation	<a href="#">REACH Declaration</a>
REACH free of SVHC	Yes
EU RoHS Directive	Pro-active compliance (Product out of EU RoHS legal scope) <a href="#">EU RoHS Declaration</a>
Toxic heavy metal free	Yes
Mercury free	Yes
China RoHS Regulation	<a href="#">China RoHS Declaration</a>
RoHS exemption information	<a href="#">Yes</a>

## Contractual warranty

Warranty	18 months
----------	-----------

Additional EMC Input Filters

Dimensions



Dimensions in mm

a	b	c	G	H	Ø
72	195	37	52	180	4.5

Dimensions in in.

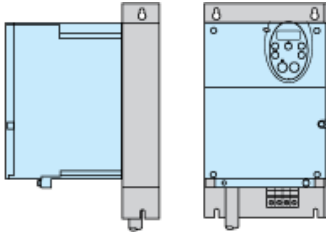
a	b	c	G	H	Ø
2.83	7.68	1.46	2.05	7.09	0.18

---

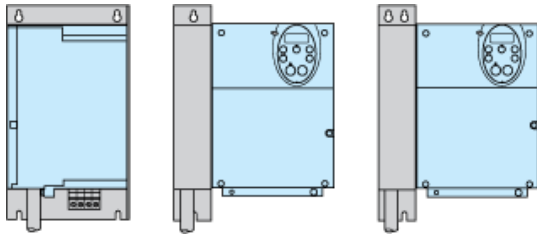
Additional EMC Input Filter

---

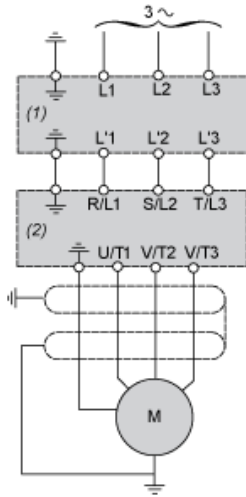
Mounting the Filter under the Drive



Mounting the Filter next to the Drive



Recommended Schema



- (1) Filter
- (2) Drive