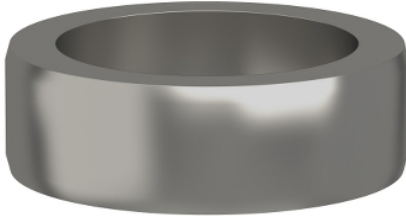


# Product data sheet

## Characteristics

# VW33MF020LD03

locating dowels, Lexium PAS, 3,8xd12/d9, 20 pieces



### Main

Range of product	Lexium linear motion
Product or component type	Adaptor
Accessory / separate part category	Maintenance accessories

### Complementary

Product compatibility	PAS 44 linear axis 110 x 110 mm CAS 44 linear axis 110 x 110 mm CAS 34 cantilever axis 160 x 50 mm
Range compatibility	Lexium CAS Lexium PAS

### Ordering and shipping details

Category	18233-LINEAR MOTION ACCESSORIES
Discount Schedule	PC57
GTIN	3606485220000
Returnability	No
Country of origin	DE

### Packing Units

Unit Type of Package 1	PCE
Number of Units in Package 1	1
Package 1 Height	2.36 in (6.0 cm)
Package 1 Width	4.72 in (12.0 cm)
Package 1 Length	6.30 in (16.0 cm)
Package 1 Weight	4.51 oz (128.0 g)

### Offer Sustainability

California proposition 65	WARNING: This product can expose you to chemicals including: Lead and lead compounds, which is known to the State of California to cause cancer and birth defects or other reproductive harm. For more information go to <a href="http://www.P65Warnings.ca.gov">www.P65Warnings.ca.gov</a>
REACH Regulation	<a href="#">REACH Declaration</a>
REACH free of SVHC	Yes
EU RoHS Directive	Pro-active compliance (Product out of EU RoHS legal scope) <a href="#">EU RoHS Declaration</a>
Toxic heavy metal free	Yes
Mercury free	Yes
China RoHS Regulation	<a href="#">China RoHS Declaration</a>
RoHS exemption information	<a href="#">Yes</a>
PVC free	Yes

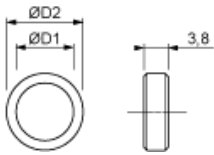
## Contractual warranty

---

Warranty	18 months
----------	-----------

---

Dimensions



Dimensions in mm

ØD1	ØD2
9	12 h6

Dimensions in in.

ØD1	ØD2
0.35	0.47 h6