

RCIKIT 24VDC 1CO LD/PB

Weidmüller Interface GmbH & Co. KG

Klingenbergstraße 26

D-32758 Detmold

Germany

www.weidmueller.com



- Mounted kit consisting relay, socket and retaining clip
- 100 % function tested
- 100 % check of the dielectric strenght between input - output
- 1 CO contacts
- Optional test button with mechanical status indicator
- Bright status LED (AC coil: red / DC coil: green)
- identification of coils (AC red / DC blue)

General ordering data

| | |
|---------------------|---|
| Version | RIDERSERIES RCI, Relay module, Number of contacts: 1, CO contact AgNi, Rated control voltage: 24 V DC, Continuous current: 16 A, Screw connection, Test button available: Yes |
| Order No. | 8881580000 |
| Type | RCIKIT 24VDC 1CO LD/PB |
| GTIN (EAN) | 4032248631834 |
| Qty. | 10 pc(s). |
| Delivery status | This article will no longer be available in the future. |
| Available until | 2024-10-31 |
| Relevant relay | 8870250000 |
| Alternative product | 2476750000 |
| Relevant base | 8869490000 |

Creation date November 26, 2024 11:57:11 AM CET

RCIKIT 24VDC 1CO LD/PB

Weidmüller Interface GmbH & Co. KG

Klingenbergstraße 26

D-32758 Detmold

Germany

www.weidmueller.com

Technical data

Dimensions and weights

| | | | |
|------------|---------|-----------------|------------|
| Depth | 70.2 mm | Depth (inches) | 2.764 inch |
| Height | 77 mm | Height (inches) | 3.031 inch |
| Width | 15.8 mm | Width (inches) | 0.622 inch |
| Net weight | 56.2 g | | |

Temperatures

| | | | |
|---------------------|--|-----------------------|----------------|
| Storage temperature | -40 °C...70 °C | Operating temperature | -40 °C...70 °C |
| Humidity | 40 °C / 93 % rel. humidity, no condensation | | |

Control side

| | | | |
|-----------------------|-----------|--------------------|---------------------|
| Rated control voltage | 24 V DC | Rated current DC | 31.6 mA |
| Power rating | 761 mW | Coil resistance | 1440 Ω ± 10 % |
| Status indicator | Green LED | Protective circuit | Free-wheeling diode |

Load side

| | | | |
|---|---|---|---|
| Rated switching voltage | 250 V AC | Continuous current | 12 A @ 1CO without bridged output wire con- nections; 16 A @ 1CO with bridged output wire con- nections |
| Max. switching frequency at rated load | 0.1 Hz | Max. switching voltage, AC | 250 V |
| Inrush current | 30 A / 4 s | AC switching capacity (resistive), max. | 4000 VA |
| DC switching capacity (resistive), max. | 384 W @ 24 V | Switch-on delay | ≤ 8 ms |
| Switch-off delay | ≤ 6 ms | Contact type | 1 CO contact (AgNi) |
| Mechanical service life | AC coil 5 x 10 ⁶ switching cycles, DC coil 10 x 10 ⁶ switching cycles | Min. switching power | 1 mA @ 24 V, 10 mA @ 12 V, 100 mA @ 5 V |

General data

| | | | |
|------------------------|---|--------------------------------------|-----|
| Rail | TS 35 | Test button available | Yes |
| Version of test button | lockable, just when remov- ing the detend lock, Mo- mentary test button | Mechanical switch position indicator | Yes |
| Colour | black | | |

Insulation coordination

| | | | |
|--|-----------------------------|---|-----------------------------|
| Rated voltage | 250 V | Pollution severity | 2 |
| Surge voltage category | III | Insulating material group | IIIa |
| Clearance and creepage distances for control side - load side | ≥ 8 mm | Dielectric strength for control side - load side | 5 kV _{eff} / 1 min |
| Dielectric strength of open contact | 1 kV _{eff} / 1 min | Impulse withstand voltage | 5 kV (1.2/50 μs) |
| Protection degree | IP20 | | |

Further details of approvals / standards

| | | | |
|------------------------------|----------------|-------------------------------|----------------|
| Certificate no. (CSA) relay | 249409-2426937 | Certificate no. (CSA) base | 249409-2295474 |
| Certificate No. (DNV) | TAA000011A | Certificate no. (cURus) relay | E522350 |
| Certificate no. (cURus) base | E223759 | | |

RCIKIT 24VDC 1CO LD/PB

Weidmüller Interface GmbH & Co. KG

Klingenbergstraße 26

D-32758 Detmold

Germany

www.weidmueller.com

Technical data

Connection data

| | | | |
|---|---------------------|---|-------------------|
| Wire connection method | Screw connection | Stripping length, rated connection | 8 mm |
| Tightening torque, min. | 0.5 Nm | Tightening torque, max. | 0.7 Nm |
| Clamping range, rated connection | 2.5 mm ² | Clamping range, min. | 1 mm ² |
| Clamping range, max. | 2.5 mm ² | Wire cross-section, solid, min. | 1 mm ² |
| Wire cross-section, solid, max. | 2.5 mm ² | Wire connection cross section, finely stranded, min. | 1 mm ² |
| Wire connection cross section, finely stranded, max. | 2.5 mm ² | Wire connection cross-section, finely stranded with wire-end ferrules DIN 46228/4, min. | 1 mm ² |
| Wire connection cross-section, finely stranded with wire-end ferrules DIN 46228/4, max. | 2.5 mm ² | Conductor cross-section, flexible, AEH (DIN 46228-1), min. | 1 mm ² |
| Conductor cross-section, flexible, AEH (DIN 46228-1), max. | 2.5 mm ² | Wire connection cross section, finely stranded, two clampable wires, min. | 1 mm ² |
| Wire cross-section, finely stranded, two clampable wires, max. | 1.5 mm ² | Blade size | size PZ1 |

Classifications

| | | | |
|-------------|-------------|-------------|-------------|
| ETIM 6.0 | EC001437 | ETIM 7.0 | EC001437 |
| ETIM 8.0 | EC001437 | ETIM 9.0 | EC001437 |
| ECLASS 9.0 | 27-37-16-01 | ECLASS 9.1 | 27-37-16-01 |
| ECLASS 10.0 | 27-37-16-01 | ECLASS 11.0 | 27-37-16-01 |
| ECLASS 12.0 | 27-37-16-01 | ECLASS 13.0 | 27-37-16-01 |
| ECLASS 14.0 | 27-37-16-01 | | |

Environmental Product Compliance

| | |
|------------------------|-----------------------------|
| RoHS Compliance Status | Compliant without exemption |
| REACH SVHC | No SVHC above 0.1 wt% |

Important note

| | |
|---------------------|---|
| Product information | IP20 without connected conductor at complete opened clamping yoke connection. |
|---------------------|---|

Approvals

Approvals



| | |
|------|---------|
| ROHS | Conform |
|------|---------|

Downloads

| | |
|---|--|
| Approval/Certificate/Document of Conformity | EU Konformitätserklärung / EU Declaration of Conformity |
| Engineering Data | CAD data – STEP |
| Product Change Notification | 20220511 Product consolidation RIDERSERIES RCI KITS 20220511 Produktkonsolidierung RIDERSERIES RCI KITS |
| Catalogues | Catalogues in PDF-format |
| Brochures | |

Creation date November 26, 2024 11:57:11 AM CET

Catalogue status 26.11.2024 / We reserve the right to make technical changes.

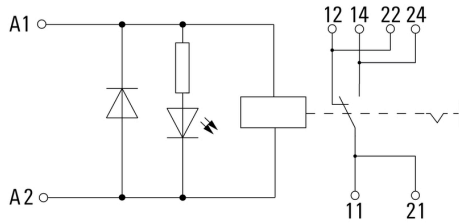
RCIKIT 24VDC 1CO LD/PB

Weidmüller Interface GmbH & Co. KG
 Klingenbergstraße 26
 D-32758 Detmold
 Germany

www.weidmueller.com

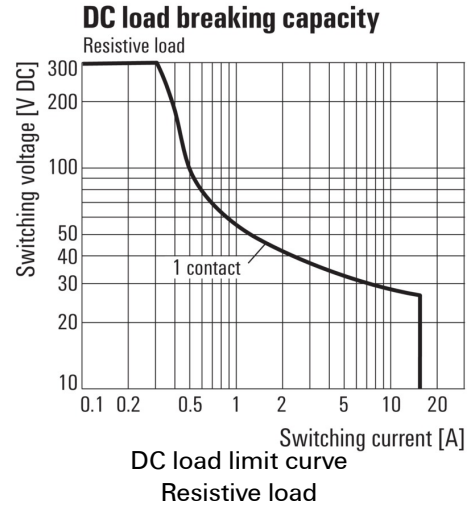
Drawings

Wiring diagram

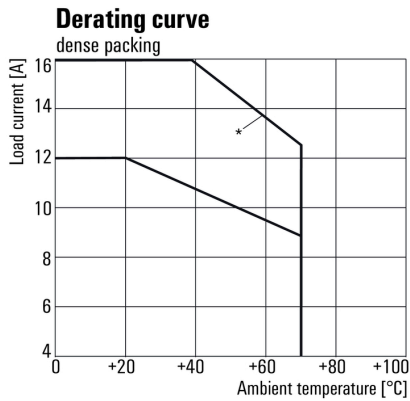


For full continuous current (16 A), the wire terminals 11 with 21, 12 with 22 and 14 with 24 must be bridged with a wire $\geq 1,5 \text{ mm}^2$ at the socket.

Graph



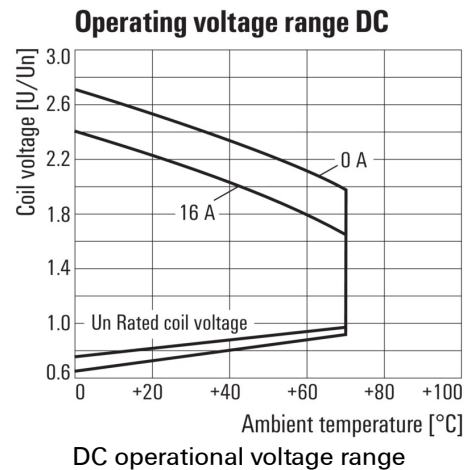
Graph



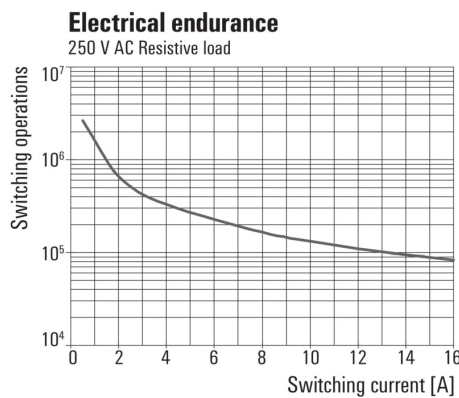
*For full continuous current (16 A), the wire terminals 11 with 21, 12 with 22 and 14 with 24 must be bridged with a wire $\geq 1,5 \text{ mm}^2$ at the socket.

Derating curve
Relay in combination with base

Graph

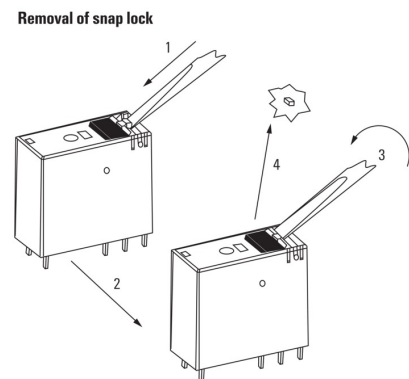


Graph



Electrical service life 250 V AC resistive load
250 V AC resistive load

Dimensional drawing



Detailed drawing
Removal of the test button detent lock

Data sheet

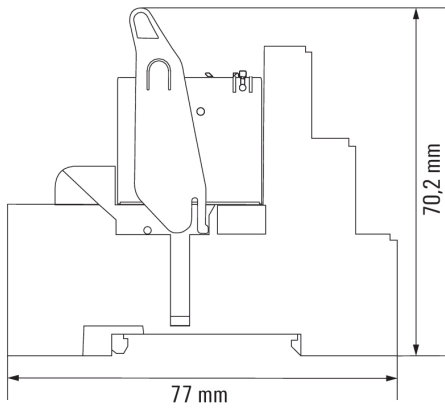
RCIKIT 24VDC 1CO LD/PB

Weidmüller Interface GmbH & Co. KG
Klingenbergstraße 26
D-32758 Detmold
Germany

www.weidmueller.com

Drawings

Dimensional drawing



RCIKIT 24VDC 1CO LD/PB

Weidmüller Interface GmbH & Co. KG
 Klingenbergstraße 26
 D-32758 Detmold
 Germany
 www.weidmueller.com

