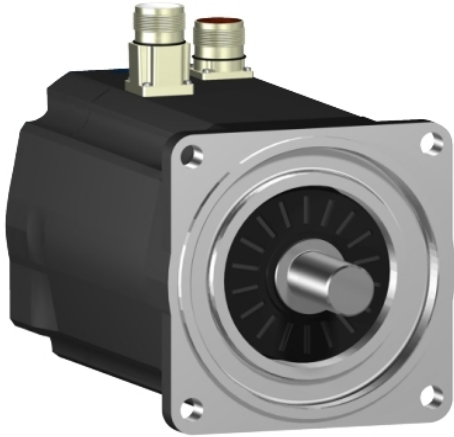


# SH31402P12A1200

servo motor SH3 140

19,5Nm,key,single,brake,90°conn.IP65/IP67,4k RPM



## Main

Range Compatibility	PacDrive 3
Product or Component Type	Servo motor
Device short name	SH3.....P

## Complementary

Maximum mechanical speed	4000 rpm
[Us] rated supply voltage	115...480 V
Phase	Three phase
Continuous stall current	13.2 A
Continuous stall torque	172.59 lbf.in (19.5 N.m) 115...480 V three phase
Continuous power	3900 W
Peak stall torque	531.93 lbf.in (60.1 N.m) 115...480 V three phase
Nominal output power	1460 W 115 V single phase 2690 W 230 V single phase 3860 W 400 V three phase 3660 W 480 V three phase
Nominal torque	164.62 Lbf.In (18.6 N.m) 115 V single phase 151.35 Lbf.In (17.1 N.m) 230 V single phase 108.86 Lbf.In (12.3 N.m) 400 V three phase 85.85 lbf.in (9.7 N.m) 480 V three phase
Nominal speed	750 rpm 115 V single phase 1500 rpm 230 V single phase 3000 rpm 400 V three phase 3600 rpm 480 V three phase
Maximum current Irms	44.1 A
Shaft end	Parallel key
Shaft diameter	0.94 in (24 mm)
Shaft length	1.97 in (50 mm)
Key width	0.31 in (8 mm)
IP degree of protection	Motor IP65 EN/IEC 60034-5 Shaft bushing IP65 EN/IEC 60034-5 Housing IP67 EN/IEC 60034-5
Encoder type	Absolute multiturn SinCos Hiperface
Speed feedback resolution	128 periods
Holding brake	Without
Mounting Support	International standard flange
Motor flange size	5.51 in (140 mm)
Electrical Connection	Straight connector
Torque constant	1.47 N.m/A 248 °F (120 °C)
Back emf constant	101 V/krpm 68 °F (20 °C)
Number of motor poles	5

Rotor inertia	12.68 kg.cm <sup>2</sup>
Stator resistance	0.6 Ohm
Stator inductance	11.225 mH
Maximum radial force Fr	2240 N 1000 rpm 1780 N 2000 rpm 1550 N 3000 rpm
Maximum axial force Fa	300 N
Type of cooling	Natural convection
Length	10.73 in (272.5 mm)
Centring collar diameter	5.12 in (130 mm)
Centring collar depth	0.14 in (3.5 mm)
Number of mounting holes	4
Mounting holes diameter	0.43 in (11 mm)
Circle diameter of the mounting holes	6.50 in (165 mm)
Net Weight	36.60 lb(US) (16.6 kg)

### Ordering and shipping details

Category	18359-PACDRIVE3 SERVO MOTORS
Discount Schedule	PC52
Returnability	No

### Packing Units

Unit Type of Package 1	PCE
Number of Units in Package 1	1
Package 1 Weight	36.52 lb(US) (16.565 kg)

### Offer Sustainability

Sustainable offer status	Green Premium product
California proposition 65	WARNING: This product can expose you to chemicals including: Lead and lead compounds, which is known to the State of California to cause cancer and birth defects or other reproductive harm. For more information go to <a href="http://www.P65Warnings.ca.gov">www.P65Warnings.ca.gov</a>
REACH Regulation	<a href="#">REACH Declaration</a>
EU RoHS Directive	Pro-active compliance (Product out of EU RoHS legal scope)
Mercury free	Yes
China RoHS Regulation	<a href="#">China RoHS Declaration</a>
RoHS exemption information	<a href="#">Yes</a>
Environmental Disclosure	<a href="#">Product Environmental Profile</a>
Circularity Profile	No need of specific recycling operations
WEEE	The product must be disposed on European Union markets following specific waste collection and never end up in rubbish bins.
PVC free	Yes

### Contractual warranty

Warranty	18 months
----------	-----------