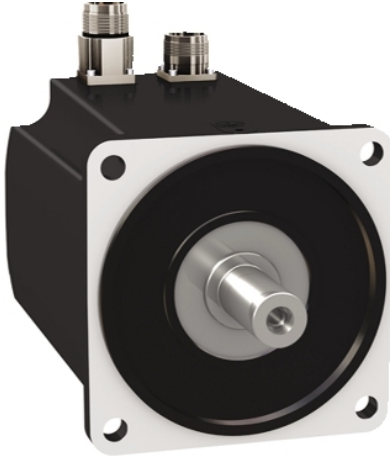


BMH1401P16A1A

servo motor BMH, Lexium 32, 10.3Nm,
4000rpm, keyed shaft, without brake, IP54,
16bit encoder, straight



Main

| | |
|---------------------------|--|
| Product or Component Type | Servo motor |
| Device short name | BMH |
| Maximum mechanical speed | 4000 rpm |
| Continuous stall torque | 91.16 Lbf.In (10.3 N.m) LXM32.D30M2 10 A, 230 V, single phase 91.16 Lbf.In (10.3 N.m) LXM32.D30N4 10 A, 400 V, three phase 91.16 lbf.in (10.3 N.m) LXM32.D30N4 10 A, 480 V, three phase |
| Peak stall torque | 272.60 Lbf.In (30.8 N.m) LXM32.D30M2 10 A, 230 V, single phase 272.60 Lbf.In (30.8 N.m) LXM32.D30N4 10 A, 400 V, three phase 272.60 lbf.in (30.8 N.m) LXM32.D30N4 10 A, 480 V, three phase |
| Nominal output power | 1450 W LXM32.D30M2 10 A, 230 V, single phase 2400 W LXM32.D30N4 10 A, 400 V, three phase 2400 W LXM32.D30N4 10 A, 480 V, three phase |
| Nominal torque | 61.07 Lbf.In (6.9 N.m) LXM32.D30M2 10 A, 230 V, single phase 68.15 Lbf.In (7.7 N.m) LXM32.D30N4 10 A, 400 V, three phase 68.15 lbf.in (7.7 N.m) LXM32.D30N4 10 A, 480 V, three phase |
| Nominal speed | 2000 rpm LXM32.D30M2 10 A, 230 V, single phase 3000 rpm LXM32.D30N4 10 A, 400 V, three phase 3000 rpm LXM32.D30N4 10 A, 480 V, three phase |
| Product compatibility | LXM32.D30M2 230 V single phase LXM32.D30N4 400...480 V three phase |
| Shaft end | Keyed |
| IP Degree of Protection | IP54 standard |
| Speed feedback resolution | 32768 points/turn |
| Holding brake | Without |
| Mounting Support | International standard flange |
| Electrical Connection | Straight connectors |

Complementary

| | |
|---------------------------|--|
| Range Compatibility | Lexium 32 |
| [Us] rated supply voltage | 480 V |
| Phase | Three phase |
| Continuous stall current | 8.58 A |
| Continuous power | 2.85 W |
| Maximum current Irms | 29.8 A LXM32.D30M2 29.8 A LXM32.D30N4 |
| Maximum permanent current | 29.8 A |
| Second shaft | Without second shaft end |
| Shaft diameter | 0.94 in (24 mm) |
| Shaft length | 1.97 in (50 mm) |
| Key width | 1.57 in (40 mm) |

The information provided in this documentation contains general descriptions and/or technical characteristics of the performance of the products contained herein. This documentation is not intended as a substitute for and is not to be used for determining suitability or reliability of these products for specific user applications. It is the duty of any such user or integrator to perform the appropriate and complete risk analysis, evaluation and testing of the products with respect to the relevant specific application or use thereof. Neither Schneider Electric Industries SAS nor any of its affiliates or subsidiaries shall be responsible or liable for misuse of the information contained herein.

| | |
|---------------------------------------|---|
| Feedback type | Single turn SinCos Hiperface |
| Motor flange size | 5.51 in (140 mm) |
| Number of motor stacks | 1 |
| Torque constant | 1.2 N.m/A 248 °F (120 °C) |
| Back emf constant | 77.4 V/krpm 248 °F (120 °C) |
| Number of motor poles | 10 |
| Rotor inertia | 16.46 kg.cm ² |
| Stator resistance | 0.69 Ohm 68 °F (20 °C) |
| Stator inductance | 6.7 mH 68 °F (20 °C) |
| Stator electrical time constant | 9.7 ms 68 °F (20 °C) |
| Maximum radial force Fr | 1930 N 1000 rpm 1530 N 2000 rpm 1340 N 3000 rpm |
| Maximum axial force Fa | 0.2 x Fr |
| Type of cooling | Natural convection |
| Length | 5.98 in (152 mm) |
| Centring collar diameter | 5.12 in (130 mm) |
| Centring collar depth | 0.14 in (3.5 mm) |
| Number of mounting holes | 4 |
| Mounting holes diameter | 0.43 in (11 mm) |
| Circle diameter of the mounting holes | 6.50 in (165 mm) |
| Net Weight | 17.64 lb(US) (8 kg) |

Ordering and shipping details

| | |
|-------------------|------------------------|
| Category | 18282-LEXIUM 32 MOTORS |
| Discount Schedule | PC53 |
| GTIN | 3606485198415 |
| Returnability | No |
| Country of origin | DE |

Packing Units

| | |
|------------------------------|---------------------------|
| Unit Type of Package 1 | PCE |
| Number of Units in Package 1 | 1 |
| Package 1 Height | 7.87 in (20.0 cm) |
| Package 1 Width | 10.24 in (26.0 cm) |
| Package 1 Length | 23.23 in (59.0 cm) |
| Package 1 Weight | 21.29 lb(US) (9.658 kg) |
| Unit Type of Package 2 | P06 |
| Number of Units in Package 2 | 8 |
| Package 2 Height | 30.31 in (77.0 cm) |
| Package 2 Width | 31.50 in (80.0 cm) |
| Package 2 Length | 23.62 in (60.0 cm) |
| Package 2 Weight | 189.08 lb(US) (85.764 kg) |

Offer Sustainability

| | |
|----------------------------|---|
| Sustainable offer status | Green Premium product |
| California proposition 65 | WARNING: This product can expose you to chemicals including: Lead and lead compounds, which is known to the State of California to cause cancer and birth defects or other reproductive harm. For more information go to www.P65Warnings.ca.gov |
| REACH Regulation | REACH Declaration |
| EU RoHS Directive | Pro-active compliance (Product out of EU RoHS legal scope) |
| Mercury free | Yes |
| China RoHS Regulation | China RoHS Declaration |
| RoHS exemption information | Yes |

| | |
|--------------------------|--|
| Environmental Disclosure | Product Environmental Profile |
| Circularity Profile | No need of specific recycling operations |
| WEEE | The product must be disposed on European Union markets following specific waste collection and never end up in rubbish bins. |
| PVC free | Yes |

Contractual warranty

| | |
|----------|-----------|
| Warranty | 18 months |
|----------|-----------|