



## Main

Product	Single Throw Safety Switch
Duty Rating	Heavy duty
Device Application	Heavy application
Disconnect Type	Fusible disconnect
Factory Installed Neutral	None
Phase	3 phase
Number of Poles	3
Current Rating	1200 A
Voltage Rating	600 V AC/DC
Enclosure Rating	NEMA 3R galvanized steel
Motor power hp	200 Hp at 480 V AC 50-60 Hz for 3 phase motors 500 Hp at 480 V AC 50-60 Hz for 3 phase motors 250 Hp at 600 V AC 50-60 Hz for 3 phase motors 500 Hp at 600 V AC 50-60 Hz for 3 phase motors 50 hp at 600 V DC

## Complementary

Short-circuit current	200 kA maximum for L
Fuse type	L
Mounting Type	Surface
Electrical Connection	Lugs
Wiring configuration	4-wire (3PH + N)
Wire Size	AWG 3/0...750 kcmil copper or aluminium
Tightening torque	375 lbf.in (42.37 N.m) 0.13...0.59 in <sup>2</sup> (85.01...380 mm <sup>2</sup> ) (AWG 3/0...750 kcmil)
Depth	17.75 in (450.85 mm)
Width	36.62 in (930.15 mm)
Height	69.13 in (1755.90 mm)
Net Weight	373.02 lb(US) (169.2 kg)

## Environment

Certifications	UL listed file E2875
----------------	----------------------

## Ordering and shipping details

Category	00054-H&HU SW,NEMA3R,400-1200A
Discount Schedule	DE1
GTIN	785901259329
Returnability	Yes
Country of origin	US

## Packing Units

Unit Type of Package 1	PCE
Number of Units in Package 1	1
Package 1 Height	73.82 in (187.5 cm)
Package 1 Width	30.00 in (76.2 cm)
Package 1 Length	37.99 in (96.5 cm)
Package 1 Weight	373.00 lb(US) (169.19 kg)

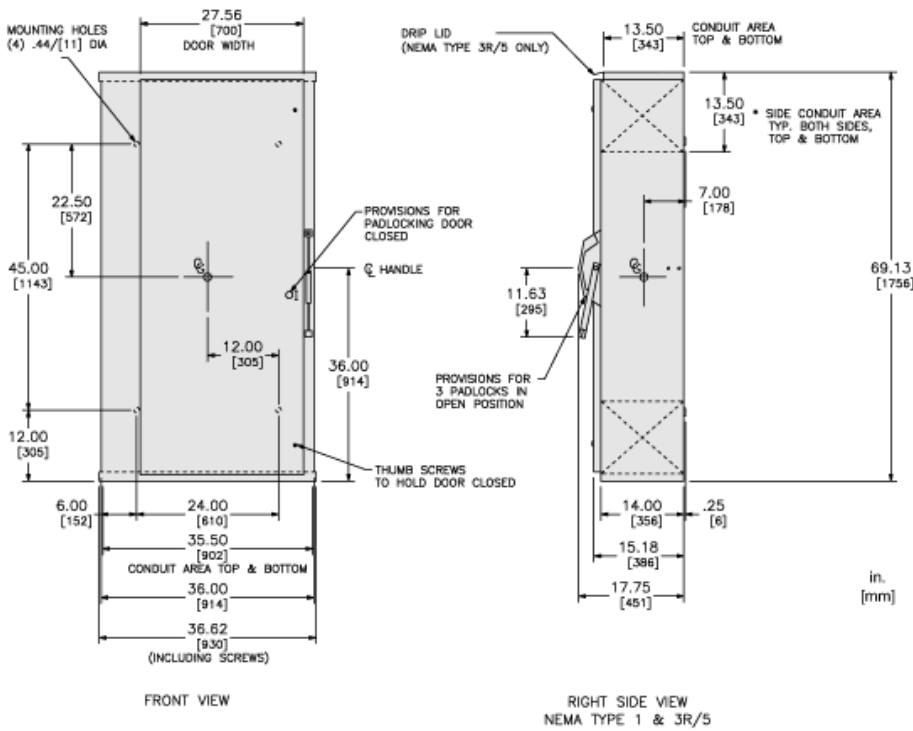
## Offer Sustainability

Sustainable offer status	Green Premium product
California proposition 65	WARNING: This product can expose you to chemicals including: Lead and lead compounds, which is known to the State of California to cause cancer and birth defects or other reproductive harm. For more information go to <a href="http://www.P65Warnings.ca.gov">www.P65Warnings.ca.gov</a>
REACH Regulation	<a href="#">REACH Declaration</a>
EU RoHS Directive	Compliant with Exemptions
Mercury free	Yes
China RoHS Regulation	<a href="#">China RoHS Declaration</a>
RoHS exemption information	<a href="#">Yes</a>
Environmental Disclosure	<a href="#">Product Environmental Profile</a>
Circularity Profile	No need of specific recycling operations
PVC free	Yes
Halogen content performance	Halogen free plastic parts product

## Contractual warranty

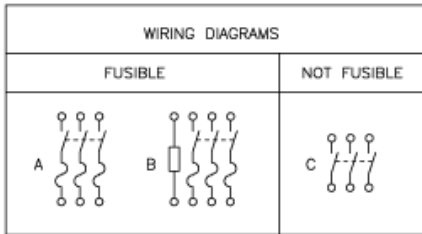
Warranty	18 months
----------	-----------

Approximate Dimensions



CATALOG NUMBER	VOLTAGE RATINGS	WIRING DIAG.	3 PHASE HORSEPOWER RATINGS						DC HORSEPOWER RATINGS			
			240VAC		480VAC		600VAC		250VDC		600VDC	
			STD	MAX.	STD	MAX.	STD	MAX.	STD	MAX.	STD	MAX.
H32B	240VAC;250VDC	A	100	250	-	-	-	-	50	50	-	-
H32BR	240VAC;250VDC	A	100	250	-	-	-	-	50	50	-	-
H32BN	240VAC;250VDC	B	100	250	-	-	-	-	50	50	-	-
H32BNR	240VAC;250VDC	B	100	250	-	-	-	-	50	50	-	-
H36B	600VAC;600VDC	A	100	250	200	500	250	500	-	-	50	50
H36BR	600VAC;600VDC	A	100	250	200	500	250	500	-	-	50	50
H36BN	600VAC;600VDC	B	100	250	200	500	250	500	-	-	50	50
H36BNR	600VAC;600VDC	B	100	250	200	500	250	500	-	-	50	50
HU36B	600VAC;600VDC	C	100	100	-	500	-	500	-	-	50	50
HU36BR	600VAC;600VDC	C	100	100	-	500	-	500	-	-	50	50

Wiring Diagrams



TERMINAL LUGS			
AMPERES	MAX. WIRE	MIN. WIRE	TYPE
1200	(4)750 KCMIL	(4)#3/0 AWG	75°C AL OR CU

FUZE PROVISIONS			
AMPERES	TYPE	AMPERES	TYPE
1200	CLASS "L"	800	CLASS "L"