

IE-XM-RJ45/IDC**Weidmüller Interface GmbH & Co. KG**

Klingenbergstraße 26

D-32758 Detmold

Germany

www.weidmueller.com



Mounting rail outlet, RJ45 module design according to IEC 60603-7-51, for wires with diameters up to 1.6 mm

General ordering data

| | |
|------------|---|
| Version | Mounting rail outlet, RJ45, RJ45 module, IP20, Cat.6A / Class EA (ISO/IEC 11801 2010) |
| Order No. | 8808360000 |
| Type | IE-XM-RJ45/IDC |
| GTIN (EAN) | 4032248505944 |
| Qty. | 1 pc(s). |

Creation date November 26, 2024 11:46:29 AM CET

Catalogue status 26.11.2024 / We reserve the right to make technical changes.

IE-XM-RJ45/IDC

Weidmüller Interface GmbH & Co. KG

Klingenbergstraße 26

D-32758 Detmold

Germany

www.weidmueller.com

Technical data

Dimensions and weights

Net weight 53 g

Temperatures

Operating temperature -25 °C...70 °C

General data

| | | | |
|--------------------------------|---|--|---|
| Connection 1 | RJ45 | Connection 2 | IDC |
| Description of article | | Configuration | 1 TE pitch dimension acc. to DIN 43880. insta-compatible Installation flange with mounting frame |
| Wiring | RJ45 module EIA/TIA T568 A, EIA/TIA T568 B, PROFINET | Colour | Light Grey |
| Housing main material | PA 66, UL 94: V-0 | Insulation cross-section, min. | 0.7 mm |
| Insulation cross-section, max. | 1.6 mm | Category | Cat.6A / Class EA (ISO/IEC 11801 2010) |
| Connection diameter, solid | 0.4...0.64 mm | Conductor connection cross-section, solid (AWG) | AWG 24...AWG 22 |
| Connection diameter, flexible | 0.48...0.64 mm | Conductor connection cross-section, flexible (AWG) | AWG 26...AWG 22 |
| Sheath diameter, min. | 5.5 mm | Sheath diameter, max. | 10 mm |
| Type of mounting | TS 35 | Shielding | Yes |
| Protection degree | IP20 | Plugging cycles | 750 (RJ45) |

Electrical properties

| | | | |
|--|----------------|---------------------------------------|----------------------------|
| Contact resistance | ≤ 20 mΩ | Current-carrying capacity at 50 °C | 1 A |
| Dielectric strength, contact / contact | ≥ 1000 V AC/DC | Dielectric strength, contact / shield | ≥ 1500 V AC/DC |
| Insulation strength | 500 MΩ | PoE / PoE+ | conforming to IEEE 802.3at |

General standards

| | | | |
|-----------------------|---------------|-------------------------|---------|
| Certificate No. (DNV) | TAE00003EW | Certificate no. (cULus) | E316369 |
| Connector standard | IEC 60603-7-5 | | |

Classifications

| | | | |
|-------------|-------------|-------------|-------------|
| ETIM 6.0 | EC000313 | ETIM 7.0 | EC000313 |
| ETIM 8.0 | EC000313 | ETIM 9.0 | EC000313 |
| ECLASS 9.0 | 27-44-03-20 | ECLASS 9.1 | 19-17-01-25 |
| ECLASS 10.0 | 27-44-03-20 | ECLASS 11.0 | 27-44-03-20 |
| ECLASS 12.0 | 27-44-03-20 | ECLASS 13.0 | 27-44-03-20 |
| ECLASS 14.0 | 27-44-03-20 | | |

Environmental Product Compliance

| | |
|------------------------|-----------------------------|
| RoHS Compliance Status | Compliant without exemption |
| REACH SVHC | No SVHC above 0.1 wt% |

IE-XM-RJ45/IDC

Weidmüller Interface GmbH & Co. KG
 Klingenbergstraße 26
 D-32758 Detmold
 Germany

www.weidmueller.com

Technical data

Approvals

Approvals



| | |
|-------------------------|------------|
| ROHS | Conform |
| UL File Number Search | UL Website |
| Certificate no. (cULus) | E316369 |

Downloads

| | |
|---|---|
| Approval/Certificate/Document of Conformity | GOST Approval DUXR.E316369 |
| Engineering Data | CAD data – STEP |
| User Documentation | MAN IE GUIDE DE MAN IE GUIDE EN Manual |
| Catalogues | Catalogues in PDF-format |
| Brochures | FL FIELDWIRING EN PI PROFINET CABLING EN PI PROFINET CABLING EN |

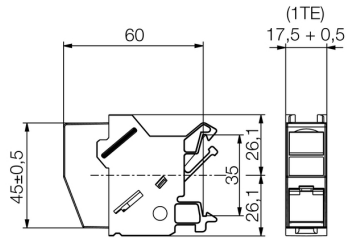
IE-XM-RJ45/IDC

Weidmüller Interface GmbH & Co. KG
Klingenbergstraße 26
D-32758 Detmold
Germany

www.weidmueller.com

Drawings

Dimensioned drawing



Product image

