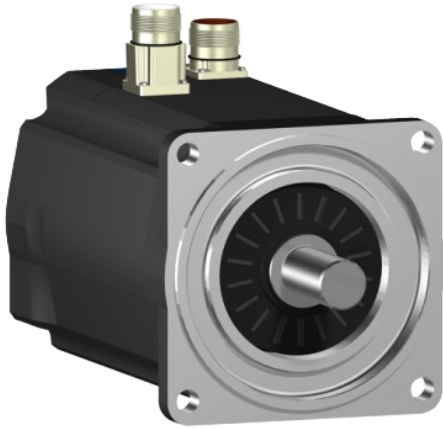


SH31004P12F1200

servo motor SH3 100

10Nm,key,multi,brake,str.conn,IP65/IP67,6k
RPM



Main

Range Compatibility	PacDrive 3
Product or Component Type	Servo motor
Device short name	SH3.....P

Complementary

Maximum mechanical speed	6000 rpm
[Us] rated supply voltage	115...480 V
Phase	Three phase
Continuous stall current	6.2 A
Continuous stall torque	88.51 lbf.in (10 N.m) 115...480 V three phase
Continuous power	2500 W
Peak stall torque	358.45 lbf.in (40.5 N.m) 115...480 V three phase
Nominal output power	780 W 115 V single phase 1490 W 230 V single phase 2480 W 400 V three phase 2600 W 480 V three phase
Nominal torque	87.62 Lbf.In (9.9 N.m) 115 V single phase 84.08 Lbf.In (9.5 N.m) 230 V single phase 69.92 Lbf.In (7.9 N.m) 400 V three phase 61.07 lbf.in (6.9 N.m) 480 V three phase
Nominal speed	750 rpm 115 V single phase 1500 rpm 230 V single phase 3000 rpm 400 V three phase 3600 rpm 480 V three phase
Maximum current Irms	32.3 A
Shaft end	Parallel key
Shaft diameter	0.94 in (24 mm)
Shaft length	1.97 in (50 mm)
Key width	0.31 in (8 mm)
IP degree of protection	Motor IP65 EN/IEC 60034-5 Shaft bushing IP65 EN/IEC 60034-5 Housing IP67 EN/IEC 60034-5
Encoder type	Absolute multitrans SinCos Hiperface
Speed feedback resolution	128 periods
Holding brake	With
Holding torque	106.21 lbf.in (12 N.m)
Mounting Support	International standard flange
Motor flange size	3.94 in (100 mm)
Electrical Connection	Straight connector
Torque constant	1.62 N.m/A 248 °F (120 °C)
Back emf constant	103 V/krpm 68 °F (20 °C)
Number of motor poles	4

The information provided in this documentation contains general descriptions and/or technical characteristics of the performance of the products contained herein. This documentation is not intended as a substitute for and is not to be used for determining suitability or reliability of these products for specific user applications. It is the duty of any such user or integrator to perform the appropriate and complete risk analysis, evaluation and testing of the products with respect to the relevant specific application or use thereof. Neither Schneider Electric Industries SAS nor any of its affiliates or subsidiaries shall be responsible or liable for misuse of the information contained herein.

Rotor inertia	5.245 kg.cm ²
Stator resistance	1.81 Ohm
Stator inductance	18.35 mH
Maximum radial force Fr	1070 N 1000 rpm 850 N 2000 rpm 740 N 3000 rpm
Maximum axial force Fa	160 N
Type of cooling	Natural convection
Length	12.11 in (307.5 mm)
Centring collar diameter	3.74 in (95 mm)
Centring collar depth	0.14 in (3.5 mm)
Number of mounting holes	4
Mounting holes diameter	0.35 in (9.0 mm)
Circle diameter of the mounting holes	4.53 in (115 mm)
Net Weight	21.83 lb(US) (9.9 kg)

Ordering and shipping details

Category	18359-PACDRIVE3 SERVO MOTORS
Discount Schedule	PC52
Returnability	No

Packing Units

Unit Type of Package 1	PCE
Number of Units in Package 1	1
Package 1 Height	0.39 in (1 cm)
Package 1 Width	0.39 in (1 cm)
Package 1 Length	0.39 in (1 cm)
Package 1 Weight	2.20 lb(US) (1 kg)

Contractual warranty

Warranty	18 months
----------	-----------