

RMMD COMPACT REMOTE

MR16 SURFACE MOUNT
 SINGLE, DOUBLE OR TRIPLE
 6 V, 12 V, & 24 V LAMPS



The RMMD series of commercial MR16 remotes provides exceptional light output in a compact, traditional design. The die cast, all metal housing is fully adjustable with a friction lock tilt and swivel that can be locked in place with a rear mounted set screw. The canopy is designed to mount directly to typical electrical junction boxes. Available in 6 V, 12 V and 24 V models, all utilizing low glare, MR16 quartz halogen or LED lamps.

FEATURES & SPECIFICATIONS




MECHANICAL

- Die cast, solid metal housing with die cast, twist lock lamp collar
- Complete adjustability - both tilt and swivel
- 5" diameter canopy standard
- Two canopy mounting holes designed to match standard electrical junction boxes
- White paint finish is standard, black color is optional

- MR16 lamp designed with low glare reflector and available in 6 VDC, 12 VDC or 24 VDC

APPROVALS

- CSA Certified to C22.2 #141-15
- Meets requirements of ICES-005

OVERVIEW			
LIGHT SOURCE		LED, INCANDESCENT	
INPUT VOLTAGE (VDC)		6, 12, 24	
 QUICKSHIP	 ICES 005		

QUICK SHIP ORDERING GUIDE



PART NO	DC VOLTS (VDC)	NBR OF HEADS	HEAD	LAMP (W)	LIGHT SOURCE	COLOR
RMMD1-06-24V4WLR/WH	6-24	1	RMMD	4	LED	WHITE
RMMD2-06-24V4WLR/WH	6-24	2	RMMD	4	LED	WHITE

QUICK SHIP: Product availability is subject to change without notice. Please contact your AimLite customer service representative to confirm inventory levels at time of order.

ORDERING GUIDE - LED

RMMD [] - [] / []

SERIES	NBR OF HEADS	VOLTS (VDC OPERATIONAL)	WATTS (W)	LAMP TYPE	COLOR	OPTIONS
RMMD	1 - SINGLE HEAD 2 - DOUBLE HEAD 3 - TRIPLE HEAD 4 - QUAD HEAD (REQUIRE 12" DIA. CANOPY)	06-24V - 6 TO 24	4W - 4 5W - 5	LR - LED LA - LED	WHT - WHITE (STANDARD) BLK - BLACK	LCP - LESS CANOPY VDR - TAMPER PROOF SCREWS WGD - WIREGUARD (ORDER SEPARATELY) PGD - LEXAN GUARD
		12-24V - 12 TO 24	6W - 6 7W - 7	LA - LED		

ORDERING GUIDE - INCANDESCENT

RMMD [] - [] / []

SERIES	NBR OF HEADS	VOLTS (VDC)	LAMP	COLOR	OPTIONS
RMMD	1 - SINGLE HEAD 2 - DOUBLE HEAD 3 - TRIPLE HEAD 4 - QUAD HEAD (REQUIRE 12" DIA. CANOPY)	06V - 6	SEE LAMP SELECTION	WHT - WHITE (STANDARD)	LCP - LESS CANOPY VDR - TAMPER PROOF SCREWS WGD - WIREGUARD (ORDER SEPARATELY) PGD - LEXAN GUARD
		12V - 12	CHART BELOW		
		24V - 24			

LAMP SELECTION - INCANDESCENT

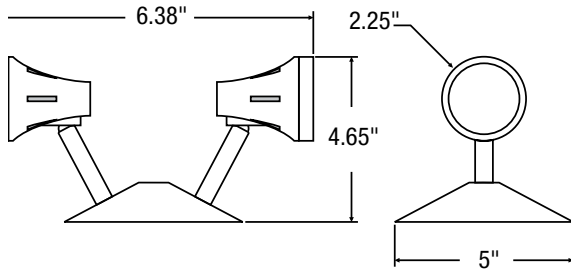
MR16 - SMALL HEAD	6 V	12 V	24 V
QUARTZ HALOGEN	10WQ	12WQ, 20WQ, 35WQ	12WQ, 20WQ, 50WQ

WIREGUARD¹

	PART NUMBER	DIMENSIONS (IN)
1 HEAD	WGD550	8.5 X 6 X 7
2 HEADS	WGD550	8.5 X 6 X 7

¹ Please contact AimLite customer service representative for more information

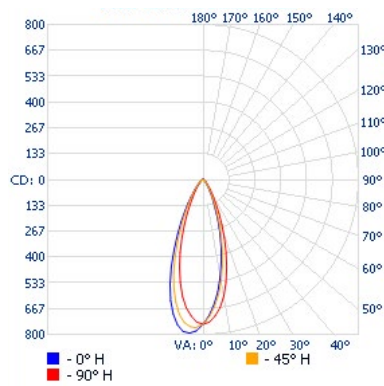
DIMENSIONS



PHOTOMETRIC DATA¹

MR16-06-24V4WLR • 228.7 LM

POLAR CANDELA DISTRIBUTION



ZONAL LUMEN SUMMARY

ZONE	LUMENS	% FIXTURE
0-30	164.4	71.9%
0-40	182.0	79.6%
0-60	214.8	93.9%
60-90	13.9	6.1%
70-100	4.1	1.8%
90-120	0	0%
0-90	228.7	100%
90-180	0	0%
0-180	228.7	100%

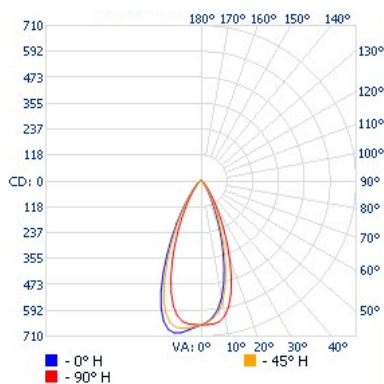
ILLUMINANCE AT A DISTANCE

CENTER BEAM FC		BEAM WIDTH
1.7'	168	
3.3'	44.5	2.1'
5.0	19.4	3.2'
6.7	10.8	4.3'
8.3	7.04	5.3'
10.0	4.85	6.4'

■ Beam. Spread: 35.4°

MR16-06-24V5WLA • 440.7 LM

POLAR CANDELA DISTRIBUTION



ZONAL LUMEN SUMMARY

ZONE	LUMENS	% FIXTURE
0-30	352.6	80%
0-40	391.8	88.9%
0-60	427.2	96.9%
60-90	13.5	3.1%
70-100	4.3	1%
90-120	0	0%
0-90	440.7	100%
90-180	0	0%
0-180	440.7	100%

ILLUMINANCE AT A DISTANCE

CENTER BEAM FC		BEAM WIDTH	
1.7'	407	0.9'	1.0'
3.3'	108	1.7'	1.9'
5.0	47.0	2.6'	2.8'
6.7	26.2	3.5'	3.8'
8.3	17.1	4.3'	4.7'
10.0	11.8	5.2'	5.7'

■ Vert. Spread: 29.3° ■ Hor. Spread: 31.7°

¹ Complete IES files available on our website.

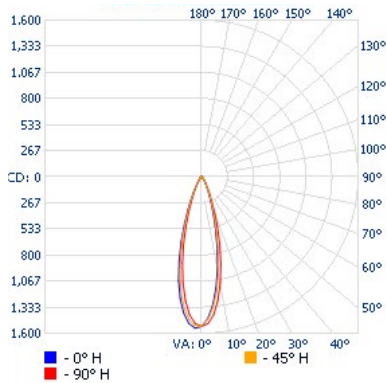
Data is based upon tests performed in a controlled environment. Actual performance can vary depending on operating conditions.

All products are subject to change or may be discontinued any time without notice.

PHOTOMETRIC DATA¹

MR16-12-24V6WLA • 508.7 LM

POLAR CANDELA DISTRIBUTION



ZONAL LUMEN SUMMARY

ZONE	LUMENS	% FIXTURE
0-30	407.0	80%
0-40	452.3	88.9%
0-60	493.1	96.9%
60-90	15.6	3.1%
70-100	4.9	1%
90-120	0	0%
0-90	508.7	100%
90-180	0	0%
0-180	508.7	100%

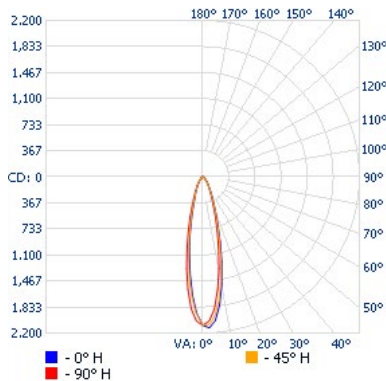
ILLUMINANCE AT A DISTANCE

CENTER BEAM FC		BEAM WIDTH	
1.7'	470	0.9'	1.0'
3.3'	125	1.7'	1.9'
5.0	54.3	2.6'	2.8'
6.7	30.2	3.5'	3.8'
8.3	19.7	4.3'	4.7'
10.0	13.6	5.2'	5.7'

■ Vert. Spread: 29.3° ■ Hor. Spread: 31.7°

MR16-06-24V7WLA • 635.2 LM

POLAR CANDELA DISTRIBUTION



ZONAL LUMEN SUMMARY

ZONE	LUMENS	% FIXTURE
0-30	508.2	80%
0-40	564.7	88.9%
0-60	615.7	96.9%
60-90	19.5	3.1%
70-100	6.1	1%
90-120	0	0%
0-90	635.2	100%
90-180	0	0%
0-180	635.2	100%

ILLUMINANCE AT A DISTANCE

CENTER BEAM FC		BEAM WIDTH	
1.7'	587	0.9'	1.0'
3.3'	156	1.7'	1.9'
5.0	67.8	2.6'	2.8'
6.7	37.8	3.5'	3.8'
8.3	24.6	4.3'	4.7'
10.0	16.9	5.2'	5.7'

■ Vert. Spread: 29.3° ■ Hor. Spread: 31.7°

¹ Complete IES files available on our website.

Data is based upon tests performed in a controlled environment. Actual performance can vary depending on operating conditions.

All products are subject to change or may be discontinued any time without notice.