

Rittal – The System.

Faster – better – everywhere.

▶ TS System Chassis 17 x 73 mm for TS, TE – TS 8612.080

Date : Jan 6, 2016

ENCLOSURES

POWER DISTRIBUTION

CLIMATE CONTROL

IT INFRASTRUCTURE

SOFTWARE & SERVICES

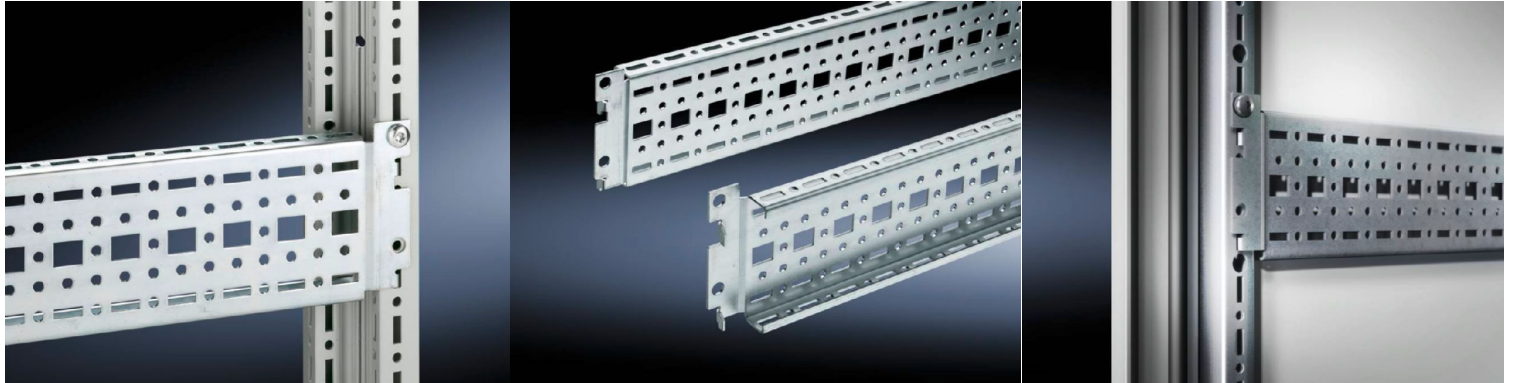
FRIEDHELM LOH GROUP



TS System Chassis 17 x 73 mm for TS, TE – TS

8612.080

created : 06.01.2016 build on www.rittal.com/ca-en



Product description

Description: Variable, with 5 rows of holes for universal skeleton structures or partial assembly. Simply locate into the 482.6 mm (19") system punchings and secure.

Material: Carbon steel

Surface finish: Zinc-plated

Assembly instruction: The rail for internal mounting is required when installing in CM, TP

Supply includes: Assembly screws

Packaging unit: 4 pc(s).

EAN: 4028177212107


Customs tariff number: 73269098

eCl@ss 5.1: 27189250

eCl@ss 7.0: 23159101

ETIM 6.0: EC002625

Product features

Version:	For the inner mounting level and for mounting on doors
Suitable for:	Width/depth: 800 mm
Dimensions:	Length: 790 mm (31 ")
Installation options:	For SE, may additionally be mounted on the top horizontal section in the depth In the tubular door frame for TS, SE and PC In CM and TP via rail for interior fitting: in the depth, for outer mounting level. In the width, for inner mounting level.
Suitable for door width:	900 mm
Weight/pack:	3.58 kg (7.9 lb.)
Downloads	
Data sheets:	 Technical details EN
CAD drawings:	Request