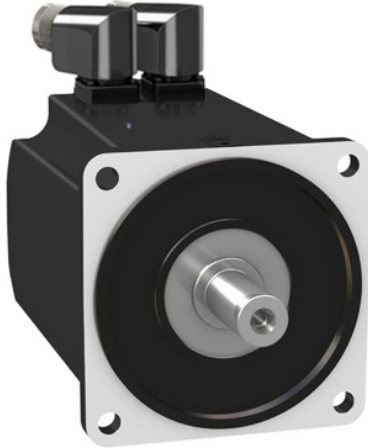


BMH1401P06A2A

servo motor BMH, Lexium 32, 10.3Nm,
4000rpm, untapped shaft, without brake, IP54,
16bit encoder



Main

Product or Component Type	Servo motor
Device short name	BMH
Maximum mechanical speed	4000 rpm
Continuous stall torque	91.16 Lbf.In (10.3 N.m) LXM32.D30M2 10 A, 230 V, single phase 91.16 Lbf.In (10.3 N.m) LXM32.D30N4 10 A, 400 V, three phase 91.16 lbf.in (10.3 N.m) LXM32.D30N4 10 A, 480 V, three phase
Peak stall torque	272.60 Lbf.In (30.8 N.m) LXM32.D30M2 10 A, 230 V, single phase 272.60 Lbf.In (30.8 N.m) LXM32.D30N4 10 A, 400 V, three phase 272.60 lbf.in (30.8 N.m) LXM32.D30N4 10 A, 480 V, three phase
Nominal output power	1450 W LXM32.D30M2 10 A, 230 V, single phase 2400 W LXM32.D30N4 10 A, 400 V, three phase 2400 W LXM32.D30N4 10 A, 480 V, three phase
Nominal torque	61.07 Lbf.In (6.9 N.m) LXM32.D30M2 10 A, 230 V, single phase 68.15 Lbf.In (7.7 N.m) LXM32.D30N4 10 A, 400 V, three phase 68.15 lbf.in (7.7 N.m) LXM32.D30N4 10 A, 480 V, three phase
Nominal speed	2000 rpm LXM32.D30M2 10 A, 230 V, single phase 3000 rpm LXM32.D30N4 10 A, 400 V, three phase 3000 rpm LXM32.D30N4 10 A, 480 V, three phase
Product compatibility	LXM32.D30M2 230 V single phase LXM32.D30N4 400...480 V three phase
Shaft end	Smooth shaft
IP Degree of Protection	IP54 standard
Speed feedback resolution	32768 points/turn
Holding brake	Without
Mounting Support	International standard flange
Electrical Connection	Rotatable right-angled connectors

Complementary

Range Compatibility	Lexium 32
[Us] rated supply voltage	480 V
Phase	Three phase
Continuous stall current	8.58 A
Continuous power	2.85 W
Maximum current Irms	29.8 A LXM32.D30M2 29.8 A LXM32.D30N4
Maximum permanent current	29.8 A
Second shaft	Without second shaft end
Shaft diameter	0.94 in (24 mm)
Shaft length	1.97 in (50 mm)
Feedback type	Single turn SinCos Hiperface

The information provided in this documentation contains general descriptions and/or technical characteristics of the performance of the products contained herein. This documentation is not intended as a substitute for and is not to be used for determining suitability or reliability of these products for specific user applications. It is the duty of any such user or integrator to perform the appropriate and complete risk analysis, evaluation and testing of the products with respect to the relevant specific application or use thereof. Neither Schneider Electric Industries SAS nor any of its affiliates or subsidiaries shall be responsible or liable for misuse of the information contained herein.

Motor flange size	5.51 in (140 mm)
Number of motor stacks	1
Torque constant	1.2 N.m/A 248 °F (120 °C)
Back emf constant	77.4 V/krpm 248 °F (120 °C)
Number of motor poles	10
Rotor inertia	16.46 kg.cm ²
Stator resistance	0.69 Ohm 68 °F (20 °C)
Stator inductance	6.7 mH 68 °F (20 °C)
Stator electrical time constant	9.7 ms 68 °F (20 °C)
Maximum radial force Fr	1930 N 1000 rpm 1530 N 2000 rpm 1340 N 3000 rpm
Maximum axial force Fa	0.2 x Fr
Type of cooling	Natural convection
Length	5.98 in (152 mm)
Centring collar diameter	5.12 in (130 mm)
Centring collar depth	0.14 in (3.5 mm)
Number of mounting holes	4
Mounting holes diameter	0.43 in (11 mm)
Circle diameter of the mounting holes	6.50 in (165 mm)
Net Weight	17.64 lb(US) (8 kg)

Ordering and shipping details

Category	18282-LEXIUM 32 MOTORS
Discount Schedule	PC53
GTIN	3606480160868
Returnability	No
Country of origin	DE

Packing Units

Unit Type of Package 1	PCE
Number of Units in Package 1	1
Package 1 Height	9.84 in (25 cm)
Package 1 Width	7.87 in (20 cm)
Package 1 Length	23.23 in (59 cm)
Package 1 Weight	21.71 lb(US) (9.848 kg)
Unit Type of Package 2	S06
Number of Units in Package 2	8
Package 2 Height	28.94 in (73.5 cm)
Package 2 Width	23.62 in (60 cm)
Package 2 Length	31.50 in (80 cm)
Package 2 Weight	202.31 lb(US) (91.768 kg)
Unit Type of Package 3	P06
Number of Units in Package 3	8
Package 3 Height	30.31 in (77 cm)
Package 3 Width	31.50 in (80 cm)
Package 3 Length	23.62 in (60 cm)
Package 3 Weight	192.43 lb(US) (87.284 kg)

Offer Sustainability

Sustainable offer status	Green Premium product
California proposition 65	WARNING: This product can expose you to chemicals including: Lead and lead compounds, which is known to the State of California to cause cancer and birth defects or other reproductive harm. For more information go to www.P65Warnings.ca.gov
REACH Regulation	REACH Declaration
EU RoHS Directive	Pro-active compliance (Product out of EU RoHS legal scope)
Mercury free	Yes
China RoHS Regulation	China RoHS Declaration
RoHS exemption information	Yes
Environmental Disclosure	Product Environmental Profile
Circularity Profile	No need of specific recycling operations
WEEE	The product must be disposed on European Union markets following specific waste collection and never end up in rubbish bins.
PVC free	Yes

Contractual warranty

Warranty	18 months
----------	-----------