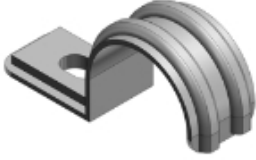


4160-C

T&B Industrial Fitting

EMT fitting Pipe strap made of steel with a size of 3/4 in.



General

Type:	Electrical Metallic Tubing (EMT) Fittings
Application:	Elongated bolt hole makes alignment easy, even when holes in mounting surface are out of alignment.
T&B UPC:	78621036092
T&B Status:	M
Special Features:	Conforms to CEC 12-1404
Material:	Steel

Dimension Information

Size (in.):	3/4
Dimension A (in.):	2-1/32
Dimension B (in.):	3/4
Dimension C (in.):	1/4