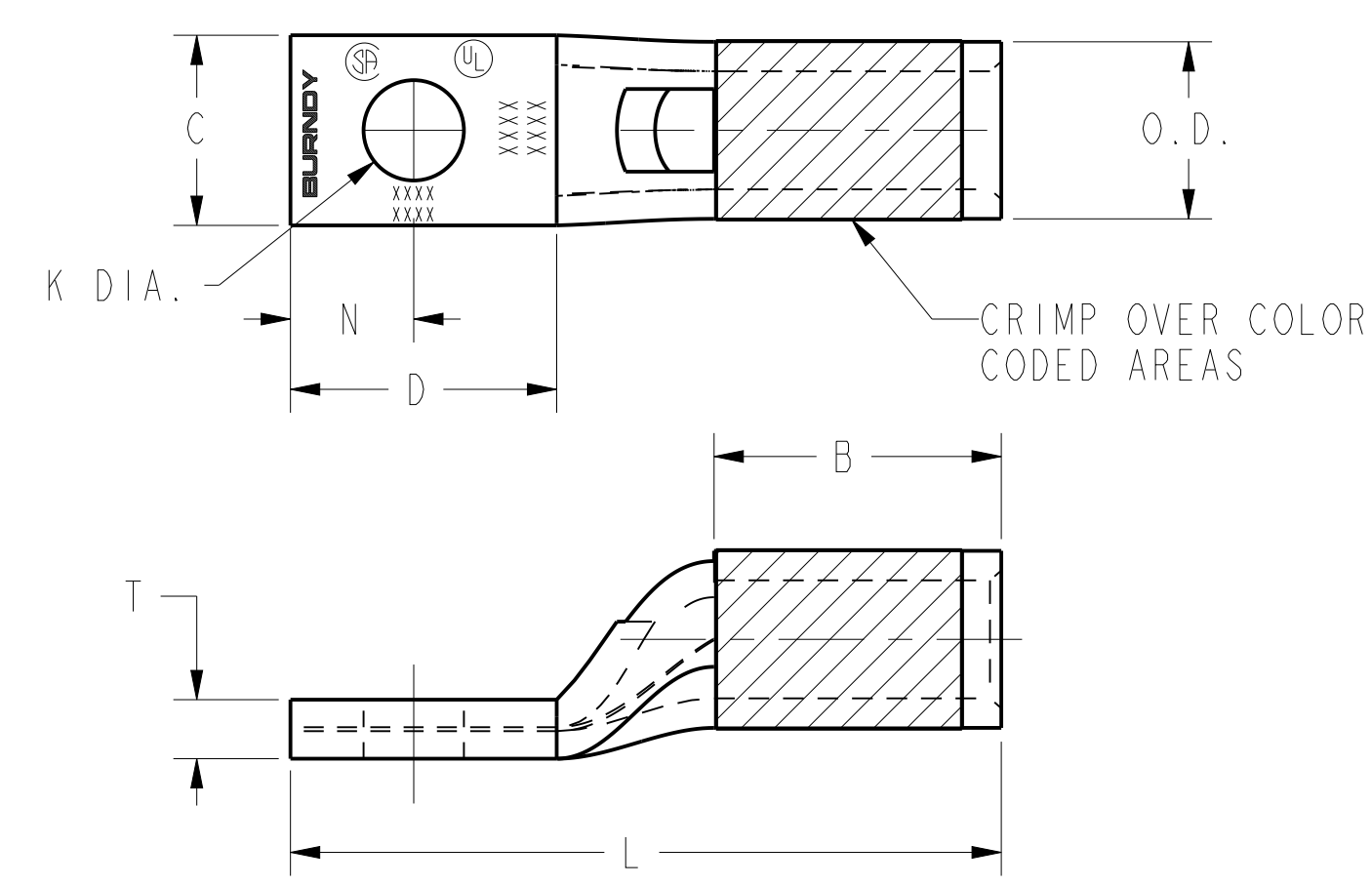


CATALOG NUMBER	FIG. NO.	CONDUCTOR		STUD HOLE SIZE	DIMENSIONS								DIELESS (# OF CRIMPS)	INSTALLATION TOOLING										WIRE STRIP LENGTH
		AWG	MM ²		O.D.	B	C	D MIN.	K DIA.	L	N	T		MECHANICAL		HYDRAULIC						COLOR CODE	DIE INDEX	
														MD6, OUR840, MD7-34R	BCT500HS, Y500CTS	Y35, Y39, Y750, PAT750	Y46 PAT46	Y45	Y48	Y60				
YA8CLNT6	I	#8 AWG	10	6	.27 [7]	.44 [11]	.29 [7]	.41 [10]	.15 [4]	1.08 [27]	.19 [5]	.09 [2]	Y8MRB1 (1) MY293 (1) MRC840 (1) Y81KFT (1) PAT81KFT (1) YIMRTC (1) Y122CMR (1)	W8CVT (1)	X8CRT (1)	U8CRT (1)	U8CRT (1)	U8CRT (1)	--	--	RED	49	1/2"	
YA8CLNT8	I			8	.27 [7]	.44 [11]	.33 [8]	.47 [12]	.18 [5]	1.18 [30]	.22 [6]	.09 [2]												
YA8CLNT10	I			8	.27 [7]	.44 [11]	.33 [8]	.52 [13]	.20 [5]	1.18 [30]	.22 [6]	.09 [2]												
YA6CLNT6	I	#6 AWG	--	6	.29 [7]	.54 [14]	.29 [7]	.41 [10]	.15 [4]	1.17 [30]	.19 [5]	.09 [2]	MY29-3 (1) YIMRTC (2) Y122CMR (2) MY29-11 (1) MRC840 Y644HS (1) Y81KFT (1) Y81KFTMBH (1) PAT81KFT-18V (1) PAT644 (1) PAT444 (1)	W5CVT (1)	X5CRT (1)	U5CRT (1)	U5CRT (1)	U5CRT (1)	--	--	BLUE	7	7/8"	
YA4CLNT10	I	#4 AWG	--	#10	.34 [9]	.81 [21]	.40 [10]	.64 [16]	.20 [5]	1.73 [44]	.31 [8]	.09 [2]												
YA3CLNT14	I	#3 AWG #2SOL.	25	1/4"	.38 [10]	.88 [22]	.41 [10]	.70 [18]	.27 [7]	1.82 [46]	.31 [8]	.09 [2]												
YA3CLNT516	I			5/16"	.38 [10]	.88 [22]	.49 [12]	.62 [16]	.33 [8]	1.80 [46]	.25 [6]	.09 [2]												
YA2CLNT10	I	#2 AWG	35	#10	.42 [11]	.88 [22]	.48 [12]	.56 [14]	.20 [5]	1.80 [46]	.25 [6]	.11 [3]	MY29-3(1) MY29-11 (1) MRC840 Y644HS (1) Y81KFT(1) Y81KFTMBH (1) PAT81KFT-18V (1) PAT644 (1) PAT444 (1)	W2CVT (1)	X2CRT (1)	U2CRT (1)	U2CRT (1)	U2CRT (1)	--	--	BROWN	10	15/16"	
YA2CLNT14	I			1/4"	.42 [11]	.88 [22]	.50 [13]	.56 [14]	.27 [7]	1.80 [46]	.25 [6]	.11 [3]												
YA2CLNT516	I			5/16"	.42 [11]	.88 [22]	.49 [12]	.62 [16]	.33 [8]	1.82 [46]	.25 [6]	.11 [3]												
YA1CLNT10	I	#1 AWG	50	#10	.46 [12]	.88 [22]	.50 [13]	.94 [24]	.20 [5]	2.23 [57]	.25 [6]	.10 [3]	MY29-3(1) MY29-11 (1) MRC840 Y644HS (1) Y81KFT(1) Y81KFTMBH (1) PAT81KFT-18V (1) PAT644 (1) PAT444 (1)	W1CVT (1)	X1CRT-1 (1)	U1CRT-1 (1)	U1CRT-1 (1)	U1CRT-1 (1)	--	--	GREEN	11	15/16"	
YA1CLNT14	I			1/4"	.46 [12]	.88 [22]	.50 [13]	.94 [24]	.27 [7]	2.23 [57]	.25 [6]	.10 [3]												
YA1CLNT516	I	#1 AWG	35	5/16"	.46 [12]	.63 [16]	.44 [11]	.70 [18]	.33 [8]	1.78 [45]	.34 [9]	.10 [3]	YIMRTC(2) MY29-11(1) Y81KFT(1) Y644(1) Y444(1)	W1CVT (1)	X1CRT-1 (1)	U1CRT-1 (1)	U1CRT-1 (1)	U1CRT-1 (1)	--	--	GREEN	11	15/16"	
YA25LNT10	I	1/0 AWG	--	#10	.51 [13]	.88 [22]	.62 [16]	.94 [24]	.20 [5]	2.28 [58]	.33 [8]	.12 [3]	MY29-3(1) MY29-11 (1) MRC840 Y644HS (1) Y81KFT(1) Y81KFTMBH (1) PAT81KFT-18V (1) PAT644 (1) PAT444 (1)	W25CVT (2)	X25RT (2)	U25RT (1)	U25RT (1)	U25RT (1)	--	--	PINK	12	15/16"	
YA25LNT14	I			1/4"	.51 [13]	.88 [22]	.48 [12]	.67 [17]	.27 [7]	1.93 [49]	.31 [8]	.12 [3]												
YA25LNT516	I			5/16"	.51 [13]	.88 [22]	.62 [16]	.94 [24]	.33 [8]	2.28 [58]	.33 [8]	.12 [3]												
YA25LNT38	I			3/8"	.51 [13]	.88 [22]	.62 [16]	.85 [22]	.41 [10]	2.18 [55]	.41 [10]	.12 [3]												
YA26LNT10	I	2/0 AWG	70	#10	.56 [14]	.94 [24]	.62 [16]	1.14 [29]	.20 [5]	2.62 [67]	.33 [8]	.13 [3]	MY29-3(1) MY29-11 (1) MRC840 Y644HS (1) Y81KFT(1) Y81KFTMBH (1) PAT81KFT-18V (1) PAT644 (1) PAT444 (1)	W26CVT (2)	X26RT (2)	U26RT (1)	U26RT (1)	U26RT (1)	--	--	BLACK	13	1"	
YA26LNT14	I			1/4"	.56 [14]	.94 [24]	.48 [12]	.59 [15]	.27 [7]	2.02 [51]	.25 [6]	.13 [3]												
YA26LNT516	I			5/16"	.56 [14]	.94 [24]	.62 [16]	1.14 [29]	.33 [8]	2.62 [67]	.33 [8]	.13 [3]												
YA26LNT38	I			3/8"	.56 [14]	.94 [24]	.72 [18]	1.00 [25]	.41 [10]	2.48 [63]	.38 [10]	.12 [3]												

TOLERANCE BLOCK							
CONNECTOR SIZE	TOLERANCES						
	B	C	E	K DIA.	L	N	O.D.
-8C THRU -25	±.06	±.04	±.02	±.02	±.09	±.03	±.01
-26 THRU -34	±.08	±.04	±.02	±.02	±.12	±.03	±.01
-35 AND UP	±.09	±.06	±.02	±.02	±.15	±.06	±.01



- NOTES:
- MATERIAL: COPPER TUBING.
 - FINISH: TIN PLATED.
 - CAT NO. PUADP-1 ADAPTOR IS REQUIRED TO USE "U" DIES IN Y46 SERIES TOOLS.
 - DIMENSIONS IN BRACKETS [] ARE IN MILLIMETERS ROUNDED OFF TO THE NEAREST MILLIMETER, UNLESS OTHERWISE NOTED, AND ARE FOR REFERENCE ONLY.
 - CAT. NO. PT6515 ADAPTER IS REQUIRED TO USE "U" TYPE DIES IN Y45 TOOLS.

TO ORDER BURNDY® PRODUCTS CALL

UNITED STATES
1-800-346-4175 (LONDONDERRY, NH)

CANADA:
1-800-361-6975 (QUEBEC)
1-800-387-6487 (ALL OTHER PROVINCES)

FOR PRODUCT INFO: <http://www.burndy.com>

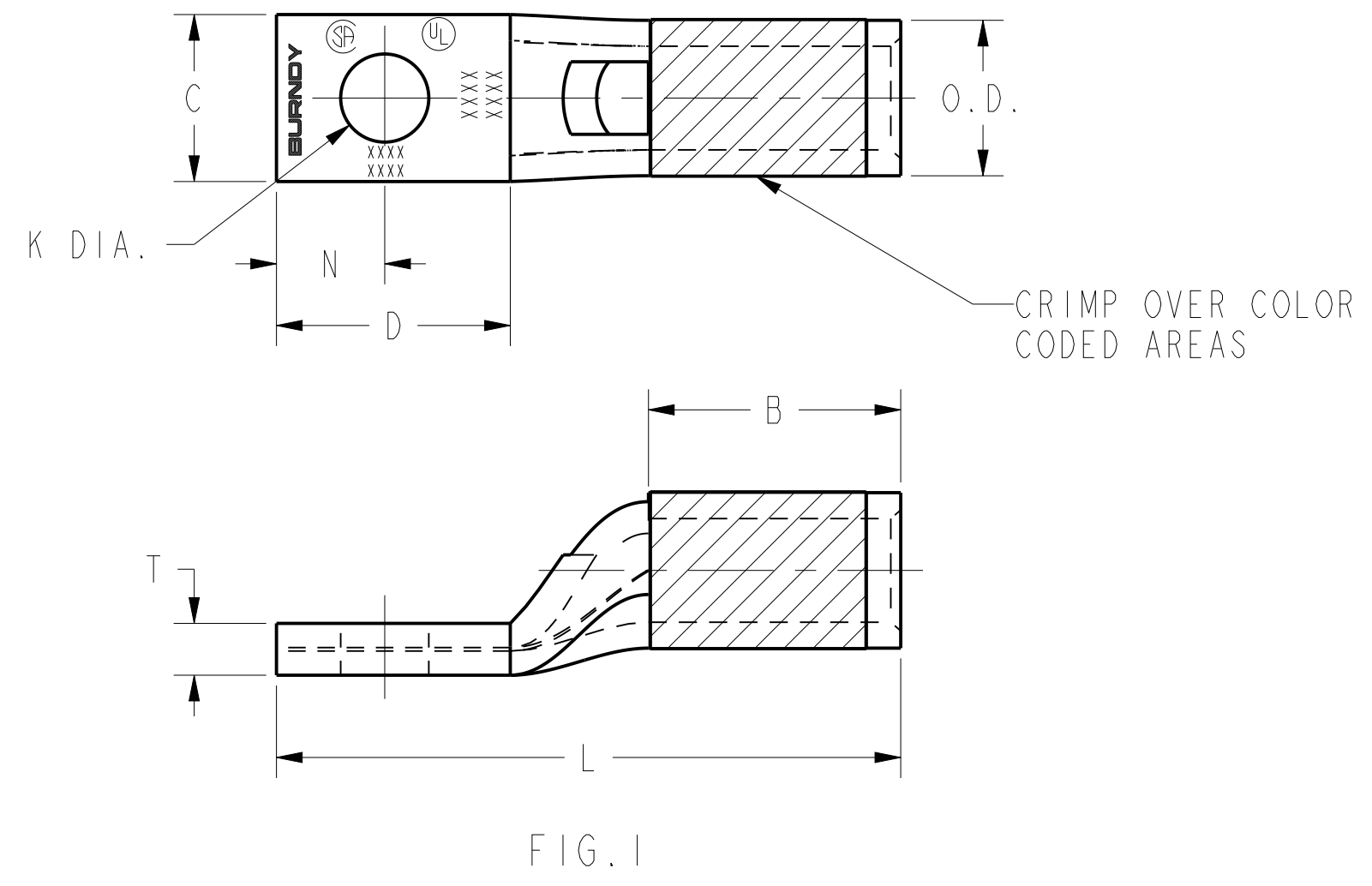
HYLUG™ COPPER (NARROW TONGUE)	
ITEM NO:	N/A
CAT. NO.:	YA-L-NT-(TABLE)
DRAWN BY:	AUGUSTIN.S 07/03/10
CHECKER:	--
DSN APPVL:	J MICHAUD 06/11/11
MFG APPVL:	T THRELFALL 06/23/11
QA APPVL:	T WATTS 06/13/11
MKT APPVL:	J SYLVIA 06/13/11
PROD FAM:	CM&R COMPRESSION
DRAWING NO:	30003952
PROJECT #:	--
DOCUMENT TYPE:	Sales
REL LEVEL:	Released
SCALE:	1:1
REV	W

REV	DATE	DESCRIPTION	ECO	BY	C'H'K.
W	2019-05-14 01:00:00 EDT	ADDED CAT. YA29LNT12 & YA30LNT12	51401	YR	RB

REV: PEO200

DRAWING NO. 30003952	7			6			5			4			3			2			1								
	CATALOG NUMBER	FIG. NO.	CONDUCTOR		STUD HOLE SIZE	DIMENSIONS							DIELESS (# OF CRIMPS)	INSTALLATION TOOLING										WIRE STRIP LENGTH			
			AWG	MM ²		O.D.	B	C	D MIN.	K DIA.	L	N		T	MECHANICAL		HYDRAULIC								COLOR CODE	DIE INDEX	
														MD6, OUR840, MD7-34R	BCT500HS, Y500CTHS	Y35, Y39, Y750, PAT750	Y46 PAT46	Y45	Y48	Y60							
YA27LNT14	I	3/0 AWG	--	1/4"	.62 [16]	1.00 [25]	.76 [19]	.67 [17]	.27 [7]	2.10 [53]	.31 [8]	.13 [3]	Y644HS (1) Y81KFT(2) Y81KFTMBH (2) PAT81KFT-18V (2) PAT644 (1) PAT444 (1)	W27VT(2)	X27RT(3)	U27RT(1)	U27RT(1)	U27RT(1)	--	--	ORANGE	14	1-1/16"				
YA27LNT516	I			5/16"	.62 [16]	1.00 [25]	.60 [15]	.77 [20]	.33 [8]	2.17 [55]	.34 [9]	.12 [3]															
YA27LNT38	I			3/8"	.62 [16]	1.00 [25]	.73 [19]	1.14 [29]	.41 [10]	2.64 [67]	.41 [10]	.12 [3]															
YA28LNT14	I	4/0 AWG	--	1/4"	.69 [18]	.88 [22]	.76 [19]	1.07 [27]	.27 [7]	2.60 [66]	.31 [8]	.14 [4]		Y644HS (1) Y81KFT(2) Y81KFTMBH (2) PAT81KFT-18V (2) PAT644 (1) PAT444 (1)	W28VT(2)	X28RT(3)	U28RT(1)	U28RT(1)	U28RT(1)	C28R(1)	L28RT(1)	PURPLE	15	1-1/8"			
YA28LNT516	I			5/16"	.69 [18]	.88 [22]	.70 [18]	.77 [20]	.33 [8]	2.09 [53]	.34 [9]	.14 [4]															
YA28LNT38	I			3/8"	.69 [18]	.88 [22]	.76 [19]	1.14 [29]	.41 [10]	2.67 [68]	.41 [10]	.14 [4]															
YA29LNT516	I	250 kcmil	--	5/16"	.75 [19]	1.06 [27]	.76 [19]	.72 [18]	.33 [8]	2.48 [63]	.34 [9]	.16 [4]			Y644HS (1) Y81KFT(2) Y81KFTMBH (2) PAT81KFT-18V (2) PAT644 (1) PAT444 (1)	W29VT(2)	X29RT(4)	U29RT(1)	U29RT(1)	U29RT(1)	L29R(1)	L29RT(1)	YELLOW	16	1-1/8"		
YA29LNT38	I			3/8"	.75 [19]	1.06 [27]	.96 [24]	1.20 [30]	.41 [10]	2.96 [75]	.41 [10]	.16 [4]															
YA29LNT12	I			1/2"	.75 [19]	1.06 [27]	.96 [24]	1.20 [30]	.53 [13]	3.08 [78]	.53 [13]	.16 [4]															
YA30LNT14	I	300 kcmil	150	1/4"	.81 [21]	1.03 [26]	.83 [21]	.71 [18]	.27 [7]	2.26 [57]	.31 [8]	.16 [4]				Y644HS (1) Y81KFT(2) Y81KFTMBH (2) PAT81KFT-18V (2) PAT644 (1) PAT444 (1)	W30VT(4)	----	U30RT(2)	U30RT(2)	U30RT(2)	C30R(2)	L30RT(1)	WHITE	17	1-1/8"	
YA30LNT38	I			3/8"	.81 [21]	1.03 [26]	.96 [24]	1.20 [30]	.41 [10]	2.97 [75]	.41 [10]	.16 [4]															
YA30LNT12	I			1/2"	.81 [21]	1.03 [26]	.96 [24]	1.20 [30]	.53 [13]	3.09 [78]	.53 [13]	.16 [4]															
YA31LNT38	I	350 kcmil	185	3/8"	.88 [22]	1.06 [27]	.96 [24]	1.45 [37]	.41 [10]	3.31 [84]	.41 [10]	.18 [4]	Y644HS (1) Y81KFT(2) Y81KFTMBH (2) PAT81KFT-18V (2) PAT644 (1) PAT444 (1)				W31VT(4)	----	U31RT(2)	U31RT(2)	U31RT(2)	C31R(2)	L31RT(1)	RED	18	1-3/16"	
YA31LNT12	I			1/2"	.88 [22]	1.06 [27]	.88 [22]	1.14 [29]	.53 [13]	2.75 [70]	.53 [13]	.18 [4]															
YA32LNT38	I	400 kcmil	--	3/8"	.95 [24]	1.19 [30]	.96 [24]	1.20 [30]	.41 [10]	3.21 [82]	.41 [10]	.20 [5]					Y644HS (1) Y81KFT(2) Y81KFTMBH (2) PAT81KFT-18V (2) PAT644 (1) PAT444 (1)	W32VT(4)	----	U32RT(2)	U32RT(2)	U32RT(2)	C32R(2)	L32RT(1)	BLUE	19 OR 470	1-1/4"
YA32LNT12	I			1/2"	.95 [24]	1.19 [30]	.96 [24]	1.20 [30]	.53 [13]	3.21 [82]	.53 [13]	.19 [5]															
YA34LNT38	I	500 kcmil	240	3/8"	1.06 [27]	1.27 [32]	.96 [24]	1.45 [37]	.41 [10]	3.65 [93]	.41 [10]	.23 [6]		Y644HS (1) Y81KFT(2) Y81KFTMBH (2) PAT81KFT-18V (2) PAT644 (1) PAT444 (1)				W34VT(4)	----	U34RT(2)	U34RT(2)	U34RT(2)	C34R(1)	L34RT(1)	BROWN	20 OR 299	1-7/16"
YA34LNT12	I			1/2"	1.06 [27]	1.27 [32]	.96 [24]	1.45 [37]	.53 [13]	3.65 [93]	.53 [13]	.23 [6]															
YA36LNT38	I	600 kcmil	300	3/8"	1.18 [30]	1.38 [35]	1.12 [28]	1.70 [43]	.41 [10]	4.09 [104]	.50 [13]	.27 [7]			Y644HS (1) Y81KFT(2) Y81KFTMBH (2) PAT81KFT-18V (2) PAT644 (1) PAT444 (1)			----	----	U36RT(2)	U36RT(2)	U36RT(2)	C36R(1)	L36RT(1)	GREEN	22	1-3/4"
YA36LNT12	I			1/2"	1.188 [30]	1.38 [35]	1.00 [25]	1.17 [30]	.53 [13]	3.29 [84]	.53 [13]	.27 [7]															
YA39LNT38	I	750 kcmil	--	3/8"	1.300 [33]	1.42 [36]	1.12 [28]	1.70 [43]	.41 [10]	4.24 [108]	.50 [13]	.27 [7]						Y644HS (1) Y81KFT(2) Y81KFTMBH (2) PAT81KFT-18V (2) PAT644 (1) PAT444 (1)	----	----	U39RT(2)	U39RT(2)	U39RT(2)	C39R(1)	L39RT(1)	BLACK	24
YA39LNT12	I			1/2"	1.300 [33]	1.42 [36]	1.63 [41]	1.70 [43]	.56 [14]	4.24 [108]	.53 [13]	.27 [7]															
YA39LNT58	I			5/8"	1.300 [33]	1.42 [36]	1.30 [33]	1.43 [36]	.69 [10]	3.67 [93]	.66 [17]	.27 [7]															

TOLERANCE BLOCK							
CONNECTOR SIZE	TOLERANCES						
	B	C	E	K DIA.	L	N	O.D.
-8C THRU -25	±.06	±.04	±.02	±.02	±.09	±.03	±.01
-26 THRU -34	±.08	±.04	±.02	±.02	±.12	±.03	±.01
-35 AND UP	±.09	±.06	±.02	±.02	±.15	±.06	±.01



- NOTES:
- MATERIAL: COPPER TUBING.
 - FINISH: TIN PLATED.
 - CAT NO. PUADP-1 ADAPTOR IS REQUIRED TO USE "U" DIES IN Y46 SERIES TOOLS.
 - DIMENSIONS IN BRACKETS [] ARE IN MILLIMETERS ROUNDED OFF TO THE NEAREST MILLIMETER, UNLESS OTHERWISE NOTED, AND ARE FOR REFERENCE ONLY.
 - CAT. NO. PT6515 ADAPTER IS REQUIRED TO USE "U" TYPE DIES IN Y45 TOOLS.

TO ORDER BURNDY® PRODUCTS CALL
 UNITED STATES
 1-800-346-4175 (LONDONDERRY, NH)
 CANADA:
 1-800-361-6975 (QUEBEC)
 1-800-387-6487 (ALL OTHER PROVINCES)
 FOR PRODUCT INFO: <http://www.burndy.com>

HYLUG™ COPPER (NARROW TONGUE)

ITEM NO: N/A
 CAT. NO: YA-L-NT-(TABLE)
 DRAWN BY: AUGUSTIN.S 07/03/10
 CHECKER: --
 DSN APPVL: J MICHAUD 06/11/11
 MFG APPVL: T THRELFALL 06/23/11
 QA APPVL: T WATTS 06/13/11
 MKT APPVL: J SYLVIA 06/13/11

SCALE: 1:1

PROD FAM: CM&R COMPRESSION
 PROJECT #: --
 DOCUMENT TYPE: Sales
 REL LEVEL: Released

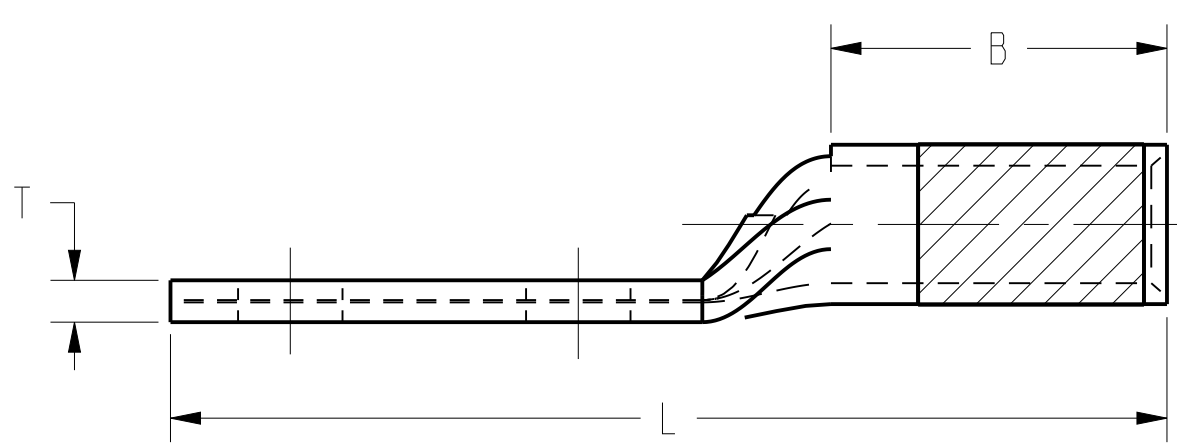
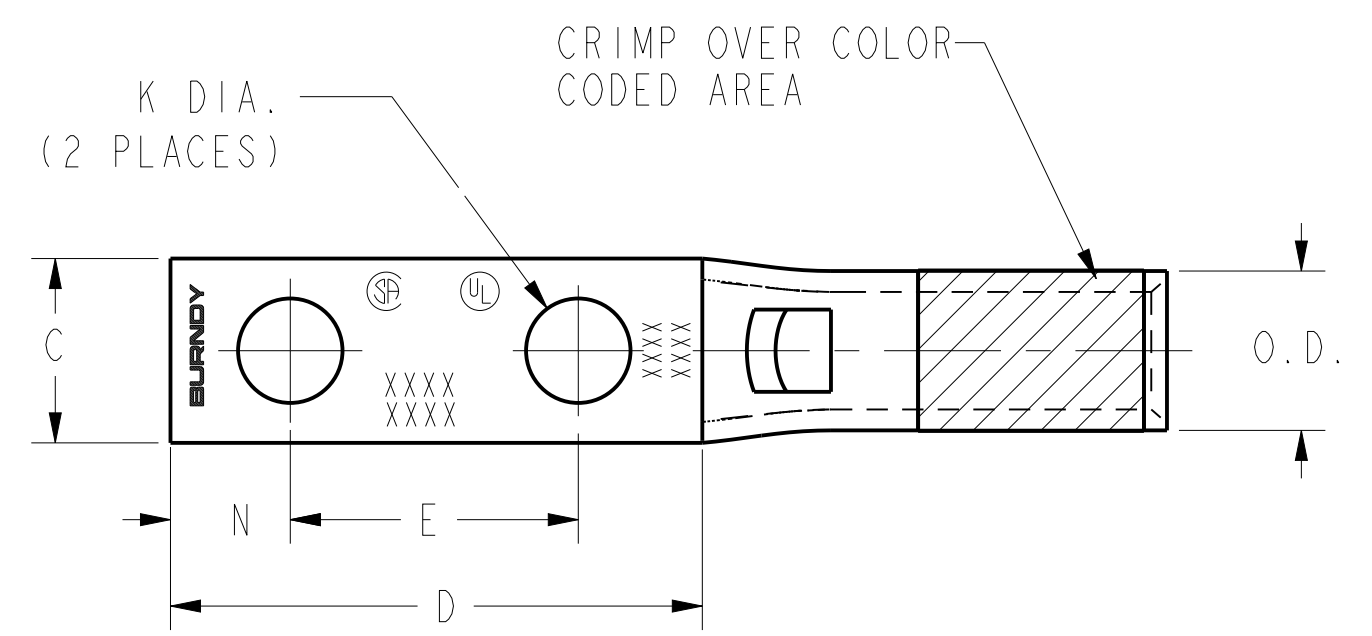
DRAWING NO: 30003952
 SHEET 2 OF 12

REV: PFC200

REV	DATE	DESCRIPTION	ECO	BY	C'H'K.
W	2019-05-14 01:00:00 EDT	ADDED CAT. YA29LNT12 & YA30LNT12	51401	YR	RB

CATALOG NUMBER	FIG. NO.	CONDUCTOR		STUD HOLE SIZE	DIMENSIONS									DIELESS (# OF CRIMPS)	INSTALLATION TOOLING								WIRE STRIP LENGTH			
		AWG	MM ²		O.D.	B	C	D MIN.	E	K DIA.	L	N	T		MECHANICAL		HYDRAULIC									
															MD6, OUR840, MD7-34R	BCT500HS, Y500CTHS	Y35, Y39, Y750, PAT750	Y46 PAT46	Y45	Y48	Y60	COLOR CODE		DIE INDEX		
YA2CL2NT14	2	#2 AWG	35	1/4"	.42 [11]	.88 [22]	.48 [12]	1.26 [32]	.63 [16]	.27 [7]	2.47 [63]	.31 [8]	.11 [3]	Y122CMR (2) MRC840(1) MY29-3(1) MY29-11(1) Y644HS(1) YIMRTC(2) Y81KFT(1) Y81KFTMBH(1) PAT81KFT-18V(1) PAT644 (1) PAT444 (1)	W2CVT(1)	W2CVT(1)	U2CRT(1)	U2CRT(1)	U2CRT(1)	--	--	BROWN	10	15/16"		
YA2CL2NT14E2	2			1/4"	.42 [11]	.88 [22]	.48 [12]	1.39 [35]	.75 [19]	.27 [7]	2.60 [66]	.31 [8]	.11 [3]													
YA2CL2NT14E1	2			1/4"	.42 [11]	.88 [22]	.48 [12]	1.64 [42]	1.00 [25]	.27 [7]	2.84 [72]	.31 [8]	.11 [3]													
YA1CL2NT14	2	#1 AWG	50	1/4"	.46 [12]	.88 [22]	.50 [13]	1.26 [32]	.63 [16]	.27 [7]	2.55 [65]	.31 [8]	.11 [3]	MRC840(1) MY29-3(1) MY29-11(1) YIMRTC(2) Y644HS(1) Y81KFT(1) PAT444 (1) PAT81KFT-18V(1)	W1CVT(1)	X1CRT-1(1)	U1CRT-1 (1)	U1CRT-1 (1)	U1CRT-1 (1)	--	--	GREEN	11	15/16"		
YA1CL2NT14E2	2			1/4"	.46 [12]	.88 [22]	.50 [13]	1.39 [35]	.75 [19]	.27 [7]	2.68 [68]	.31 [8]	.10 [3]													
YA25L2NT14	2	1/0 AWG	--	1/4"	.51 [13]	.88 [22]	.48 [12]	1.30 [33]	.63 [16]	.27 [7]	2.56 [65]	.31 [8]	.10 [3]	MRC840(2) MY29-3(1) MY29-11(1) Y644HS(1) Y81KFT(1) PAT444 (1) PAT81KFT-18V(1)	W25VT(2)	W25VT(2)	U25RT(1)	U25RT(1)	U25RT(1)	--	--	PINK	12	15/16"		
YA25L2NT14E1	2			1/4"	.51 [13]	.88 [22]	.48 [12]	1.94 [49]	1.00 [25]	.27 [7]	3.28 [83]	.25 [6]	.12 [3]													
YA26L2NT14	2	2/0 AWG	70	1/4"	.56 [14]	.94 [24]	.48 [12]	1.22 [31]	.63 [16]	.27 [7]	2.66 [68]	.25 [6]	.12 [3]	MRC840(2) MY29-3(1) MY29-11(1) Y644HS(1) Y81KFT(1) PAT444 (1) PAT81KFT-18V(1)	W26VT(1)	W26VT(2) X26RT(2)	U26RT(1)	U26RT(1)	U26RT(1)	--	--	BLACK	13	1"		
YA26L2NT14E1	2			1/4"	.56 [14]	.94 [24]	.48 [12]	1.60 [41]	1.00 [25]	.27 [7]	3.03 [77]	.25 [6]	.12 [3]													

TOLERANCE BLOCK							
CONNECTOR SIZE	TOLERANCES						
	B	C	E	K DIA.	L	N	O.D.
-8C THRU -25	±.06	±.04	±.02	±.02	±.09	±.03	±.01
-26 THRU -34	±.08	±.04	±.02	±.02	±.12	±.03	±.01
-35 AND UP	±.09	±.06	±.02	±.02	±.15	±.06	±.01



- NOTES:
- MATERIAL: COPPER TUBING.
 - FINISH: TIN PLATED.
 - CAT NO. PUADP-1 ADAPTOR IS REQUIRED TO USE "U" DIES IN Y46 SERIES TOOLS.
 - DIMENSIONS IN BRACKETS [] ARE IN MILLIMETERS ROUNDED OFF TO THE NEAREST MILLIMETER, UNLESS OTHERWISE NOTED, AND ARE FOR REFERENCE ONLY.
 - CAT. NO. PT6515 ADAPTER IS REQUIRED TO USE "U" TYPE DIES IN Y45 TOOLS.

TO ORDER BURNDY® PRODUCTS CALL
 UNITED STATES
 1-800-346-4175 (LONDONDERRY, NH)
 CANADA:
 1-800-361-6975 (QUEBEC)
 1-800-387-6487 (ALL OTHER PROVINCES)
 FOR PRODUCT INFO: <http://www.burndy.com>

HYLUG™ COPPER (NARROW TONGUE)	
ITEM NO:	N/A
CAT. NO:	YA-L-NT-(TABLE)
DRAWN BY:	AUGUSTIN.S 07/03/10
CHECKER:	--
DSN APPVL:	J MICHAUD 06/11/11
MFG APPVL:	T THRELFALL 06/23/11
QA APPVL:	T WATTS 06/13/11
MKT APPVL:	J SYLVIA 06/13/11
PROD FAM:	CM&R COMPRESSION
DRAWING NO:	30003952
PROJECT #:	--
DOCUMENT TYPE:	Sales
REL LEVEL:	Released
SCALE:	1:1
REV	W

REV	DATE	DESCRIPTION	ECO	BY	C'H'K.
W	2019-05-14 01:00:00 EDT	ADDED CAT. YA29LNT12 & YA30LNT12	51401	YR	RB

REV: PEO200

DRAWING NO. 30003952	7	6	5	4	3	2	1	CONDUCTOR													INSTALLATION TOOLING										WIRE STRIP LENGTH	
								CATALOG NUMBER	FIG. NO.	CONDUCTOR		STUD HOLE SIZE	DIMENSIONS								DIELESS (# OF CRIMPS)	MECHANICAL		HYDRAULIC						COLOR CODE		DIE INDEX
										AWG	MM ²		O.D.	B	C	D MIN.	E	K DIA.	L	N		T	MD6, OUR840, MD7-34R	BCT500HS, Y500CTS	Y35, Y39, Y750, PAT750	Y46 PAT46 \triangleleft 3	Y45 \triangleleft 5	Y48	Y60			
YA27L2NT14	2	3/0 AWG	--	1/4"	.62 [16]	1.00 [25]	.76 [19]	1.30 [33]	.63 [16]	.27 [7]	2.73 [69]	.31 [8]	.13 [3]	MY29-3(1) MY29-11(1) MRC840(2) Y644HS(1) Y81KFT(1) Y81KFTMBH(1) PAT81KFT-18V(1) PAT644 (1) PAT444 (1)	W27VT(2) W27RT(2) X27RT(3)	W27VT(2) W27RT(2) X27RT(3)	U27RT(1)	U27RT(1)	U27RT(1)	--	--	ORANGE	14	1-1/16"								
YA27L2NT38	2			3/8"	.62 [16]	1.00 [25]	.60 [15]	1.74 [44]	1.00 [25]	.41 [10]	3.30 [84]	.41 [10]	.13 [3]																			
YA27L2NT516	2			5/16"	.62 [16]	1.00 [25]	.60 [15]	1.73 [44]	1.00 [25]	.33 [8]	3.26 [83]	.31 [8]	.13 [3]																			
YA28L2NT14	2	4/0 AWG	--	1/4"	.69 [18]	.88 [22]	.76 [19]	1.30 [33]	.63 [16]	.27 [7]	2.65 [67]	.31 [8]	.13 [3]	MY29-3(1) MY29-11(1) Y644HS(1) Y81KFT(1) PAT444 (1) PAT81KFT-18V(1)	W27RT(2)	W28RT(2) X28RT(3)	U28RT(1)	U28RT(1)	U28RT(1)	C28R(1)	L28RT(1)	PURPLE	15	1-1/16"								
YA29L2NT38	2	250 kcmil	--	3/8"	.75 [19]	1.00 [25]	.80 [20]	1.83 [47]	1.00 [25]	.41 [10]	3.43 [87]	.41 [10]	.16 [4]																			
YA29L2NT38E16	2			3/8"	.75 [19]	1.06 [27]	.80 [20]	1.83 [47]	1.75 [44]	.41 [10]	4.18 [106]	.41 [10]	.16 [4]																			
YA31L2NT38	2	350 kcmil	185	3/8"	.88 [22]	1.06 [27]	.96 [24]	1.82 [46]	1.00 [25]	.41 [10]	3.51 [89]	.41 [10]	.18 [4]	Y644HS(1) Y81KFT(1) Y81KFTMBH(1) PAT81KFT-18V(1) PAT644 (1) PAT444 (1)	W31VT(2)	W31VT(2) W31RT(2)	U31RT(2) U29ART(2)	U31RT(2) U29ART(2)	U31RT(2) U29ART(2)	C31R(2) C29AR(2)	L31RT(1) L29ART(1)	RED	18	1-1/8"								
YA31L2NT38E16	2			3/8"	.88 [22]	1.06 [27]	.88 [22]	2.59 [66]	1.75 [44]	.41 [10]	4.36 [111]	.41 [10]	.18 [4]																			
YA34L2NT38	2	500 kcmil	240	3/8"	1.06 [27]	1.27 [32]	.96 [24]	1.82 [46]	1.00 [25]	.41 [10]	3.65 [93]	.41 [10]	.23 [6]																			
YA34L2NT38E16	2			3/8"	1.06 [27]	1.27 [32]	.96 [24]	2.58 [66]	1.75 [44]	.41 [10]	4.63 [117]	.41 [10]	.23 [6]																			
YA34L2NT12E1	2			1/2"	1.06 [27]	1.27 [32]	.96 [24]	2.08 [53]	1.00 [25]	.53 [13]	4.13 [105]	.53 [13]	.23 [6]																			
YA36L2NNT	2	600 kcmil	300	1/2"	1.19 [30]	1.38 [35]	1.12 [28]	3.00 [76]	1.75 [44]	.53 [13]	5.43 [138]	.63 [16]	.27 [16]	---	---	U36RT(2)	U36RT(2)	U36RT(2)	C36R(1)	L36RT(1)	GREEN	472	1-3/4"									
YA39L2NT38	2	750 kcmil	--	3/8"	1.30 [33]	1.42 [36]	1.63 [41]	2.06 [52]	1.00 [25]	.41 [10]	4.34 [110]	.50 [13]	.27 [16]																			
YA39L2NT38E16	2			3/8"	1.30 [33]	1.42 [36]	1.30 [33]	2.78 [71]	1.75 [44]	.41 [10]	5.11 [130]	.50 [13]	.27 [16]																			
YA39L2NT12E1	2			1/2"	1.30 [33]	1.42 [36]	1.30 [33]	2.08 [53]	1.00 [25]	.53 [13]	4.42 [112]	.53 [13]	.27 [16]																			

TOLERANCE BLOCK							
CONNECTOR SIZE	TOLERANCES						
	B	C	E	K DIA.	L	N	O.D.
-8C THRU -25	±.06	±.04	±.02	±.02	±.09	±.03	±.01
-26 THRU -34	±.08	±.04	±.02	±.02	±.12	±.03	±.01
-35 AND UP	±.09	±.06	±.02	±.02	±.15	±.06	±.01

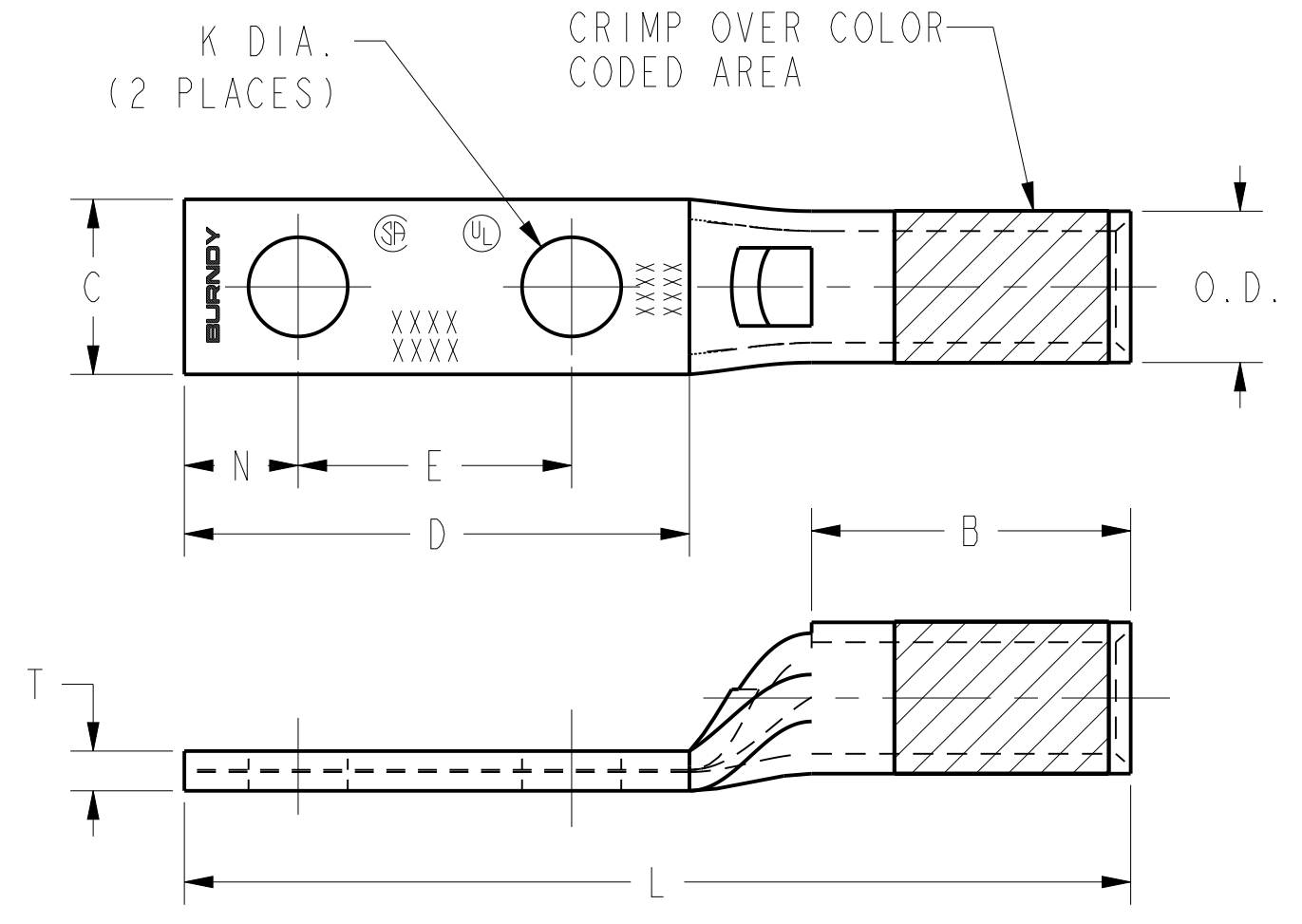


FIG. 2

- NOTES:
- MATERIAL: COPPER TUBING.
 - FINISH: TIN PLATED.
 - CAT NO. PUADP-1 ADAPTOR IS REQUIRED TO USE "U" DIES IN Y46 SERIES TOOLS.
 - DIMENSIONS IN BRACKETS [] ARE IN MILLIMETERS ROUNDED OFF TO THE NEAREST MILLIMETER, UNLESS OTHERWISE NOTED, AND ARE FOR REFERENCE ONLY.
 - CAT. NO. PT6515 ADAPTER IS REQUIRED TO USE "U" TYPE DIES IN Y45 TOOLS.

TO ORDER BURNDY® PRODUCTS CALL		HYLUG™ COPPER (NARROW TONGUE)	
UNITED STATES 1-800-346-4175 (LONDONDERRY, NH)		ITEM NO: N/A	
CANADA: 1-800-361-6975 (QUEBEC) 1-800-387-6487 (ALL OTHER PROVINCES)		CAT. NO: YA-L-NT-(TABLE)	
FOR PRODUCT INFO: http://www.burndy.com		DRAWN BY: AUGUSTIN.S 07/03/10	
		CHECKER: --	
		DSN APPVL: J MICHAUD 06/11/11	
		MFG APPVL: T THRELFALL 06/23/11	
		QA APPVL: T WATTS 06/13/11	
		MKT APPVL: J SYLVIA 06/13/11	
		SCALE: 3:1	
		PROD FAM: CM&R COMPRESSION	
		DRAWING NO	
		PROJECT #: --	
		SIZE	
		30003952	
		DOCUMENT TYPE: Sales	
		SHEET 4 OF 12	
		REL LEVEL: Released	

REV	DATE	DESCRIPTION	ECO	BY	C'K
W	2019-05-14 01:00:00 EDT	ADDED CAT. YA29LNT12 & YA30LNT12	51401	YR	RB

REV: PEO200

DRAWING NO. 30003952	7		6		5		4		3		2		1										
	CATALOG NUMBER	FIG. NO.	CONDUCTOR		STUD HOLE SIZE	DIMENSIONS						DIELESS (# OF CRIMPS)	INSTALLATION TOOLING								WIRE STRIP LENGTH		
			AWG	MM ²		O.D.	B	C	D MIN.	K DIA.	L		N	T	MECHANICAL		HYDRAULIC						
												MD6, OUR840, MD7-34R	BCT500HS, Y500CTHS	Y35, Y39, Y750, PAT750	Y46 PAT46	Y45	Y48	Y60	COLOR CODE	DIE INDEX			
YAV4CLNT10FX	3	4 AWG CLASS B,C FLEX CLASS G,H,I,K,M DLO 105/24	---	#10	.38 [10]	.50 [13]	.41 [10]	.52 [13]	.21 [5]	1.32 [34]	.25 [6]	.09 [2]	MY29-11(1) Y1MRTC(2) Y81KFT(1) Y122CMR (2) PAT81KFT-18V(1)	W4CRT(1) X4CRT(1) W4CVT(1)	W4CRT(1) W4CVT(1) X4CRT(1)	U4CRT(1)	U4CRT(1)	U4CRT(1)	--	--	GRAY	8	1/2"
YAV2CLNT14FX	3	2 AWG CLASS B,C FLEX CLASS G,H,I,K,M DLO 150/24	35	1/4"	.46 [12]	.63 [16]	.46 [12]	.64 [16]	.27 [7]	1.71 [43]	.31 [8]	.10 [3]	Y1MRTC(2) MY29-11(1) Y81KFT(1) Y644(1) Y444(1)	W2CVT(1) W2CRT(1) X2CRT(1)	W2CVT(1) W2CRT(1) X2CRT(1)	U2CRT(1)	U2CRT(1)	U2CRT(1)	--	--	BROWN	10	11/16"
YAV2CLNT516FX	3			5/16"	.46 [12]	.63 [16]	.44 [11]	.70 [18]	.33 [8]	1.78 [45]	.34 [9]	.10 [3]											
YAV25LNT14FX	3	1/0 AWG CLASS B,C FLEX CLASS G,H,I,K,M DLO 275/24	50	1/4"	.56 [14]	.69 [18]	.67 [17]	.64 [16]	.27 [7]	1.75 [44]	.31 [8]	.12 [3]											
YAV25LNT516FX	3			5/16"	.56 [14]	.69 [18]	.67 [17]	.70 [18]	.33 [8]	1.81 [46]	.34 [9]	.12 [3]											
YAV25LNT38FX	3			3/8"	.56 [14]	.69 [18]	.76 [19]	.83 [21]	.41 [10]	1.94 [49]	.41 [10]	.13 [3]											
YAV26LNT516FX	3	2/0 AWG CLASS B,C FLEX CLASS G,H,I,K,M DLO 325/24	70	5/16"	.63 [16]	.81 [21]	.87 [22]	.70 [18]	.33 [8]	1.98 [50]	.34 [9]	.13 [3]											
YAV26LNT38FX	3			3/8"	.63 [16]	.81 [21]	.87 [22]	.83 [21]	.41 [10]	2.11 [54]	.41 [10]	.13 [3]	MY29-11(1) Y81KFT(1) PAT81KFT(1) Y644(1) PAY644(1) Y444(1) PAT444(1)	W26VT(2) W26RT(2) X26RT(2)	W26VT(2) W26RT(2) X26RT(2)	U26RT(1)	U26RT(1)	U26RT(1)	--	--	BLACK	13	13/16"
YAV26LNT12FX	3			1/2"	.63 [16]	.81 [21]	.87 [22]	1.08 [27]	.53 [13]	2.36 [60]	.53 [13]	.13 [3]											
YAV28LNT516FX	3	4/0 AWG CLASS B,C FLEX CLASS G,H,I,K,M DLO 550/24	---	5/16"	.77 [20]	1.03 [26]	.94 [24]	.70 [18]	.33 [8]	2.29 [58]	.34 [9]	.15 [4]											
YAV28LNT38FX	3			3/8"	.77 [20]	1.03 [26]	.94 [24]	.83 [21]	.41 [10]	2.42 [61]	.41 [10]	.15 [4]											
YAV28LNT12FX	3			1/2"	.77 [20]	1.03 [26]	.76 [19]	1.08 [27]	.53 [13]	2.67 [68]	.53 [13]	.15 [4]											
YAV28LNT14FX	3			1/4"	.77 [20]	1.03 [26]	.76 [19]	.62 [16]	.27 [7]	2.23 [56]	.31 [8]												
YA30LNT516FX	3	250 FLEX CLASS G: 259 STR CLASS H: 427 STR 4/0 FLEX CLASS I, 532 STR CLASS K, 2107 STR CLASS M, 5320 STR DLD, 550/24	---	5/16"	.81 [21]	1.03 [26]	.96 [24]	.72 [18]	.33 [8]	2.49 [63]	.34 [9]	.16 [4]	Y81KFT(1) PAT81KFT(1) Y644(1) PAY644(1) Y444(1) PAT444(1)	W29VT(2)	W29VT(1)	U29RT(1)	U29RT(1)	U29RT(1)	--	--	YELLOW	16	1-1/8"
YA30LNT38FX	3			3/8"				1.20 [30]	.41 [10]	2.97 [75]	.41 [10]												
YA31LNT12FX	3	250 FLEX DLO 650/24 CLASS I,K,M	150	1/2"	.88 [22]	1.06 [27]	.96 [24]	1.20 [30]	.53 [13]	2.75 [70]	.53 [13]	.18 [4]		W30VT(2)	W30VT(2) W30RT(2)	U30RT(2)	U30RT(2)	U30RT(2)	C30R(1)	L30RT(1)	WHITE	17	1-1/8"

TOLERANCE BLOCK							
CONNECTOR SIZE	TOLERANCES						
	B	C	E	K DIA.	L	N	O.D.
-8C THRU -25	±.06	±.04	±.02	±.02	±.09	±.03	±.01
-26 THRU -34	±.08	±.04	±.02	±.02	±.12	±.03	±.01
-35 AND UP	±.09	±.06	±.02	±.02	±.15	±.06	±.01

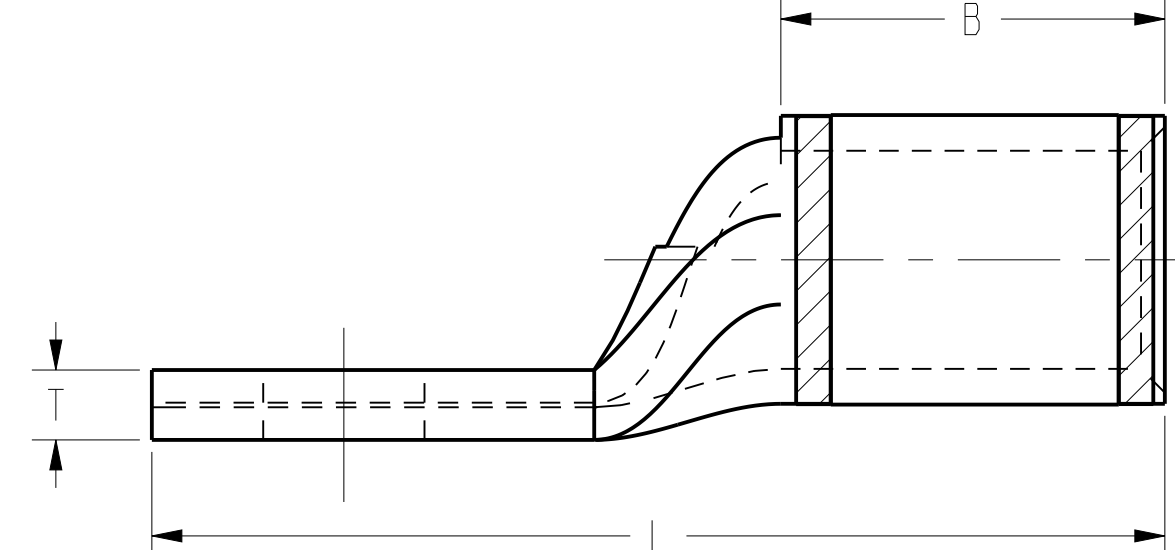
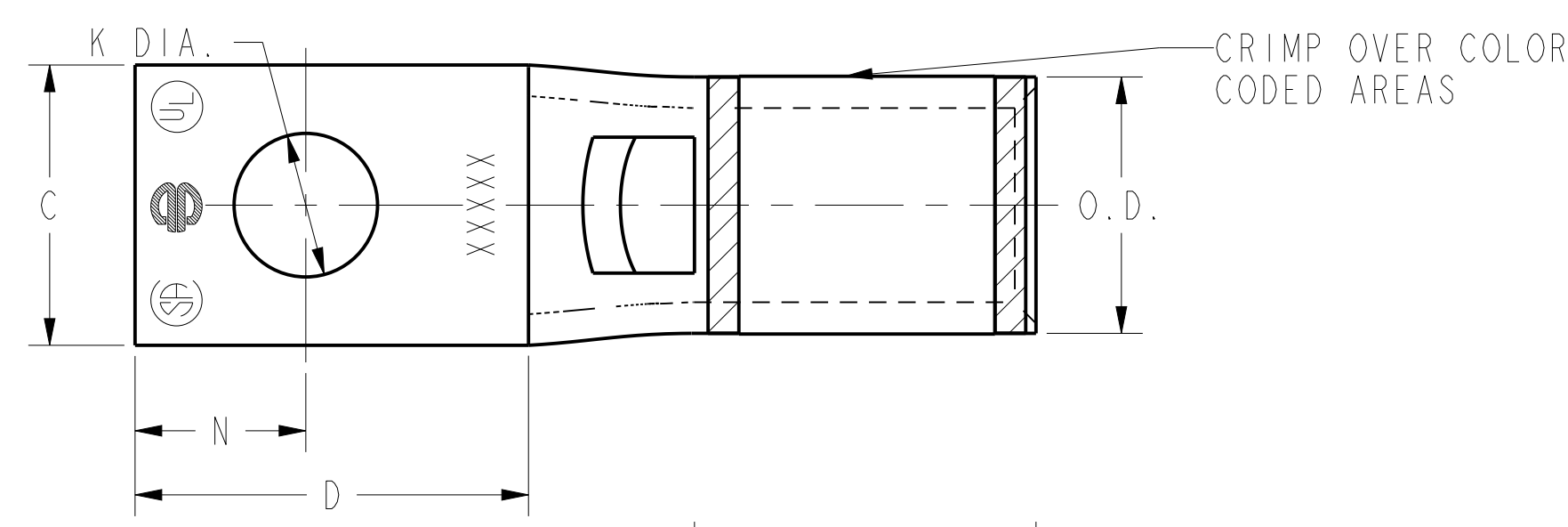


FIG. 3

REV	DATE	DESCRIPTION	ECO	BY	C'H'K.
W	2019-05-14 01:00:00 EDT	ADDED CAT. YA29LNT12 & YA30LNT12	51401	YR	RB

- NOTES:
- MATERIAL: COPPER TUBING.
 - FINISH: TIN PLATED.
 - CAT NO. PUADP-1 ADAPTOR IS REQUIRED TO USE "U" DIES IN Y46 SERIES TOOLS.
 - DIMENSIONS IN BRACKETS [] ARE IN MILLIMETERS ROUNDED OFF TO THE NEAREST MILLIMETER, UNLESS OTHERWISE NOTED, AND ARE FOR REFERENCE ONLY.
 - CAT. NO. PT6515 ADAPTER IS REQUIRED TO USE "U" TYPE DIES IN Y45 TOOLS.
 - THE YA30LNT516FX IS NOT UL/CSA LISTED USING ANY CLASS OF 4/0 FLEX COPPER CONDUCTOR.

TO ORDER BURNDY® PRODUCTS CALL
 UNITED STATES
 1-800-346-4175 (LONDONDERRY, NH)
 CANADA:
 1-800-361-6975 (QUEBEC)
 1-800-387-6487 (ALL OTHER PROVINCES)
 FOR PRODUCT INFO: <http://www.burndy.com>

HYLUG™ COPPER (NARROW TONGUE)

ITEM NO:	N/A
CAT. NO:	YA-L-NT-(TABLE)
DRAWN BY:	AUGUSTIN.S 07/03/10
CHECKER:	--
DSN APPVL:	J MICHAUD 06/11/11
MFG APPVL:	T THRELFALL 06/23/11
QA APPVL:	T WATTS 06/13/11
MKT APPVL:	J SYLVIA 06/13/11
PROD FAM:	CM&R COMPRESSION
DRAWING NO:	30003952
PROJECT #:	--
DOCUMENT TYPE:	Sales
REL LEVEL:	Released

BURNDY

SCALE: 3:1

SHEET 5 OF 12

REV: PE0200

DRAWING NO. 30003952	7		6				5			4		3			2		1						
	CATALOG NUMBER	FIG. NO.	CONDUCTOR		STUD HOLE SIZE	DIMENSIONS							DIELESS (# OF CRIMPS)	INSTALLATION TOOLING									WIRE STRIP LENGTH
			AWG	MM ²		O.D.	B	C	D MIN.	K DIA.	L	N		T	MECHANICAL			HYDRAULIC					
												MD6, OUR840, MD7-34R	BCT500HS, Y500CTHS	Y35, Y39, Y750, PAT750	Y46 PAT46	Y45	Y48	Y60	COLOR CODE	DIE INDEX			
YA32LNT516FX	3	313.1 kcmil 775/24 300 FLEX	185	5/16"	.95 [24]	1.19 [30]	.96 [24]	.70 [18]	.33 [8]	2.65 [65]	.34 [9]	.19 [5]	Y644HS(1) Y81KFT(1) Y81KFTMBH(1) PAT81KFT-18V(1) PAT644 (1) PAT444 (1)	W31VT(2)	W31VT(2) W31RT(2)	U31RT(2)	U31RT(2)	U31RT(2)	C31R(1)	L31RT(1)	RED	18	1-1/4"
YA32LNT38FX	3			3/8"	.95 [24]	1.19 [30]	.96 [24]	.83 [21]	.41 [10]	2.68 [68]	.41 [10]	.19 [5]											
YA32LNT12FX	3			1/2"	.95 [24]	1.19 [30]	.96 [24]	1.05 [27]	.52 [13]	2.93 [74]	.53 [13]	.19 [5]											
YA34LNT38FX	3	373.7 kcmil 925/24 350 FLEX	240	3/8"	1.06 [27]	1.27 [32]	.96 [24]	.85 [22]	.41 [10]	2.87 [73]	.41 [10]	.23 [6]	Y644HS(1) Y81KFT(1) Y81KFTMBH(1) PAT81KFT-18V(1) PAT644 (1) PAT444 (1)	W32VT(2)	W32VT(2) W32RT(2)	U32RT(2)	U32RT(2)	U32RT(2)	C32R(2)	L32RT(1)	BLUE	19	1-5/16"
YA34LNT12FX	3			1/2"	1.06 [27]	1.27 [32]	.96 [24]	1.10 [28]	.53 [13]	3.12 [79]	.53 [13]	.23 [6]											
YA38LNT12FX	3	535.3 kcmil 1325/24 500 FLEX	300	1/2"	1.25 [32]	1.45 [37]	1.63 [41]	1.08 [27]	.53 [13]	3.41 [87]	.53 [13]	.27 [7]	Y644HS(1) Y81KFT(1) Y81KFTMBH(1) PAT81KFT-18V(1) PAT644 (1) PAT444 (1)	---	---	U38XRT(2)	U38XRT(2)	U38XRT(2)	---	L38RT(1)	PINK	L99	1-7/16"
YA38LNTM20FX	3			M20	1.25 [32]	1.45 [37]	1.63 [41]	1.51 [38]	.85 [22]	3.84 [98]	.75 [19]	.27 [7]											
YA44LNT38FX	3	777.7 kcmil 1925/24 750 FLEX	500	3/8"	1.50 [38]	1.65 [42]	1.50 [38]	1.20 [30]	.41 [10]	3.79 [96]	.53 [13]	.33 [8]	Y644HS(1) Y81KFT(2) Y81KFTMBH(2) PAT81KFT-18V(2) PAT644 (1) PAT444 (1)	---	---	U44ZRT(2)	U44ZRT(2)	U44ZRT(2)	C44R(1)	L44RT(1)	YELLOW	L115	1-5/8"
YA44LNT12FX	3			1/2"	1.50 [38]	1.65 [42]	1.62 [41]	1.26 [32]	.56 [14]	3.98 [101]	.62 [16]	.33 [8]											
YA44LNT58FX	3			5/8"	1.50 [38]	1.65 [42]	1.50 [38]	1.30 [33]	.69 [18]	4.04 [103]	.66 [17]	.33 [8]											

TOLERANCE BLOCK							
CONNECTOR SIZE	TOLERANCES						
	B	C	E	K DIA.	L	N	O.D.
-8C THRU -25	±.06	±.04	±.02	±.02	±.09	±.03	±.01
-26 THRU -34	±.08	±.04	±.02	±.02	±.12	±.03	±.01
-35 AND UP	±.09	±.06	±.02	±.02	±.15	±.06	±.01

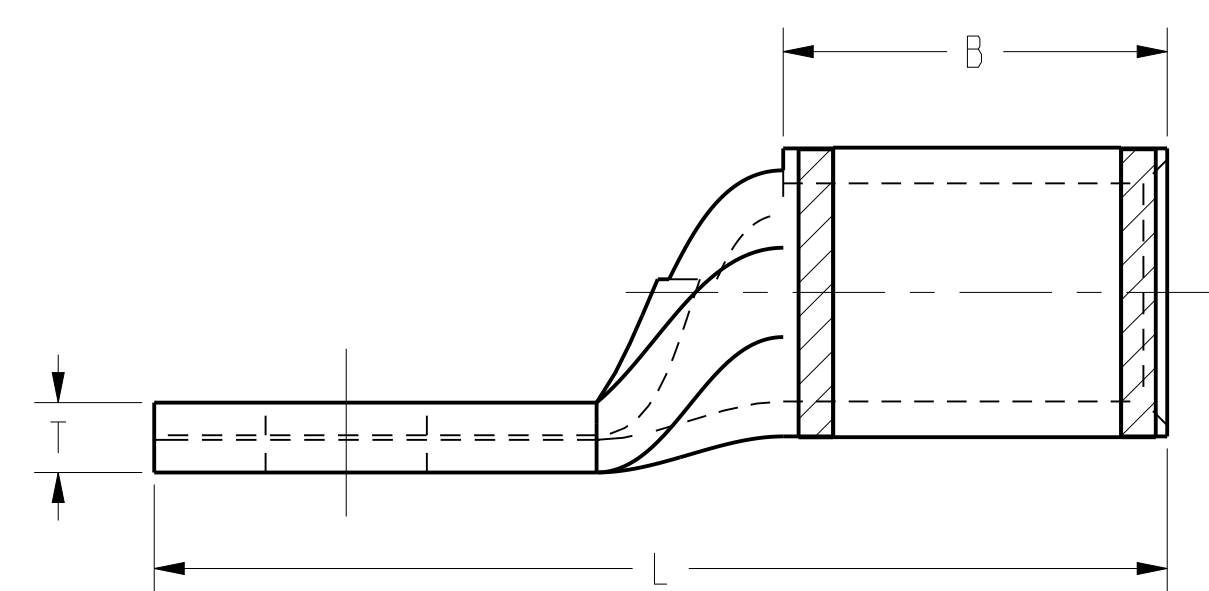
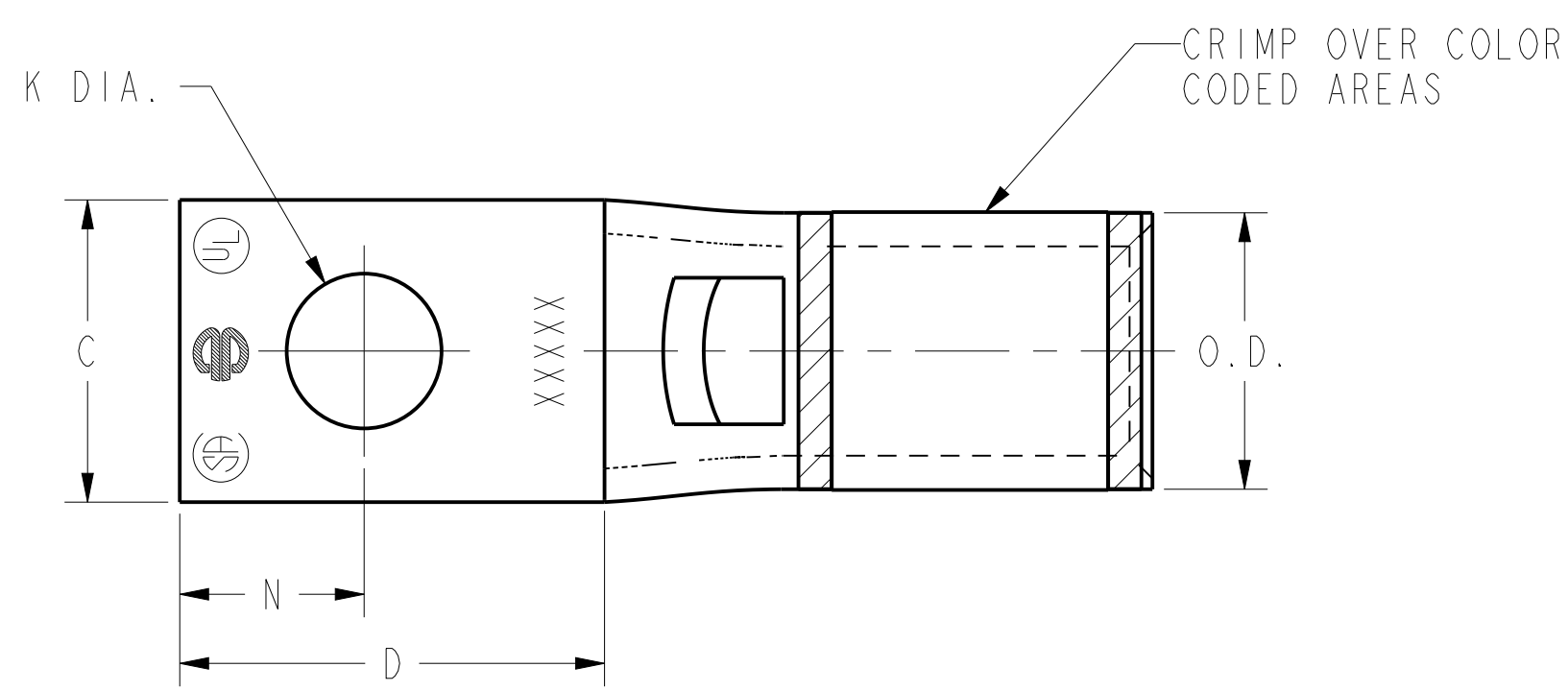


FIG. 3

- NOTES:
- MATERIAL: COPPER TUBING.
 - FINISH: TIN PLATED.
 - CAT NO. PUADP-1 ADAPTOR IS REQUIRED TO USE "U" DIES IN Y46 SERIES TOOLS.
 - DIMENSIONS IN BRACKETS [] ARE IN MILLIMETERS ROUNDED OFF TO THE NEAREST MILLIMETER, UNLESS OTHERWISE NOTED, AND ARE FOR REFERENCE ONLY.
 - CAT. NO. PT6515 ADAPTER IS REQUIRED TO USE "U" TYPE DIES IN Y45 TOOLS.

TO ORDER BURNDY® PRODUCTS CALL

UNITED STATES
1-800-346-4175 (LONDONDERRY, NH)

CANADA:
1-800-361-6975 (QUEBEC)
1-800-387-6487 (ALL OTHER PROVINCES)

FOR PRODUCT INFO: <http://www.burndy.com>

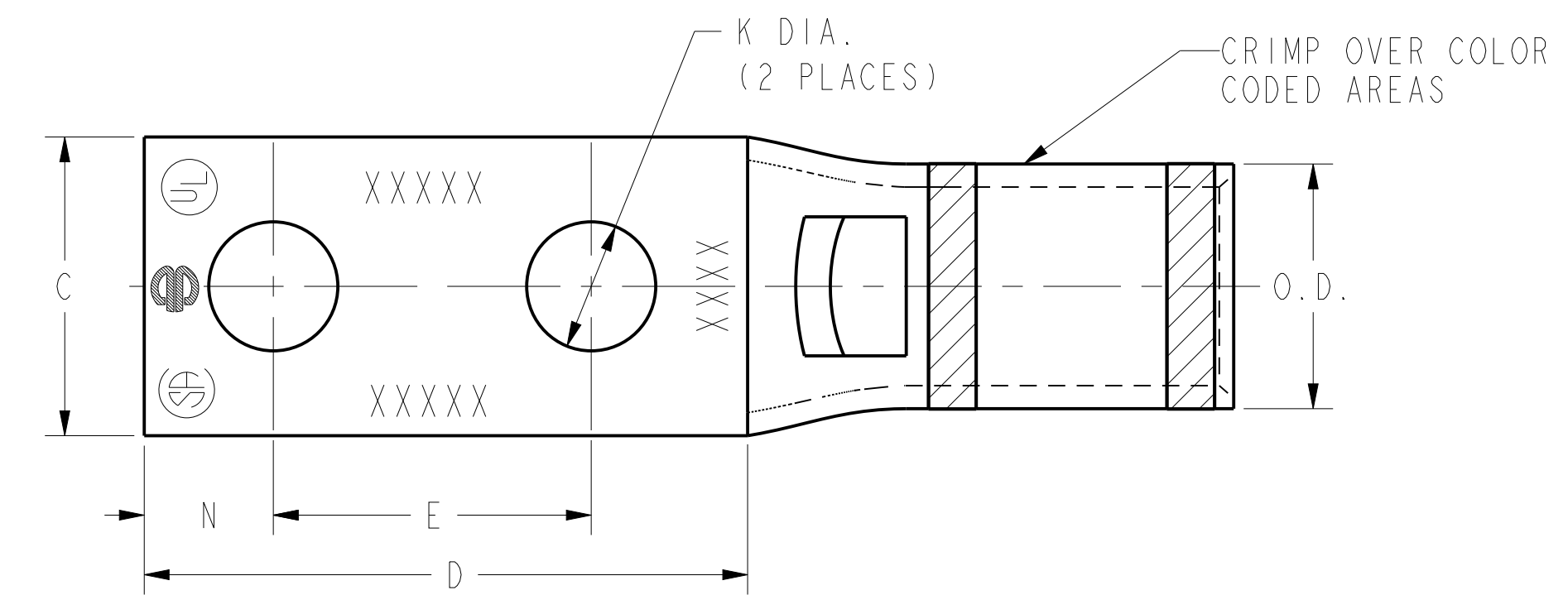
HYLUG™ COPPER (NARROW TONGUE)			
ITEM NO:	N/A		
CAT. NO:	YA-L-NT-(TABLE)		
DRAWN BY:	AUGUSTIN.S 07/03/10		
CHECKER:	--		
DSN APPVL:	J MICHAUD	06/11/11	BURNDY
MFG APPVL:	T THRELFALL	06/23/11	
QA APPVL:	T WATTS	06/13/11	
MKT APPVL:	J SYLVIA	06/13/11	
PROD FAM:	CM&R COMPRESSION	DRAWING NO	REV
PROJECT #:	--	SIZE	30003952
DOCUMENT TYPE:	Sales		W
REL LEVEL:	Released	D	SHEET 6 OF 12

REV	DATE	DESCRIPTION	ECO	BY	C'K
W	2019-05-14 01:00:00 EDT	ADDED CAT. YA29LNT12 & YA30LNT12	51401	YR	RB

REV: PEO200

DRAWING NO. 30003952	7	6	5	4	3	2	1	CATALOG NUMBER	FIG. NO.	CONDUCTOR		STUD HOLE SIZE	DIMENSIONS											INSTALLATION TOOLING										WIRE STRIP LENGTH
										AWG	MM ²		O.D.	B	C	D MIN.	E	K DIA.	L	N	T	DIELESS (# OF CRIMPS)	MECHANICAL		HYDRAULIC						COLOR CODE	DIE INDEX		
																							MD6, OUR840, MD7-34R	BCT500HS, Y500CTHS	Y35, Y39, Y750, PAT750	Y46 PAT46	Y45	Y48	Y60					
YAV29L2NT38FX	4	4/0 AWG 4/0 WELD 550/24	---	3/8"	.80 [20]	1.03 [26]	.94 [24]	1.84 [47]	1.00 [25]	.41 [10]	3.43 [87]	.41 [10]	.16 [4]	Y644 (1) PAT644 (1) PAT444 (1) Y81KFT (1) PAT81KFT (1)	W29VT(2) X29RT(4)	W29VT(2) W29RT(2) X29RT(4)	U29RT(1)	U29RT(1)	U29RT(1)	C29R(1)	L29RT(1)	YELLOW	16	1-1/16"										
YA31L2NT38FX	4	250 FLEX 637/24 CLASS I, K, M	150	3/8"	.88 [22]	1.06 [27]	.96 [24]	1.84 [47]	1.00 [25]	.41 [10]	3.51 [89]	.41 [10]	.18 [4]		W30VT(2)	W30VT(2) W30RT(2)	U30RT(2)	U30RT(2)	U30RT(2)	C30R(2)	L30RT(1)	WHITE	17	1-1/8"										
YA32L2NT38FX	4	313.1 kcmil 775/24 300 FLEX	185	3/8"	.95 [24]	1.19 [30]	.96 [24]	1.84 [47]	1.00 [25]	.41 [10]	3.69 [94]	.41 [10]	.20 [5]		W31VT(2)	W31VT(2) W31RT(2)	U31RT(2)	U31RT(2)	U31RT(2)	C31R(2)	L31RT(1)	RED	18	1-1/4"										
YA34L2NT38FX	4	373.7 kcmil 925/24 350 FLEX	240	3/8"	1.06 [27]	1.27 [32]	.96 [24]	2.58 [66]	1.00 [25]	.41 [10]	3.88 [99]	.41 [10]	.23 [6]		W32VT(2)	W32VT(2) W32RT(2)	U32RT(2)	U32RT(2)	U32RT(2)	C32R(2)	L32RT(1)	BLUE	19	1-5/16"										
YA36L2ENT38E10FX	4	444.4 kcmil 1100/24 450 FLEX	---	3/8"	1.19 [30]	1.38 [35]	1.50 [38]	2.30 [58]	1.25 [32]	.41 [10]	4.49 [114]	.50 [13]	.27 [7]		----	----	U34RT(2)	U34RT(2)	U34RT(2)	C34R(1)	L34RT(1)	BROWN	20	1-7/16"										
YA36L2NT38FX	4			3/8"	1.19 [30]	1.38 [35]	1.63 [41]	2.03 [51]	1.00 [25]	.41 [10]	4.24 [108]	.50 [13]	.27 [7]		----	----	U38XRT(2)	U38XRT(2)	U38XRT(2)	--	L38RT(1)	PINK	L99	1-7/16"										
YA38L2ENT38FX	4	535.3 kcmil 1325/24 500 FLEX	300	3/8"	1.25 [32]	1.45 [37]	1.50 [38]	2.03 [51]	1.00 [25]	.41 [10]	4.35 [110]	.50 [13]	.27 [7]		----	----	U39RT(2)	U39RT(2)	U39RT(2)	C39R(1)	L39RT(1)	BLACK	24	1-5/16"										
YA38L2NT38FX	4			3/8"	1.25 [32]	1.45 [37]	1.63 [41]	2.03 [51]	1.00 [25]	.41 [10]	4.35 [110]	.50 [13]	.27 [7]		----	----	U44XRT(2)	U44XRT(2)	U44XRT(2)	C44R(1)	L44RT(1)	YELLOW	L115	1-5/8"										
YA38L2NNTFX	4			1/2"	1.25 [32]	1.45 [37]	1.63 [41]	3.03 [77]	1.75 [44]	.56 [14]	5.35 [136]	.63 [16]	.27 [7]		----	----	U44XRT(2)	U44XRT(2)	U44XRT(2)	C44R(1)	L44RT(1)	YELLOW	L115	1-5/8"										
YA40L2NNTFX	4	646 kcmil 1600/24 650 FLEX	400	1/2"	1.35 [34]	1.42 [36]	1.63 [41]	3.03 [77]	1.75 [44]	.56 [14]	5.38 [137]	.63 [16]	.30 [8]		----	----	U49RT(2)	U49RT(2)	U49RT(2)	C49R(1)	L49RT(1)	BLACK	24	1-5/16"										
YA44L2NNTFX	4	777.7 kcmil 1925/24 750 FLEX	500	1/2"	1.50 [38]	1.65 [42]	1.63 [41]	3.03 [77]	1.75 [44]	.56 [14]	5.74 [146]	.63 [16]	.33 [8]	----	----	U49RT(2)	U49RT(2)	U49RT(2)	C49R(1)	L49RT(1)	BLACK	24	1-5/16"											
YA44L2NT38FX	4			3/8"	1.50 [38]	1.65 [42]	1.63 [41]	2.03 [51]	1.00 [25]	.41 [10]	4.74 [120]	.50 [13]	.33 [8]	----	----	P44RT(2)	P45RT(2)	S45RT(2)	C45R(1)	L45RT(1)	WHITE	27	2-1/16"											
YA45L2NT38FX	4	929 kcmil 2300/24	---	3/8"	1.69 [43]	2.00 [51]	1.70 [43]	2.02 [51]	1.00 [25]	.41 [10]	5.18 [132]	.50 [13]	.38 [10]	----	----	P44RT(2)	P45RT(2)	S45RT(2)	C45R(1)	L45RT(1)	WHITE	27	2-1/16"											

B



TOLERANCE BLOCK							
CONNECTOR SIZE	TOLERANCES						
	B	C	E	K DIA.	L	N	O.D.
-8C THRU -25	±.06	±.04	±.02	±.02	±.09	±.03	±.01
-26 THRU -34	±.08	±.04	±.02	±.02	±.12	±.03	±.01
-35 AND UP	±.09	±.06	±.02	±.02	±.15	±.06	±.01

- NOTES:
- MATERIAL: COPPER TUBING.
 - FINISH: TIN PLATED.
 - CAT NO. PUADP-1 ADAPTOR IS REQUIRED TO USE "U" DIES IN Y46 SERIES TOOLS.
 - DIMENSIONS IN BRACKETS [] ARE IN MILLIMETERS ROUNDED OFF TO THE NEAREST MILLIMETER, UNLESS OTHERWISE NOTED, AND ARE FOR REFERENCE ONLY.
 - CAT. NO. PT6515 ADAPTOR IS REQUIRED TO USE "U" TYPE DIES IN Y45 TOOLS.

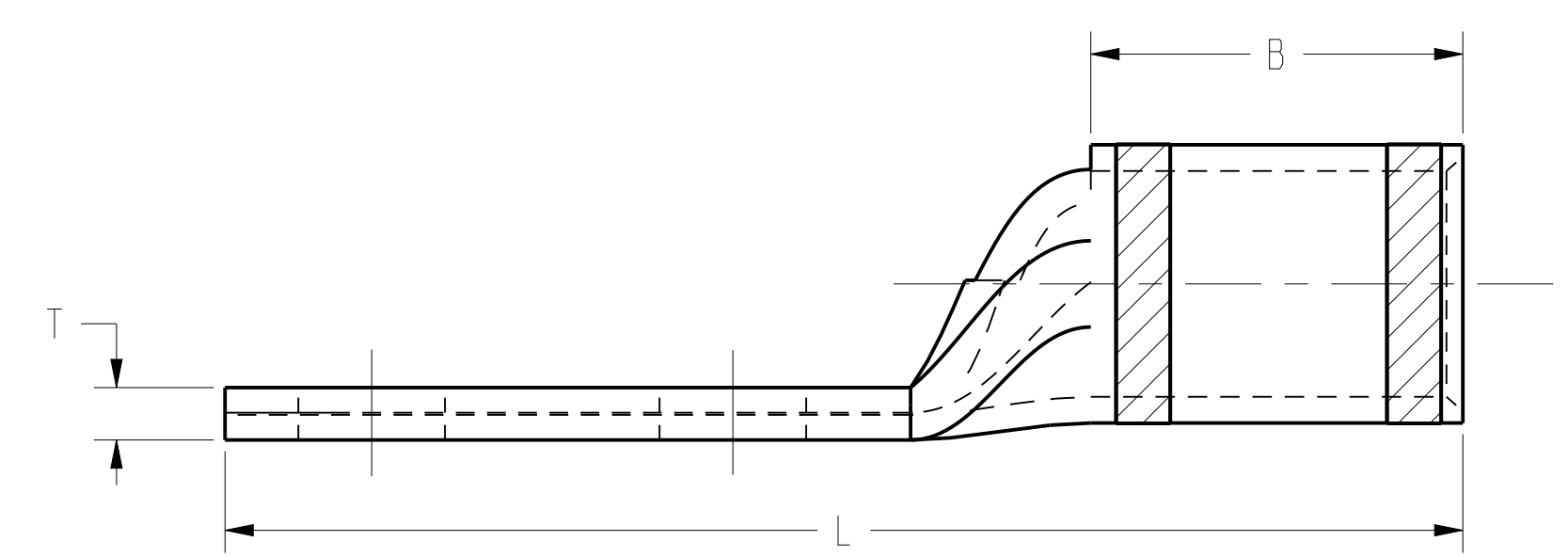


FIG. 4

REV	DATE	DESCRIPTION	ECO	BY	C'K
W	2019-05-14 01:00:00 EDT	ADDED CAT. YA29LNT12 & YA30LNT12	51401	YR	RB

TO ORDER BURNDY® PRODUCTS CALL
 UNITED STATES
 1-800-346-4175 (LONDONDERRY, NH)
 CANADA:
 1-800-361-6975 (QUEBEC)
 1-800-387-6487 (ALL OTHER PROVINCES)
 FOR PRODUCT INFO: <http://www.burndy.com>

HYLUG™ COPPER (NARROW TONGUE)

ITEM NO:	N/A
CAT. NO.:	YA-L-NT-(TABLE)
DRAWN BY:	AUGUSTIN.S 07/03/10
CHECKER:	--
DSN APPVL:	J MICHAUD 06/11/11
MFG APPVL:	T THRELFALL 06/23/11
QA APPVL:	T WATTS 06/13/11
MKT APPVL:	J SYLVIA 06/13/11
PROD FAM:	CM&R COMPRESSION
PROJECT #:	--
DOCUMENT TYPE:	Sales
REL LEVEL:	Released

BURNDY

SCALE: 3:1

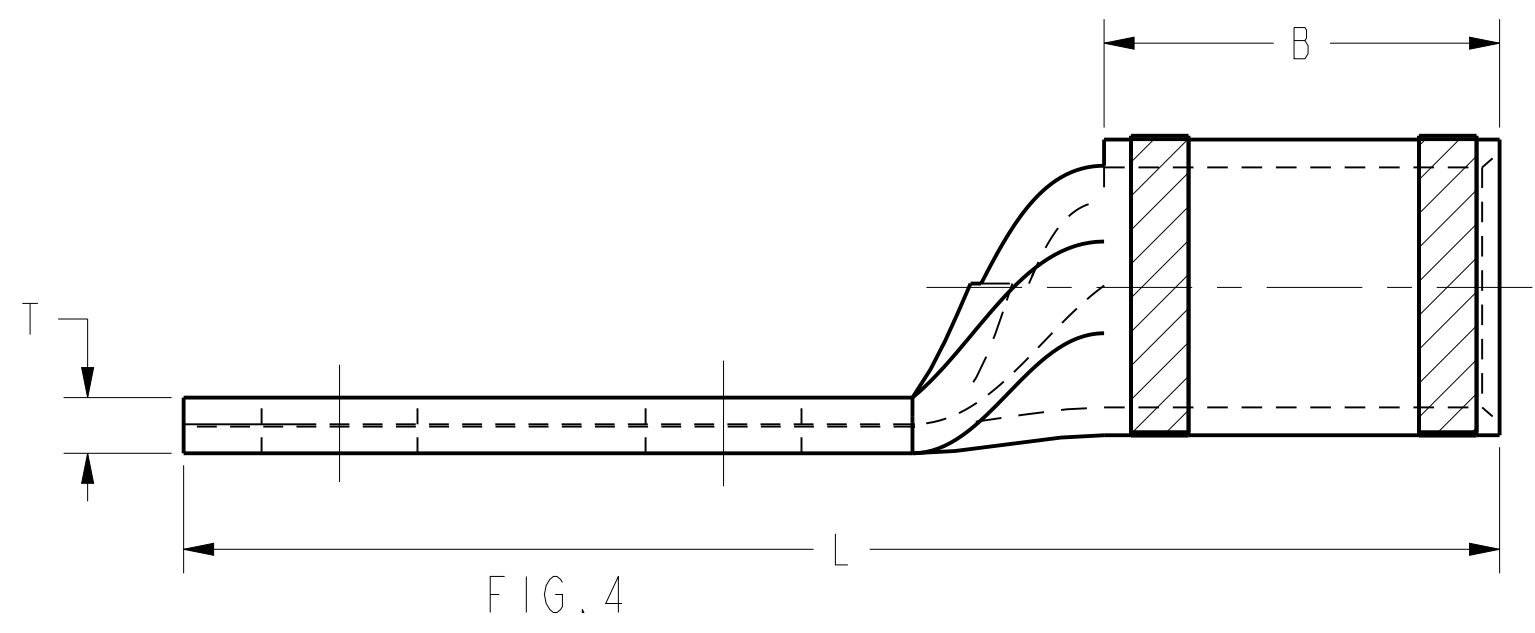
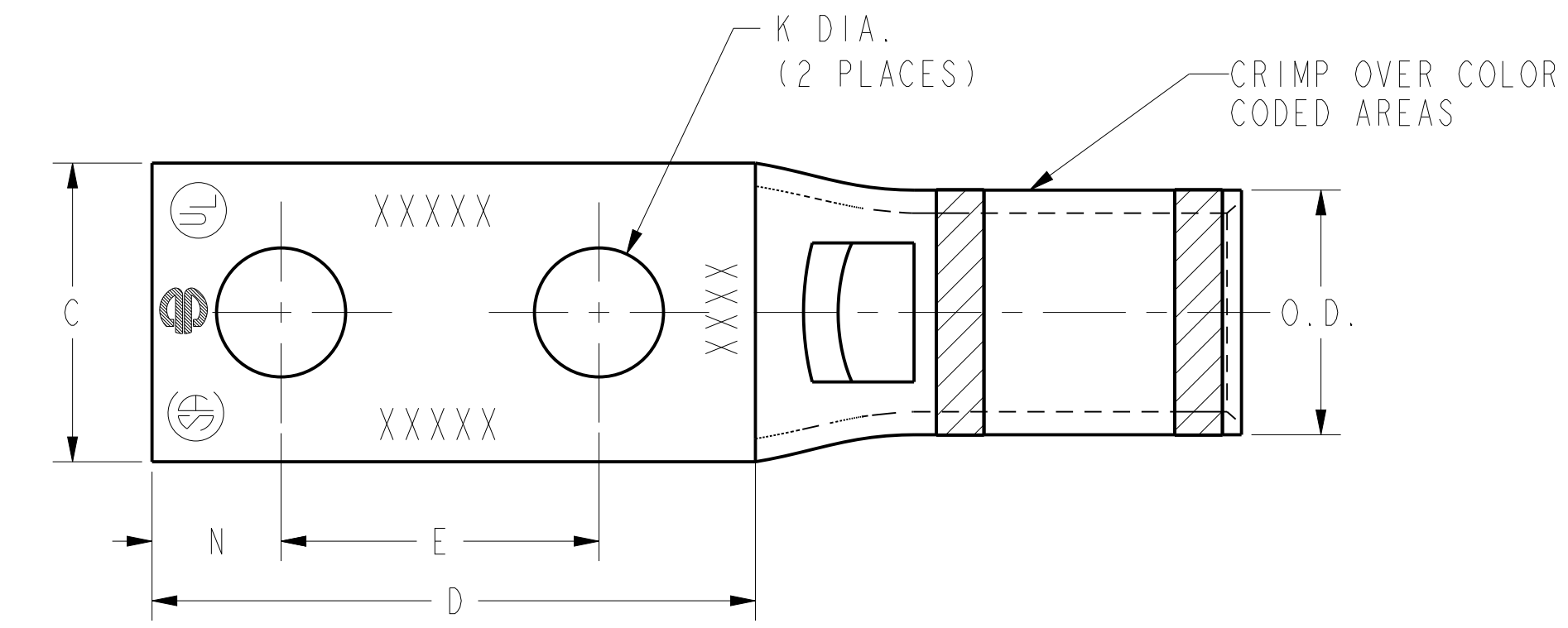
DRAWING NO.	30003952
REV	W
SHEET	7 OF 12

A

A

DRAWING NO. 30003952	7	6	5	4	3	2	1	INSTALLATION TOOLING																					
								CATALOG NUMBER	FIG. NO.	CONDUCTOR		STUD HOLE SIZE	DIMENSIONS							DIELESS (# OF CRIMPS)	MECHANICAL		HYDRAULIC						WIRE STRIP LENGTH
										AWG	MM ²		O.D.	B	C	D MIN.	E	K DIA.	L		N	T	MD6, OUR840, MD7-34R	BCT500HS, Y500CTHS	Y35, Y39, Y750, PAT750	Y46 PAT46	Y45	Y48	
YAV4CL2NT10E1FX	4	#4 AWG #4 WELD 91/24 105/24	---	#10	.38 [10]	.50 [13]	.41 [10]	1.52 [37]	1.00 [25]	.21 [5]	2.33 [59]	.25 [6]	.09 [2]	Y122CMR (2) MY29-11(1) Y1MRTC(2) Y81KFT(1) Y81KFTMBH(1) PAT81KFT-18V(1)	W4CVT(1) W4CRT(1) X4CRT(1)	W4CVT(1) W4CRT(1) X4CRT(1)	U4CRT(1)	U4CRT(1)	U4CRT(1)	---	---	GRAY	8	9/16"					
YAV4CL2NT10E2FX	4				.38 [10]	.50 [13]	.41 [10]	1.52 [37]	.75 [19]	.21 [5]	2.08 [53]	.25 [6]	.09 [2]																
YAV4CL2NT10FX	4				.38 [10]	.50 [13]	.41 [10]	1.15 [29]	.63 [16]	.21 [5]	1.95 [50]	.25 [6]	.09 [2]																
YAV4CL2NT14FX	4				1/4"	.38 [10]	.50 [13]	.45 [11]	1.26 [32]	.63 [16]	.27 [7]	2.08 [53]	.31 [8]												.09 [2]				
YAV2CL2NT10FX	4	#2 AWG #2 WELD 125/24 150/24	35	#10	.46 [12]	.63 [16]	.48 [12]	1.15 [29]	.63 [16]	.21 [5]	2.14 [54]	.25 [6]	.10 [3]	Y122CMR (2) MY29-11(1) Y1MRTC(2) Y81KFT(1) PAT644 (1) PAT81KFT-18V(1) PAT444 (1)	W2CVT(1) W2CRT(1) X2CRT(1)	W2CVT(1) W2CRT(1) X2CRT(1)	U2CRT(1)	U2CRT(1)	U2CRT(1)	---	---	BROWN	10	11/16"					
YAV2CL2NT14E1FX	4				1/4"	.46 [12]	.63 [16]	.48 [12]	1.65 [42]	1.00 [25]	.27 [7]	2.63 [67]	.31 [8]												.10 [3]				
YAV2CL2NT14FX	4				1/4"	.46 [12]	.63 [16]	.48 [12]	1.28 [33]	.63 [16]	.27 [7]	2.26 [57]	.31 [8]												.10 [3]				
YAV1CL2NT14FX	4	#1 AWG #1 WELD 175/24 225/24	---	1/4"	.51 [13]	.62 [16]	.50 [13]	1.28 [33]	.63 [16]	.27 [7]	2.28 [58]	.31 [8]	.12 [3]	W1CVT(1) W1CRT-1(1) X1CRT-1(1)	W1CVT(1) W1CRT-1(1) X1CRT-1(1)	U1CRT-1(1)	U1CRT-1(1)	U1CRT-1(1)	---	---	GREEN	11	11/16"						
YAV1CL2NT516FX	4				5/16"	.51 [13]	.63 [16]	.58 [15]	1.70 [43]	1.00 [25]	.33 [8]	2.72 [69]	.34 [9]											.12 [3]					
YAV25L2NT14E1FX	4	1/0 AWG 1/0 WELD 275/24	50	1/4"	.56 [14]	.69 [18]	.64 [16]	1.65 [42]	1.00 [25]	.27 [7]	2.76 [70]	.31 [8]	.12 [3]	MY2911 (1) Y81KFT (1) PAT81KFT (1) Y644 (1) PAT644 (1) PAT444 (1)	W25VT(2) W25RT(2) X25RT(2)	W25VT(2) W25RT(2) X25RT(2)	U25RT(1)	U25RT(1)	U25RT(1)	---	---	PINK	12	11/16"					
YAV25L2NT14FX	4				1/4"	.56 [14]	.69 [18]	.64 [16]	1.28 [33]	.63 [16]	.27 [7]	2.39 [61]	.31 [8]												.12 [3]				
YAV25L2NT516FX	4				5/16"	.56 [14]	.69 [18]	.58 [15]	1.71 [44]	1.00 [25]	.33 [8]	2.82 [72]	.34 [9]												.12 [3]				
YAV26L2NT14FX	4	2/0 AWG 2/0 WELD 325/24	70	1/4"	.63 [16]	.81 [21]	.76 [19]	1.28 [33]	.63 [16]	.27 [7]	2.56 [65]	.31 [8]	.13 [3]	W26VT(2) W26RT(2) X26RT(2)	W26VT(2) W26RT(2) X26RT(2)	U26RT(1)	U26RT(1)	U26RT(1)	---	---	BLACK	13	13/16"						
YAV26L2NT516FX	4				5/16"	.63 [16]	.81 [21]	.58 [15]	1.71 [44]	1.00 [25]	.33 [8]	2.99 [76]	.34 [9]											.13 [3]					
YAV26L2NT38FX	4				3/8"	.63 [16]	.81 [21]	.63 [16]	1.84 [47]	1.00 [25]	.41 [10]	3.23 [82]	.41 [10]											.13 [9]					
YAV28L2ENT14FX	4	4/0 AWG 4/0 WELD 550/24	---	1/4"	.77 [20]	1.03 [19]	.76 [19]	1.28 [33]	.63 [16]	.27 [7]	2.86 [73]	.31 [8]	.15 [4]	W28VT(2) W28RT(2) X28RT(3)	W28VT(2) W28RT(2) X28RT(3)	U28RT(1)	U28RT(1)	U28RT(1)	C28R(1)	L28RT(1)	PURPLE	15	1-1/16"						
YAV28L2NT38FX	4				3/8"	.77 [20]	1.03 [19]	.94 [24]	1.84 [47]	1.00 [25]	.40 [10]	3.43 [87]	.41 [10]											.15 [4]					

TOLERANCE BLOCK							
CONNECTOR SIZE	TOLERANCES						
	B	C	E	K DIA.	L	N	O.D.
-8C THRU -25	±.06	±.04	±.02	±.02	±.09	±.03	±.01
-26 THRU -34	±.08	±.04	±.02	±.02	±.12	±.03	±.01
-35 AND UP	±.09	±.06	±.02	±.02	±.15	±.06	±.01



- NOTES:
- MATERIAL: COPPER TUBING.
 - FINISH: TIN PLATED.
 - CAT NO. PUADP-1 ADAPTOR IS REQUIRED TO USE 'U' DIES IN Y46 SERIES TOOLS.
 - DIMENSIONS IN BRACKETS [] ARE IN MILLIMETERS ROUNDED OFF TO THE NEAREST MILLIMETER, UNLESS OTHERWISE NOTED, AND ARE FOR REFERENCE ONLY.
 - CAT. NO. PT6515 ADAPTER IS REQUIRED TO USE "U" TYPE DIES IN Y45 TOOLS.

TO ORDER BURNDY® PRODUCTS CALL

UNITED STATES
1-800-346-4175 (LONDONDERRY, NH)

CANADA:
1-800-361-6975 (QUEBEC)
1-800-387-6487 (ALL OTHER PROVINCES)

FOR PRODUCT INFO: <http://www.burndy.com>

HYLUG™ COPPER (NARROW TONGUE)

ITEM NO: N/A

CAT. NO: YA-L-NT-(TABLE)

DRAWN BY: AUGUSTIN.S 07/03/10

CHECKER: --

DSN APPVL: J MICHAUD 06/11/11

MFG APPVL: T THRELFALL 06/23/11

QA APPVL: T WATTS 06/13/11

MKT APPVL: J SYLVIA 06/13/11

SCALE: 3:1

PROD FAM: CM&R COMPRESSION

DRAWING NO: 30003952

PROJECT #: --

SIZE: D

DOCUMENT TYPE: Sales

REL LEVEL: Released

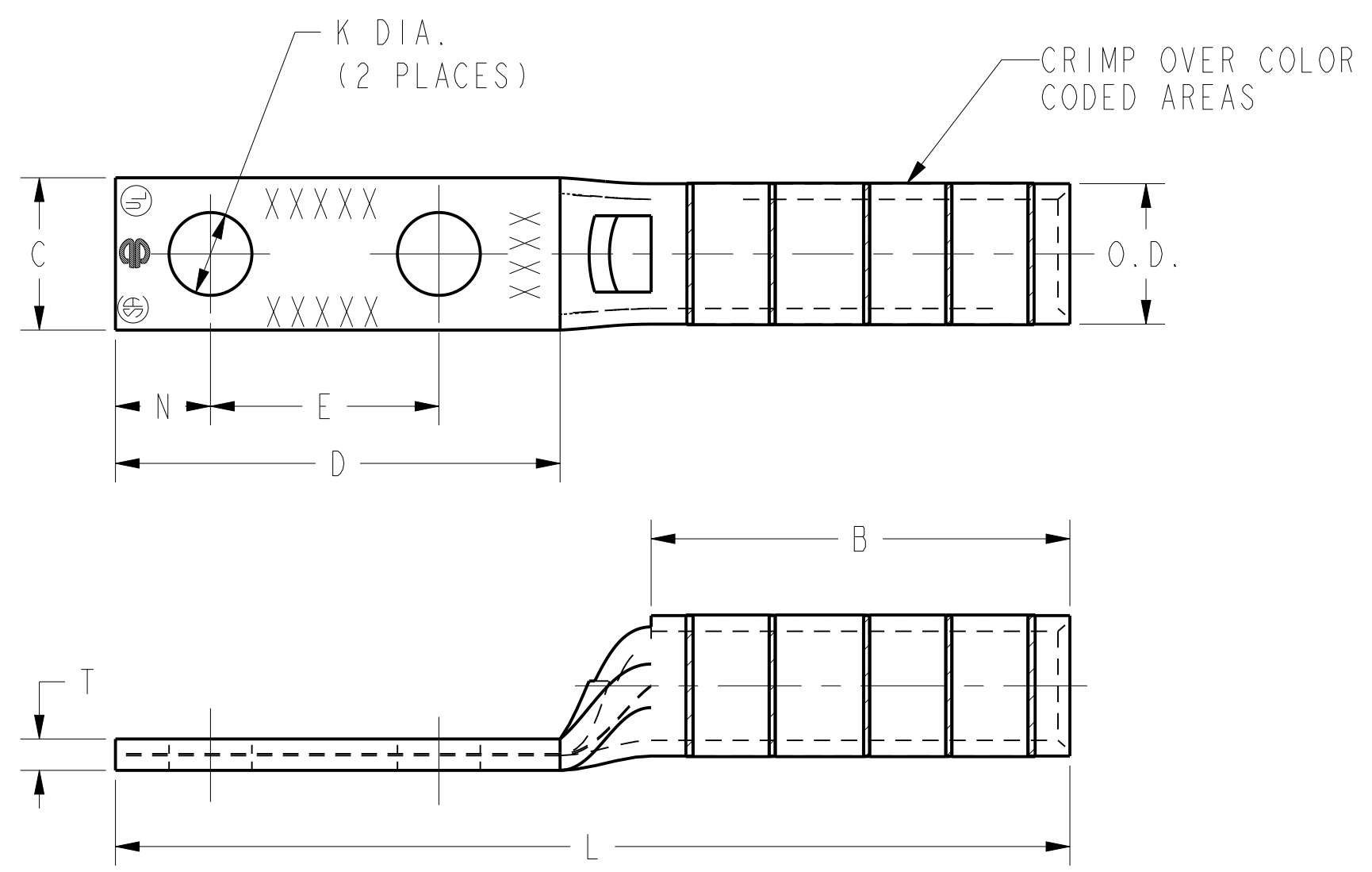
SHEET 8 OF 12

BURNDY

REV	DATE	DESCRIPTION	ECO	BY	C'H'K.
W	2019-05-14 01:00:00 EDT	ADDED CAT. YA29LNT12 & YA30LNT12	51401	YR	RB

CATALOG NUMBER	FIG. NO.	CONDUCTOR		STUD HOLE SIZE	DIMENSIONS									DIELESS (# OF CRIMPS)	INSTALLATION TOOLING								WIRE STRIP LENGTH	
		AWG	MM ²		O.D.	B	C	D MIN.	E	K DIA.	L	N	T		MECHANICAL		HYDRAULIC				COLOR CODE	DIE INDEX		
															MD6, OUR840, MD7-34R	BCT500HS, Y500CTS	Y35, Y39, Y750, PAT750	Y46 PAT46 \triangle 3	Y45 \triangle 5	Y48				Y60
YAZV4C2NT14E2FX	5	#4 AWG #4 WELD 91/24 105/24	---	1/4"	.38 [10]	1.25 [32]	.44 [11]	1.40 [36]	.75 [19]	.27 [7]	2.95 [75]	.31 [8]	.09 [2]	Y1MRTC(4) MY29-11(2) Y122CMR (2) Y81KFT(1) Y81KFTMBH(1) PAT81KFT-18V(1)	W4CVT(2) W4CRT(2) X4CRT(2)	W4CVT(2) W4CRT(2) X4CRT(2)	U4CRT(2)	U4CRT(2)	U4CRT(2)	--	--	GRAY	8	1-5/16"
YAZV2C2NT14E2FX	5	#2 AWG #2 WELD 125/24 150/24	35	1/4"	.46 [12]	1.38 [35]	.50 [13]	1.40 [36]	.75 [19]	.27 [7]	3.14 [80]	.31 [8]	.10 [3]	Y1MRTC(4) MY29-11(4) Y644HS(1) Y81KFT(1) Y122CMR (2) PAT81KFT-18V(1)	W2CVT(2) W2CRT(2) X2CRT(2)	W2CVT(2) W2CRT(2) X2CRT(2)	U2CRT(2)	U2CRT(2)	U2CRT(2)	--	--	BROWN	10	1-7/16"
YAZV282NT38FX	5	4/0 AWG 4/0 WELD 550/24	---	3/8"	.77 [20]	1.62 [41]	.94 [24]	1.84 [47]	1.00 [25]	.40 [10]	3.96 [101]	.41 [10]	.17 [20]	MY2911 (1) Y644 (1) PAT644 (1) PAT444 (1) Y81KFT (1) PAT81KFT (1)	W28VT(4) W28RT(4) X28RT(6)	W28VT(4) W28RT(4) X28RT(6)	U28RT(2)	U28RT(2)	U28RT(2)	C28R(1)	L28RT(1)	PURPLE	15	1-11/16"
YAZV292NT516FX	5	4/0 FLEX CLASS I,K,M	---	5/16"	.80 [20]	2.00 [51]	.96 [24]	1.71 [44]	1.00 [25]	.33 [8]	4.28 [109]	.34 [9]	.16 [4]	MY2911 (1) Y644 (1) PAT644 (1) PAT444 (1) Y81KFT (1) PAT81KFT (1)	W29VT(4) X29RT(8)	W29RT(4) X29RT(8)	U29RT(2)	U29RT(2)	U29RT(2)	C29R(1)	L29RT(1)	YELLOW	16	2-1/16"
YAZ342NT38FX	5	373.7 kcmil 925/24 350 FLEX	240	3/8"	1.06 [27]	2.25 [57]	.96 [24]	1.84 [47]	1.00 [25]	.40 [10]	4.85 [123]	.41 [10]	.23 [6]	Y644 (1) PAT644 (1) PAT444 (1) Y81KFT (1) PAT81KFT (1)	W32VT(4)	W32RT(4) W32RT(4)	U32RT(4)	U32RT(4)	U32RT(4)	C32R(2)	L32RT(2)	BLUE	19	2-5/16"
YAZ382ENT38FX	5	535.3 kcmil 1325/24 500 FLEX	300	3/8"	1.25 [32]	2.81 [71]	1.46 [37]	2.02 [51]	1.00 [25]	.41 [10]	5.72 [145]	.50 [13]	.27 [7]	Y644 (1) PAT644 (1) PAT444 (1) Y81KFT (1) PAT81KFT (1)	----	----	U38XRT(4)	U38XRT(4)	U38XRT(4)	C38R(2)	L38RT(2)	PINK	L99	2-7/8"

TOLERANCE BLOCK							
CONNECTOR SIZE	TOLERANCES						
	B	C	E	K DIA.	L	N	O.D.
-8C THRU -25	±.06	±.04	±.02	±.02	±.09	±.03	±.01
-26 THRU -34	±.08	±.04	±.02	±.02	±.12	±.03	±.01
-35 AND UP	±.09	±.06	±.02	±.02	±.15	±.06	±.01



- NOTES:
- MATERIAL: COPPER TUBING.
 - FINISH: TIN PLATED.
 - CAT NO. PUADP-1 ADAPTOR IS REQUIRED TO USE "U" DIES IN Y46 SERIES TOOLS.
 - DIMENSIONS IN BRACKETS [] ARE IN MILLIMETERS ROUNDED OFF TO THE NEAREST MILLIMETER, AND ARE FOR REFERENCE ONLY.
 - CAT. NO. PT6515 ADAPTER IS REQUIRED TO USE "U" TYPE DIES IN Y45 TOOLS.

TO ORDER BURNDY® PRODUCTS CALL

UNITED STATES
1-800-346-4175 (LONDONDERRY, NH)

CANADA:
1-800-361-6975 (QUEBEC)
1-800-387-6487 (ALL OTHER PROVINCES)

FOR PRODUCT INFO: <http://www.burndy.com>

HYLUG™ COPPER (NARROW TONGUE)	
ITEM NO:	N/A
CAT. NO:	YA-L-NT-(TABLE)
DRAWN BY:	AUGUSTIN.S 07/03/10
CHECKER:	--
DSN APPVL:	J MICHAUD 06/11/11
MFG APPVL:	T THRELFALL 06/23/11
QA APPVL:	T WATTS 06/13/11
MKT APPVL:	J SYLVIA 06/13/11
PROD FAM:	CM&R COMPRESSION
DRAWING NO:	30003952
PROJECT #:	--
DOCUMENT TYPE:	Sales
REL LEVEL:	Released

SCALE: 3:1

30003952

SHEET 9 OF 12

REV	DATE	DESCRIPTION	ECO	BY	C'H'K.
W	2019-05-14 01:00:00 EDT	ADDED CAT. YA29LNT12 & YA30LNT12	51401	YR	RB

DRAWING NO. 30003952	7	6	5	4	3	2	1	CATALOG NUMBER	FIG. NO.	CONDUCTOR		STUD HOLE SIZE	DIMENSIONS											INSTALLATION TOOLING										WIRE STRIP LENGTH
										AWG	MM ²		O.D.	B	C	D MIN.	E	K DIA.	L	N	T	DIELESS (# OF CRIMPS)	MECHANICAL		HYDRAULIC						COLOR CODE	DIE INDEX		
																							MD6, OUR840, MD7-34R	BCT500HS, Y500CTHS	Y35, Y39, Y750, PAT750	Y46 PAT46	Y45	Y48	Y60					
YAZ382NNTFX	5	535.3 kcmil 1325/24 500 FLEX	300	1/2"	1.25 [32]	2.81 [71]	1.62 [41]	3.02 [77]	1.75 [44]	.56 [14]	6.72 [171]	.62 [16]	.27 [7]	Y644 (1) PAT644 (1) PAT444 (1) Y81KFT (1) PAT81KFT (1)	----	----	U38XRT(4)	U38XRT(4)	U38XRT(4)	--	L38RT(2)	PINK	L99	2-7/8"										
YAZ382NT38FX	5	535.3 kcmil 1325/24 500 FLEX	300	3/8"	1.25 [32]	2.81 [71]	1.62 [41]	2.03 [51]	1.00 [25]	.41 [10]	5.72 [145]	.50 [13]	.27 [7]	Y644 (1) PAT644 (1) PAT444 (1) Y81KFT (1) PAT81KFT (1)	----	----	U38XRT(4)	U38XRT(4)	U38XRT(4)	--	L38RT(2)	PINK	L99	2-7/8"										
YAZ442NT38FX	5	777.7 kcmil 1925/24 750 FLEX	500	3/8"	1.50 [38]	3.00 [76]	1.62 [41]	2.03 [51]	1.00 [25]	.40 [10]	6.09 [155]	.50 [13]	.33 [8]	PAT644 (1) PAT444 (1) Y81KFT (2) PAT81KFT (2)	----	----	U44XRT(4)	U44XRT(4)	U44XRT(4)	C44RT(2)	L44RT(2)	YELLOW	L115	3-1/16"										

TOLERANCE BLOCK							
CONNECTOR SIZE	TOLERANCES						
	B	C	E	K DIA.	L	N	O.D.
-8C THRU -25	±.06	±.04	±.02	±.02	±.09	±.03	±.01
-26 THRU -34	±.08	±.04	±.02	±.02	±.12	±.03	±.01
-35 AND UP	±.09	±.06	±.02	±.02	±.15	±.06	±.01

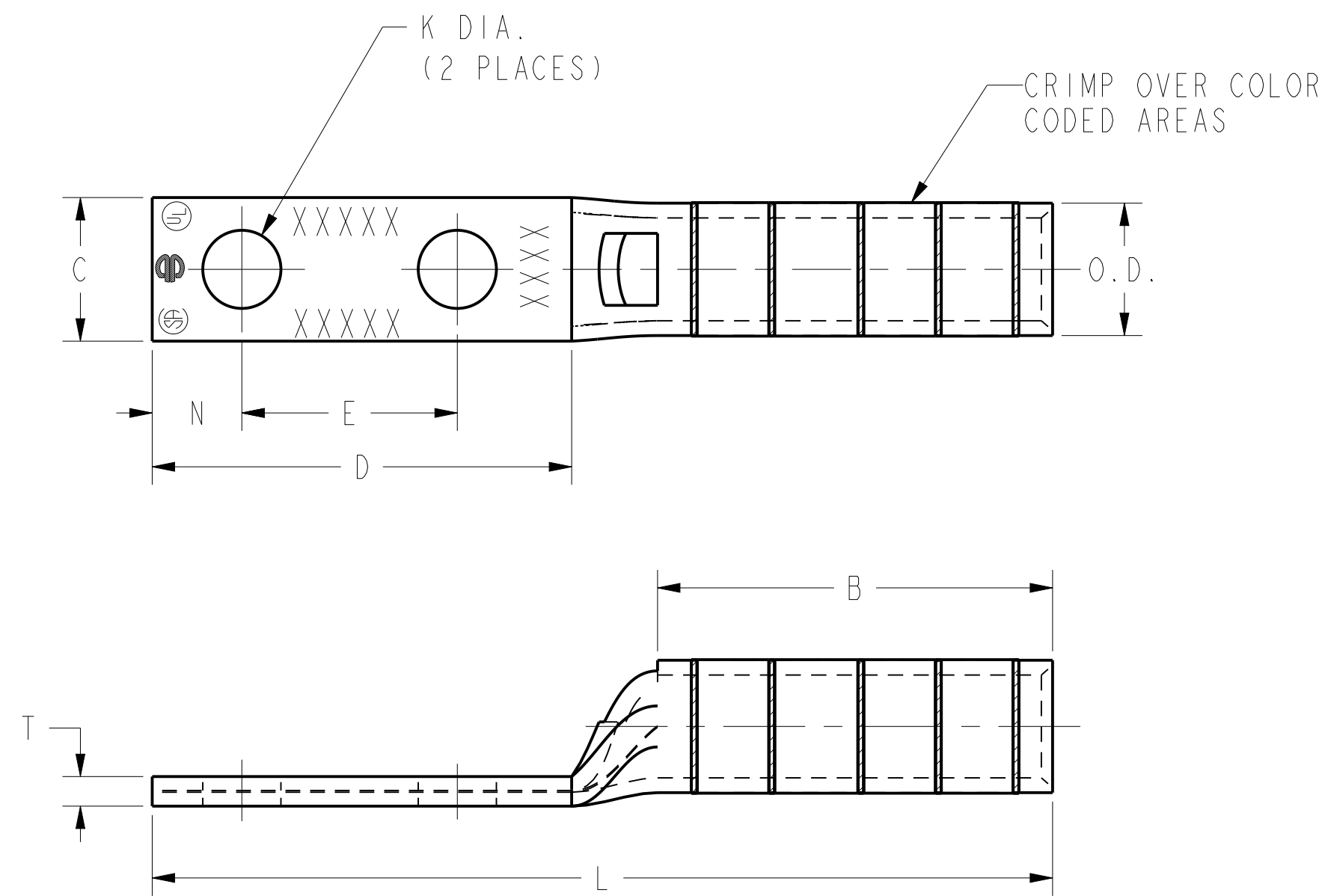


FIG. 5

NOTES:

- MATERIAL: COPPER TUBING.
- FINISH: TIN PLATED.
- CAT NO. PUADP-1 ADAPTOR IS REQUIRED TO USE "U" DIES IN Y46 SERIES TOOLS.
- DIMENSIONS IN BRACKETS [] ARE IN MILLIMETERS ROUNDED OFF TO THE NEAREST MILLIMETER, UNLESS OTHERWISE NOTED, AND ARE FOR REFERENCE ONLY.
- CAT. NO. PT6515 ADAPTER IS REQUIRED TO USE "U" TYPE DIES IN Y45 TOOLS.

TO ORDER BURNDY® PRODUCTS CALL		HYLUG™ COPPER (NARROW TONGUE)	
UNITED STATES 1-800-346-4175 (LONDONDERRY, NH)		ITEM NO: N/A	CAT. NO: YA-L-NT-(TABLE)
CANADA: 1-800-361-6975 (QUEBEC) 1-800-387-6487 (ALL OTHER PROVINCES)		DRAWN BY: AUGUSTIN.S 07/03/10	CHECKER: --
FOR PRODUCT INFO: http://www.burndy.com		DSN APPVL: J MICHAUD 06/11/11	MFG APPVL: T THRELFALL 06/23/11
		QA APPVL: T WATTS 06/13/11	MKT APPVL: J SYLVIA 06/13/11
		PROD FAM: CM&R COMPRESSION	DRAWING NO: 30003952
		PROJECT #: --	SCALE: 3:1
		DOCUMENT TYPE: Sales	REV: W
		REL LEVEL: Released	SHEET 10 OF 12

REV	DATE	DESCRIPTION	ECO	BY	C'K
W	2019-05-14 01:00:00 EDT	ADDED CAT. YA29LNT12 & YA30LNT12	51401	YR	RB

REV: PEO200

CATALOG NUMBER	FIG. NO.	CONDUCTOR		STUD HOLE SIZE	DIMENSIONS									INSTALLATION TOOLING								WIRE STRIP LENGTH		
		AWG	MM ²		O.D.	B	C	D MIN.	E	K DIA.	L	N	T	MECHANICAL		HYDRAULIC				COLOR CODE	DIE INDEX			
														MD6, OUR840, MD7-34R	BCT500HS, Y500CTHS	Y35, Y39, Y750, PAT750	Y46 PAT46	Y45	Y48				Y60	
YAZ442NNT	6	1000 kcmil	500	1/2"	1.50 [38]	3.00 [76]	1.62 [41]	3.08 [78]	1.75 [44]	.56 [14]	7.08 [180]	.65 [17]	.33 [8]	Y644 (1) PAT444 (1) Y81KFT (3) PAT81KFT (3)	----	----	----	P44RT(4)	S44RT(4)	C44R(2)	L44RT(2)	WHITE	27	3-1/16"

TOLERANCE BLOCK							
CONNECTOR SIZE	TOLERANCES						
	B	C	E	K DIA.	L	N	O.D.
-8C THRU -25	±.06	±.04	±.02	±.02	±.09	±.03	±.01
-26 THRU -34	±.08	±.04	±.02	±.02	±.12	±.03	±.01
-35 AND UP	±.09	±.06	±.02	±.02	±.15	±.06	±.01

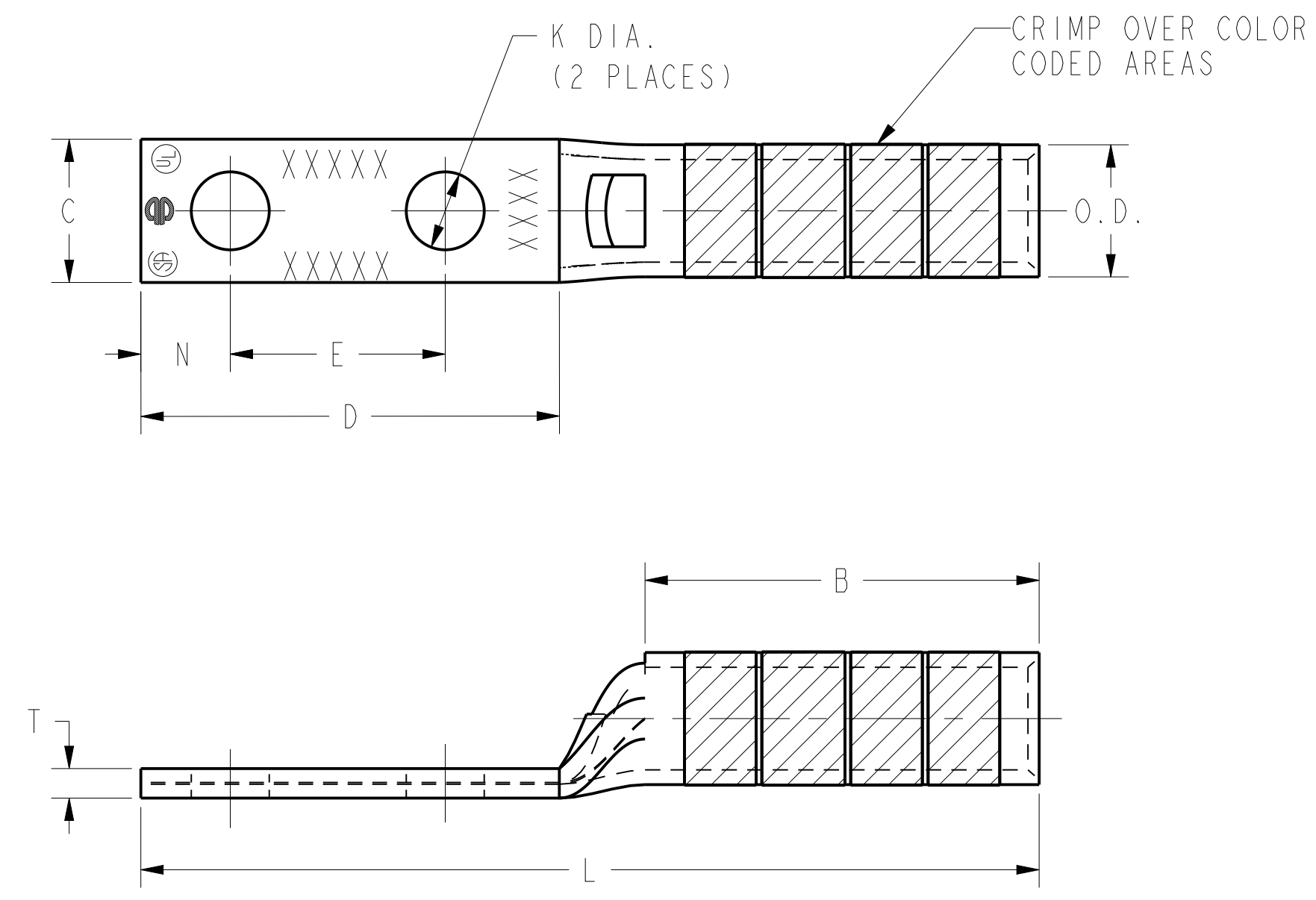


FIG. 6

- NOTES:
- MATERIAL: COPPER TUBING.
 - FINISH: TIN PLATED.
 - CAT NO. PUADP-1 ADAPTOR IS REQUIRED TO USE "U" DIES IN Y46 SERIES TOOLS.
 - DIMENSIONS IN BRACKETS [] ARE IN MILLIMETERS ROUNDED OFF TO THE NEAREST MILLIMETER, UNLESS OTHERWISE NOTED, AND ARE FOR REFERENCE ONLY.
 - CAT. NO. PT6515 ADAPTER IS REQUIRED TO USE "U" TYPE DIES IN Y45 TOOLS.

TO ORDER BURNDY® PRODUCTS CALL		HYLUG™ COPPER (NARROW TONGUE)	
UNITED STATES 1-800-346-4175 (LONDONDERRY, NH)		ITEM NO: N/A	CAT. NO: YA-L-NT-(TABLE)
CANADA: 1-800-361-6975 (QUEBEC) 1-800-387-6487 (ALL OTHER PROVINCES)		DRAWN BY: AUGUSTIN.S 07/03/10	CHECKER: --
FOR PRODUCT INFO: http://www.burndy.com		DSN APPVL: J MICHAUD 06/11/11	MFG APPVL: T THRELFALL 06/23/11
		QA APPVL: T WATTS 06/13/11	MKT APPVL: J SYLVIA 06/13/11
		PROD FAM: CM&R COMPRESSION	DRAWING NO: 30003952
		PROJECT #: --	SCALE: 2:1
		DOCUMENT TYPE: Sales	REV: W
		REL LEVEL: Released	SHEET 11 OF 12

REV	DATE	DESCRIPTION	ECO	BY	C'K.
W	2019-05-14 01:00:00 EDT	ADDED CAT. YA29LNT12 & YA30LNT12	51401	YR	RB

REV: PEO200

CATALOG NUMBER	FIG. NO.	CONDUCTOR		STUD HOLE SIZE	DIMENSIONS									DIELESS (# OF CRIMPS)	INSTALLATION TOOLING								WIRE STRIP LENGTH	
		AWG	MM ²		O.D.	B	C	D MIN.	H REF.	K DIA.	L	N	T		MECHANICAL		HYDRAULIC				COLOR CODE	DIE INDEX		
															MD6, OUR840, MD7-34R	BCT500HS, Y500CTHS	Y35, Y39, Y750, PAT750	Y46 PAT46	Y45	Y48				Y60
YA32LNT3890	I	400 kcmil	--	3/8" [M10]	.95 [24]	1.19 [30]	.96 [24]	.85 [26]	2.19 [56]	.41 [10]	1.45 [37]	.41 [10]	.19 [5]	Y644HS (1) Y81KFT(2) PAT444 (1) PAT81KFT-18V (2)	W32VT(4)	----	U32RT(2)	U32RT(2)	U32RT(2)	C32R(1)	L32RT(1)	BLUE	19 OR 470	1-1/4"

TOLERANCE BLOCK							
CONNECTOR SIZE	TOLERANCES						
	B	C	E	K DIA.	L	N	O.D.
-8C THRU -25	±.06	±.04	±.02	±.02	±.09	±.03	±.01
-26 THRU -34	±.08	±.04	±.02	±.02	±.12	±.03	±.01
-35 AND UP	±.09	±.06	±.02	±.02	±.15	±.06	±.01

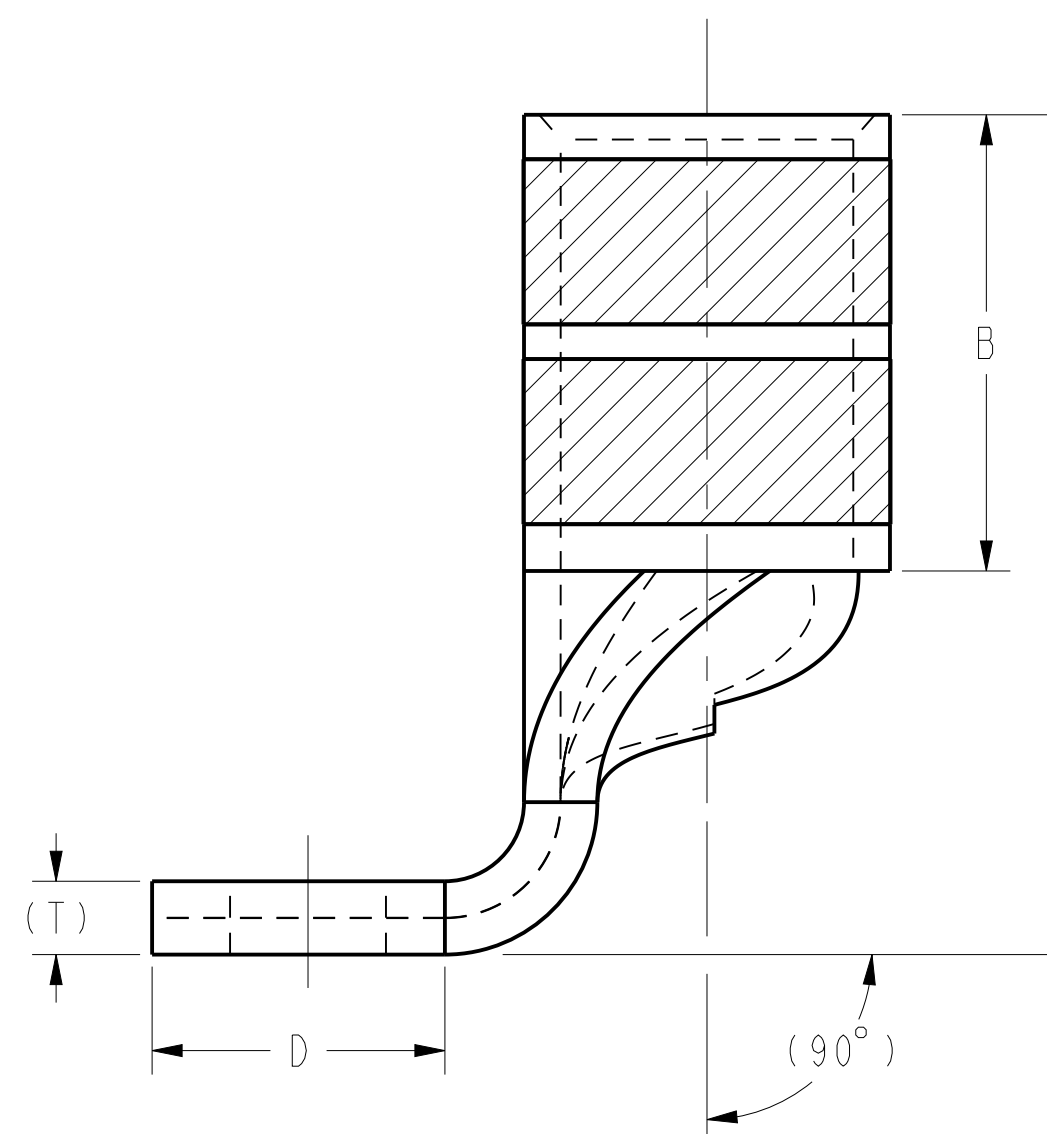
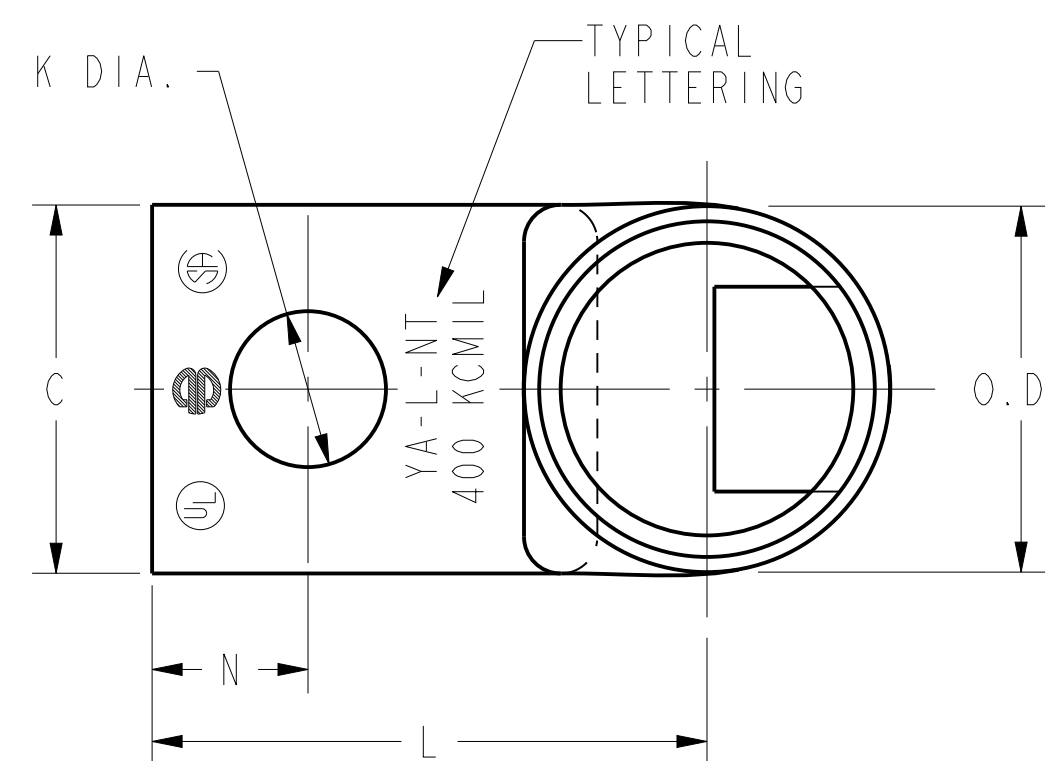


FIG. 1.

NOTES:

- MATERIAL: COPPER TUBING.
- FINISH: TIN PLATED.
- CAT NO. PUADP-1 ADAPTOR IS REQUIRED TO USE "U" DIES IN Y46 SERIES TOOLS.
- DIMENSIONS IN BRACKETS [] ARE IN MILLIMETERS ROUNDED OFF TO THE NEAREST MILLIMETER, UNLESS OTHERWISE NOTED, AND ARE FOR REFERENCE ONLY.
- CAT. NO. PT6515 ADAPTER IS REQUIRED TO USE "U" TYPE DIES IN Y45 TOOLS.

TO ORDER BURNDY® PRODUCTS CALL		HYLUG™ COPPER (NARROW TONGUE)	
UNITED STATES		ITEM NO: N/A	
1-800-346-4175 (LONDONDERRY, NH)		CAT. NO: YA-L-NT-(TABLE)	
CANADA:		DRAWN BY: AUGUSTIN.S 07/03/10	
1-800-361-6975 (QUEBEC)		CHECKER: --	
1-800-387-6487 (ALL OTHER PROVINCES)		DSN APPVL: J MICHAUD 06/11/11	
FOR PRODUCT INFO: http://www.burndy.com		MFG APPVL: T THRELFALL 06/23/11	
		QA APPVL: T WATTS 06/13/11	
		MKT APPVL: J SYLVIA 06/13/11	
		SCALE: 2:1	
		PROD FAM: CM&R COMPRESSION	
		DRAWING NO	
		PROJECT #: --	
		SIZE	
		30003952	
		DOCUMENT TYPE: Sales	
		REL LEVEL: Released	
		SHEET 12 OF 12	

REV	DATE	DESCRIPTION	ECO	BY	C'K.
W	2019-05-14 01:00:00 EDT	ADDED CAT. YA29LNT12 & YA30LNT12	51401	YR	RB

REV: PE0200