



## Main

Range of Product	Modicon ABE7
Product or Component Type	Solid state output relay sub-base
[Us] rated supply voltage	24 V DC PLC end 24 V DC preactuator end
Number of Channels	16
Number of terminal per channel	2
Relay Type	Soldered solid state relay

## Complementary

Terminal block type	Removable
Isolation PLC/operative part	No
Fixing mode	By clips 35 mm symmetrical DIN rail) By screws solid plate with fixing kit)
Current state 0 guaranteed	0.4 mA PLC end)
Voltage state 0 guaranteed	3.4 V PLC end
Current state 1 guaranteed	3.1 mA PLC end)
Voltage state 1 guaranteed	16.9 V PLC end
Maximum current per output common	8 A
Current per channel	0.5 A preactuator end
Minimum switching current	1 mA
Drop-out voltage	0.6 V preactuator end)
Maximum switching current	500 MA DC-12 500 mA DC-13
Maximum tungsten load	<10 W DC-6
Maximum residual current	0.3 mA preactuator end
Fault type	Overload Short-circuit
Fault indication	Yes
Switchable inductive energy L/R	<= 400(U.I) ms
Maximum circuit breaker threshold	0.75 A
Response time	<= 0.02 ms from state 1 to 0 <= 0.1 ms from state 0 to 1
Switching frequency	< 0.6/LI <sup>2</sup> Hz
Installation category	II IEC 60664-1
Tightening torque	5.31 lbf.in (0.6 N.m) flat Ø 3.5 mm
Width	8.11 in (206 mm)
Net Weight	0.89 lb(US) (0.405 kg)

## Environment

Product Certifications	UL[RETURN]GL[RETURN]CSA[RETURN]DNV[RETURN]EAC
IP degree of protection	IP2X conforming to IEC 60529
Protective treatment	TC
Resistance to incandescent wire	1382 °F (750 °C) 30 s IEC 60695-2-11
Shock resistance	15 gn 11 ms IEC 60068-2-27

Resistance to radiated fields	9.14 V/m (10 V/m) 26000000...1000000000 Hz)IEC 61000-4-3 level 3
Resistance to fast transients	2 kV level 3 IEC 61000-4-4
Ambient air temperature for operation	23...140 °F (-5...60 °C) IEC 61131-2
Ambient air temperature for storage	-40...176 °F (-40...80 °C) IEC 61131-2
Pollution degree	2 IEC 60664-1

## Ordering and shipping details

Category	22375-INTERFACE MODULE(ABA,R,S)
Discount Schedule	CP2
GTIN	3389110546293
Returnability	No
Country of origin	LV

## Packing Units

Unit Type of Package 1	PCE
Number of Units in Package 1	1
Package 1 Height	2.76 in (7.0 cm)
Package 1 Width	3.23 in (8.2 cm)
Package 1 Length	8.27 in (21.0 cm)
Package 1 Weight	16.08 oz (456.0 g)
Unit Type of Package 2	S03
Number of Units in Package 2	16
Package 2 Height	11.81 in (30.0 cm)
Package 2 Width	11.81 in (30.0 cm)
Package 2 Length	15.75 in (40.0 cm)
Package 2 Weight	17.57 lb(US) (7.971 kg)

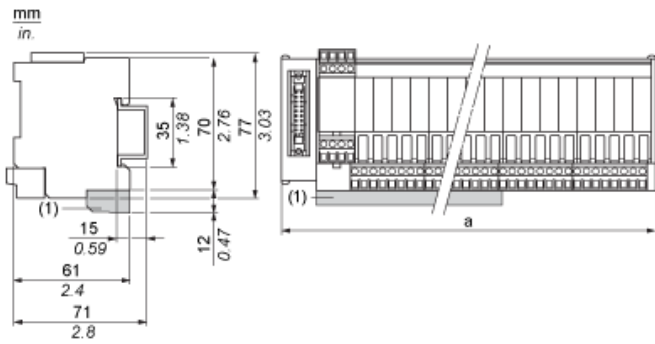
## Offer Sustainability

Sustainable offer status	Green Premium product
California proposition 65	WARNING: This product can expose you to chemicals including: Lead and lead compounds, which is known to the State of California to cause cancer and birth defects or other reproductive harm. For more information go to <a href="http://www.P65Warnings.ca.gov">www.P65Warnings.ca.gov</a>
REACH Regulation	<a href="#">REACH Declaration</a>
EU RoHS Directive	Pro-active compliance (Product out of EU RoHS legal scope)
Mercury free	Yes
China RoHS Regulation	<a href="#">China RoHS Declaration</a>
RoHS exemption information	<a href="#">Yes</a>
Environmental Disclosure	<a href="#">Product Environmental Profile</a>
Circularity Profile	<a href="#">End Of Life Information</a>
WEEE	The product must be disposed on European Union markets following specific waste collection and never end up in rubbish bins.

## Contractual warranty

Warranty	18 months
----------	-----------

Dimensions



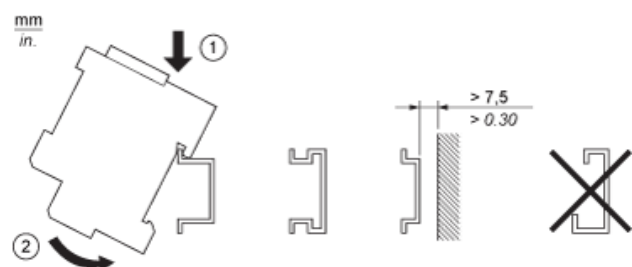
(1) ABE7BV20 / ABE7BV20E

ABE7	a in mm	a in in.
S08S2B0 / S08S2B0E	125	4.92
S08S2B1 / S08S2B1E	206	8.11
S16S2B0 / S16S2B0E	206	8.11

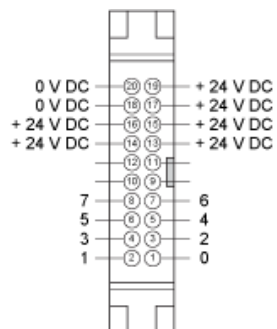
---

Mounting

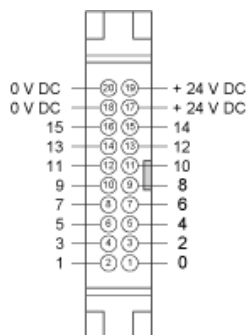
---



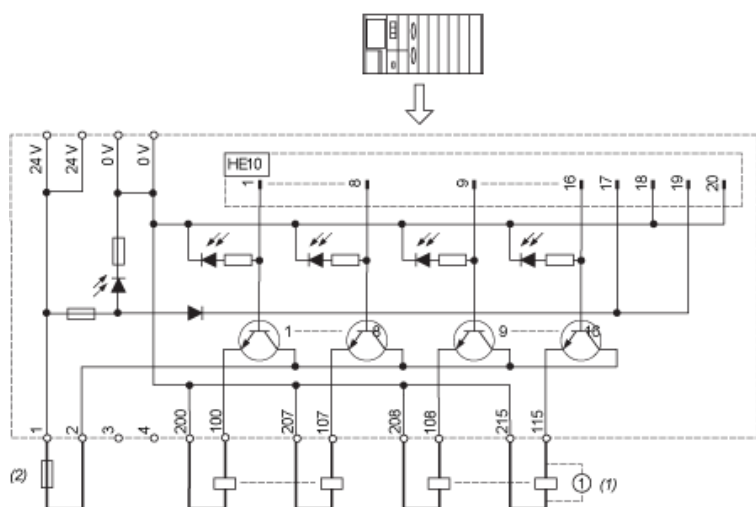
HE10 8 Channels



HE10 16 Channels



Wiring Diagram



- (1) Inductive load
- (2) AB1FUSE435U5X + quick acting FUSE 5 x 20 type F.

Curves for Determining Cable Type and Length According to the Current

16-channel Sub-base



L Cable length

I<sub>T</sub> Total current per sub base (A)

I<sub>A</sub> Average current per channel (mA)

(1) TSXCDP••2 and ABFH20H••0 cables with c.s.a. 0.08 mm<sup>2</sup> (AWG 28).

(2) TSXCDP••3 cables with c.s.a. 0.34 mm<sup>2</sup> (AWG 22).

(3) Cables with c.s.a. 0.13 mm<sup>2</sup> (AWG 26).

The curves are given for a voltage drop of 1 V in the cable. For n volts tolerance, multiply the length determined from the graph by n.