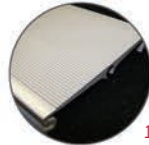
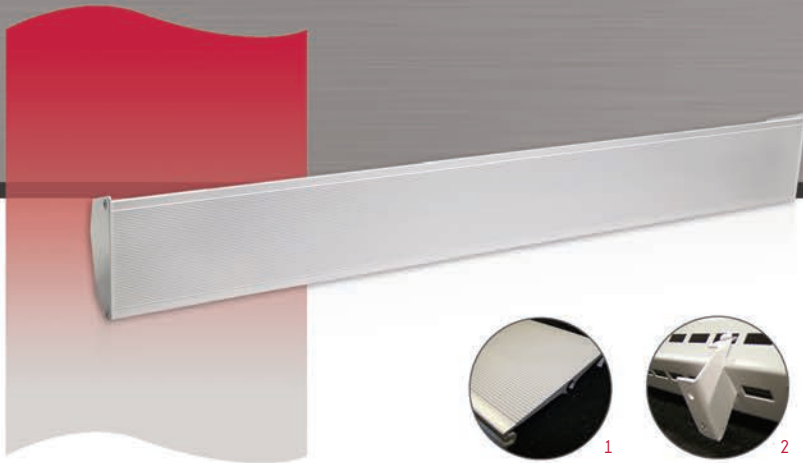


ORC Sunshine Radiant Cove Heater



Features

Color and Finish

- Standard: silichem off-white, mat black and anodized aluminum finish.

Voltage

- 120V, 208V, 240V, 277V, 347V, 480V, 600V 50/60 Hz.

Construction

- Front made of an aluminum extrusion profiled to increase radiating surface. ¹
- Back of the unit made with 18-gauge steel.
- Junction box on each end.
- Wall installation brackets (supplied) that doesn't require opening the unit's casing. KOE 7/8 in. (22 mm) for the installation of the BX wires. ²
- 4 in. (102 mm) ground wires on both ends. ³
- Wireway approved for interconnection of units using the factory installed additional wires. This is used in wall-to-wall heater installation. ³
- Highly-emissive paint on the heat exchanger for higher efficiency.

Heating element

- Stainless steel tubular heating element inserted into a solid aluminum extrusion preventing any thermal expansion noise.

Watt density

- 150W/ft. (491W/m).

Control

- Single or double-pole built-in thermostat available.

Quellet highly recommends to use an electronic wall thermostat for greater comfort.

Installation

- 6 ft. (1.83 m) minimum clearance to floor and 4 1/2 in. (114 mm) minimum from ceiling.
- Variety of accessories available for wall-to-wall installation.

Warranty

- 1-year warranty against defects.
- 10-year warranty on the heating element.

Application

- Entrance way, bathroom, kitchen, living room, family room, bedroom, patio door, bay window, daycare, nursery, workshop.

Models

Watts	Product #			Product #		Length		Weight	
	120V	208V	240V	347V	600V	in.	mm	lb	kg
450	ORC0452	ORC0458	ORC0450	ORC0457	-	34	864	6.0	2.7
600	ORC0602	ORC0608	ORC0600	ORC0607	-	47	1194	8.0	3.6
750	ORC0752	ORC0758	ORC0750	ORC0757	ORC0756	59	1499	10.0	4.5
900	ORC0902	ORC0908	ORC0900	ORC0907	ORC0906	71	1803	12.0	5.4
1050	ORC1052	ORC1058	ORC1050	ORC1057	ORC1056	83	2108	13.0	5.9
1200	ORC1202	ORC1208	ORC1200	ORC1207	ORC1206	94	2388	15.0	6.8
1500 ¹	ORC1502	ORC1508	ORC1500	ORC1507	ORC1506	113	2870	18.0	8.2

Options

Product #	Description	Factory Installed	Kit
ORC-JT	Splice plate	-	✓
ORC-TB6 ²	Single-pole bi-metal thermostat	✓	✓
ORC-TB26 ^{2,3}	Double-pole bi-metal thermostat	✓	✓

¹ These models must be ordered in pairs to reduce shipping damages.

² Quellet highly recommends to use an electronic wall thermostat for greater comfort.

³ "Off" position.

Add "BL" for silichem off-white, "NM" for mat black and "AA" for anodized aluminum finish. For options available as factory installed and kit, if not mentioned on the order, will automatically be shipped as a kit.

