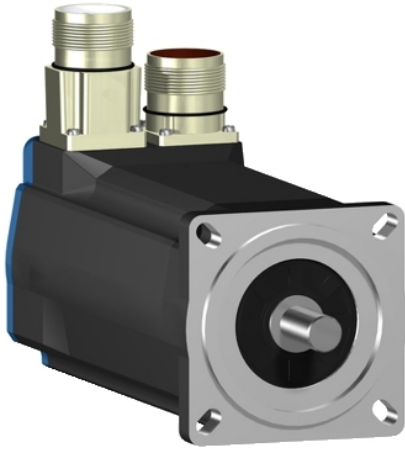


BSH0701T11F1A

AC servo motor BSH - 0.7 N.m - 8000 rpm -
keyed shaft - with brake - IP50



Main

Product or component type	Servo motor
Device short name	BSH
Maximum mechanical speed	8000 rpm
Continuous stall torque	<p>11.51 Lbf.In (1.3 N.m) LXM32.U90M2 3 A, 230 V, single phase</p> <p>12.39 Lbf.In (1.4 N.m) LXM05AD10M3X, 200...240 V, three phase</p> <p>12.39 Lbf.In (1.4 N.m) LXM05BD10M3X, 200...240 V, three phase</p> <p>12.39 Lbf.In (1.4 N.m) LXM05CD10M3X, 200...240 V, three phase</p> <p>12.39 Lbf.In (1.4 N.m) LXM15LD13M3, 230 V, single phase</p> <p>12.39 Lbf.In (1.4 N.m) LXM05AD10F1, 110...120 V, single phase</p> <p>12.39 Lbf.In (1.4 N.m) LXM05AD17M2, 200...240 V, single phase</p> <p>12.39 Lbf.In (1.4 N.m) LXM05BD10F1, 110...120 V, single phase</p> <p>12.39 Lbf.In (1.4 N.m) LXM05BD17M2, 200...240 V, single phase</p> <p>12.39 Lbf.In (1.4 N.m) LXM05CD10F1, 110...120 V, single phase</p> <p>12.39 Lbf.In (1.4 N.m) LXM05CD17M2, 200...240 V, single phase</p> <p>12.39 Lbf.In (1.4 N.m) LXM32.D18M2 6 A, 115 V, single phase</p> <p>6.20 Lbf.In (0.7 N.m) LXM15LU60N4, 400 V, three phase</p> <p>6.20 Lbf.In (0.7 N.m) LXM15LU60N4, 480 V, three phase</p> <p>8.05 Lbf.In (0.91 N.m) LXM15LU60N4, 230 V, three phase</p> <p>12.39 Lbf.In (1.4 N.m) LXM15LD10N4, 230 V, three phase</p> <p>12.39 Lbf.In (1.4 N.m) LXM15LD10N4, 400 V, three phase</p> <p>12.39 Lbf.In (1.4 N.m) LXM15LD10N4, 480 V, three phase</p> <p>12.39 Lbf.In (1.4 N.m) LXM15LD13M3, 230 V, three phase</p> <p>12.39 Lbf.In (1.4 N.m) LXM15LD21M3, 230 V, three phase</p> <p>12.39 Lbf.In (1.4 N.m) LXM05AD17M3X, 200...240 V, three phase</p> <p>12.39 Lbf.In (1.4 N.m) LXM05BD17M3X, 200...240 V, three phase</p> <p>12.39 lbf.in (1.4 N.m) LXM05CD17M3X, 200...240 V, three phase</p>

Peak stall torque	<p>30.98 Lbf.In (3.5 N.m) LXM32.U90M2 3 A, 230 V, single phase</p> <p>28.23 Lbf.In (3.19 N.m) LXM15LD13M3, 230 V, single phase</p> <p>21.42 Lbf.In (2.42 N.m) LXM05AD10F1, 110...120 V, single phase</p> <p>28.23 Lbf.In (3.19 N.m) LXM05AD17M2, 200...240 V, single phase</p> <p>21.42 Lbf.In (2.42 N.m) LXM05BD10F1, 110...120 V, single phase</p> <p>28.23 Lbf.In (3.19 N.m) LXM05BD17M2, 200...240 V, single phase</p> <p>21.42 Lbf.In (2.42 N.m) LXM05CD10F1, 110...120 V, single phase</p> <p>28.23 Lbf.In (3.19 N.m) LXM05CD17M2, 200...240 V, single phase</p> <p>30.98 Lbf.In (3.5 N.m) LXM32.D18M2 6 A, 115 V, single phase</p> <p>16.82 Lbf.In (1.9 N.m) LXM15LU60N4, 400 V, three phase</p> <p>16.82 Lbf.In (1.9 N.m) LXM15LU60N4, 480 V, three phase</p> <p>16.82 Lbf.In (1.9 N.m) LXM15LU60N4, 230 V, three phase</p> <p>25.76 Lbf.In (2.91 N.m) LXM15LD10N4, 230 V, three phase</p> <p>25.76 Lbf.In (2.91 N.m) LXM15LD10N4, 400 V, three phase</p> <p>25.76 Lbf.In (2.91 N.m) LXM15LD10N4, 480 V, three phase</p> <p>28.23 Lbf.In (3.19 N.m) LXM15LD13M3, 230 V, three phase</p> <p>28.23 Lbf.In (3.19 N.m) LXM15LD21M3, 230 V, three phase</p> <p>21.42 Lbf.In (2.42 N.m) LXM05AD10M3X, 200...240 V, three phase</p> <p>28.23 Lbf.In (3.19 N.m) LXM05AD17M3X, 200...240 V, three phase</p> <p>21.42 Lbf.In (2.42 N.m) LXM05BD10M3X, 200...240 V, three phase</p> <p>28.23 Lbf.In (3.19 N.m) LXM05BD17M3X, 200...240 V, three phase</p> <p>21.42 Lbf.In (2.42 N.m) LXM05CD10M3X, 200...240 V, three phase</p> <p>28.23 lbf.in (3.19 N.m) LXM05CD17M3X, 200...240 V, three phase</p>
Nominal output power	<p>500 W LXM32.U90M2 3 A, 230 V, single phase</p> <p>350 W LXM32.D18M2 6 A, 115 V, single phase</p> <p>400 W LXM05AD10M3X, 200...240 V, three phase</p> <p>400 W LXM05BD10M3X, 200...240 V, three phase</p> <p>400 W LXM05CD10M3X, 200...240 V, three phase</p> <p>380 W LXM05AD10F1, 110...120 V, single phase</p> <p>380 W LXM05BD10F1, 110...120 V, single phase</p> <p>380 W LXM05CD10F1, 110...120 V, single phase</p> <p>400 W LXM05AD17M2, 200...240 V, single phase</p> <p>400 W LXM05BD17M2, 200...240 V, single phase</p> <p>400 W LXM05CD17M2, 200...240 V, single phase</p> <p>654 W LXM15LD13M3, 230 V, single phase</p> <p>1000 W LXM15LD10N4, 400 V, three phase</p> <p>1000 W LXM15LD10N4, 480 V, three phase</p> <p>400 W LXM05AD17M3X, 200...240 V, three phase</p> <p>400 W LXM05BD17M3X, 200...240 V, three phase</p> <p>400 W LXM05CD17M3X, 200...240 V, three phase</p> <p>440 W LXM15LU60N4, 230 V, three phase</p> <p>564 W LXM15LD10N4, 230 V, three phase</p> <p>586 W LXM15LU60N4, 400 V, three phase</p> <p>586 W LXM15LU60N4, 480 V, three phase</p> <p>654 W LXM15LD13M3, 230 V, three phase</p> <p>654 W LXM15LD21M3, 230 V, three phase</p>

Nominal torque	<p>8.32 Lbf.In (0.94 N.m) LXM32.U90M2 3 A, 230 V, single phase</p> <p>11.06 Lbf.In (1.25 N.m) LXM15LD13M3, 230 V, single phase</p> <p>12.04 Lbf.In (1.36 N.m) LXM32.D18M2 6 A, 115 V, single phase</p> <p>6.20 Lbf.In (0.7 N.m) LXM15LU60N4, 230 V, three phase</p> <p>6.20 Lbf.In (0.7 N.m) LXM15LU60N4, 400 V, three phase</p> <p>6.20 Lbf.In (0.7 N.m) LXM15LU60N4, 480 V, three phase</p> <p>10.89 Lbf.In (1.23 N.m) LXM15LD10N4, 400 V, three phase</p> <p>10.89 Lbf.In (1.23 N.m) LXM15LD10N4, 480 V, three phase</p> <p>11.06 Lbf.In (1.25 N.m) LXM15LD10N4, 230 V, three phase</p> <p>11.06 Lbf.In (1.25 N.m) LXM15LD13M3, 230 V, three phase</p> <p>11.06 lbf.in (1.25 N.m) LXM15LD21M3, 230 V, three phase</p>
Nominal speed	<p>5000 rpm LXM32.U90M2 3 A, 230 V, single phase</p> <p>3000 rpm LXM05AD10F1, 110...120 V, single phase</p> <p>3000 rpm LXM05BD10F1, 110...120 V, single phase</p> <p>3000 rpm LXM05CD10F1, 110...120 V, single phase</p> <p>3000 rpm LXM05AD10M3X, 200...240 V, three phase</p> <p>3000 rpm LXM05BD10M3X, 200...240 V, three phase</p> <p>3000 rpm LXM05CD10M3X, 200...240 V, three phase</p> <p>8000 rpm LXM15LD10N4, 400 V, three phase</p> <p>3000 rpm LXM05AD17M2, 200...240 V, single phase</p> <p>3000 rpm LXM05BD17M2, 200...240 V, single phase</p> <p>3000 rpm LXM05CD17M2, 200...240 V, single phase</p> <p>3000 rpm LXM05AD17M3X, 200...240 V, three phase</p> <p>3000 rpm LXM05BD17M3X, 200...240 V, three phase</p> <p>3000 rpm LXM05CD17M3X, 200...240 V, three phase</p> <p>5000 rpm LXM15LD13M3, 230 V, single phase</p> <p>2500 rpm LXM32.D18M2 6 A, 115 V, single phase</p> <p>5000 rpm LXM15LD10N4, 230 V, three phase</p> <p>5000 rpm LXM15LD13M3, 230 V, three phase</p> <p>5000 rpm LXM15LD21M3, 230 V, three phase</p> <p>6000 rpm LXM15LU60N4, 230 V, three phase</p> <p>8000 rpm LXM15LD10N4, 480 V, three phase</p> <p>8000 rpm LXM15LU60N4, 400 V, three phase</p> <p>8000 rpm LXM15LU60N4, 480 V, three phase</p>
Product compatibility	<p>LXM05AD10F1 110...120 V single phase</p> <p>LXM05AD17M2 200...240 V single phase</p> <p>LXM05BD10F1 110...120 V single phase</p> <p>LXM05BD17M2 200...240 V single phase</p> <p>LXM05CD10F1 110...120 V single phase</p> <p>LXM05CD17M2 200...240 V single phase</p> <p>LXM15LD13M3 230 V single phase</p> <p>LXM32.U90M2 230 V single phase</p> <p>LXM32.D18M2 115 V single phase</p> <p>LXM15LU60N4 230 V three phase</p> <p>LXM05AD10M3X 200...240 V three phase</p> <p>LXM05BD10M3X 200...240 V three phase</p> <p>LXM05CD10M3X 200...240 V three phase</p> <p>LXM15LD13M3 230 V three phase</p> <p>LXM15LU60N4 400 V three phase</p> <p>LXM15LU60N4 480 V three phase</p> <p>LXM15LD10N4 400 V three phase</p> <p>LXM05AD17M3X 200...240 V three phase</p> <p>LXM05BD17M3X 200...240 V three phase</p> <p>LXM05CD17M3X 200...240 V three phase</p> <p>LXM15LD10N4 230 V three phase</p> <p>LXM15LD10N4 480 V three phase</p> <p>LXM15LD21M3 230 V three phase</p>
Shaft end	Keyed
IP degree of protection	IP50 standard

Speed feedback resolution	131072 points/turn
Holding brake	With
Mounting support	International standard flange
Electrical connection	Straight connectors

Complementary

Range compatibility	Lexium 05 Lexium 15 Lexium 32
Supply voltage max	480 V
Phase	Three phase
Continuous stall current	3.2 A
Maximum continuous power	1.06 W
Maximum current Irms	10 A LXM32.D18M2 9 A LXM32.U90M2 9.9 A LXM15LD13M3 9.9 A LXM15LD21M3 9.9 A LXM15LU60N4 9.9 A LXM15LD10N4
Maximum permanent current	10.1 A
Switching frequency	8 kHz
Second shaft	Without second shaft end
Shaft diameter	0.43 in (11 mm)
Shaft length	0.91 in (23 mm)
Key width	0.71 in (18 mm)
Feedback type	Single turn SinCos Hiperface
Holding torque	17.70 lbf.in (2 N.m) holding brake
Motor flange size	2.76 in (70 mm)
Number of motor stacks	1
Torque constant	0.44 N.m/A 248 °F (120 °C)
Back emf constant	26 V/krpm 248 °F (120 °C)
Number of motor poles	6
Rotor inertia	0.322 kg.cm ²
Stator resistance	3.3 Ohm 68 °F (20 °C)
Stator inductance	12.3 mH 68 °F (20 °C)
Stator electrical time constant	3.73 ms 68 °F (20 °C)
Maximum radial force Fr	360 N 6000 rpm 380 N 5000 rpm 410 N 4000 rpm 460 N 3000 rpm 520 N 2000 rpm 660 N 1000 rpm
Maximum axial force Fa	0.2 x Fr
Brake pull-in power	10 W
Type of cooling	Natural convection
Length	7.07 in (179.5 mm)
Centring collar diameter	2.36 in (60 mm)
Centring collar depth	0.10 in (2.5 mm)
Number of mounting holes	4
Mounting holes diameter	0.22 in (5.5 mm)
Circle diameter of the mounting holes	3.23 in (82 mm)
Net weight	5.07 lb(US) (2.3 kg)

Ordering and shipping details

Category	18282 - LEXIUM 32 MOTORS
Discount Schedule	PC53
GTIN	03389118135963
Nbr. of units in pkg.	1
Package weight(Lbs)	5.6 lb(US) (2.54 kg)
Returnability	No
Country of origin	DE

Packing Units

Unit Type of Package 1	PCE
Package 1 Height	4.84 in (12.3 cm)
Package 1 width	5.04 in (12.8 cm)
Package 1 Length	14.84 in (37.7 cm)

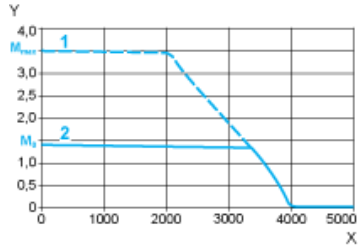
Contractual warranty

Warranty	18 months
----------	-----------

115 V Single-Phase Supply Voltage

Torque/Speed Curves

Servo motor with LXM32-D18M2 servo drive

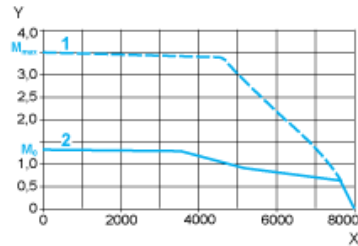


- X Speed in rpm
- Y Torque in Nm
- 1 Peak torque
- 2 Continuous torque

230 V Single-Phase Supply Voltage

Torque/Speed Curves

Servo motor with LXM32-U90M2 servo drive



- X Speed in rpm
- Y Torque in Nm
- 1 Peak torque
- 2 Continuous torque