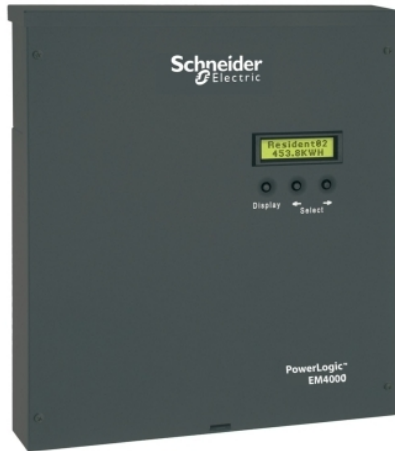


METSEEM408016

EM4000 multi-circuit energy meter, 24 x 80 mA inputs, 120V control power 60 Hz



Main

Range	PowerLogic
Product or Component Type	Multi-circuit energy meter
Product name	PowerLogic EM4000
Device short name	EM4080
Power monitoring	Basic instrumentation
Energy management	Sub billing and cost allocation Billing analysis
Device Application	Sub billing
Power quality analysis	Compliance monitoring
Type of measurement	Current per phase, rms Voltage per phase, rms Negative reactive energy Apparent energy Pulse count Active and reactive power Apparent power Positive active energy Positive reactive energy Negative active energy
[Us] rated supply voltage	120 V AC 60 Hz
Network Frequency	60 Hz

Complementary

Sampling rate	256 samples/cycle
Display Type	Backlit LCD
Messages display capacity	2 lines of 16 characters
Current transformer input	Solid core CT 80 mA24 x single pole Solid core CT 80 mA12 x single phase Solid core CT 80 mA8 x three phase
Measurement voltage	80...480 V without PTs 480...999000 V with external PTs
Measurement accuracy	+/- 0.5 % of the measuring range
Number of inputs	2 pulse
Communication port protocol	BACnet IP FTP HTTP Modbus TCP/IP SNTP
Communication port support	RJ45 ETHERNET RS485
Communication of data	Negative active energy Positive active energy Voltage Positive reactive energy Apparent energy Negative reactive energy

The information provided in this documentation contains general descriptions and/or technical characteristics of the performance of the products contained herein. This documentation is not intended as a substitute for and is not to be used for determining suitability or reliability of these products for specific user applications. It is the duty of any such user or integrator to perform the appropriate and complete risk analysis, evaluation and testing of the products with respect to the relevant specific application or use thereof. Neither Schneider Electric Industries SAS nor any of its affiliates or subsidiaries shall be responsible or liable for misuse of the information contained herein.

Environment

Mounting Mode	Wall mount
Device mounting	Wall mounted
Enclosure type	NEMA type 1
Type of Installation	Enclosed outdoor Indoor installation
Relative humidity	90 % 104 °F (40 °C)
Pollution degree	2
Ambient air temperature for operation	-40...158 °F (-40...70 °C)
Ambient Air Temperature for Storage	-40...158 °F (-40...70 °C)
Operating altitude	<= 9842.52 ft (3000 m)
Standards	IEC 6100-4-5 ICES-003 FCC Part 15 class B CSA C22.2 No 61010-1 EN 55022 ANSI/TIA-968-A : 2002 CSA C22.2 No 61010-1-4
Product certifications	UL
Width	12.01 in (30.5 cm)
Depth	2.17 in (5.5 cm)
Height	13.19 in (33.5 cm)
Net Weight	8.82 lb(US) (4 kg)

Ordering and shipping details

Category	09796-POWERLOGIC EM40/48 HARDWARE
Discount Schedule	PL1
Returnability	No
Country of origin	CA

Packing Units

Unit Type of Package 1	PCE
Number of Units in Package 1	1
Package 1 Height	13.19 in (33.5 cm)
Package 1 Width	12.01 in (30.5 cm)
Package 1 Length	2.17 in (5.5 cm)
Package 1 Weight	3.50 lb(US) (1.588 kg)

Offer Sustainability

California proposition 65	WARNING: This product can expose you to chemicals including: Lead and lead compounds, which is known to the State of California to cause cancer and birth defects or other reproductive harm. For more information go to www.P65Warnings.ca.gov
REACH Regulation	 REACH Declaration
REACH free of SVHC	Yes
EU RoHS Directive	Compliant  EU RoHS Declaration
Toxic heavy metal free	Yes
Mercury free	Yes
China RoHS Regulation	 China RoHS Declaration
RoHS exemption information	 Yes
WEEE	The product must be disposed on European Union markets following specific waste collection and never end up in rubbish bins.