

ACT20-FEED-IN-PRO-S

Weidmüller Interface GmbH & Co. KG
Klingenbergstraße 26
D-32758 Detmold
Germany

www.weidmueller.com

Product image



Power supply adapter modules for separate supply and distribution of the supply voltage: for the ACT20 series/MICROSERIES signal converters.

The 22.5/6.1 mm wide power-feed modules are mounted directly adjacent to the analogue signal converters. Then the 24 VDC supply voltage is optionally bridged via the CH20M (ACT20-series) rail bus or simply bridged over using the pluggable ZQV 4N (MICROSERIES) cross-connectors.

The ACT20-Feed-In-PRO-S can also detect faults coming from any of the devices mounted on the CH20 bus mounting profile.

In the event of an error or fault, the integrated status relay sends a common alarm to the external controller. In addition, two power supply units (as primary and backup supply) can be connected to the ACT20 Feed-In PRO-S. Two feed-in modules mounted to the CH20 bus mounting profile guarantee a 100% redundant power supply.

Three LEDs are used to show the status of the power supply and error messages.

The ACT20M-Feed-In PRO can also be used in Ex zone2 / Division2 applications.

General ordering data

Version	Supply module, Distributes supply voltage to rail bus, Optional connection of backup supply
Order No.	8965500000
Type	ACT20-FEED-IN-PRO-S
GTIN (EAN)	4032248785117
Qty.	1 pc(s).

ACT20-FEED-IN-PRO-S

Weidmüller Interface GmbH & Co. KG

Klingenbergstraße 26

D-32758 Detmold

Germany

www.weidmueller.com

Technical data

Dimensions and weights

Depth	113.6 mm	Depth (inches)	4.472 inch
Height	117.2 mm	Height (inches)	4.614 inch
Width	22.5 mm	Width (inches)	0.886 inch
Net weight	173 g		

Temperatures

Storage temperature	-20 °C...85 °C	Ambient temperature	-20...+60 °C
Humidity	40 °C / 95 % rel. humidity, no condensation		

Probability of failure

SIL in compliance with IEC 61508	None
----------------------------------	------

Input

Backup power supply	21.6...26.4 V DC	Input current	max. 4 A
Input voltage	21.6...26.4 V DC	Number of inputs	2
Supply voltage (input)	21.6...26.4 V DC	Trigger level for the power supply	Fault <21 V DC

Output

Number of outputs	1	Output current	Equivalent to input current, max. 4 A
Output power	96 W	Output voltage, note	Input voltage -0.5 V DC / 4 A
Supply voltage (output)	24 V DC		

Output (digital)

AC power, max.	500 VA / 60 W	Alarm function	Device error, Failure of power supply, backup power supply
Continuous current	2 A	Max. switching voltage, AC	250 V
Type	Relay, 1 CO contact		

General data

Configuration	none	Power consumption	<2 W
Protection degree	IP20	Rail	TS 35, CH20M Bus
Voltage supply	21.6...26.4 V DC		

Insulation coordination

EMC standards	EN 61326-1
---------------	------------

Connection data

Type of connection	Screw connection	Tightening torque, min.	0.4 Nm
Tightening torque, max.	0.6 Nm	Clamping range, rated connection	2.5 mm ²
Clamping range, min.	0.5 mm ²	Clamping range, max.	2.5 mm ²
Wire connection cross section AWG, min.	AWG 30	Wire connection cross section AWG, max.	AWG 14

Creation date November 26, 2024 12:27:22 PM CET

Catalogue status 26.11.2024 / We reserve the right to make technical changes.

ACT20-FEED-IN-PRO-S**Weidmüller Interface GmbH & Co. KG**

Klingenbergstraße 26

D-32758 Detmold

Germany

www.weidmueller.com

Technical data**Classifications**

ETIM 6.0	EC001600	ETIM 7.0	EC001600
ETIM 8.0	EC001600	ETIM 9.0	EC001600
ECLASS 9.0	27-24-26-10	ECLASS 9.1	27-24-26-10
ECLASS 10.0	27-24-26-10	ECLASS 11.0	27-24-26-10
ECLASS 12.0	27-24-26-10	ECLASS 13.0	27-24-26-10
ECLASS 14.0	27-24-26-10		

Environmental Product Compliance

RoHS Compliance Status	Compliant with exemption
RoHS Exemption (if applicable/known)	7a, 7cl
REACH SVHC	Lead 7439-92-1
SCIP	2f6dd957-421a-46db-a0c2-cf1609156924

Important note

Product information	<p>The power-feed unit ACT20-FEED-IN-PRO-S distributes the supply voltage for the ACT20 range of devices to the Weidmüller CH20M DIN rail bus. The device also has a connection for a backup power supply. Installation is basically on the Weidmüller CH20M DIN rail bus.</p> <p>Properties</p> <ul style="list-style-type: none"> • The power-feed unit ACT20-FEED-IN-PRO-S detects errors on each of the devices mounted on the Weidmüller CH20M DIN rail and sends a collective message to an external controller via the internal status relay. • Two power supplies for the primary and secondary supply (backup) can be optionally connected. • A redundant power supply can be set up using two power-feed units and two separate power supplies. • The status relay is activated when the following conditions are met: ◊ The supply voltage is on the connection terminals 51 and 52 ◊ The backup supply voltage is on the terminals 53 and 54. If the backup power supply is not required, the supplied jumper needs to be inserted between terminals 52 and 53. ◊ The devices mounted on the Weidmüller DIN rail do not report any errors • The device can be used in safe (non-explosive risk) areas or in Zone 2 / Division 2. • The operating status of the power supply and the backup power supply is indicated with two green LEDs. • A malfunction is indicated with a red LED.
---------------------	---

Approvals

Approvals



ROHS	Conform
UL File Number Search	UL Website
Certificate no. (cULus)	E337701

Downloads

Approval/Certificate/Document of Conformity	Application notes – Certification ATEX Library and function block – Certification IECEx Application notes – Certification UL UL certification for canada Application notes – Declaration of Conformity
Engineering Data	CAD data – STEP
User Documentation	Device description – Instruction sheet
Catalogues	Catalogues in PDF-format
Brochures	

Creation date November 26, 2024 12:27:22 PM CET

Catalogue status 26.11.2024 / We reserve the right to make technical changes.

3

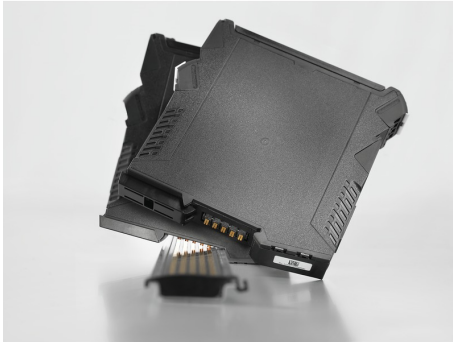
ACT20-FEED-IN-PRO-S

Weidmüller Interface GmbH & Co. KG
 Klingenbergstraße 26
 D-32758 Detmold
 Germany

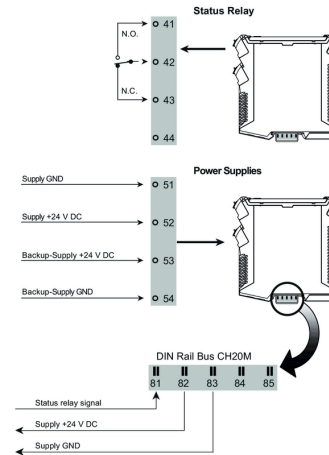
www.weidmueller.com

Drawings

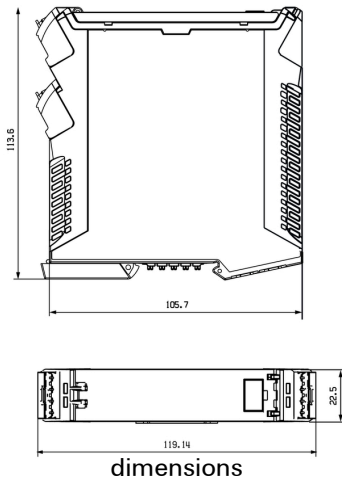
Connection diagram



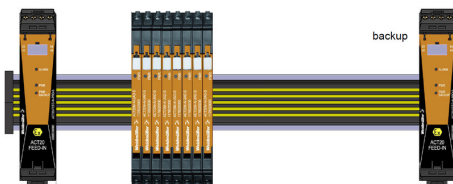
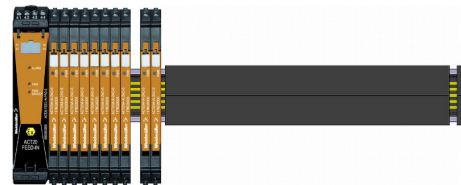
application example



Dimensioned drawing



dimensions



backup