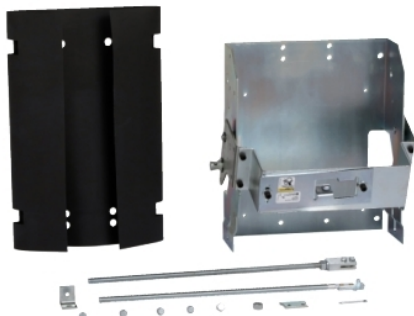


# Product data sheet

## Characteristics

# 9422RM1

Operating mechanism, PowerPacT M/P, variable depth, 800/1200A, 3 pole, operator only



### Main

Range	9422R
Product	Circuit Breaker Mechanism
Mounting Type	Flange rod variable depth
Certifications	CSA[RETURN]UL Recognized
Circuit Breaker Type	PowerPact M or P 3
Handle Type	Ordered separately

### Ordering and shipping details

Category	21732-9422
Discount Schedule	CP1
GTIN	785901958673
Returnability	Yes
Country of origin	MX

### Packing Units

Unit Type of Package 1	PCE
Number of Units in Package 1	1
Package 1 Height	9.02 in (22.9 cm)
Package 1 Width	14.69 in (37.3 cm)
Package 1 Length	24.02 in (61.0 cm)
Package 1 Weight	14.31 lb(US) (6.49 kg)

### Offer Sustainability

California proposition 65	WARNING: This product can expose you to chemicals including: Lead and lead compounds, which is known to the State of California to cause cancer and birth defects or other reproductive harm. For more information go to <a href="http://www.P65Warnings.ca.gov">www.P65Warnings.ca.gov</a>
REACH Regulation	<a href="#">REACH Declaration</a>
EU RoHS Directive	Compliant with Exemptions
Mercury free	Yes
China RoHS Regulation	<a href="#">China RoHS Declaration</a>
RoHS exemption information	<a href="#">Yes</a>
PVC free	Yes

### Contractual warranty

Warranty	18 months
----------	-----------