



LED High Intensity

Our high intensity LED lamps are an easy, cost saving retrofit solution that can replace up to 400 W HID lamps. With different color temperatures, wattages and base options, they are the perfect replacement for HID lamps. These LED retrofits are ideal for many applications such as churches, area lighting and industrial lighting.

No need for a time consuming fixture replacement, simply bypass the ballast and screw the lamp in. The ballast bypass is the best option for long term installations since it prevents the need to go back and replace the ballast at a later time, making it ideal for hard to reach spaces.



Durable heat sink design with silent integrated fan and safety cable included

Order code	Description	Watts (W)	Base	Volts (VAC)	Color temp. (K)	CRI	Life L70 (hrs)	Lumen output (lm)	Bare lamp lumen (lm)	Operating position	Case qty (master)
High Bay Retrofit 100-277 V											
67048 ¹	CRNHB/150W/40K/BYP/100-277/ND/EX39/STD	150	EX39	100-277	4 000	80	50 000	17 195	21 000	Vertical	4
67049 ¹	CRNHB/150W/50K/BYP/100-277/ND/EX39/STD	150	EX39	100-277	5 000	80	50 000	17 929	21 000	Vertical	4

Lumen values are derived from photometric testing
For a complete list of compatible ballasts and DLC qualified products, please visit www.standardpro.com

¹ A safety cable is included with this lamp to secure its installation in the fixture
Make sure to use this cable when installing the lamp to prevent the lamp from falling down
² These products comply with UL1598C Standard for LED luminaire Retrofit kits



dry location



enclosed fixture



non dimmable



LED chips mounted on top for a 360° light output



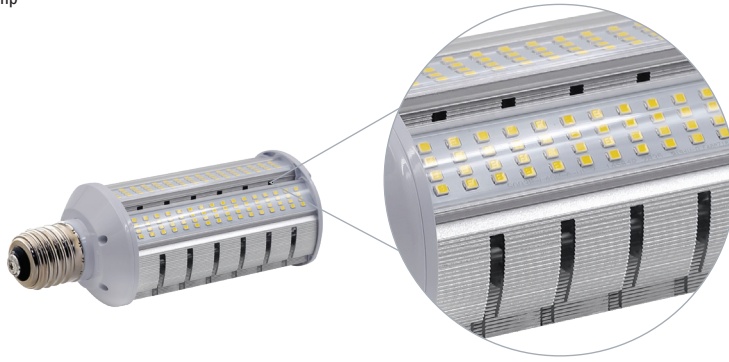
Order code	Description	Watts (W)	Base	Volts (VAC)	Color temp. (K)	CRI	Life L70 (hrs)	Lumen output (lm)	Operating position	Case qty (master)
360° 120-277 V										
67794 ¹	CRN/S2/22W/30K/BYP/120-277/ND/E26/STD	22	E26	120-277	3 000	80	50 000	2 579	Vertical	24
67795 ¹	CRN/S2/22W/40K/BYP/120-277/ND/E26/STD	22	E26	120-277	4 000	80	50 000	2 812	Vertical	24
67796	CRN/S2/22W/50K/BYP/120-277/ND/E26/STD	22	E26	120-277	5 000	80	50 000	2 668	Vertical	24
65045 ¹	LED/CRN/36W/30K/ND/BYP/120-277/STD	36	E26	120-277	3 000	84	50 000	4 016	Vertical	12
66003 ¹	LED/CRN/36W/40K/ND/BYP/120-277/STD	36	E26	120-277	4 000	84	50 000	4 414	Vertical	12
65046 ¹	LED/CRN/36W/50K/ND/BYP/120-277/STD	36	E26	120-277	5 000	83	50 000	4 495	Vertical	12
67736	CRN/S2/36W/30K/BYP/120-277/ND/E26/STD	26	E26	120-277	3 000	80	50 000	4 860	Vertical	12
67739 ¹	CRN/S2/54W/40K/BYP/120-277/ND/E39/STD	54	E39	120-277	4 000	80	50 000	7 560	Vertical	12
65047 ²	LED/CRN/120W/40K/ND/BYP/E39/120-277/STD	120	E39	120-277	4 000	84	50 000	14 570	Vertical	4
67741	CRN/S2/120W/40K/BYP/120-277/ND/E39/STD	120	E26	120-277	4 000	80	50 000	16 800	Vertical	6
360° 120-347 V										
67924	CRN/S3/36W/40K/BYP/120-347/ND/E26/STD	36	E26	120-347	4 000	80	50 000	5 200	Vertical	12
67925	CRN/S3/36W/50K/BYP/120-347/ND/E26/STD	36	E26	120-347	5 000	80	50 000	5 200	Vertical	12
67926	CRN/S3/54W/40K/BYP/120-347/ND/E39/STD	54	E39	120-347	4 000	80	50 000	7 800	Vertical	12
67927	CRN/S3/54W/50K/BYP/120-347/ND/E39/STD	54	E39	120-347	5 000	80	50 000	7 800	Vertical	12
67930	CRN/S3/120W/40K/BYP/120-347/ND/E39/STD	120	E39	120-347	4 000	80	50 000	16 800	Vertical	6
67931	CRN/S3/120W/50K/BYP/120-347/ND/E39/STD	120	E39	120-347	5 000	80	50 000	16 800	Vertical	6
360° 200-347 V										
67050 ²	CRN/100W/40K/BYP/200-347V/ND/EX39/STD	100	EX39	200-347	4 000	80	50 000	9 900	Vertical	6

Lumen values are derived from photometric testing
For a complete list of compatible ballasts and DLC qualified products, please visit www.standardpro.com

¹ Not DLC

² A safety cable is included with this lamp to secure its installation in the fixture. Make sure to use this cable when installing the lamp to prevent the lamp from falling down.
³ These products comply with UL1598C Standard for LED Luminaire Retrofit kits





Heat sink designed for optimized heat dissipation

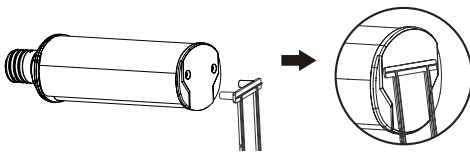


40 W - E26

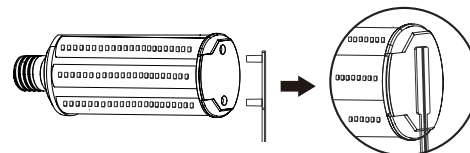
40 W - E39

60 W

Order code	Description	Watts (W)	Base	Volts (VAC)	Color temp. (K)	CRI	Life L70 (hrs)	Lumen output (lm)	Bare lamp lumen (lm)	Operating position	Case qty (master)
180° 100-277 V											
67052 ^{1,2}	CRN180/40W/40K/BYP/100-277V/ND/E26/STD	40	E26	100-277	4 000	80	50 000	3 706	6 000	Horizontal	12
67053 ²	CRN180/40W/40K/BYP/100-277V/ND/E39/STD	40	E39	100-277	4 000	80	50 000	3 706	6 000	Horizontal	12
67054 ²	CRN180/60W/40K/BYP/100-277V/ND/E39/STD	60	E39	100-277	4 000	80	50 000	5 658	9 000	Horizontal	12



Face down installation



Face out installation

Traditional Equivalent

LED	CFL	Incandescent	HID
22 W	32 W - 40 W	150 W - 200 W	50 W - 75 W
36 W - 40 W	55 W - 65 W	300 W	100 W - 150 W
54 W - 60 W	85 W - 105 W	500 W	150 W - 200 W
100 W	-	-	200 W - 250 W
120 W	-	-	250 W
150 W	-	-	400 W

Accessories

Order code	Description
10985	Mogul to Medium socket adaptor
10587	Mogul to Mogul socket extension

Lumen values are derived from photometric testing. For a complete list of compatible ballasts and DLC qualified products, please visit www.standardpro.com

¹ Not DLC
² Two lamp support accessories are included with this lamp to reduce weight on the socket and secure its installation in the fixture
³ These products comply with UL1598C Standard for LED Luminaire Retrofit Kits



damp location



enclosed fixture



non dimmable

