

BMP®51 and BMP®53 Label Makers

www.BradyID.com/bmp51

Portable Label Printers



BMP®51
LABEL MAKER

BMP®53
LABEL MAKER



View Online!



Visit www.BradyID.com/bmp51 or scan this code for more information on the BMP51 and BMP53 label printers.

Your Complete Printing Solution:

BMP51 & BMP53 cartridges with material and print ribbonPage 26

Made to get the job done.

Helps you get the job done faster, easier and with confidence. This labeler has the versatility, print capabilities and convenience to help you tackle your toughest labeling jobs in a snap.

- Fast print speed. Prints 1 inch per second!
- Material recognition and automatic label formatting
- Built-in Bluetooth® technology or optional Wi-Fi card for wireless printing via a network
- Large, graphical display with backlight
- Durable built-in cutter with label retention
- Software compatibility for advanced label design
- Continuous and die-cut label materials available
- More than 20 material types and over 190 label parts
- Prints labels up to 1.5" wide (or continuous labels up to 40"!)
- Tough, durable label materials that won't fade, smear or fall off
- Ribbon and label materials in one easy to load cartridge

Don't need the keyboard or screen?

Check out the BMP@53 Label Maker - many of the same features as the BMP@51 Label Maker, minus the display screen and keyboard.

- Create labels with LabelMark™ or CodeSoft™ Software, or using a Brady Mobile App on your smart phone
- Use the same label cartridges as BMP51

BMP@51 & BMP@53 Label Printer Parts

Catalog #	Description
75447314707	BMP@51 Printer with AC Adaptor*
75447314703	BMP@51 Printer, Rechargeable Li-Ion Battery Pack and AC Adaptor/Battery Charger*
75447314705	BMP@51 Printer, LabelMark™ 5 Software and AC Adaptor*
75447314708	BMP@53 Peripheral Printer with AC Adaptor*
75447314704	BMP@53 Printer, Rechargeable Li-Ion Battery Pack and AC Adaptor/Battery Charger*
75447314706	BMP@53 Printer, LabelMark™ 5 Software and AC

* Printer ships with Hard Carrying Case, Battery Tray for AA batteries, USB Cable, Drivers CD, Product CD, Quick Start Guide, and one MC-1500-595-WT-BK.

Patents applied for: 6,732,619 and 7,070,347 on the BMP@51 and BMP@53 Label Makers 6,929,415 on the PermaSleeve® cartridges

Accessories

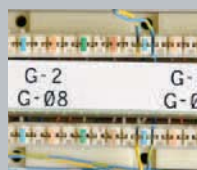
Catalog #	Description
M50-MAGNET	BMP@50 Series Magnet Accessory
BMP-UBP	Lithium Ion Rechargeable Battery Pack for Mobile Printers
BMP-UBP-AC	Lithium Ion Rechargeable Battery Pack with AC Adaptor/Battery Charger
NET-WIFI	Brady Network Card - Bluetooth and WIFI
NET-LAN	Brady Network Card - Ethernet only
NET-BT-WIFI-LAN	Brady Network Card - Bluetooth/WIFI/Ethernet
M50-HC	BMP@50 Series Hard Carrying Case
M50-SC	BMP@50 Series Soft Carrying Case
M50-AC	BMP@50 Series AC Adaptor/Battery Charger
M50-CABLE	BMP@50 Series USB Cable
M50-BATT-TRAY	BMP@50 Series Spare Battery Tray
LM5STDCCD	LabelMark™ 5 Standard Software - CD-ROM



Brady 360® Replacement Printer Plan supplements the Limited Warranty already included with your printer purchase. This Replacement Plan allows you can return your qualified printer for a replacement printer within the first 12 months of purchase. You must purchase the replacement program at the time of printer purchase in order to receive benefits.

*Printheads are covered. *Limit of two printers in the first 12 months of initial purchase.

Get the job done FASTER, EASIER and WITH CONFIDENCE.



Voice & Data Communications



PermaSleeve® Wire Marking Sleeves



Product Identification



Facility & Safety Identification



Laboratory Identification



General ID ...and many more!