



Product Description

The new TripleGrip™ is one of the most technologically advanced anchor on the market. Designed with 2 expandable wings that grip tightly behind drywall for maximum holding power. Advanced cam action technology expands inside drywall to give more stability and strength and 2 lateral wings that hold the anchor in place, preventing any rotation while the screw is inserted.

Features & Benefits

- ▶ Easy to install
- ▶ Superior holding power
- ▶ 2 expandable wings that grip tightly behind drywall
- ▶ 2 lateral wings hold the anchor in place
- ▶ Cam action expands inside drywall while inserted
- ▶ Available sizes: x-small, small, medium and large

Perfect for:

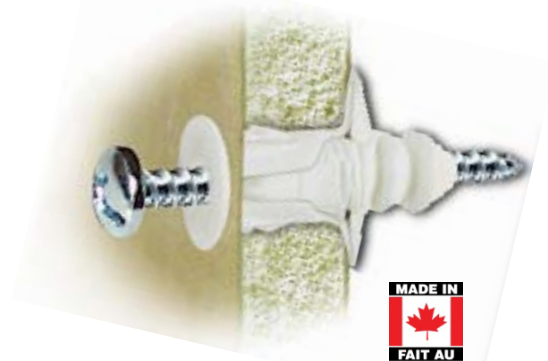


Curtain rod, towel bars, address, etc...

Packaging:



TripleGrip™



Product sizes & Materials

Polyethylene

- # 6 (Beige) - 3.5mm (yellow)
- # 8 (Grey) - 4mm (white)
- # 10 (Blue) - 5mm (blue)
- # 12 (Green) - 6mm (gray)

Suitable Base Materials


- ▶ Wallboard 10mm - Drywall 3/8
- ▶ Wallboard 13mm - Drywall 1/2
- ▶ Wallboard 16mm - Drywall 5/8
- ▶ Plaster
- ▶ Brick
- ▶ Concrete
- ▶ Ceramic tile

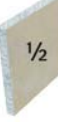



Universal Anchors




Load Capacities

Material	Size	Material	Drill Size	PULL MAX lbs	PULL SAFE lbs	SHEAR MAX lbs	SHEAR SAFE lbs	PULL MAX kg	PULL SAFE kg	SHEAR MAX kg	SHEAR SAFE kg
 Drywall 3/8 Wallboard 10 mm	# 6 (Beige) - 3.5mm	Polyethylene	1/4"	32	16	52	26	15	7	24	12
	# 8 (Grey) - 4mm	Polyethylene	1/4"	35	18	60	30	16	8	27	14
	# 10 (Blue) - 5mm	Polyethylene	5/16"	45	23	75	38	20	10	34	17
	# 12 (Green) - 6mm	Polyethylene	3/8"	60	30	90	45	27	14	41	20

Material	Size	Material	Drill Size	PULL MAX lbs	PULL SAFE lbs	SHEAR MAX lbs	SHEAR SAFE lbs	PULL MAX kg	PULL SAFE kg	SHEAR MAX kg	SHEAR SAFE kg
 Drywall 1/2 Wallboard 13 mm	# 6 (Beige) - 3.5mm	Polyethylene	1/4"	36	18	58	29	16	8	26	13
	# 8 (Grey) - 4mm	Polyethylene	1/4"	42	21	70	35	19	10	32	16
	# 10 (Blue) - 5mm	Polyethylene	5/16"	58	29	92	46	26	13	42	21
	# 12 (Green) - 6mm	Polyethylene	3/8"	74	37	121	61	34	17	55	27

Material	Size	Material	Drill Size	PULL MAX lbs	PULL SAFE lbs	SHEAR MAX lbs	SHEAR SAFE lbs	PULL MAX kg	PULL SAFE kg	SHEAR MAX kg	SHEAR SAFE kg
 Drywall 5/8 Wallboard 16 mm	# 6 (Beige) - 3.5mm	Polyethylene	1/4"	60	30	91	46	27	14	41	21
	# 8 (Grey) - 4mm	Polyethylene	1/4"	64	32	102	51	29	15	46	23
	# 10 (Blue) - 5mm	Polyethylene	5/16"	88	44	154	77	40	20	70	35
	# 12 (Green) - 6mm	Polyethylene	3/8"	132	66	204	102	60	30	93	46

Material	Size	Material	Drill Size	PULL MAX lbs	PULL SAFE lbs	SHEAR MAX lbs	SHEAR SAFE lbs	PULL MAX kg	PULL SAFE kg	SHEAR MAX kg	SHEAR SAFE kg
 Concrete 3000 PSI	# 6 (Beige) - 3.5mm	Polyethylene	1/4"	240	120	400	200	109	54	181	91
	# 8 (Grey) - 4mm	Polyethylene	1/4"	275	138	500	250	125	62	227	113
	# 10 (Blue) - 5mm	Polyethylene	5/16"	400	200	800	400	181	91	363	181
	# 12 (Green) - 6mm	Polyethylene	3/8"	500	250	900	450	227	113	408	204



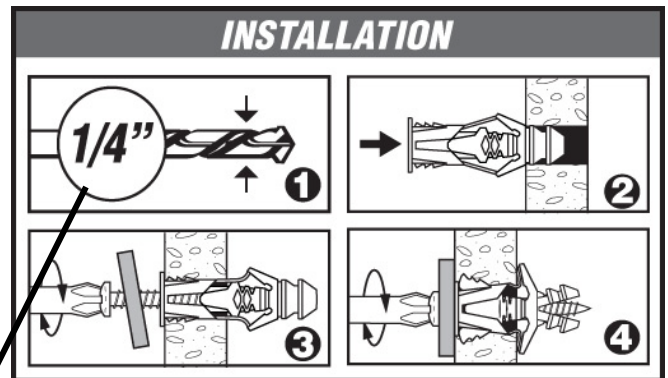
TripleGrip™

Tools required



Installation instructions

1. Drill the appropriate drill size hole into drywall / wallboard, brick or concrete.
2. Insert the TripleGrip™ into the hole.
3. Insert the screw through the object you need to affix and screw into the TripleGrip™.
4. Turn clockwise until a firm resistance.



Refer to grid for exact drill size

