

# EDS / EFS Series Control Stations

## DSD Cover and Device Sub-assemblies

Cl. I, Div. 1 & 2, Groups B\*, C, D†  
Cl. II, Div. 1, Groups E, F, G  
Cl. II, Div. 2, Groups F, G  
Cl. III  
NEMA 3, 7B\*CD, 9EFG

Explosionproof  
Dust-Ignitionproof  
Raintight  
Wet Locations

4C

For use with EDSCM modular control device bodies see page 519 and EDS/EDSC back boxes.

### Features:

- Large machine screws for fastening covers to bodies
- Lockout hole for padlock having 1/4" hasp is provided when used with covers for front lever and side rocker type operation
- Lockout provisions on front operated pushbutton (marked "STOP" and "OFF") and all selector switch covers
- For covers with front lever and side rocker type operating handles, threaded type shafts and bushings are used to ensure flametightness
- Accurately ground flange for flametight joint when mated with ground flange on back box

### Certifications and Compliances:

(When used with EDSCM & EDS bodies):

- NEC/CEC:
  - Class I, Division 1 & 2, Groups C, D†
  - Class I, Division 2, Groups B, C, D
  - Class II, Division 1, Groups E, F, G
  - Class II, Division 2, Groups F, G
  - Class III
- NEMA/EEMAC: 3, 7B (Div. 2) CD, 9EFG
- UL Standards: 894, 698
- CSA Standard: C22.2 No. 30

Pushbuttons, Pilot Lights & Selector Switches (when used with EFS bodies):

- NEC/CEC:
  - Class I, Division 1 & 2, Groups B, C, D
  - Class II, Division 1, Groups E, F, G
  - Class II, Division 2, Groups F, G
  - Class III
- NEMA/EEMAC: 3, 7BCD, 9EFG
- UL Standard: 1203
- CSA Standard: C22.2 No. 30

### Standard Materials:

- Covers, front operated – Feraloy iron alloy and copper-free aluminum
- Covers, side operated – copper-free aluminum
- Shafts and shaft bushings – stainless steel
- Rocker handles, pushbuttons and guards – type 6 / 6 nylon
- Sealing enclosures – copper-free aluminum

CPS delayed action receptacle cover:

- Receptacle housing – copper-free aluminum
- Insulation – diallyl phthalate (DAP)
- Contacts – brass

### Standard Finishes:

- Feraloy – electrogalvanized and aluminum acrylic paint
- Copper-free aluminum – natural

### Options:

The following special options are available by adding suffix to Cat. #:

#### Description

- Lockout provision on front operated pushbutton cover (standard on buttons marked "STOP" and "OFF")..... **S153**
- Three-position selector switches with modified operation:
  - Momentary contact clockwise operation, spring return to center, maintained contact counter-clockwise operation..... **S634**
  - Momentary contact counter-clockwise operation, spring return to center, maintained contact clockwise operation..... **S635**
- Emergency "STOP" button momentary – front operated mushroom button breaks normally closed contacts (DL02 legend plate included – must specify legend text)..... **S111**
- Bodies and covers – copper-free aluminum..... **SA**
- For 24 VDC operation on pilot lights..... **S300**
- Maintained contact mushroom head with lockout (Will not fit with a pilot light if transformer is required) (Push to stop only)..... **S769**
- Spring return to center from right and left (For DEV43 or DEV44 only)..... **S842**
- Key Operated – removable from all positions..... **S847 K1‡**
- Key Operated – removable from left position for DEV42 or from center for DEV43 and DEV44..... **S847 K2‡**
- Key Operated – removable from right position for DEV42 or from left for DEV43 and DEV44..... **S847 K3‡**
- Key Operated – removable from right position for DEV43 and DEV44..... **S847 K4‡**

### Ordering Information: Manual Motor Starters

Poles	Max. H.P.	Max. Volts A.C.	Cat. #
<b>With Allen-Bradley Bulletin 600 Switches</b>			
1	1	115–230	<b>DSD910</b> ①
2	1	115–230	<b>DSD911</b> ①
<b>With General Electric Switches</b>			
1	1	115–230	<b>DSD912</b> ①§
2	1	115–230	<b>DSD913</b> ①§
<b>With Cutler-Hammer Switches</b>			
1	1	115–230	<b>DSD914</b> ①§
2	1	115–230	<b>DSD915</b> ①§
<b>With Arrow-Hart Switches</b>			
<b>Without Overload Protection</b>			
2	5	250 (30A)	<b>DSD916</b>
2	7.5	600 (30A)	<b>DSD916</b>
3	7.5	250 (30A)	<b>DSD917</b>
3	15	600 (20A)	<b>DSD917</b>



† When a CPS receptacle cover device is used, the assembly meets requirements for Class I, Groups C and D areas only.

\* For pushbuttons, pilot lights, & selector switches, use EFS back box with required external conduit seal for 1 inch hub size, within 5 feet for Class I, Division 1, Group B applications.

‡ Additional key lock housings available; please contact Customer Service.

§ A comparable factory sealed cover will fit on the EDSCM21 body, EDS and EDSC bodies and in bottom gang of EDSCM33 and EDSCM63 bodies. To order, add suffix S701 to catalog number.

① Includes one interchangeable heater. To select heater see pages 479–480. Symbol 0 (zero) may be used to indicate heater omitted.

**Crouse-Hinds**

by **Eaton**

www.crouse-hinds.com US: 1-866-764-5454 CAN: 1-800-265-0502 Copyright© 2014 Eaton's Crouse-Hinds Business

4C

## EDS / EFS Series Control Stations

### DSD Cover and Device Sub-Assemblies

Cl. I, Div. 1 & 2, Groups B\*, C, D†  
Cl. II, Div. 1, Groups E, F, G  
Cl. II, Div. 2, Groups F, G  
Cl. III  
NEMA 3, 7B\*CD, 9EFG

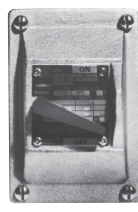
Explosionproof  
Dust-Ignitionproof  
Raintight  
Wet Locations



DSD918



DSD922



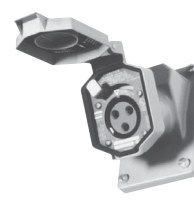
DSD933



DSD962



DSD970



CPS152R



ENR5201

For use with EDSCM modular control device bodies see page 519 & EFS/EDS back boxes.

### Ordering Information

#### Front Operated Pushbutton Stations 600 VAC Heavy Duty, Factory Sealed

Number of Cover Buttons	Normal Position	Diagram	Cat. #
1	1 Circuit Universal		DSD918 ①
1	2 Circuits Universal		DSD919 ①
	2 Circuits		DSD920 ①■
2	2 Circuits Universal		DSD921 ①
2	2 Circuits Start-Stop unless otherwise specified		DSD922 ①■
2	2 Circuits Universal Mushroom Head		DSD970 ①
3 (2-operator)	3 Circuits Universal		DSD962 ①
3 (3-operator)	3 Circuits Universal		DS511 ① SA\$
3 (3-operator)	3 Circuits Universal Double pilot light - single pushbutton combo		DS513 ① SA\$
3 (3-operator)	3 Circuits Universal Double pushbutton - single pilot light combo		DS514 ① SA\$

#### Front Operated General Use Snap Switch

Style	Amperes 120 VAC	277 VAC	Cat. #
1-Pole	20	20	DSD933‡
2-Pole	20	20	DSD934‡
3-Pole	▲	▲	DSD935⊕
3-Way	20	20	DSD936‡
4-Way	20	20	DSD937‡
1-Pole	30	30	DSD939‡
2-Pole	30	30	DSD940‡
3-Way	30	30	DSD941‡

#### Delayed Action Receptacles Factory Sealed

Rating	Cat. #
20 A, 1 HP, 125–250 VAC 60 Hertz 20 A, 18 VDC	CPS152R (2 wire, 3 pole)
30 A, 1½ HP, 125–250 VAC 60 Hertz; 7 A, ½ HP, 480 VAC, 60 Hertz	CPS532R (2 wire, 3 pole)
30 A, 3 HP, 125–250 VAC 60 Hertz; 7A, 1 HP, 480 VAC, 60 Hertz	CPS732R (3 wire, 4 pole)

#### General Purpose, Dead Front Factory Sealed

Rating	Cat. #	Diagram
20 A, 125 VAC	ENR5201	5-20R
20 A, 250 VAC	ENR6202	6-20R

① If desired, markings on indicating plates may be added to catalog number. Select from the list of standard markings below:

START	OFF	RESET	LIGHT ON
STOP	RUN	TRIP	HAND
ON	JOG	TEST	AUTOMATIC
EMERGENCY	OPEN	DOWN	RAISE
FORWARD	CLOSE	IN	LOWER
REVERSE	UP	OUT	

\* For pushbuttons, pilot lights, & selector switches, use EFS back box with required external conduit seal for 1 inch hub size, within 5 feet for Class I, Division 1, Group B applications.

† When a CPS receptacle cover device is used, the assembly meets requirements for Class I, Groups C and D areas only.

■ Two universal contact blocks, must be wired as two circuits with one normally open and one normally closed. 1 green button, 1 red button, and lockout provision provided as standard.

▲ 16 Amp., 125V.

10 Amp., 250V.

‡ To order a comparable factory sealed cover for EDS, EDSC, EDSCM21 and the bottom gang of EDSCM33 and EDSCM63 bodies, add suffix S697. Factory sealed for Class I, Division 2, Group B.

⊕ Cannot be factory sealed.

\$ Can only be used with EFD Series 1½ gang back boxes. Pushbuttons include contact blocks. Standard pushbutton color is black. For optional colors - red, green - write in color. Example: DS511 GREEN BLACK RED-SA. First color is for uppermost button. For optional legend markings write in marking after device operator color. Example: DS513-J3 JOG-J1 STOP GREEN-SA.

# EDS / EFS Series Control Stations

## DSD Cover and Device Sub-Assemblies

Cl. I, Div. 1 & 2, Groups B\*, C, D Explosionproof  
Cl. II, Div. 1, Groups E, F, G Dust-Ignitionproof  
Cl. II, Div. 2, Groups F, G Raintight  
Cl. III Wet Locations  
NEMA 3, 7B\*CD, 9EFG

4C



DSD951



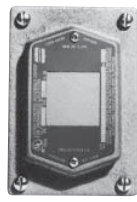
DSD925



DSD947-J1-J1



DSD958



DSD957



DSD961-J1

For use with EDSCM modular control device bodies see page 519 & EFS/EDS back boxes.

## Ordering Information Side Operated Pushbutton Station 600 VAC Heavy Duty, Factory Sealed

Normal Position	Diagram	Cat. #
1 Circuit Universal		DSD949 ③
2 Circuits Universal		DSD950 ③
2 Circuits 1 Open - A 1 Closed - B Start-Stop unless otherwise specified		DSD951 ③

## Selector Switches Maintained Contact 600 VAC Heavy Duty, Factory Sealed

Style	Position 1	Position 2	Position 3	Cat. #
Two Circuit	A1	A2		DSD923 ④
Two Position	A1	A2		DSD924 ④
	B1	B2		
	A1	A2		DSD925 ④
Two Circuit	A1	A2		DSD926 ④
	B1	B2		
Three Position	A1	A2		DSD927 ④
	B1	B2		
Four Circuit	A1	A2		
	B1	B2		

\* For pushbuttons, pilot lights, & selector switches, use EFS back box with required external conduit seal for 1 inch hub size, within 5 feet for Class I, Division 1, Group B applications.  
‡LED pilot lights can be furnished in place of standard incandescent pilot lamps. Add suffix LED to Cat. No. after last color symbol.

§ Can only be used with EFD Series 1½ gang back boxes. Pushbuttons include contact blocks. Standard pushbutton color is black. For optional colors - red, green - write in color. Example: DS511 GREEN BLACK RED-SA. First color is for uppermost button. For optional legend markings write in marking after device operator color. Example: DS513-J3 JOG-J1 STOP GREEN-SA.

## Crouse-Hinds

by E.T.N

## Pilot Light Devices‡

### Factory Sealed

Description	Diagram	Cat. #
With one pilot light		DSD948 ①
With two pilot lights (Not available with a transformer)		DSD947 ①
With one pilot light and transformer		DSD948 ① ②
With one pilot light and pushbutton station		DSD958 ①
With one pilot light and 1 double pushbutton station		DSD961 ①
With one pilot light & transformer and 1 double pushbutton station		DSD961 ① ②
Triple pilot light		DS512 ① SA§
Double pilot light - single pushbutton combo		DS513 ① SA§
Double pushbutton - single pilot light combo		DS514 ① SA§
With one pilot light & 2 position selector switch, two circuit (pos. 1 - N.O., pos. 2 - N.C.)		DSD973 ① ④
With one pilot light & 2 position selector switch, four circuit (pos. 1 - N.O., pos. 2 - N.C. for both switches)		DSD974 ① ④
With one pilot light & 3 position selector switch, two circuit (pos. 1 - N.O., pos. 2 - open, pos. 3 - N.C.)		DSD975 ① ④
With one pilot light & 3 position selector switch, four circuit (pos. 1 - N.O., pos. 2 - open, pos. 3 - N.C. for both switches)		DSD976 ① ④
With one pilot light & 3 position selector switch, four circuit (pos. 1 - N.C., pos. 2 - N.O., pos. 3 - N.O. for switch A; pos. 1 - N.O., pos. 2 - N.O., pos. 3 - N.C. for switch B)		DSD977 ① ④

## Blank Cover

Description	Cat. #
Blank Cover	DSD957

① Add color symbol for each pilot light from table below.

Color	Symbol	Color	Symbol	Color	Symbol
Red	J1	Amber	J6	Blue	J11
Green	J3	Clear	J10		

② Add suffix below for transformer primary voltage:

## Transformers – Voltages above 125

Nom. Volts 50–60Hz Transformer	Primary Voltage Range	Suffix
220 / 110	220–240	T2
440 / 110	440–480	T4
550 / 110	550–600	T5

③ If desired, markings on indicating plates may be added to catalog number. Select from the list of standard markings below:

START	OFF	RESET	LIGHT ON
STOP	RUN	TRIP	HAND
ON	JOG	TEST	AUTOMATIC
EMERGENCY FORWARD	OPEN	DOWN	RAISE
REVERSE	CLOSE	IN	LOWER
	UP	OUT	

④ Specify indicating plate markings. Standard indicating plate markings available are as follows:

Two-Position		
RUN, JOG	FAST, SLOW	IN, OUT
HAND, AUTOMATIC	OPEN, CLOSE	RAISE, LOWER
FORWARD, REVERSE	UP, DOWN	START, STOP
	ON, OFF	

Three-Position	
JOG, OFF, RUN	1, OFF, 2
AUTOMATIC, OFF, HAND	OPEN, OFF, CLOSE
FORWARD, OFF, REVERSE	UP, OFF, DOWN
FAST, OFF, SLOW	