

ALUMINUM SPLICER-REDUCER • TYPE SR

Copper or aluminum conductors



- Body, fabricated from high strength aluminum alloy
- Solid center barrier
- Electro tin plated
- Rounded corner for easy taping

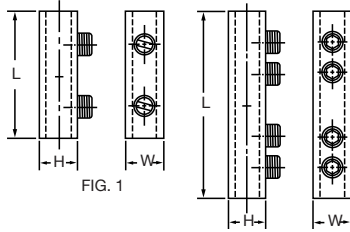
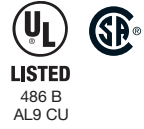
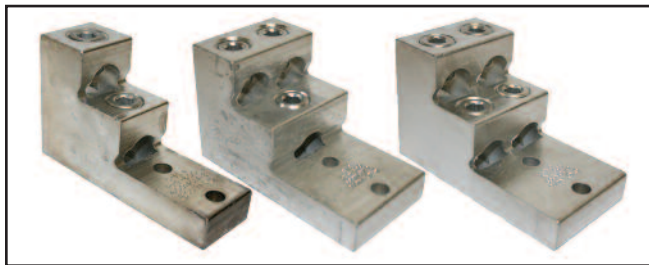


FIG. 2

| Part # | Fig. | Conductor Range | Approximate Dimensions | | |
|--------|------|-----------------|------------------------|-------|---------|
| | | | H in | W in | L in |
| SR2 | 1 | 14-2 | 3/16 | 1/2 | 1 3/8 |
| SR0 | 1 | 14-1/0 | 3/4 | 3/4 | 1 29/32 |
| SR250 | 2 | 6-250MCM | 1 1/8 | 1 | 3 15/16 |
| SR2502 | 1 | 6-250MCM | 1 1/8 | 1 | 1 15/16 |
| SR350 | 2 | 6-350MCM | 1 3/8 | 1 1/8 | 4 3/8 |
| SR3502 | 1 | 6-350MCM | 1 3/8 | 1 1/8 | 2 7/8 |
| SR500 | 2 | 3/0-500MCM | 1 1/2 | 1 3/8 | 5 |
| SR750 | 2 | 250-750MCM | 1 3/4 | 1 5/8 | 6 1/4 |

ALUMINUM SOLDERLESS PANELBOARD LUGS • TYPE PB

FOR COPPER OR ALUMINUM CONDUCTORS



Body, fabricated from high strength aluminum alloy extrusions.

Lug is 100% re-usable using hex wrench. No special tools required.

Maximum conductivity, compact design, light weight with ultimate strength.

Finish, electro-tin plated to assure minimum contact resistance and protection against corrosion when used with copper wire. (For added protection apply Penn-Union Cual-Aid® to cable before installation.)

| Part # | Fig. | No. of Conductors | Conductor Range | Stud Size | Approximate Dimensions | | |
|--------|------|-------------------|-----------------|-----------|------------------------|---------|---------|
| | | | | | H in | W in | L in |
| PB2300 | 1 | 2 | 6-300MCM | 5/16 (1) | 2 | 1 | 3 |
| PB2600 | 2 | 2 | 2-600MCM | 3/8 (2) | 3 | 1 1/2 | 4 29/32 |
| PB2750 | 2 | 2 | 1/0-750MCM | 3/8 (2) | 3 | 1 1/8 | 4 29/32 |
| PB3600 | 3 | 3 | 2-600MCM | 3/8 (2) | 3 | 2 1/2 | 4 29/32 |
| PB3750 | 3 | 3 | 1/0-750MCM | 3/8 (2) | 3 | 2 27/32 | 4 29/32 |
| PB4600 | 4 | 4 | 2-600MCM | 3/8 (2) | 3 | 2 1/2 | 4 29/32 |
| PB4750 | 4 | 4 | 1/0-750MCM | 3/8 (2) | 3 | 2 27/32 | 4 29/32 |

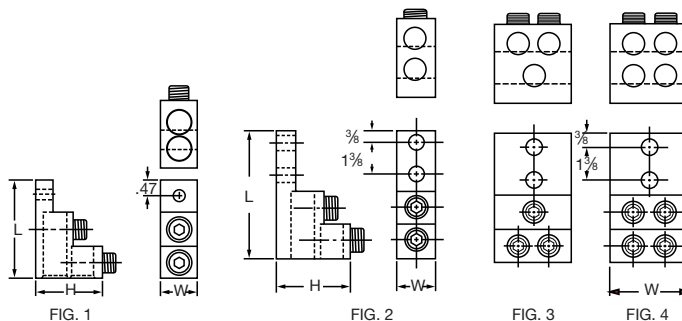


FIG. 1

FIG. 2

FIG. 3

FIG. 4

F