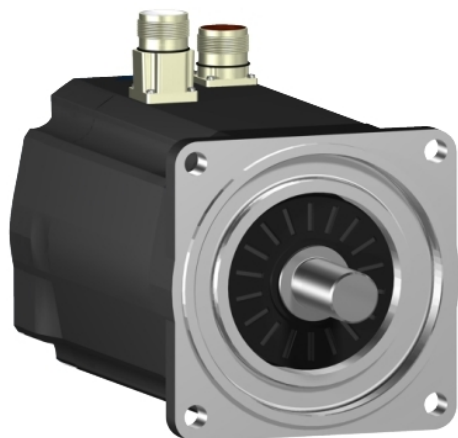


SH31401P02F1200

servo motor SH3 140
11,1Nm,nokey,multi,brake,str.conn,IP65/
IP67,4k RPM



Main

| | |
|---------------------------|-------------|
| Range Compatibility | PacDrive 3 |
| Product or Component Type | Servo motor |
| Device short name | SH3.....P |

Complementary

| | |
|---------------------------|---|
| Maximum mechanical speed | 4000 rpm |
| [Us] rated supply voltage | 115...480 V |
| Phase | Three phase |
| Continuous stall current | 7.8 A |
| Continuous stall torque | 98.24 lbf.in (11.1 N.m) 115...480 V three phase |
| Continuous power | 2900 W |
| Peak stall torque | 238.97 lbf.in (27 N.m) 115...480 V three phase |
| Nominal output power | 860 W 115 V single phase 1670 W 230 V single phase 2890 W 400 V three phase 3170 W 480 V three phase |
| Nominal torque | 96.92 Lbf.In (10.95 N.m) 115 V single phase 93.82 Lbf.In (10.6 N.m) 230 V single phase 81.43 Lbf.In (9.2 N.m) 400 V three phase 74.35 lbf.in (8.4 N.m) 480 V three phase |
| Nominal speed | 750 rpm 115 V single phase 1500 rpm 230 V single phase 3000 rpm 400 V three phase 3600 rpm 480 V three phase |
| Maximum current Irms | 20.8 A |
| Shaft end | Smooth shaft |
| Shaft diameter | 0.94 in (24 mm) |
| Shaft length | 1.97 in (50 mm) |
| IP degree of protection | Motor IP65 EN/IEC 60034-5 Shaft bushing IP65 EN/IEC 60034-5 Housing IP67 EN/IEC 60034-5 |
| Encoder type | Absolute multiturn SinCos Hiperface |
| Speed feedback resolution | 128 periods |
| Holding brake | With |
| Holding torque | 203.57 lbf.in (23 N.m) |
| Mounting Support | International standard flange |
| Motor flange size | 5.51 in (140 mm) |
| Electrical Connection | Straight connector |
| Torque constant | 1.43 N.m/A 248 °F (120 °C) |
| Back emf constant | 100 V/krpm 68 °F (20 °C) |
| Number of motor poles | 5 |
| Rotor inertia | 9.21 kg.cm ² |

| | |
|---------------------------------------|---|
| Stator resistance | 1.41 Ohm |
| Stator inductance | 23.72 mH |
| Maximum radial force Fr | 1930 N 1000 rpm 1530 N 2000 rpm 1340 N 3000 rpm |
| Maximum axial force Fa | 300 N |
| Type of cooling | Natural convection |
| Length | 10.06 in (255.5 mm) |
| Centring collar diameter | 5.12 in (130 mm) |
| Centring collar depth | 0.14 in (3.5 mm) |
| Number of mounting holes | 4 |
| Mounting holes diameter | 0.43 in (11 mm) |
| Circle diameter of the mounting holes | 6.50 in (165 mm) |
| Net Weight | 28.66 lb(US) (13 kg) |

Ordering and shipping details

| | |
|-------------------|------------------------------|
| Category | 18359-PACDRIVE3 SERVO MOTORS |
| Discount Schedule | PC52 |
| Returnability | No |

Packing Units

| | |
|------------------------------|--------------------|
| Unit Type of Package 1 | PCE |
| Number of Units in Package 1 | 1 |
| Package 1 Height | 0.39 in (1 cm) |
| Package 1 Width | 0.39 in (1 cm) |
| Package 1 Length | 0.39 in (1 cm) |
| Package 1 Weight | 2.20 lb(US) (1 kg) |

Contractual warranty

| | |
|----------|-----------|
| Warranty | 18 months |
|----------|-----------|