

110 Type Wall Mount Patch Panels

Description

Wirewerks™ 110-Type Wall Mount Patch Panels deliver outstanding performance, reliability, maintainability, and space savings in low-density applications. Precision fabricated from high-quality ABS UL94V-0 thermo-plastic, each 12-port patch panel comes complete with an 89D Bracket for fast, secure wall mounting. Patch panels snap effortlessly into the 89D Bracket, and the panel may be reversed in the bracket during installation or repair activities to provide easy access to the rear 110-type termination clips.

For faster installations, each panel comes populated with two 6-port connector modules pre-loaded with Wirewerks' high-performance CAT5e or CAT6 110-type connectors featuring Wirewerks' 50µin gold plated RJ45 contact blades for superior performance and reliability.

For easy installation, maintenance and administration, ports are numbered on the front panel, and each 6-port module provides customizable, write-on designation labels with protective hinged windows. The rear of each module is printed with port numbers and T568A/B color-coded termination schemes.

Wirewerks 6-Port 110-type modules allow for easy, 'snap-in' replacement of modules with damaged connectors, reducing mean-time-to-repair and increasing network up-time.

Features and Benefits

Pre-Loaded 6-Port 110-Type connector modules reduce installation time

Color-coded T568A/B termination indicators reduce installation time and errors

Reversible mounting on 89D bracket for easy termination

Installation hardware and Instruction Manual are included

Replaceable 'snap-in' 6-Port connector modules allow faster, easier repairs

Compatibility with standard 110-type termination tools eliminates special tools and technician training

Port Identification windows for each port

Applications

Data Centers

Consolidation Points

Equipment Room

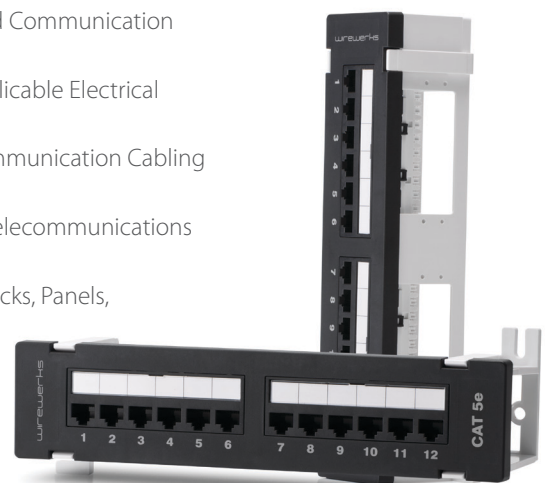
Telecommunication Room

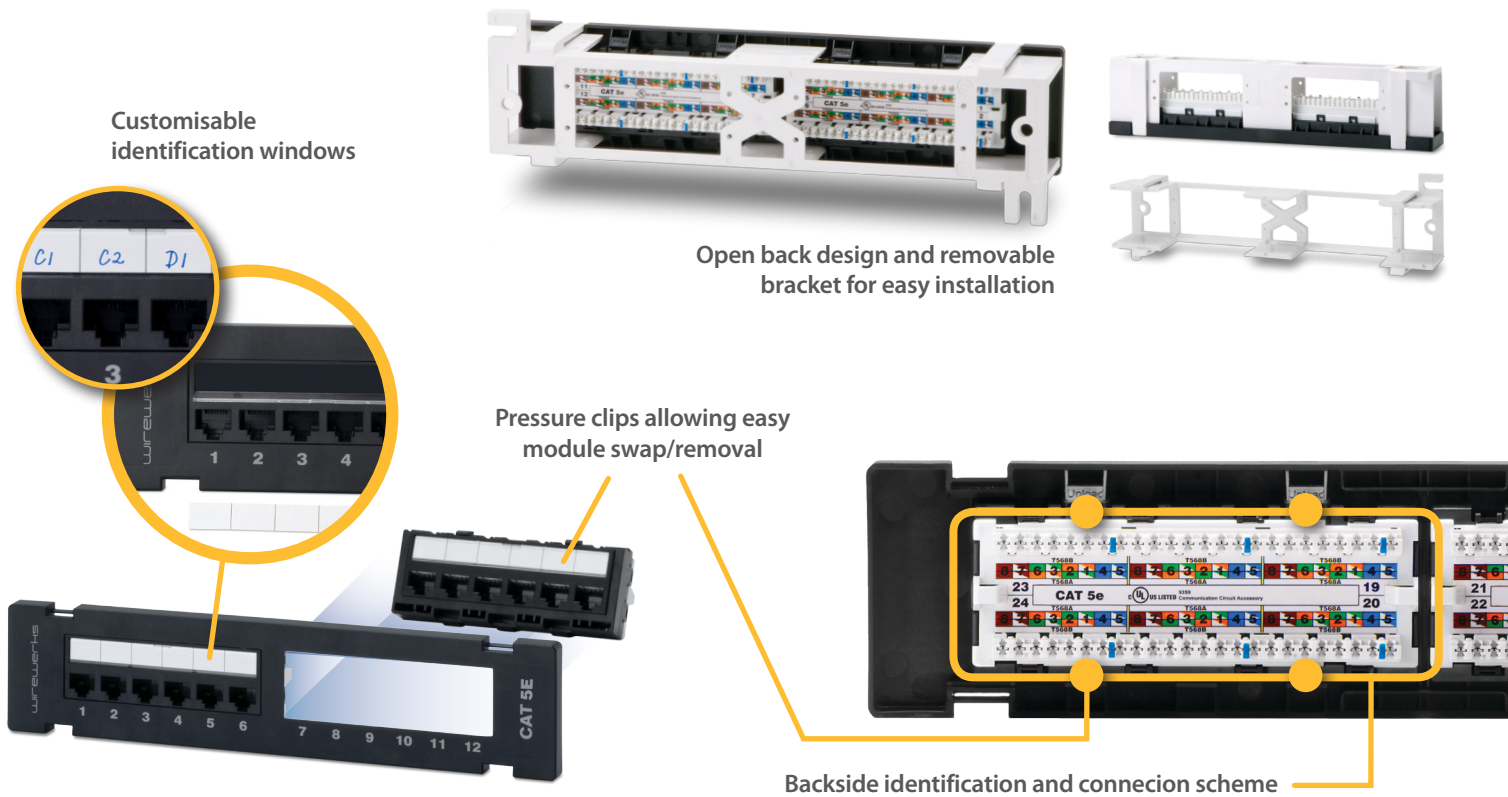
MDU Residential Solutions

Work Area

Certification and Compliance

UL	Bi-national (Canada, US) Listed Communication Circuit Accessories
ETL Verified	To ANSI/TIA-568-C.2 with Applicable Electrical Transmission Characteristics
ANSI/TIA-568-C.2	Balanced Twisted-Pair Telecommunication Cabling and Components Standards
TIA-606-A	Administration Standard for Telecommunications Infrastructure
EIA-310-D	Requirements for Cabinets, Racks, Panels, AND Associated Equipment
FCC 47 part 68	Connection of the Terminal Equipment to the Telephone Network
RoHS	Directive on Restriction of Hazardous Substances





Part Number	Description
WW000802	CAT5e 110 patch panel, wall mount, 12 port, black, T568A/B
WW000812	CAT6 110 patch panel, wall mount, 12 port, black, T568A/B

Physical Characteristics

Parameter	Value
Material (Panel)	ABS UL 94 V-0 Plastic
Material (Spring-Wire)	Phosphor Bronze Alloy Plated with 50µin Gold over 100µin of Nickel
Material (IDC)	Phosphor Bronze Alloy with 100µin 100% Tin alloy
Storage Temp	Min -40°C (-40°F) Max 125°C (257°F)
Operation Temp	Min -20°C (-4°F) Max 60°C (104°F)
Dimensions (W X D X H)	10" X 2.35" X 2.30"

Mechanical Characteristics

Parameter	Value
Plug Retention	50 N (11 lbf) for 60 seconds
Mating Cycles	≥750 Cycles
IDC Wire Gauge	22-24 AWG

Electrical Characteristics

Parameter	Value
Insulation Resistance	≥500 MΩ at 100 V DC
Dielectric Withstanding Voltage	1000 V DC or AC Peak Contact-to-Contact at 60 Hz for 60 seconds
Spring Wire Contact Resistance	≤20 mΩ
IDC Wire Contact Resistance	≤2.5 mΩ

What is included

- 1 X 89D Bracket
- 4 X Tie-Wrap 4" Long
- 2 X 6-Port Blank Labels
- Instruction manual