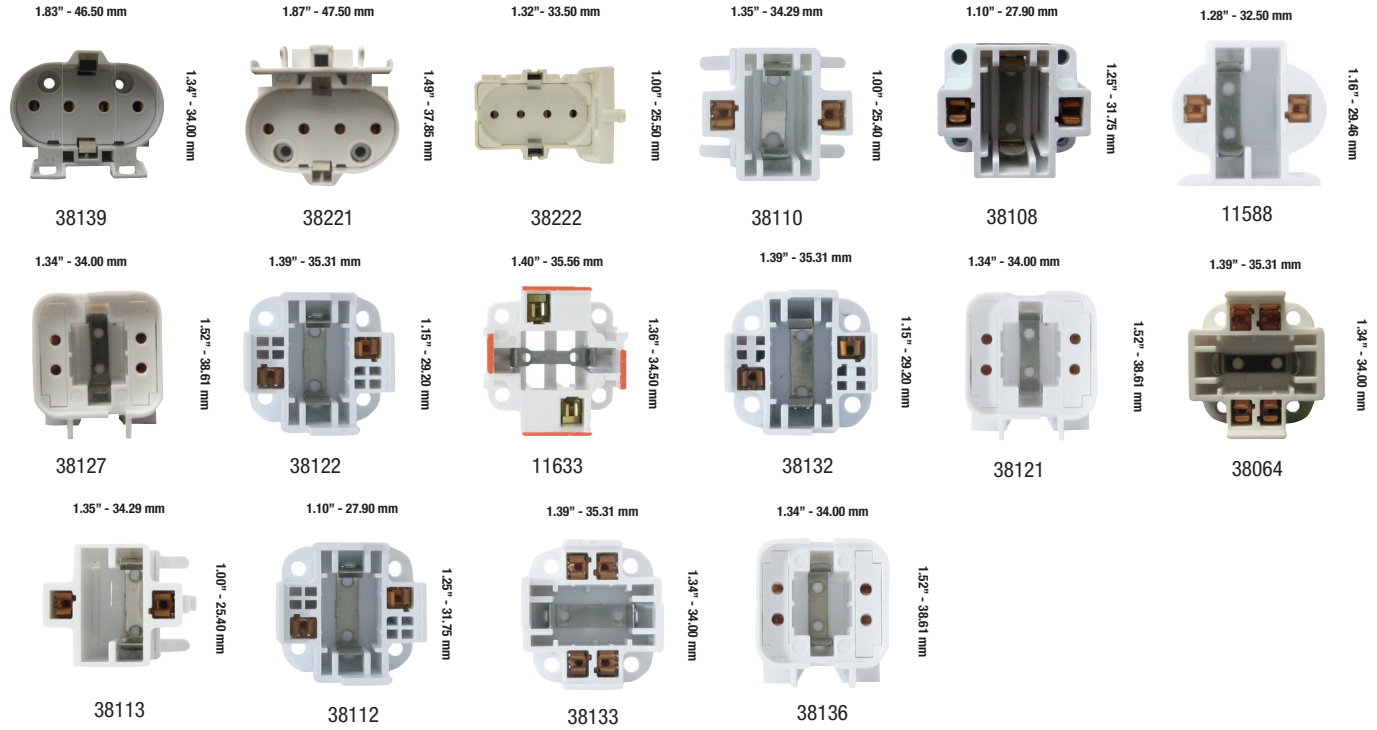




Sockets & Accessories

CFL Sockets

Socket and accessory



Order code	Description	Base	Volts (V)	Watts (W)	Case qty (inner/master)
38139	HORIZONTAL BOTTOM SCREW MOUNT	G211	600	75	10/2 000
38221	HORIZONTAL SNAP-IN MNT	G211	600	75	10/2 000
38222	HORIZ 90D BOTTOM SNAP-IN MNT	G211	600	75	10/2 000
38110	9 WT VERTICAL MOUNT SNAP-IN	G23	600	75	15/500
38108	7-9WT VERT MNT 4 HOLE METAL/CLIP	G23 / G23-2	600	75	20/2 000
11588	CF13-HSM HORIZ BOTTOM SCREW MT	G23 / GX23	600	75	10/250
38127	18WT 4-PIN HORIZONTAL SCR MNT	G24d-1	600	75	10/2 000
38122	18WT VERTICAL 4 HOLE SCREW MN	G24d-2	600	75	10/2 000
11633	26WT VERT TOP/BOTTOM SCR MNT	G24d-3	600	75	10/500
38132	26WT VERTICAL 4 HOLE SCREW MN	G24d-3	600	75	10/2 000
38121	13WT 4-PIN HORZ SCR MNT 2 HOL	G24q-1	600	75	10/2 000
38064	SKT42 13-42W 4PIN UNIV.SOCKET	G24q-1/G24q-2 /G24q-3 /G24q-4	600	75	1/1 000
38113	13 WT VERTICAL MOUNT SNAP-IN	GX23	600	75	10/2 000
38112	13 WT VERTICAL MOUNT 4 HOLE	GX23 / GX23-2	600	75	N/A
38133	26WT 4-PIN VERT 4 HOLE SCR MN	GX24q-3	600	75	1/2 000
38136	26WT 4-PIN HORIZONTAL SCREW M	GX24q-3	600	75	10/2 000

Fluorescent Sockets

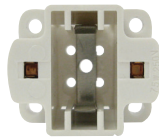
0.51" - 12.95 mm



38033

1.02" - 25.91 mm

1.31" - 33.27 mm



38034

1.25" - 31.75 mm

1.43" - 36.32 mm



10737

2.75" - 69.85 mm

1.26" - 32.00 mm



38017

2.00" - 50.80 mm

0.33" - 8.38 mm



38197

1.95" - 49.78 mm

1.01" - 25.65 mm



38240

1.55" - 41.91 mm

1.27" - 32.26 mm



38241

1.55" - 42.16 mm

1.26" - 32.00 mm



38242

2.00" - 50.80 mm

1.27" - 32.26 mm



38243

1.50" - 40.54 mm

0.72" - 18.29 mm



38244

1.59" - 40.39 mm

1.22" - 31.00 mm



58791

1.55" - 42.16 mm

1.22" - 31.00 mm



58792

1.50" - 38.10 mm

1.07" - 27.18 mm



38003

0.57" - 14.48 mm

Order code	Description	Base	Volts (V)	Watts (W)	Case qty (inner/master)
38033	SK1062 CIRCLINE SOCKET/9" LEA	G10-q	600	660	10/2 000
38034	7-9 WT VERTICAL MOUNT	G23 / G23-2	600	75	250/2 500
10737	T8/T12 W/STARTER BASE SCR MNT	G13	600	660	1/50
38017	T8/T12 TALL PRF w/CN SCR/SLDE	G13	600	660	10/300
38197	T8/T12 TALL PRF SNAP-IN SHUNTED	G13	600	660	250/2 500
38240	T8/T12 LOW PRF SLIDE MNT STD	G13	600	660	10/1 000
38241	T8/T12 LOW PRF SLIDE MNT SHUNTED STD	G13	600	660	10/1 000
38242	T8/T12 TALL PRF SLIDE MNT STD	G13	600	660	10/1 000
38243	T8/T12 LOW PRF U SLIDE MNT STD	G13	600	660	1/10
38244	T8/T12 LOW PROFILE U SLIDE MOUNT SHT STD	G13	600	660	10/1 000
58791	T8/T12 ROTARY SHUNTED TALL LOCKABLE	G13	600	660	10/500
58792	T8/T12 ROTARY SHUNTED LOW LOCKABLE	G13	600	660	10/500
38003	T5 REAR SNP MNT LOCK w/SPG PLT	G5	600	75	10/2 000





Order code	Description	Base	Volts (V)	Watts (W)	Case qty (inner/master)
38004	T5 MED SNP/SCR MNT ROT. LOCK	G5	600	75	10/5 000
38245	T5 SNAP-IN or SCREW MNT STD	G5	600	120	10/1 000
38022	T12 HO VERT SPNG END 9" LEADS	R17d	600	660	N/A
38023	T12 HO VERT STAT END 9" LEADS	R17d	600	660	10/500
38024	SK82 SNAP-IN STATIONARY END	R17d	600	660	1/500
38025	T12 HO SNPIN/SPRING END R17d	R17d	600	660	1/500
38026	T12 HO FIX END SLD/LCK-ON MNT	R17d	600	660	10/500
38027	T12 HO PLNG END SLD/LCK-ON MNT	R17d	600	1000	10/500
38030	SK900 HORIZONTAL STATION. END	R17d	600	660	10/500
38031	SK901 HORIZONTAL SPRING END	R17d	1000	660	10/500
59799	T8/T12 STATIONERY END/SLIDE	R17d	600	660	10/500
59800	T8/T12 SPRING END/SLIDE ON	R17d	600	660	10/200
38020	T8/T12 SLIML STAT END SLD MNT	Fa8	600	660	10/200
38021	T8/T12 SLIML PLNG END SLD MNT	Fa8	600	1 000	10/200



HID Sockets



1.49" - 37.85 mm

38062



1.49" - 37.85 mm

38168



2.15" - 54.60 mm

10983



1.01" - 25.65 mm

68452



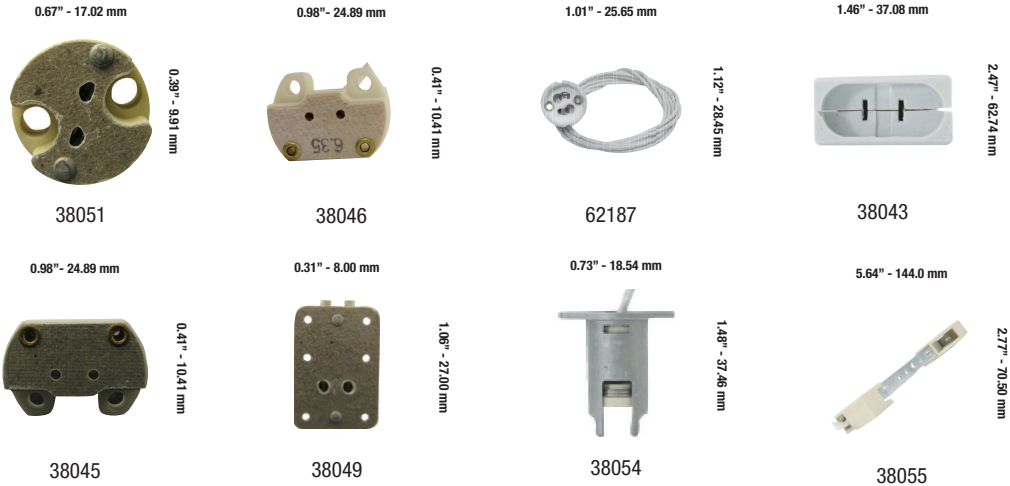
2.15" - 54.60 mm

38186

Order code	Description	Base	Volts (V)	Watts (W)	Case qty (inner/master)
38062	4KV 24" SEW-2 LEADS PULSE RTD	E26	600	660	1/250
38168	4KV 2MALE SCR MNT 12"SEW-1LEA	E26	600	660	1/250
10983	PORC MOG 1/2" DIE CAST CAP	E39	600	1 500	1/50
68452	4KV MOGUL E39 12" MOUNTING SCREWS	E39	600	1 500	1/75
38186	4KV MOG BASE TERM W/MNT SCR	E39	600	1 500	1/10



Halogen Sockets



Order code	Description	Base	Volts (V)	Watts (W)	Case qty (inner/master)
38051	G4 BACK ENTRY 12" LEADS	G4	24	100	10/200
38046	G6.35(G1+G2) BACK ENTRY 6"LEA	G5.3-GX5.3	300	500	1/100
62187	DF-05 GU-10/GZ-10 BASE (TAL) LAMPHOLDER	GU10	250	1 000	N/A
38043	PAR CONNECTOR MOGUL END PRONG	GX16d	125	1 000	1/200
38045	GX5.3/GU5.3 (MR16) BACK ENTRY 6"LEA	GX5.3/GU5.3	250	1 000	10/250
38049	GX5.3/GU5.3 (MR16) SIDE ENTRY 12"LEADS	GX5.3/GU5.3	24	100	1/50
38054	RSC BRACKET MOUNT(SINGLE SOCK)	R7s	250	1 000	10/200
38055	RSC 119MM ON BRACKET(DBL SOCK)	R7s	250	1 000	25/200



Incandescent Sockets



Order code	Description	Base	Volts (V)	Watts (W)	Case qty (inner/master)
38072	ADJ 3.5" TO 4.75" SCR TERM	E12	125	75	10/500
38075	W/SHOULDER & RING 6" LEADS	E12	125	75	10/250
38076	1-1/2" OVERALL 20" TEW LEADS	E12	125	75	10/250
38206	Z-TYPE BRACKET 9.5" TEW NPT	E12	125	75	10/250
38079	PHEN 1/2" HKY 12" LEADS ALSS	E26	250	660	10/250
38081	PORC 1/2" HKY 12" LEADS ALSS	E26	250	660	25/250
38082	PORC 1/2" HKY 18" LEADS ALSS	E26	250	660	10/250
38083	PORC 1/2" HKY SCR TERM ALSS	E26	250	660	10/250
38085	MED PORC ALUMINUM SCREW SHELL	E26	250	660	1/250
38084	PORC SNAP-IN 9" EXL LEADS	E26	250	660	10/250
38088	2 PC PHEN W/HUSK SCR TERM	E26	250	660	10/250





Order code	Description	Base	Volts (V)	Watts (W)	Case qty (inner/master)
38086	MED PORC NICKEL PLATED SCREW SHELL	E26	250	660	10/250
38094	PUSH THRU INTERIOR ONLY	E26	250	660	10/500
38100	FRONT MNT SNAP-IN SCR TERM	E26	250	660	10/250
38102	PORC OUTER THREAD SKT SCR TER	E26	250	660	10/250
38103	BACK SNAP-IN W/24" 14GA LEADS	E26	250	660	1/250
38104	2PC SURFACE MNT SCR TERM	E26	250	660	10/250
38105	2" CC 2 HOLE FLANG SCR TERM	E26	250	660	10/250
38106	2PC KEYLESS WITH 9" LEAD WIRE	E26	250	660	10/250
38209	2PC KEYLESS W/SCREW TERMINALS	E26	250	660	10/250
38088	2 PC PHEN W/HUSK SCR TERM	E26	250	660	10/250

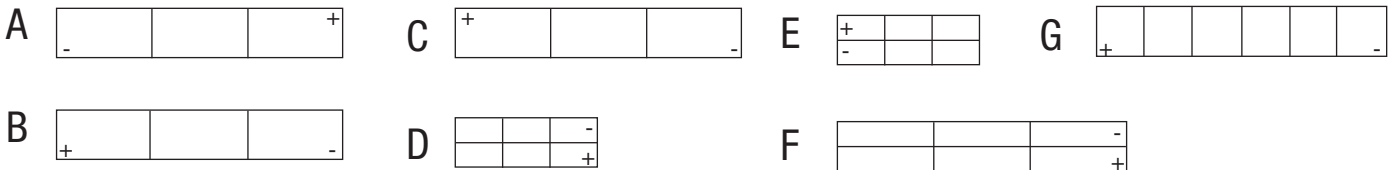


Battery



- Full particle tank formation - Delivers 100% capacity on first cycle
- Immobilized electrolyte - non-spillable, useable in any position, and maintenance free.
- Rechargeable - provides hundreds to thousands of recharge cycles (depending on depth of discharge)
- Extended life span - batteries are designed to last 3 to 5 years in standby applications at 25°C under JIS and Eurobat standards.
- Superior shelf life - battery can be stored for over of 12 months at 20°C.
- Fire alarm, security systems and emergency lighting equipment stanby use.
- Emergency lighting equipment.

Terminal schematics



Order code	Description	Volts		Rated capacity (Ah) *	Weight		Terminal type	Max. charging current (A)	Case qty (master)
		(V)			(lb)	(kg)			
Figure A									
Length : 2 3/4 in. (70 mm) Width : 1 27/32 in. (47 mm) Height** : 3 31/32 in. (101 mm)									
57338	BATTERY/6V/5AH/0.250/TABS (BATPM6-5)	6		5.0	1.65	0.74	FO-02/FO-03	1.50	20
Figure B									
Length : 5 29/32 in. (150 mm) Width : 1 11/32 in. (34 mm) Height** : 3 11/16 in. (94 mm)									
57336	BATTERY/6V/7.2AH/0.250/TABS (BATPM6-7.2)	6		7.2	2.45	1.12	FO-02/FO-03	2.16	10
Length : 5 15/16 in. (151 mm) Width : 2 in. (51 mm) Height** : 3 11/16 in. (94 mm)									
57339	BATTERY/6V/12AH/0.250/TABS (BATPM6-12)	6		12.0	3.70	1.68	FO-02/FO-03	3.60	10
Figure C									
Length : 3 27/32 in. (98 mm) Width : 2 7/32 in. (56 mm) Height** : 4 21/32 in. (118 mm)									
57807	BATTERY/6V/8.5AH (BATPM6-8.5-FO-01)	6		8.5	3.52	1.60	FO-01/FO-02	2.55	10
Figure D									
Length : 3 17/32 in. (90 mm) Width : 2 3/4 in. (70 mm) Height** : 4 in. (101 mm)									
63623	BATTERY/12V/4.5AH (BAT12-4.5)	12		4.5	3.61	1.64	FO-01/FO-02	1.35	12
Figure E									
Length : 5 15/16 in. (151 mm) Width : 2 9/16 in. (65 mm) Height** : 3 3/4 in. (95 mm)									
57337	BATTERY/12V/7.2Ah/0.188/TABS (BAT12-7.2)	12		7.2	4.80	2.18	FO-02/FO-03	2.16	5
Figure F									
Length : 5 15/16 in. (151 mm) Width : 3 27/32 in. (98 mm) Height** : 3 11/16 in. (94 mm)									
57804	BATTERY/12V/12AH/ (BAT12-12-FO-02)	12		12.0	8.82	4.00	FO-02/FO-03	3.60	4
Figure G									
Length : 7 23/32 in. (196 mm) Width : 5 1/8 in. (130 mm) Height** : 6 13/32 in. (163 mm)									
57341	BATTERY/12V/32AH (BAT12-32)	12		32.0	22.20	10.06	RT-01 / FP-07	9.60	1
Length : 7 3/4 in. (197 mm) Width : 5 3/16 in. (132 mm) Height** : 6 1/2 in. (165 mm)									
57335	BATTERY/12V/35AH (BAT12-35)	12		35.0	23.10	10.50	RT-01 / FP-07	10.50	1



Luminaire Disconnect

Features

- Push-wire connection technology
- Up to 12 AWG (solid or stranded) for power input wiring
- 2 conductors per pole on power input side
- Color coding and/or marking
- Male/female are mechanically keyed
- Compact and sleek design
- UL 94 V-0 flammability rating



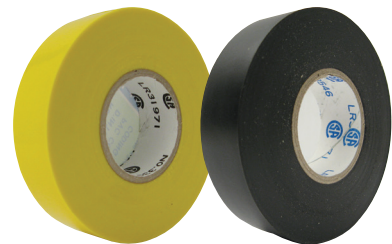
Completely touch-proof
in the unmated position

Order code	Description	Electrical specs	Rated Temperature	Case qty
58869	Luminaire Disconnect	600 V - 60 A	105°C	500

PVC Electrical Tapes

Features

- Moisture proof
- Anti-abrasion
- Flame, cold and voltage resistant



Order code	Description	Color	Thickness		Dimensions		Temp. (°C)	Case qty (inner/master)
			(in.)	(mm)	(mm)	(m)		
11275	TAPE 66' 7MIL BROWN	Brown	.007	0.18	18 x 20.0	¾ x 66	-10 to 90	10/200
11276	TAPE 66' 7MIL GREY	Grey	.007	0.18	18 x 20.0	¾ x 66	-10 to 90	10/200
11277	TAPE 66' 7MIL ORANGE	Orange	.007	0.18	18 x 20.0	¾ x 66	-10 to 90	10/200
11279	TAPE 66' 7MIL YELLOW	Yellow	.007	0.18	18 x 20.0	¾ x 66	-10 to 90	10/200
11290	TAPE 66' 7MIL IND PVC	Black	.007	0.18	18 x 20.0	¾ x 66	-10 to 90	10/200
11291	TAPE 66' 8MIL ALL WEATHER	Black	.008	0.20	18 x 20.0	¾ x 66	-10 to 90	10/200

