

### Main

Range of product	Lexium linear motion
Product or component type	Clamping jaw
Product specific application	To mount portal axis on fixed support
Accessory / separate part category	Maintenance accessories

### Complementary

Product compatibility	PAS 43 linear axis 80 x 80 mm
Range compatibility	Lexium PAS

### Ordering and shipping details

Category	18233-LINEAR MOTION ACCESSORIES
Discount Schedule	PC57
GTIN	3606485228990
Returnability	No
Country of origin	DE

### Packing Units

Unit Type of Package 1	PCE
Number of Units in Package 1	1
Package 1 Height	2.76 in (7.0 cm)
Package 1 Width	5.12 in (13.0 cm)
Package 1 Length	7.48 in (19.0 cm)
Package 1 Weight	26.95 oz (764.0 g)
Unit Type of Package 2	S04
Number of Units in Package 2	12
Package 2 Height	11.81 in (30.0 cm)
Package 2 Width	15.75 in (40.0 cm)
Package 2 Length	23.62 in (60.0 cm)
Package 2 Weight	23.40 lb(US) (10.612 kg)
Unit Type of Package 3	S06
Number of Units in Package 3	36
Package 3 Height	28.94 in (73.5 cm)
Package 3 Width	23.62 in (60.0 cm)
Package 3 Length	31.50 in (80.0 cm)
Package 3 Weight	89.30 lb(US) (40.504 kg)

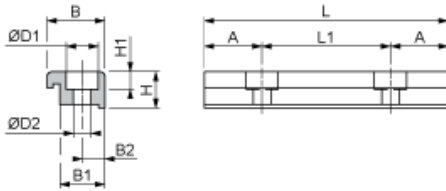
## Offer Sustainability

California proposition 65	WARNING: This product can expose you to chemicals including: Lead and lead compounds, which is known to the State of California to cause cancer and birth defects or other reproductive harm. For more information go to <a href="http://www.P65Warnings.ca.gov">www.P65Warnings.ca.gov</a>
REACH Regulation	<a href="#">REACH Declaration</a>
REACH free of SVHC	Yes
EU RoHS Directive	Pro-active compliance (Product out of EU RoHS legal scope) <a href="#">EU RoHS Declaration</a>
Toxic heavy metal free	Yes
Mercury free	Yes
China RoHS Regulation	<a href="#">China RoHS Declaration</a>
RoHS exemption information	<a href="#">Yes</a>
PVC free	Yes

## Contractual warranty

Warranty	18 months
----------	-----------

Dimensions



Dimensions in mm

A	B	B1	B2	H	H1	L	L1	ØD1	ØD2
18	24	16	8	21.5	6.4	76	40	11	6.6

Dimensions in in.

A	B	B1	B2	H	H1	L	L1	ØD1	ØD2
0.71	0.94	0.63	0.31	0.85	0.25	2.99	1.57	0.43	0.26