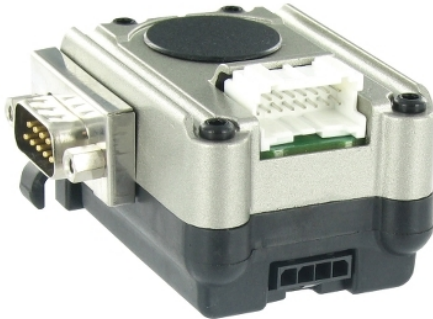


SD218PU20C

motion control stepper motor drive - SD218 -
RS485 = 3A



Main

Range of Product	Lexium SD2
Product or Component Type	Motion stepper drive
Device short name	SD218
Communication interface	RS485

Complementary

Phase	Single phase
[Us] rated supply voltage	24...48 V
Supply voltage type	DC
Supply voltage limits	12...48 V
Maximum motor phase current	3 A
Current consumption	<= 3.2 mA
Voltage state 0 guaranteed	0...0.8 V general purpose I/O defined as inputs
Voltage state 1 guaranteed	2.2...24 V
Input current	1.75 mA - high level general purpose I/O defined as inputs
Output current	600 mA - single channel, duty cycle = 0.8 general purpose I/O defined as outputs 275 mA - four channels, continuous general purpose I/O defined as outputs
Input voltage	0...24 V general purpose I/O defined as inputs 0...24 V general purpose I/O defined as outputs
Residual ripple	2 V at nominal voltage
Electrical connection	1 connector wire crimp 4 pins motor interface 1 connector wire crimp 16 pins supply voltage and multifunction interface 1 connector wire crimp 10 pins communication interface
Transmission Rate	4.8, 9.6, 19.2, 38.4, 115 kbauds
Type of cooling	Convection Conduction
Width	1.77 in (45 mm)
Height	1.30 in (33 mm)
Depth	2.32 in (59 mm)
Marking	CE
Net Weight	0.18 lb(US) (0.08 kg)

The information provided in this documentation contains general descriptions and/or technical characteristics of the performance of the products contained herein. This documentation is not intended as a substitute for and is not to be used for determining suitability or reliability of these products for specific user applications. It is the duty of any such user or integrator to perform the appropriate and complete risk analysis, evaluation and testing of the products with respect to the relevant specific application or use thereof. Neither Schneider Electric Industries SAS nor any of its affiliates or subsidiaries shall be responsible or liable for misuse of the information contained herein.

Environment

Electromagnetic compatibility	Electrostatic discharge IEC 61000-4-2 Immunity to radiated radio-electrical interference IEC 61000-4-3 Immunity to electrical transients IEC 61000-4-4 Voltage/Current impulse IEC 61000-4-5 Immunity to voltage dips IEC 61000-4-11 Immunity to conducted RF disturbances IEC 61000-4-6
Standards	IEC 61000-3-2 EN 61000-3-3 EN 55011 group 1 class A
Ambient air temperature for operation	32...122 °F (0...50 °C) without derating with flange motor mounted on a steel plate 300 x 300 x 10 mm 122...149 °F (50...65 °C) with power derating of 2.2 % per °C with flange motor mounted on a steel plate 300 x 300 x 10 mm
Ambient Air Temperature for Storage	-13...158 °F (-25...70 °C)
Relative humidity	15...85 % without condensation
Operating altitude	<= 3280.84 ft (1000 m) without derating
IP degree of protection	IP20

Ordering and shipping details

Category	11300-MISC. ITEMS
Discount Schedule	NET
GTIN	3606480190360
Returnability	No

Packing Units

Unit Type of Package 1	PCE
Number of Units in Package 1	1
Package 1 Height	3.27 in (8.3 cm)
Package 1 Width	5.28 in (13.4 cm)
Package 1 Length	7.76 in (19.7 cm)
Package 1 Weight	8.61 oz (244.0 g)
Unit Type of Package 2	S03
Number of Units in Package 2	8
Package 2 Height	11.81 in (30.0 cm)
Package 2 Width	11.81 in (30.0 cm)
Package 2 Length	15.75 in (40.0 cm)
Package 2 Weight	5.88 lb(US) (2.665 kg)

Offer Sustainability

California proposition 65	WARNING: This product can expose you to chemicals including: Lead and lead compounds, which is known to the State of California to cause cancer and birth defects or other reproductive harm. For more information go to www.P65Warnings.ca.gov
REACH Regulation	REACH Declaration
REACH free of SVHC	Yes
EU RoHS Directive	Not applicable, out of EU RoHS legal scope
Mercury free	Yes
China RoHS Regulation	China RoHS Declaration
PVC free	Yes

Contractual warranty

Warranty	18 months
----------	-----------

Dimensions

mm
in.

