

Conduit Bodies and Covers

Form 7 body, gasket and cover — one number!



Pre-Assembled Form 7 BlueKote® Conduit Bodies, Gaskets and Covers



Now you can order a conduit body, gasket and cover, pre-assembled, using one catalog number. T&B's pre-assembled cast conduit bodies help reduce transactions, eliminate the need for additional stocking bins and provide an easy inventory reduction. You'll also have less hassle with managing small parts in the truck or crib. Best of all, you can be absolutely confident that the right parts are in your hands when you need them.

T&B® Conduit Bodies and Covers Feature:

- BlueKote internal finish for faster, easier wire pulling
- Epoxy external finish for superior corrosion resistance
- Tapered NPT threads and integral bushings to protect wire insulation
- Bodies are designed with a flat back for more cubic inch capacity. The flat back also keeps the body more stable during installation, requiring fewer conduit straps
- T&B Form 7 bodies and covers are interchangeable with Crouse-Hinds and Appleton's Form 7 bodies and covers

Specifications

- Bodies: Class 30 gray iron alloy
- Covers: Stamped steel with stainless steel screws
- Gaskets: Neoprene
- Finish: Conduit Bodies: Zinc-plating with acrylic epoxy coating and internal PTFE-based BlueKote coating
- Covers: Stamped steel zinc-plating with a clear chromate coating
- Compliances: UL Standard: 514A, 514B Fed. Spec: W-C-586D
- CSA Standard: C22.2 No. 18

Crouse-Hinds is a trademark of Cooper Industries, Inc. Appleton is a trademark of the EGS Electrical Group, a joint venture of Emerson and SPX Corp.

Note: BlueKote is registered for conduit bodies but is not registered for a finish or a coating.

T&B® Pre-Assembled Bodies, Gaskets and Covers

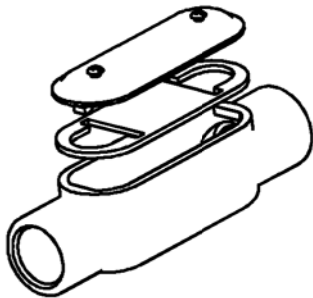


CAT. NO.	TRADE SIZE	PRE-ASSEMBLED PRODUCTS
C17CG-TB	½"	C17 Body, Cover & Gasket
C27CG-TB	¾"	C27 Body, Cover & Gasket
C37CG-TB	1"	C37 Body, Cover & Gasket
C47CG-TB	1¼"	C47 Body, Cover & Gasket
C57CG-TB	1½"	C57 Body, Cover & Gasket
C67CG-TB	2"	C67 Body, Cover & Gasket
LB17CG-TB	½"	LB17 Body, Cover & Gasket
LB27CG-TB	¾"	LB27 Body, Cover & Gasket
LB37CG-TB	1"	LB37 Body, Cover & Gasket
LB47CG-TB	1¼"	LB47 Body, Cover & Gasket
LB57CG-TB	1½"	LB57 Body, Cover & Gasket
LB67CG-TB	2"	LB67 Body, Cover & Gasket
LL17CG-TB	½"	LL17 Body, Cover & Gasket
LL27CG-TB	¾"	LL27 Body, Cover & Gasket
LL37CG-TB	1"	LL37 Body, Cover & Gasket
LL47CG-TB	1¼"	LL47 Body, Cover & Gasket
LL57CG-TB	1½"	LL57 Body, Cover & Gasket
LL67CG-TB	2"	LL67 Body, Cover & Gasket
LR17CG-TB	½"	LR17 Body, Cover & Gasket
LR27CG-TB	¾"	LR27 Body, Cover & Gasket
LR37CG-TB	1"	LR37 Body, Cover & Gasket
LR47CG-TB	1¼"	LR47 Body, Cover & Gasket
LR57CG-TB	1½"	LR57 Body, Cover & Gasket
LR67CG-TB	2"	LR67 Body, Cover & Gasket
T17CG-TB	½"	T17 Body, Cover & Gasket
T27CG-TB	¾"	T27 Body, Cover & Gasket
T37CG-TB	1"	T37 Body, Cover & Gasket
T47CG-TB	1¼"	T47 Body, Cover & Gasket
T57CG-TB	1½"	T57 Body, Cover & Gasket
T67CG-TB	2"	T67 Body, Cover & Gasket
TB17CG-TB	½"	TB17 Body, Cover & Gasket
TB27CG-TB	¾"	TB27 Body, Cover & Gasket
TB37CG-TB	1"	TB37 Body, Cover & Gasket
TB47CG-TB	1¼"	TB47 Body, Cover & Gasket
TB57CG-TB	1½"	TB57 Body, Cover & Gasket
TB67CG-TB	2"	TB67 Body, Cover & Gasket
X17CG-TB	½"	X17 Body, Cover & Gasket
X27CG-TB	¾"	X27 Body, Cover & Gasket
X37CG-TB	1"	X37 Body, Cover & Gasket
X47CG-TB	1¼"	X47 Body, Cover & Gasket
X57CG-TB	1½"	X57 Body, Cover & Gasket
X67CG-TB	2"	X67 Body, Cover & Gasket

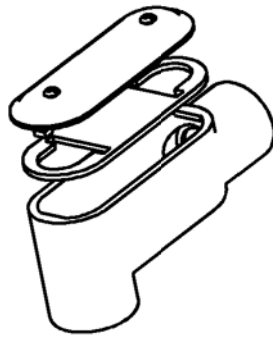
For aluminum conduit bodies pre-assembled with covers and gaskets, request Red•Dot® D-PAK® Series Conduit Bodies for rigid and IMC conduit.



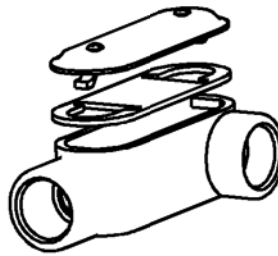
T&B Conduit Bodies



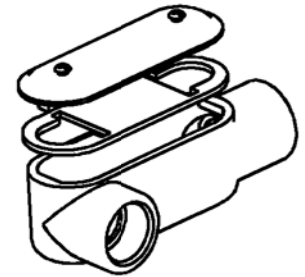
STYLE "C"



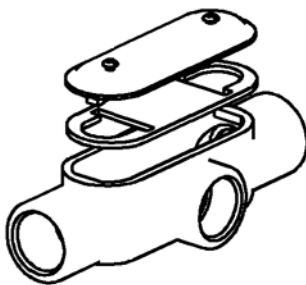
STYLE "LB"



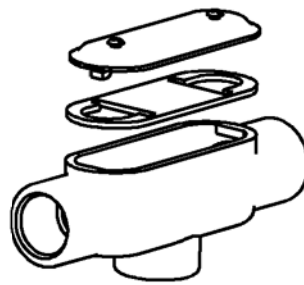
STYLE "LL"



STYLE "LR"



STYLE "T"



STYLE "TB"



STYLE "X"

NOTES:

1. MATERIAL: CONDUIT BODY- CLASS 30 GRAY IRON
COVER- CARBON STEEL
GASKET- NEOPRENE
SCREWS- STAINLESS STEEL
2. FINISH: CONDUIT BODY- ELECTRO ZINC PLATE WITH ALUMINUM ACRYLIC PAINT
COVER- ELECTRO ZINC PLATE
3. ALL CONDUIT BODY ASEMBLIES LISTED FOR WET LOCATIONS
4. FOR DIMENSIONAL DATA, SEE SHEETS 2 THRU 5

SIZE	CATALOG NUMBER						
1/2"	C17CG-TB	LB17CG-TB	LL17CG-TB	LR17CG-TB	T17CG-TB	TB17CG-TB	X17CG-TB
3/4"	C27CG-TB	LB27CG-TB	LL27CG-TB	LR27CG-TB	T27CG-TB	TB27CG-TB	X27CG-TB
1"	C37CG-TB	LB37CG-TB	LL37CG-TB	LR37CG-TB	T37CG-TB	TB37CG-TB	X37CG-TB
1-1/4"	C47CG-TB	LB47CG-TB	LL47CG-TB	LR47CG-TB	T47CG-TB	TB47CG-TB	X47CG-TB
1-1/2"	C57CG-TB	LB57CG-TB	LL57CG-TB	LR57CG-TB	T57CG-TB	TB57CG-TB	X57CG-TB
2"	C67CG-TB	LB67CG-TB	LL67CG-TB	LR67CG-TB	T67CG-TB	TB67CG-TB	X67CG-TB

GENERAL NOTES

1. ALL DIMENSIONS ARE FOR REFERENCE ONLY.
2. DIMENSIONS IN BRACKETS [] ARE IN METRIC UNITS.

REVISIONS

- | | |
|---|---|
| 1 | SEE ERN 2004151 FOR APPROVAL SIGNATURES & RELEASE DATE.
PROJECT NO: RM401818 |
|---|---|

Thomas & Betts
www.tnb.com

DESCRIPTION:

CONDUIT BODIES WITH COVERS AND GASKETS

ORIGINAL PROJECT NO / (ERN NO)

RM401818 / (2002982)

SHEET NO:

1 OF 5

REV. NO:

1

DRAWING NO:

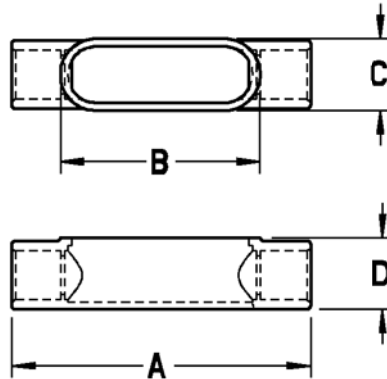
WSD-000056



T&B Conduit Bodies

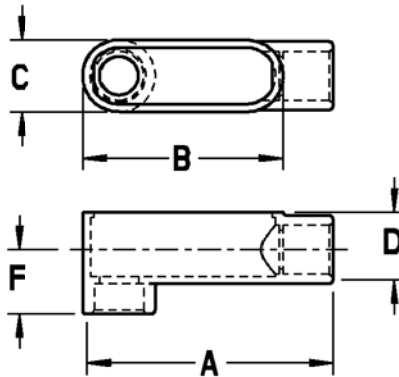


STYLE "C"



SIZE	A	B	C	D	VOLUME CUBIC INCH
1/2"	5.450 [138.43]	3.810 [96.77]	1.450 [36.83]	1.400 [35.56]	4.0 [65.55]
3/4"	6.040 [153.42]	4.480 [113.79]	1.650 [41.91]	1.660 [42.16]	6.6 [108.15]
1"	6.740 [171.2]	5.200 [132.08]	1.780 [45.21]	1.900 [48.26]	10.6 [173.7]
1-1/4"	7.300 [185.42]	5.580 [141.74]	2.200 [55.88]	2.350 [59.69]	19.1 [312.99]
1-1/2"	8.570 [217.68]	5.940 [150.88]	2.450 [62.23]	2.540 [64.52]	26.8 [439.17]
2"	9.480 [240.79]	7.080 [179.83]	3.060 [77.72]	3.000 [76.2]	50.0 [819.35]

STYLE "LB"



SIZE	A	B	C	D	F	VOLUME CUBIC INCH
1/2"	4.620 [117.35]	3.810 [96.77]	1.450 [36.83]	1.400 [35.56]	1.420 [36.07]	4.0 [65.55]
3/4"	5.250 [133.35]	4.480 [113.79]	1.650 [41.91]	1.660 [42.16]	1.540 [39.12]	6.6 [108.15]
1"	6.020 [152.91]	5.200 [132.08]	1.780 [45.21]	1.900 [48.26]	1.670 [42.42]	10.6 [173.7]
1-1/4"	6.440 [163.58]	5.580 [141.74]	2.200 [55.88]	2.350 [59.69]	1.960 [49.78]	18.8 [308.08]
1-1/2"	7.260 [184.4]	5.940 [150.88]	2.450 [62.23]	2.540 [64.52]	2.540 [64.52]	26.4 [432.62]
2"	8.280 [210.31]	7.080 [179.83]	3.060 [77.72]	3.000 [76.2]	2.680 [68.07]	51.0 [835.75]

GENERAL NOTES

- ALL DIMENSIONS ARE FOR REFERENCE ONLY.
- DIMENSIONS IN BRACKETS [] ARE IN METRIC UNITS.

REVISIONS

1 SEE ERN 2004151 FOR APPROVAL SIGNATURES & RELEASE DATE. PROJECT NO: RM401818

Thomas & Betts
www.tnb.com

DESCRIPTION:

CONDUIT BODIES WITH COVERS AND GASKETS

ORIGINAL PROJECT NO / (ERN NO)

RM401818 / (2002982)

SHEET NO:

2 OF 5

REV. NO:

1

DRAWING NO:

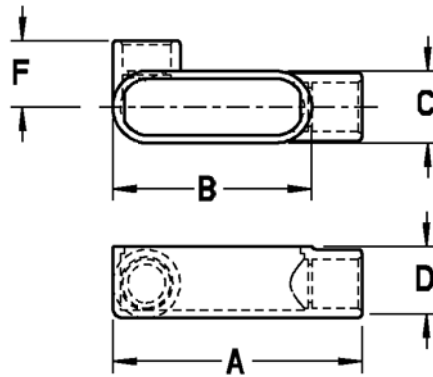
WSD-000056



T&B Conduit Bodies

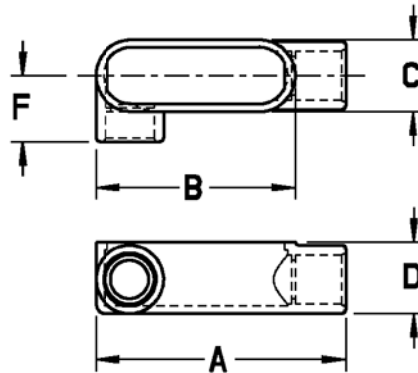


STYLE "LL"



SIZE	A	B	C	D	F	VOLUME CUBIC INCH
1/2"	4.620 [117.35]	3.810 [96.77]	1.450 [36.83]	1.400 [35.56]	1.480 [37.59]	4.0 [65.55]
3/4"	5.250 [133.35]	4.480 [113.79]	1.650 [41.91]	1.660 [42.16]	1.610 [40.89]	6.6 [108.15]
1"	6.020 [152.91]	5.200 [132.08]	1.780 [45.21]	1.900 [48.26]	1.690 [42.93]	10.6 [173.7]
1-1/4"	6.440 [163.58]	5.580 [141.74]	2.200 [55.88]	2.350 [59.69]	1.960 [49.78]	18.8 [308.08]
1-1/2"	6.435 [163.45]	5.940 [150.88]	2.450 [62.23]	2.540 [64.52]	2.540 [64.52]	26.2 [429.34]
2"	8.280 [210.31]	7.080 [179.83]	3.060 [77.72]	3.000 [76.2]	2.730 [69.34]	51.0 [835.75]

STYLE "LR"



SIZE	A	B	C	D	F	VOLUME CUBIC INCH
1/2"	4.620 [117.35]	3.810 [96.77]	1.450 [36.83]	1.400 [35.56]	1.480 [37.59]	4.0 [65.55]
3/4"	5.250 [133.35]	4.480 [113.79]	1.650 [41.91]	1.660 [42.16]	1.610 [40.89]	6.6 [108.15]
1"	6.020 [152.91]	5.200 [132.08]	1.780 [45.21]	1.900 [48.26]	1.690 [42.93]	10.6 [173.7]
1-1/4"	6.440 [163.58]	5.580 [141.74]	2.200 [55.88]	2.350 [59.69]	1.960 [49.78]	18.8 [308.08]
1-1/2"	6.435 [163.45]	5.940 [150.88]	2.450 [62.23]	2.540 [64.52]	2.540 [64.52]	26.2 [429.34]
2"	8.280 [210.31]	7.080 [179.83]	3.060 [77.72]	3.000 [76.2]	2.730 [69.34]	51.0 [835.75]

GENERAL NOTES

- ALL DIMENSIONS ARE FOR REFERENCE ONLY.
- DIMENSIONS IN BRACKETS [] ARE IN METRIC UNITS.

REVISIONS

1. SEE ERN 4014151 FOR APPROVAL SIGNATURES & RELEASE DATE. PROJECT NO: RM401818

Thomas & Betts
www.tnb.com

DESCRIPTION:

**CONDUIT BODIES WITH
COVERS AND GASKETS**

ORIGINAL PROJECT NO / (ERN NO)

RM401818 / (2002982)

SHEET NO:

3 OF 5

REV. NO:

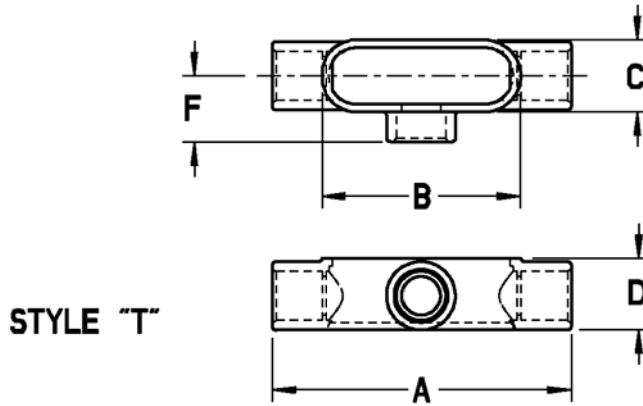
1

DRAWING NO:

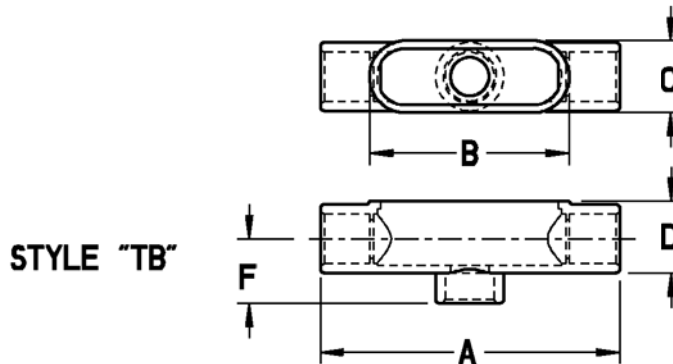
WSD-000056



T&B Conduit Bodies



SIZE	A	B	C	D	F	VOLUME CUBIC INCH
1/2"	5.570 [141.48]	3.840 [97.54]	1.620 [41.15]	1.780 [45.21]	1.540 [39.12]	6.0 [98.32]
3/4"	6.190 [157.23]	4.460 [113.28]	1.800 [45.72]	2.000 [50.8]	1.690 [42.93]	9.1 [149.12]
1"	7.350 [186.69]	5.200 [132.08]	2.300 [58.42]	2.280 [58.91]	1.950 [49.53]	16.9 [276.94]
1-1/4"	7.300 [185.42]	5.580 [141.74]	2.200 [55.88]	2.350 [59.69]	1.960 [49.78]	19.3 [316.27]
1-1/2"	8.570 [217.68]	5.940 [150.88]	2.450 [62.23]	2.540 [64.52]	2.540 [64.52]	27.5 [450.64]
2"	9.480 [240.79]	7.080 [179.83]	3.060 [77.72]	3.200 [81.28]	2.730 [69.34]	50.0 [819.35]



SIZE	A	B	C	D	F	VOLUME CUBIC INCH
1/2"	5.570 [141.48]	3.840 [97.54]	1.620 [41.15]	1.780 [45.21]	1.420 [36.07]	6.0 [98.32]
3/4"	6.190 [157.23]	4.460 [113.28]	1.800 [45.72]	2.000 [50.8]	1.540 [39.12]	9.1 [149.12]
1"	7.350 [186.69]	5.200 [132.08]	2.300 [58.42]	2.280 [58.91]	1.670 [42.42]	16.9 [276.94]
1-1/4"	7.300 [185.42]	5.580 [141.74]	2.200 [55.88]	2.350 [59.69]	1.960 [49.78]	19.3 [316.27]
1-1/2"	8.570 [217.68]	5.940 [150.88]	2.450 [62.23]	2.540 [64.52]	2.540 [64.52]	27.5 [450.64]
2"	9.480 [240.79]	7.080 [179.83]	3.060 [77.72]	3.000 [76.2]	2.680 [68.07]	52.8 [865.24]

GENERAL NOTES

1. ALL DIMENSIONS ARE FOR REFERENCE ONLY.
2. DIMENSIONS IN BRACKETS [] ARE IN METRIC UNITS.

REVISIONS

- | | |
|---|--|
| 1 | SEE ERN 2004151 FOR APPROVAL SIGNATURES & RELEASE DATE. PROJECT NO: RM401818 |
|---|--|

Thomas & Betts
www.tnb.com

DESCRIPTION:

CONDUIT BODIES WITH COVERS AND GASKETS

ORIGINAL PROJECT NO / (ERN NO)

RM401818 / (2002982)

SHEET NO:

4 OF 5

REV. NO:

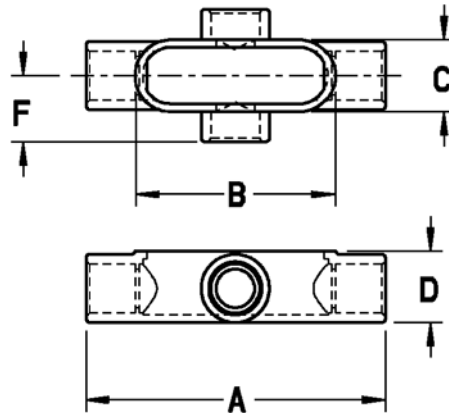
1

DRAWING NO:

WSD-000056



T&B Conduit Bodies



STYLE "X"

SIZE	A	B	C	D	F	VOLUME CUBIC INCH
1/2"	5.570 [141.48]	3.840 [97.54]	1.620 [41.15]	1.780 [45.21]	1.540 [39.12]	6.0 [98.32]
3/4"	6.190 [157.23]	4.460 [113.28]	1.800 [45.72]	2.000 [50.8]	1.690 [42.93]	9.1 [149.12]
1"	7.350 [186.69]	5.200 [132.08]	2.300 [58.42]	1.900 [48.26]	1.950 [49.53]	16.9 [276.94]
1-1/4"	7.300 [185.42]	5.580 [141.74]	2.200 [55.88]	2.350 [59.69]	1.960 [49.78]	19.3 [316.27]
1-1/2"	8.570 [217.68]	5.940 [150.88]	2.450 [62.23]	2.540 [64.52]	2.540 [64.52]	27.5 [450.64]
2"	9.480 [240.79]	7.080 [179.83]	3.060 [77.72]	3.000 [76.2]	2.730 [69.34]	52.8 [865.24]

GENERAL NOTES

- ALL DIMENSIONS ARE FOR REFERENCE ONLY.
- DIMENSIONS IN BRACKETS [] ARE IN METRIC UNITS.

REVISIONS

- | | |
|---|--|
| 1 | SEE ERN 204151 FOR APPROVAL SIGNATURES & RELEASE DATE.
PROJECT NO: RM401818 |
|---|--|

Thomas & Betts
www.tnb.com

DESCRIPTION:

**CONDUIT BODIES WITH
COVERS AND GASKETS**

ORIGINAL PROJECT NO / (ERN NO)

RM401818 / (2002982)

SHEET NO:

5 OF 5

REV. NO:

1

DRAWING NO:

WSD-000056