



Main

Range of product	Lexium linear motion
Product or component type	Shaft journal
Product specific application	To connect an encoder and third-party application specific drive
Accessory / separate part category	Maintenance accessories

Complementary

Product compatibility	PAS 42 linear axis 60 x 60 mm[RETURN]CAS 42 linear axis 60 x 60 mm
Range compatibility	Lexium PAS Lexium CAS
Product weight	0.16 lb(US) (0.073 kg)
Maximum radial force Fr	400 N
Inertia	0.005 kgcm ²
Torque value	315.97 lbf.in (35.7 N.m)

Ordering and shipping details

Category	18233-LINEAR MOTION ACCESSORIES
Discount Schedule	PC57
GTIN	3606485220048
Returnability	No
Country of origin	DE

Packing Units

Unit Type of Package 1	PCE
Number of Units in Package 1	1
Package 1 Height	2.36 in (6.0 cm)
Package 1 Width	6.30 in (16.0 cm)
Package 1 Length	4.72 in (12.0 cm)
Package 1 Weight	6.10 oz (173.0 g)
Unit Type of Package 2	S04
Number of Units in Package 2	36
Package 2 Height	11.81 in (30.0 cm)
Package 2 Width	15.75 in (40.0 cm)
Package 2 Length	23.62 in (60.0 cm)
Package 2 Weight	15.43 lb(US) (7.0 kg)

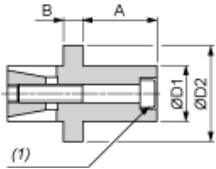
Offer Sustainability

California proposition 65	WARNING: This product can expose you to chemicals including: Lead and lead compounds, which is known to the State of California to cause cancer and birth defects or other reproductive harm. For more information go to www.P65Warnings.ca.gov
REACH Regulation	REACH Declaration
REACH free of SVHC	Yes
EU RoHS Directive	Pro-active compliance (Product out of EU RoHS legal scope) EU RoHS Declaration
Toxic heavy metal free	Yes
Mercury free	Yes
China RoHS Regulation	China RoHS Declaration
RoHS exemption information	Yes
PVC free	Yes

Contractual warranty

Warranty	18 months
----------	-----------

Dimensions



Dimensions in mm

A	B	ØD1	ØD2	ISO 4762 screw (1)
27	7	20	35	M6

Dimensions in in.

A	B	ØD1	ØD2	ISO 4762 screw (1)
1.06	0.27	0.79	1.38	M6