

SE Series

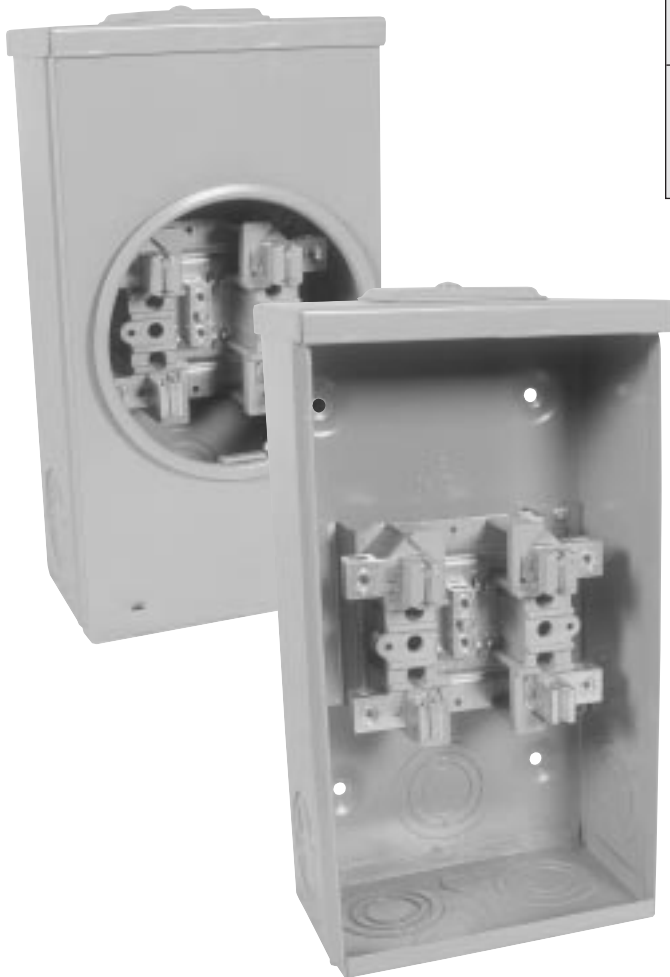
100 AMP - 600 VOLTS King Size



CATALOGUE #	DESCRIPTION	WEIGHT
SE400PW	Overhead, hub opening, hub plate not included	8 lbs.
SE400JW	Overhead c/w 1 1/4" hub	8 lbs.
SE400TW	Underground blank top	8 lbs.
SE400RW	Combination overhead / underground	8 lbs.
SE400BW	Overhead c/w twin 1 1/4" hubs	9 lbs.
SE400BP	Overhead twin closure plates not included	8 lbs.
SE420RW	Combination OH/UG c/w water heater lugs	8 lbs.

- Conductor range No. 6 - 1/0 AWG CU/AL
- CSA weatherproof enclosure 3
- Approved for copper or aluminum
- For extra ground lug on neutral add suffix NB - Used in New Brunswick

- Field adaptable accessories
- 5th Jaw at 9 O'clock - **SXK503**
- Insulated neutral - **ink 100**
- 5th Jaw at 6 O'clock - **ink 105**



KNOCKOUT CODE	CONDUIT SIZE
AA	1/2"
D	1 1/4", 1 1/2", 2"
E	1", 1 1/4", 1 1/2", 2"

