

Keywerks CAT6 FTP Keystone Module (jacks)

Keywerks™ CAT6 FTP Keystone Modular Jacks provide outstanding performance in installation environments where alien crosstalk, EMI and RFI impairments are a concern. Precision engineered and manufactured, these FTP Modular Jacks utilize zinc-alloy housings and Wirewerks' unique 'termination cap' to protect against interference and noise coupling, and are fully compatible with all Keywerks FTP products as well as any other industry-standard FTP Keystone-format faceplates, patch panels and surface mount boxes.

Description

Keywerks™ CAT6 FTP Keystone Modular Jacks support IEEE 10/100/1000BASE-T Gigabit Ethernet networking and are fully compliant with the CAT6 cabling specifications of TIA T568-C.2. These modular jacks offer a 180° IDC termination interface supporting both T568A and T568B wiring schemes and utilize angled termination towers to simplify pair-splitting and reduce installation time. The IDC contact blades are designed with a unique locking mechanism to improve wire retention for better installation and greater operational reliability. In combination with our Keywerks™ FastPunch™ tool (not included), these jacks may be terminated in one easy step, reducing installation time while improving installation quality and reliability.

Features and Benefits

Compact design allows for high density mounting in floor-space critical environments

Accepts 6 and 8 pin modular plugs for greater flexibility

Backward compatibility with CAT5e connectors supports network migrations

Compatible with T568A and T568B wiring schemes for greater flexibility

Snap-in mechanism fits all Keystone-format openings for flexibility and cost savings

Angled termination tower for easy pair-splitting and faster installation

IDC contact blades with wire locking mechanism improves installation quality and operational reliability

Installation Manual included

Colored Dust Cap available

Applications

Telecommunications Room

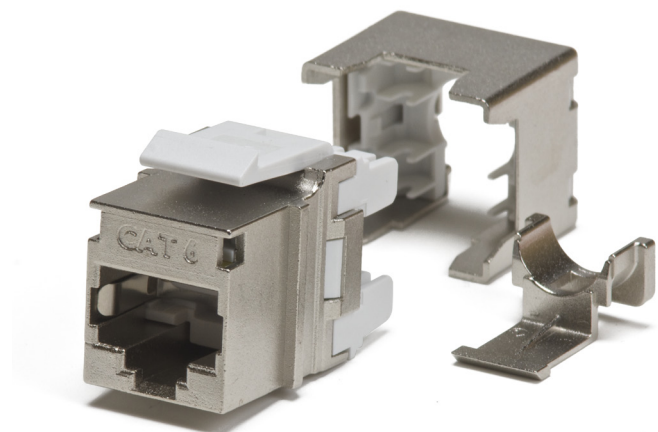
Equipment Room

Data Centers

Work Area outlets

Consolidation Point

Cellular Tower Base Station



Keywerks CAT6 FTP Keystone Module (jacks) **wirewerks**

Certification and Compliance

ANSI/TIA-568-C.2	Balanced Twisted-Pair Telecommunication Cabling and Components Standards.
ISO/IEC 11801	Generic Cabling for Customer Premises.
ANSI/TIA-968-A	Technical Requirements for Connection of Terminal Equipment to the telephone Network.
IEC 60603-7	Connectors for Electronic Equipment.
FCC 47 part 68	Connection of the Terminal Equipment to the Telephone Network.
UL 94	Tests for Flammability of Plastic Material for Parts in Devices and Appliances.
UL	Underwriters Labs (Bi-national Canada, US) Listed Communication Circuit Accessories
ETL Verified	To ANSI/TIA-568-C.2 with Applicable Electrical Transmission Characteristics.
RoHS	Directive on Restriction of Hazardous Substances.

Part Number

KW-CS6-45B

Description

Keywerks RJ45 CAT6 FTP Module, back termination, T568A/B

Packaging

Clear Poly bag: 1 unit per bag
1 Termination Cap
1 side clip
1 tie wrap
Instruction Manual

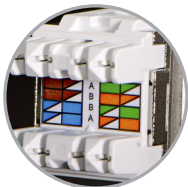
Physical Characteristics



Colored Dustcap Available

Parameter	Value
Housing Material	Zinc alloy
Contact Material RJ45	Phosphor Bronze alloy with 50µin Gold plating
Contact Material IDC	Phosphor Bronze alloy with 100µin Tin plating
Overall Dimensions	37.1 mm (1.46 in) x 16.3 mm (0.6 in) x 14.6 mm (0.5 in)

Mechanical Characteristics



T568A/B wiring schemes

Parameter	Value
Operating Temperature	-40° C (-40° F) ~ 60° C (140° F)
Storage Temperature	-40° C (-40° F) ~ 125° C (257° F)
Plug Retention	50 N (11 lbf) for 60 seconds
IDC Gauge Capacity	22~24 AWG solid conductors
Number of Insertions IDC	≥ 10 insertions
Mating Cycles RJ45	≥750 cycles

Electrical Characteristics



Blades' locking mechanism

Parameter	Value
Insulation Resistance	200 MΩ minimum
Dielectric Withstanding Voltage	1,000 V RMS at 60 Hz for 60 seconds
Current Rating	1.5 A maximum
Contact Resistance	1 mΩ maximum
Insertion Loss Worst Pair @ 250 MHz	0.32 dB
NEXT Worst Pair-to-Pair @ 250 MHz	46.0 dB
FEXT Worst Pair-to-Pair @ 250 MHz	35.1 dB
Return Loss @ 250 MHz	20.0 dB



Wires held in place

FTP modules are compatible with Wirewerks FastPunch Tool

KW-FPTOOL

