

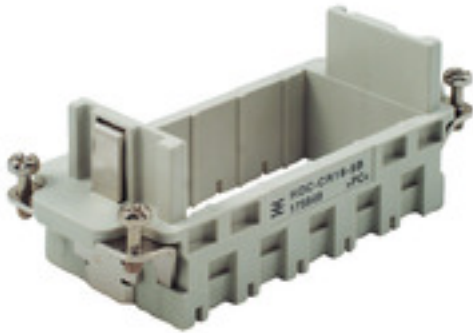
**HDC-CR16-5B GR****Weidmüller Interface GmbH & Co. KG**

Klingenbergstraße 26

D-32758 Detmold

Germany

www.weidmueller.com



The sturdy CR16 module frames are available in polycarbonate or die-cast zinc.

The frames are designed so that 5 individual modules or corresponding double modules can be installed. The CR16 frames are designed to fit the size-6 housings.

**General ordering data**

Version	Heavy-duty connectors, HDC insert, ConCept frame
Order No.	<a href="#">1758490000</a>
Type	HDC-CR16-5B GR
GTIN (EAN)	4032248019717
Qty.	5 pc(s).

## HDC-CR16-5B GR

**Weidmüller Interface GmbH & Co. KG**

Klingenbergstraße 26

D-32758 Detmold

Germany

www.weidmueller.com

## Technical data

### Dimensions and weights

Depth	84.5 mm	Depth (inches)	3.327 inch
Height	35 mm	Height (inches)	1.378 inch
Width	34 mm	Width (inches)	1.339 inch
Net weight	29.94 g		

### Temperatures

Limit temperature	-40 °C ... 125 °C
-------------------	-------------------

### ConCept Pneumatic module

Colour	beige	UL 94 flammability rating	V-0
--------	-------	---------------------------	-----

### Dimensions

Height of socket	35 mm	Total length base	84.5 mm
Width	34 mm		

### General data

BG	6	Colour	beige
Free from halogens	false	Low smoke acc. DIN EN 45545-2	Yes
Material	Polycarbonate	Number of poles	1
Series	ConCept frame	Size	6
Type	Female	UL 94 flammability rating	V-0

### Connection data PE

Connection type PE	Screw connection	Tightening torque, max. PE connection	1.5 Nm
Tightening torque, min. PE connection	1.2 Nm		

### Version

BG	6	Material	Polycarbonate
Size	6	Wire connection cross section AWG, max.	AWG 14

### Classifications

ETIM 6.0	EC002312	ETIM 7.0	EC002312
ETIM 8.0	EC002312	ETIM 9.0	EC002312
ECLASS 9.0	27-44-02-06	ECLASS 9.1	27-44-02-06
ECLASS 10.0	27-44-02-06	ECLASS 11.0	27-44-02-06
ECLASS 12.0	27-44-02-92	ECLASS 13.0	27-44-02-92
ECLASS 14.0	27-44-02-92		

### Environmental Product Compliance

RoHS Compliance Status	Compliant without exemption
REACH SVHC	Potassium perfluorobutane sulfonate 29420-49-3
SCIP	2f94735a-9fba-4903-842f-4fb9aa902310

**Data sheet****HDC-CR16-5B GR**

**Weidmüller Interface GmbH & Co. KG**  
Klingenbergstraße 26  
D-32758 Detmold  
Germany

[www.weidmueller.com](http://www.weidmueller.com)

**Technical data****Approvals**

ROHS	Conform
------	---------

**Downloads**

Engineering Data	<a href="#">CAD data – STEP</a>
Catalogues	<a href="#">Catalogues in PDF-format</a>
Brochures	<a href="#">FL FIELDWIRING EN</a>

**Data sheet**

**HDC-CR16-5B GR**

**Weidmüller Interface GmbH & Co. KG**  
Klingenbergstraße 26  
D-32758 Detmold  
Germany

[www.weidmueller.com](http://www.weidmueller.com)

**Drawings**

