

# TLS 2200® Thermal Label Printer

www.BradyID.com/tls2200

Portable Label Printers



## TLS2200® THERMAL LABELING SYSTEM

Brady's TLS2200® Thermal Label Printer is a rugged, portable, and easy-to-use labeling solution. With crisp, thermal-transfer quality printing and a variety of durable materials, you can create custom labels for the most demanding applications including product barcode ID, electrical and datacomm marking, laboratory ID, security ID, and more.

- Permanent, Quick, Crisp Labels
- Built-in Electrical and Voice/Data Symbols
- Autotext Sizing TLS 2200® reads your label size and style, selects the most suitable type size, and instantly registers it for printing
- Variable Font Sizes from 1 (4 pt) to 19 (72 pt)



### Online Video!

Visit [www.BradyID.com/tls2200](http://www.BradyID.com/tls2200) or scan this code for more



information or to view an online printer demo video.

### Your Complete Printing Solution:

TLS 2200 Material Rolls.....Page 38  
 TLS 2200 Print Ribbons.....Page 67

Part Number	Description
TLS2200	Printer*
113340	Printer* with Brady@360 Plan
TLS2200-AC	AC Power Supply
TLSHM-QUICKCH	Battery Quick Charger

\*Printer purchase includes hard case, battery pack, battery charger, test labels (PTL-19-423), R6210 ribbon, cleaning strip, communications cable, manual, Quick Start Guide and 1 year Limited Warranty.



### TLS 2200 Printer Specifications

Max Labels Per Day	750 labels/day
Print Resolution	203 dpi
Print Technology	Thermal Transfer
Print Speed	12 mm/sec (0.47 in/sec)
Tape Widths (in)	Various sizes from 0.25" to 2.00"
Tape Widths (mm)	Various sizes from 6.4 to 50.8 mm
Max Label Width	2.00" (50.8mm)
Max Print Width	1.810" (46.0mm)
Memory	21,000 characters
Materials Supported	Continuous, Die Cut, Bulk, Over 500 Stock Parts and Custom
Continuous vs Die Cut Labels	Continuous and die cut labels
PC Connectivity	Yes
Software Compatibility	LabelMark™ / CodeSoft™ Software
Data Transfer from PC to printer	No
Wireless Connectivity	No
Stand Alone Printing	Yes
Connectivity Options	Serial
Color Capability	Single Color Printing
Keyboard	ABC
Backlit Screen	No
Text Sizes	1 to 19 (4 to 72 point)
Multi-Line Print	Yes
Print Rotation	Yes
Serialization	Yes
Barcode	128, IFT 25, Codabar
Symbols	44 on keypad
Portability	Yes
Label Types or Application Functions	Banner Portrait, Banner Landscape, Wire, Patch Panel, Terminal Block, Desi Strip, Fixed Length
Applications	Circuit Board Labeling, Data Communications Labeling, Facility, Safety & Maintenance Identification, General & Industrial Labeling, Laboratory Identification, Panel Identification, Security Identification, Wire & Cable Marking
Power Supply	Rechargeable Battery, AC Power (optional)
Weight	2.75 lbs (1.25kg)
Warranty	12 months - See Terms and Conditions



### Brady 360® Replacement Printer Plan

supplements the Limited Warranty already included with your printer purchase. This Replacement Plan allows you can return your qualified printer for a replacement printer within the first 12 months of purchase. You must purchase the replacement program at the time of printer purchase in order to receive benefits.

\*Printheads are covered. \*Limit of two printers in the first 12 months of initial purchase.

## Create Custom Labels In Seconds



Wire & Cable Labeling



Voice & Data Communications



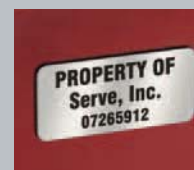
Industrial Barcode Labels



Asset ID



Circuit Board Materials



General ID  
...and many more!