



*Quality Products. Service Excellence.*

## Horizontal Finger Cable Manager *RB-HFMD Series*



### Features

- Metal components constructed in 16-gauge steel.
- Fingers constructed in black plastic.
- Snap-on, hinged door.
- Includes cutouts at rear for cable pass-through.
- Fits standard EIA compliant mounting rails.
- Metal components finished in textured black powder paint.
- Requires mounting hardware.
- TAA compliant for GSA Schedule purchases.
- RoHS Compliant.
- Manufactured in North America.

**RACK BASICS®**

Part of the Rack Basics® line of economy rack solutions.



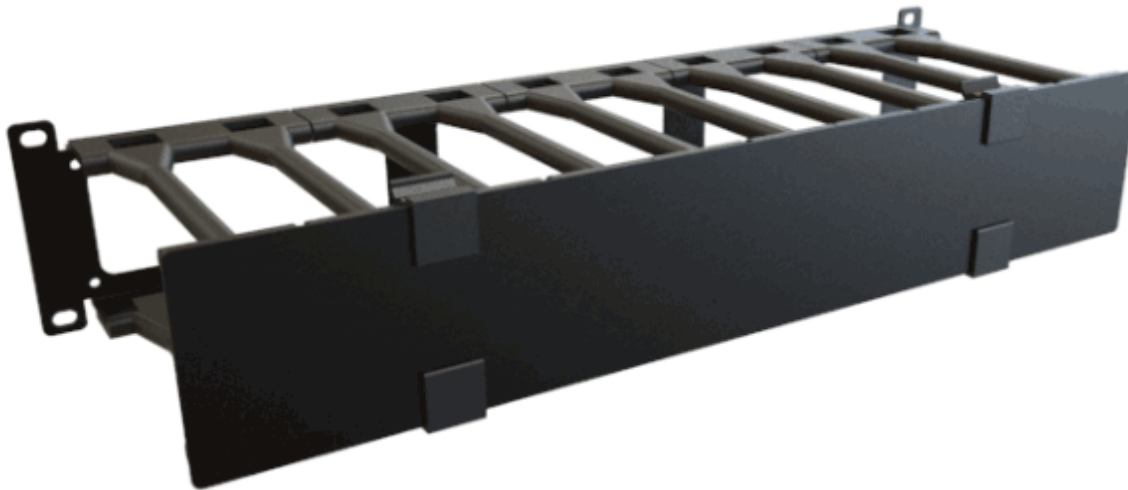
### Gallery



### Accessories

- Mounting Hardware
- Hook and Loop Roll





| Part No. | Overall Dinmensions |       |       | Usable Mounting Dimensions |        |
|----------|---------------------|-------|-------|----------------------------|--------|
|          | Height              | Width | Depth | Rack Units                 | Height |
| RB-HFMD1 | 1.47                | 19.00 | 6.50  | 1U                         | 1.75   |
| RB-HFMD2 | 3.22                | 19.00 | 6.50  | 2U                         | 3.50   |
| RB-HFMD3 | 5.22                | 19.00 | 6.50  | 3U                         | 5.25   |
| RB-HFMD4 | 6.97                | 19.00 | 6.50  | 4U                         | 7.00   |

**Estimated Cable Fill Capacities**

| Rack Units | Description       | Recommended Cable Fill (50% Fill Ratio) |        | Maximum Cable Fill (100% Fill Ratio) |        |
|------------|-------------------|---|--------|--------------------------------------|--------|
|            |                   | Cat 6                                   | Cat 6a | Cat 6                                | Cat 6a |
| RB-HFMD1   | Channel Opening   | 31                                      | 21     | 61                                   | 42     |
|            | Finger Opening    | 32                                      | 22     | 64                                   | 45     |
|            | Rear Pass Through | 19                                      | 13     | 39                                   | 27     |
| RB-HFMD2   | Channel Opening   | 89                                      | 62     | 177                                  | 123    |
|            | Finger Opening    | 32                                      | 22     | 64                                   | 45     |
|            | Rear Pass Through | 47                                      | 33     | 94                                   | 65     |
| RB-HFMD3   | Channel Opening   | 138                                     | 96     | 276                                  | 192    |
|            | Finger Opening    | 32                                      | 22     | 64                                   | 45     |
|            | Rear Pass Through | 92                                      | 64     | 183                                  | 127    |
| RB-HFMD4   | Channel Opening   | 204                                     | 142    | 408                                  | 284    |
|            | Finger Opening    | 32                                      | 22     | 64                                   | 45     |
|            | Rear Pass Through | 92                                      | 64     | 183                                  | 127    |

*Data subject to change without notice*

© 2021. Hammond Manufacturing Ltd. All rights reserved.