

# Specifications

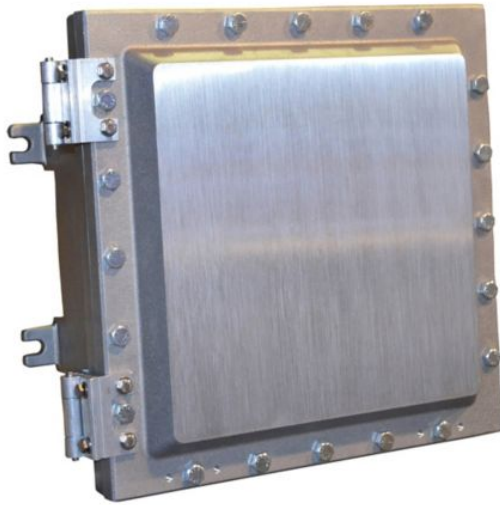


Photo is representative

## Eaton ECP243008

Eaton Crouse-Hinds series ECP enclosure, Square cover, 9-1/4" depth, 24" x 30" x 8", Copper-free aluminum, Tap-in mounting feet

### General specifications

<b>PRODUCT NAME</b>	Eaton Crouse-Hinds series ECP enclosure
<b>CATALOG NUMBER</b>	ECP243008
<b>UPC</b>	662276320215
<b>PRODUCT LENGTH/DEPTH</b>	30 in
<b>PRODUCT HEIGHT</b>	36 in
<b>PRODUCT WIDTH</b>	13.13 in
<b>PRODUCT WEIGHT</b>	428 lb



### Certifications and compliances

<b>AREA CLASSIFICATION</b>	Hazardous/Classified Locations
----------------------------	--------------------------------

### Product specifications

<b>ENCLOSURE SIZE</b>	24" x 30" x 8"
-----------------------	----------------

<b>STANDARDS TYPE</b>	NEC/CEC
<b>NEC HAZARDOUS RATING</b>	Class I, Division 1 Class I, Division 2 Class II, Division 1 Class II, Division 2 Class III
<b>NEMA RATING</b>	3 3R 4 7 9

<b>COVER TYPE</b>	Square
<b>DEPTH</b>	9-1/4 in
<b>MATERIAL</b>	Copper-free aluminum
<b>SPECIAL FEATURES</b>	Tap-in mounting feet

## Resources

### 3D CAD DRAWING PACKAGE

[Eaton Crouse-Hinds ECP243008 3D drawing](#)

### BROCHURES

[Crouse-Hinds series ECP Enclosures Brochure](#)

### CATALOGS

[Crouse-Hinds series ECP catalog page](#)

### CERTIFICATION REPORTS

[IECEX Certificate of Conformity](#)

[ECP Explosionproof Enclosures UL certification](#)

[Intertek EC-Type Examination Certificate](#)

### INSTALLATION INSTRUCTIONS

[IF 1107 - Mounting Plate Kit](#)

[IF 1639 - ECP Explosionproof Enclosures](#)

### SPECIFICATIONS AND DATASHEETS

[Eaton Specification Sheet - ECP243008](#)

[ECP Enclosures](#)

**PROJECT NAME:**

**PROJECT NUMBER:**

**PREPARED BY:**

**DATE:**



**Eaton Corporation plc**  
Eaton House  
30 Pembroke Road  
Dublin 4, Ireland  
Eaton.com

© 2025 Eaton. All Rights Reserved.

Eaton is a registered trademark.

Follow us on social media to get the latest product and support information.

All other trademarks are property of their respective owners.

