

# Condulet® Cable Outlet Boxes

## GRUE Series

Cl. I, Div. 1 & 2, Groups B, C, D NEMA 3, 4  
 Cl. II, Div. 1, Groups E, F, G  
 Cl. II, Div. 2, Groups F, G  
 Cl. III

3F

3F

### Applications:

The GRUE hazardous outlet box is intended for use within hazardous areas to:

- Terminate cable connectors
- Interconnect lengths of conduit
- Protect conductors in threaded rigid conduit
- Act as pull and splice boxes
- Change conduit direction
- Provide access to conductors for maintenance and future system changes

### Features:

- Five threaded hub locations; includes three close-up plugs
- Tapered threaded hubs to provide ground continuity
- Green ground screw
- Smooth, rounded internal bushing in each hub protects conductor installation
- External threaded body and jar style cover provides additional wiring room
- Cover threads are 16 pitch
- Cast ears on cover to permit easy removal and tightening
- Elevated mounting feet, enabling hubs to accept cable connector termination and removal when surface mounted
- No stand-offs required for mounting feet when installing larger potted barrier glands
- Neoprene o-ring standard to meet NEMA 4 requirements
- Copper-free aluminum body and cover provide resistance to corrosive atmospheres
- Surface cover furnished with box
- Sealing cover available with 3/4" hub

### Certifications and Compliances:

- NEC/CEC
  - Class I, Divisions 1 and 2, Groups B, C, D
  - Class II, Division 1, Groups E, F, G
  - Class II, Division 2, Groups F, G
  - Class III
- UL Standard: 1203
- ANSI Standard: C33.27
- CSA Standard: C22.2 No. 30
- NEMA 3, 4

### Options:

Description	Suffix
To order assembled with sealing cover .....	<b>SC</b>
1 Row, 4 Terminal Blocks .....	<b>TB14*</b>
1 Row, 6 Terminal Blocks .....	<b>TB16*</b>
1 Row, 8 Terminal Blocks .....	<b>TB18*</b>
1 Row, 4 Terminal Blocks .....	<b>DIN14†</b>
1 Row, 6 Terminal Blocks .....	<b>DIN16†</b>
1 Row, 8 Terminal Blocks .....	<b>DIN18†</b>

### Replacement Parts:

Description	
5" diameter sealing cover.....	<b>GRUE092</b>
5" diameter blank replacement cover .....	<b>GRUE09</b>



### Standard Material:

- Body and cover – copper-free aluminum

### Standard Finish:

- Aluminum – natural

### Size Ranges:

- Hub – 1/2" to 1"
- Cover opening – 5" diameter

### Ordering Information:

Hub Size	Cat. #
1/2"	<b>GRUE19</b>
3/4"	<b>GRUE29</b>
1"	<b>GRUE39</b>

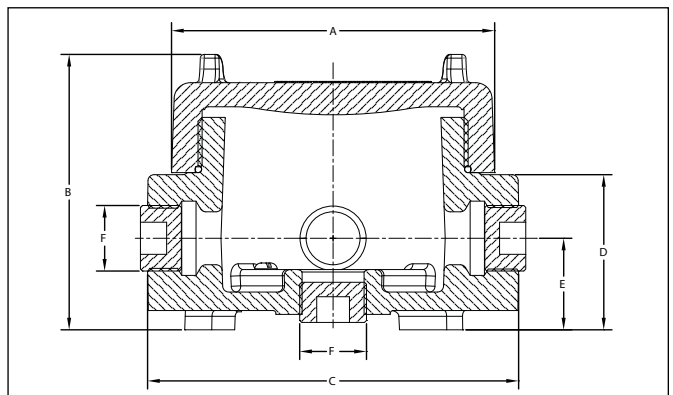
### Flat Cover:

Cover Opening Dia.	Cat. #
5	<b>GRUE09</b>

### Sealing Cover:

Cover Opening Dia.	Cat. #
5	<b>GRUE092</b>

### Dimensions In Inches:



A	B	C	D	E	F
4-15/16	4-9/32	5-21/32	2-13/32	1-7/16	1/2" NPT
4-15/16	4-9/32	5-21/32	2-13/32	1-7/16	3/4" NPT
4-15/16	4-9/32	5-21/32	2-13/32	1-1/4	1" NPT

\*Products provide a 30 amp, 300V Phoenix G5/4 or G5/6 terminal block for wire size #10 AWG, directly mounted to a mounting strap.

†Products provide a 24 amp, 250V Phoenix MBK5 type terminal block for wire size #24 to #12 AWG mounted on a DIN rail.