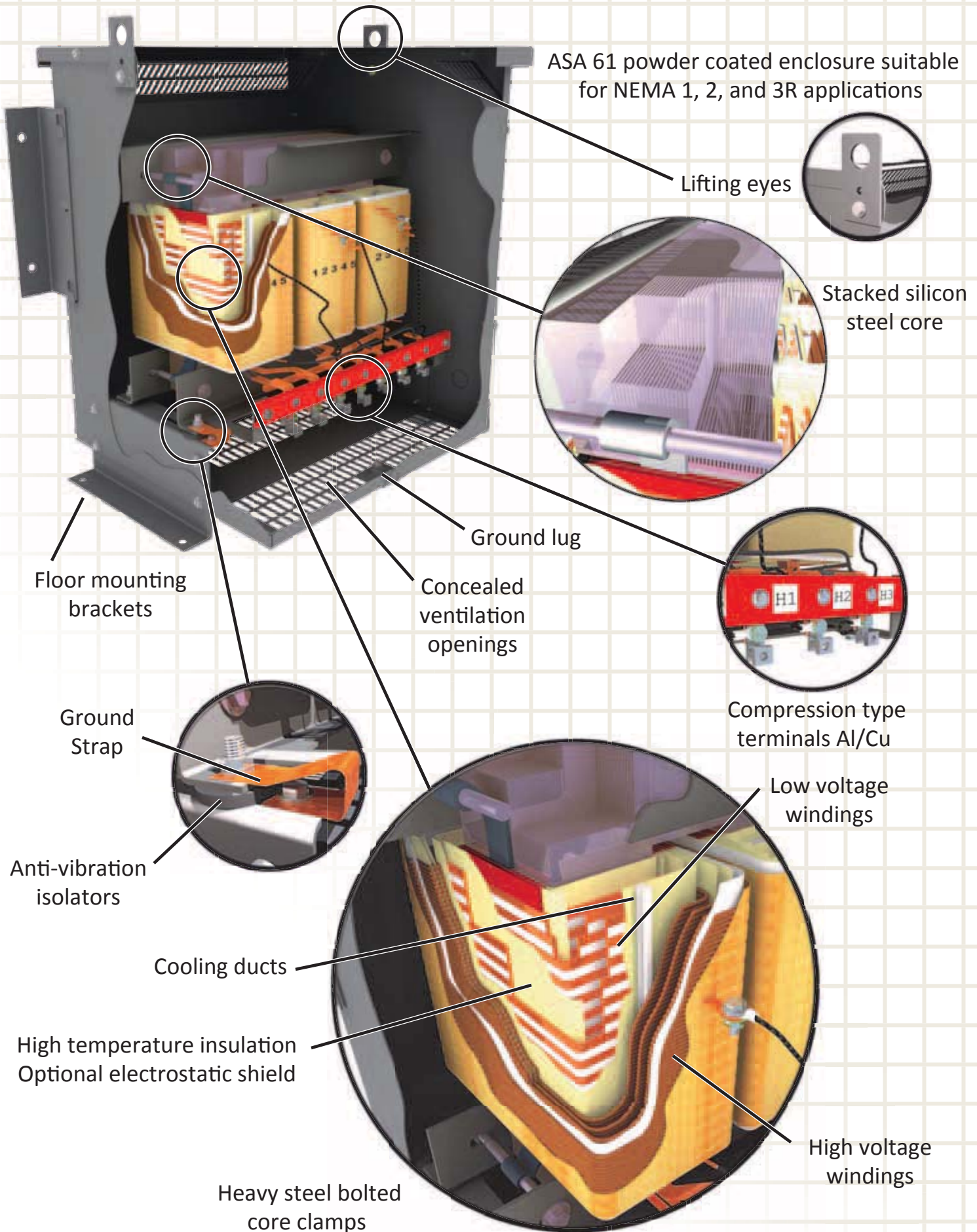


**STANDARD SPECIFICATION, 600 V CLASS, SINGLE AND THREE PHASE**



# SINGLE-PHASE ISOLATION (DOUBLE-WOUND) TRANSFORMERS

## APPLICATION

Isolation transformers should be used on all systems that require grounding on the load.

Rex single-phase distribution transformers are ideal for supplying auxiliary lighting circuits from 600 V and lower supplies, and electric heating equipment.

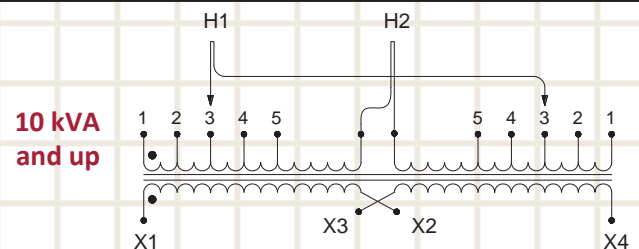
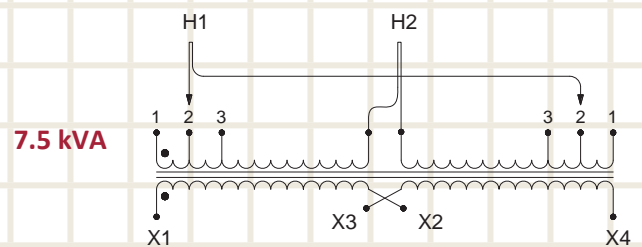
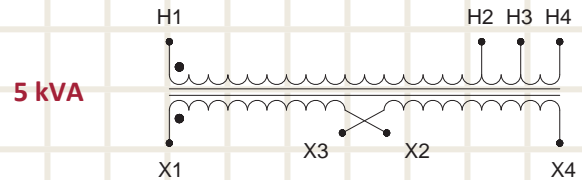
## FEATURES

- General purpose ventilated steel enclosure suitable for indoor, dry locations. After fabrication, all metal is finished in ASA 61 grey power coating suitable for most industrial and commercial installations.
- Transformers up to 75 KVA capacity may be readily hung on H-columns, walls, shelves or floor mounted to suit each installation. Most units have lifting lugs, conduit Knock-Outs (Kos) and a removable front cover for convenient access to terminals.
- Transformers rated above 75 KVA are suitable for floor or platform mounting and complete with integral lifting lugs and removable front panels for convenient access to terminals.
- Transformers terminations rated below 330 Amps are supplied with suitable hardware and lugs for cable connection. Terminations above 330 Amps are supplied with terminal pads only.

SC - Copper windings or  
SA - Aluminum windings  
See Catalogue Numbering System on page 1

- Primary windings have full capacity taps for supply voltage compensations and split secondaries for flexibility.
- Class 220 insulation used throughout.
- **CSA certified, File No. LR 34493**
- **UL listed, File No. E108255**

## TYPICAL CONFIGURATIONS



VOLTAGE	600 - 120/240	480 - 120/240			
kVA	Cat. No.	Cat. No	Taps	Encl. Size *	WT. (lb.)
5	SC5J-K	SC5H-K	±1x5%	2	80
7.5	SC7J-K	SC7H-K	±1x5%	4	120
10	SC10J-K	SC10H-K	±2x2.5%	4	140
15	SC15J-K/Z	SC15H-K/Z	±2x2.5%	4	160
25	SC25J-K/Z	SC25H-K/Z	±2x2.5%	6	220
37.5	SC37.5J-K/Z	SC37.5H-K/Z	±2x2.5%	6	325
50	SC50J-K/Z	SC50H-K/Z	±2x2.5%	6	370
75	SC75J-K/Z	SC75H-K/Z	±2x2.5%	7	540
100	SC100J-K/Z	SC100H-K/Z	±2x2.5%	8	720
150	SC150J-K/Z	SC150H-K/Z	±2x2.5%	9	1050
167	SC167J-K/Z	SC167H-K/Z	±2x2.5%	9	1180
250	SC250J-K/Z	SC250H-K/Z	±2x2.5%	9	1370

\* For enclosure dimensions refer to table on following page.



**REX POWER MAGNETICS**

A DIVISION OF TRANSFACTOR INDUSTRIES INC.  
 65 BASALTIC RD, CONCORD, ON, CA L4K 1G4  
 TEL: 905-695-8844 • FAX: 905-695-8855  
 WWW.REXPOWERMAGNETICS.COM

## TRANSFORMER SPECIFICATION

- 1 Phase Isolation
- Dry Type
- ANN Self Cooled

Purchaser: TBA  
 PO#: TBA  
 SWO#: TBA  
 Qty: TBA

Coils: Copper  
 Cat. No.: SC10J-K

kVA: 10  
 Primary: 600 Volts  
 Secondary: 120/240 Volts

Primary Taps: 2.5 %  
 -Taps FCAN 2  
 -Taps FCBN 2

Frequency: 60 Hz

Sound Level: 45 dB max.  
 BIL: 10 kV  
 Insulation Class: 200° C  
 Temperature Rise: 130° C  
 Impedance: 6.0 - 7.0 %

Weight: 125 Lbs

Termination	Location	Lug Size
Primary:	Front	2-14 AWG
Secondary:	Front	2-14 AWG

### Wiring Connection:

Primary:	H1 , H2	Voltage	% Tap	Jumpers To:
630	105.0	1 - 1		
615	102.5	2 - 2		
600	100.0	3 - 3		
585	97.5	4 - 4		
570	95.0	5 - 5		

Secondary:	X1-X2-X3-X4	Voltage	Interconnect:	Connect Loads To:
240	X2 to X3	120	X1 to X3 and X2 to X4	X1 - X4
120/240	X2 to X3			X1 - X2 - X4 ( X2 is a Neutral )

## Preliminary Drawing ONLY

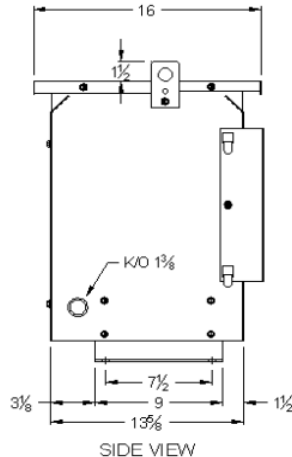
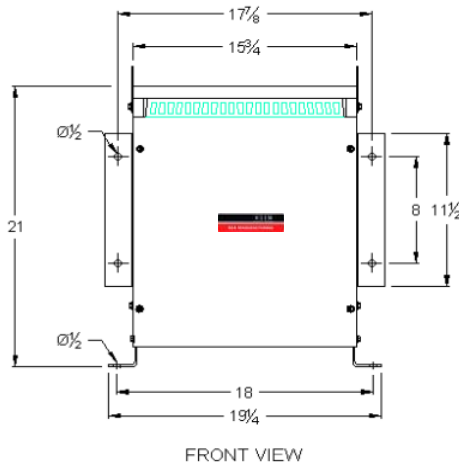
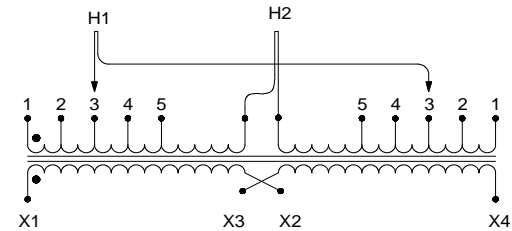
This drawing may NOT truly reflect our final design.  
 Any resulting order(s) must be accompanied by or refer to this drawing and be marked with any proposed changes

### Standards:

1. CSA Certified  
 - File No. LR34493
2. UL Listed  
 - File No. E108255

### Standard Features:

1. Anti-vibration pads installed between the enclosure base and the core & coil assembly
2. Lug for Earth Grounding provided



### CSA Enclosure:

1. Type 3R (NEMA 3R)  
 - Sprinklerproof when the angle between sprinkler heads and opening in the enclosure does not exceed 45 degree from the vertical.
2. Ventilated
3. ASA 61 grey
4. Floor/Wall mounting

Rev.	Remarks	By	Appr. By	Date

Prepared by: AP  
 Approved by: VS  
 Date: AUG.2, 2013