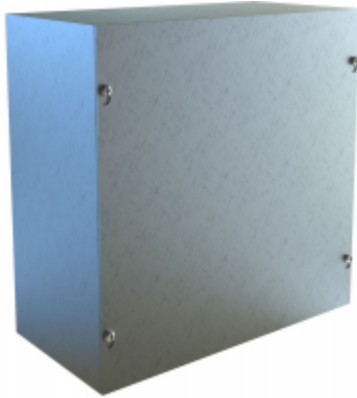




Quality Products. Service Excellence.

Type 1 Unpainted Galvanized Steel Junction Box *CSG Series*

Screw Cover and without Knockouts



Application

- Designed for general purpose indoor commercial use as a junction, pull or switch box.

Standards

- UL-50 Type 1
- CSA Type 1
- Complies with
 - NEMA Type 1
 - IEC 60529, IP20

Construction

- Formed and spot welded from 16 or 14 gauge G90 galvanized steel depending on size.
- Flat steel covers fastened with plated steel screws.
- Keyhole slots permit cover to be lifted off without removing screws entirely.
- Through holes in back for wall mounting.
- Grounding location embossed in body.

Finish

- Enclosure and cover are unpainted galvanized steel.



New and improved PDF part drawing files with more detail now available.

Click part number in table below to access PDF, DXF, and STEP files.

Part No.	H	Enclosure	
		W	D
CSG664	6.00	6.00	4.00
CSG884	8.00	8.00	4.00
CSG10104	10.00	10.00	4.00
CSG12124	12.00	12.00	4.00
CSG18184	18.00	18.00	4.00
CSG24244	24.00	24.00	4.00
CSG666	6.00	6.00	6.00
CSG886	8.00	8.00	6.00
CSG10106	10.00	10.00	6.00
CSG12106	12.00	10.00	6.00
CSG12126	12.00	12.00	6.00
CSG16166	16.00	16.00	6.00
CSG18126	18.00	12.00	6.00
CSG18186	18.00	18.00	6.00

Part No.	Enclosure		
	H	W	D
CSG24246	24.00	24.00	6.00
CSG30306	30.00	30.00	6.00
CSG36366	36.00	36.00	6.00
CSG12128	12.00	12.00	8.00
CSG18188	18.00	18.00	8.00
CSG24248	24.00	24.00	8.00
CSG30308	30.00	30.00	8.00
CSG36368	36.00	36.00	8.00
CSG181812	18.00	18.00	12.00
CSG242412	24.00	24.00	12.00
CSG303012	30.00	30.00	12.00
CSG363612	36.00	36.00	12.00
CSG484812	48.00	48.00	12.00
CSG363616	36.00	36.00	16.00
CSG484816	48.00	48.00	16.00

Data subject to change without notice

© 2019. Hammond Manufacturing Ltd. All rights reserved.