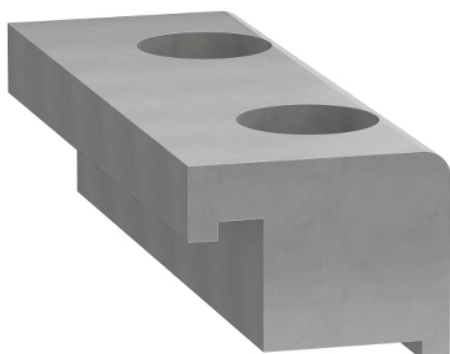


Product data sheet

Characteristics

VW33MF10814

clamping claws, PAS44, TAS42/43, nut 8 - 10 pieces



Main

Range of product	Lexium linear motion
Product or component type	Clamping jaw
Product specific application	To mount portal axis on fixed support
Accessory / separate part category	Maintenance accessories

Complementary

Product compatibility	PAS 44 linear axis 110 x 110 mm TAS 42 linear axis 150 x 54 mm TAS 43 linear axis 200 x 59 mm
Range compatibility	Lexium PAS Lexium TAS

Ordering and shipping details

Category	18233-LINEAR MOTION ACCESSORIES
Discount Schedule	PC57
GTIN	3606485229003
Returnability	No
Country of origin	DE

Packing Units

Unit Type of Package 1	PCE
Number of Units in Package 1	1
Package 1 Height	2.56 in (6.5 cm)
Package 1 Width	5.04 in (12.8 cm)
Package 1 Length	7.72 in (19.6 cm)
Package 1 Weight	31.23 oz (885.333 g)
Unit Type of Package 2	S04
Number of Units in Package 2	12
Package 2 Height	11.81 in (30.0 cm)
Package 2 Width	15.75 in (40.0 cm)
Package 2 Length	23.62 in (60.0 cm)
Package 2 Weight	25.94 lb(US) (11.764 kg)

The information provided in this documentation contains general descriptions and/or technical characteristics of the performance of the products contained herein. This documentation is not intended as a substitute for and is not to be used for determining suitability or reliability of these products for specific user applications. It is the duty of any such user or integrator to perform the appropriate and complete risk analysis, evaluation and testing of the products with respect to the relevant specific application or use thereof. Neither Schneider Electric Industries SAS nor any of its affiliates or subsidiaries shall be responsible or liable for misuse of the information contained herein.

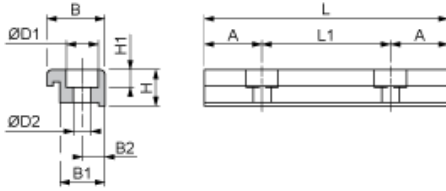
Offer Sustainability

California proposition 65	WARNING: This product can expose you to chemicals including: Lead and lead compounds, which is known to the State of California to cause cancer and birth defects or other reproductive harm. For more information go to www.P65Warnings.ca.gov
REACH Regulation	REACH Declaration
REACH free of SVHC	Yes
EU RoHS Directive	Pro-active compliance (Product out of EU RoHS legal scope) EU RoHS Declaration
Toxic heavy metal free	Yes
Mercury free	Yes
China RoHS Regulation	China RoHS Declaration
RoHS exemption information	Yes
PVC free	Yes

Contractual warranty

Warranty	18 months
----------	-----------

Dimensions



Dimensions in mm

A	B	B1	B2	H	H1	L	L1	ØD1	ØD2
18	28	20	10	22	12	76	40	15	9

Dimensions in in.

A	B	B1	B2	H	H1	L	L1	ØD1	ØD2
0.71	1.10	0.79	0.39	0.87	0.47	2.99	1.57	0.59	0.35