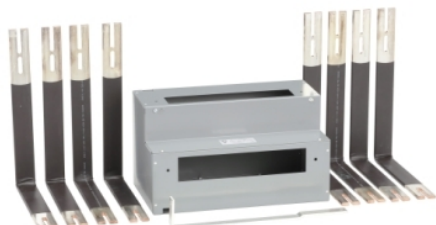


Product data sheet

Characteristics

MCIE12004L

Meter accessory, Square D Meter Centres, inside elbow sections, 240V, 1 and 3 phase, 800A to 1200A main bus rating



Main

Range of Product	Square D
Product or Component Type	Inside elbow

Complementary

Bus rated current	800...1200 A
Height	17.99 in (457 mm)
Width	10.00 in (254 mm)
Depth	6.38 in (162 mm)
Phase	1 phase 3 phase

Environment

Product Certifications	CSA
------------------------	-----

Ordering and shipping details

Category	00199-DE5 MISC. SERVICE PARTS
Discount Schedule	DE5
GTIN	785901115113
Returnability	Yes
Country of origin	MX

Packing Units

Unit Type of Package 1	PCE
Number of Units in Package 1	1
Package 1 Height	13.00 in (33.02 cm)
Package 1 Width	17.00 in (43.18 cm)
Package 1 Length	19.50 in (49.53 cm)
Package 1 Weight	61.00 lb(US) (27.669 kg)

Offer Sustainability

REACH Regulation	REACH Declaration
EU RoHS Directive	Compliant with Exemptions
Mercury free	Yes
China RoHS Regulation	China RoHS Declaration
RoHS exemption information	Yes